



BradCommunications™ SST™ PROFIBUS network interfaces provide high-performance control and the support required for your PROFIBUS applications.

24 Feb. 10  
DW200578

## SST™ PROFIBUS Interfaces

For Controlling and Monitoring PROFIBUS Applications

### Features

- PCI/PCIe bus formats available with one and two channels
- Simultaneous execution of PROFIBUS DP Master, DP Slave and FDL (layer 2)
- Master Class 1 and Class 2 DPV1 support through Windows API
- Supports all standard baud rates: 9.6 Kbaud to 12 Mbaud
- Flash memory for storage of configuration
- Supports device configuration and diagnostics through FDT using commDTM
- Supports all PROFIBUS baud rates including 45.45 kbps
- Diagnostic LEDs for system status, watchdog timeout, and communications status

### OS and Drivers Supported

- Windows NT4 / 2000 / XP drivers
- DP configuration software with enhanced diagnostics
- OPC Server v3.0
- Open, documented memory map interface with example C source code and Windows 32-bit DLLs for custom driver development

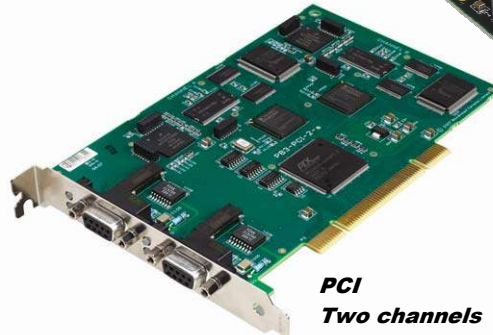
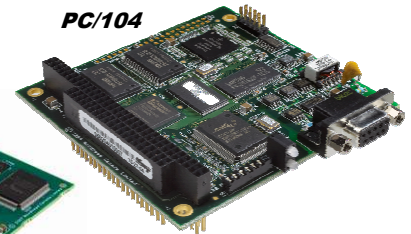
### Related Products



BradConnectivity™  
Diagnostic  
D-Sub Connector



PC/104



PCI  
Two channels



BradCommunications™ network interface cards are ideal for applications where high-performance control and reliability are required. Backed by superior support and service, BradCommunications network interfaces support a wide range of network protocols and bus formats.

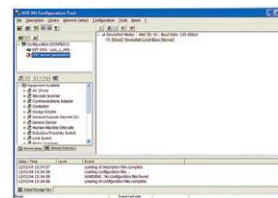
### Overview

BradCommunications SST™ network interface cards for PROFIBUS can be found in many applications including:

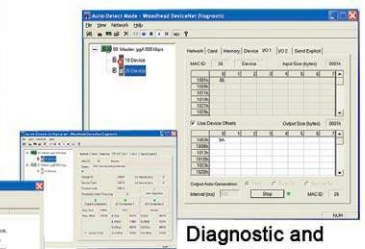
- Operator interface
- Human-machine interface
- PC control
- Device development
- Network diagnostics

### Software Tools

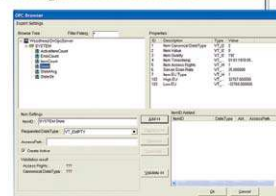
Software tools available for BradCommunications SST PROFIBUS network interface cards enable fast integration of industrial communications into your application.



Configuration Console



Diagnostic and  
Test Tools



OPC Browser

# SST™ PROFIBUS Interfaces



## Network Specifications

<b>Protocol</b>	<ul style="list-style-type: none"> <li>PROFIBUS Master DP-V0, Class 1 and Class 2</li> <li>PROFIBUS Slave DP-V0</li> <li>PROFIBUS Master DP-V1, Class 1 and Class 2</li> <li>FDL Layer 2</li> </ul>
<b>Data Rate</b>	<ul style="list-style-type: none"> <li>All PROFIBUS data rates up to 12Mbps</li> </ul>
<b>Cable</b>	<ul style="list-style-type: none"> <li>Belden 3079A</li> <li>Brad Harrison® 85-0001 PVR2 conductor with shield, UL-listed</li> </ul>
<b>Connector</b>	<ul style="list-style-type: none"> <li>DB9 female connector per port/channel</li> <li>Brad Harrison Diagnostic D-Sub connector part number: MA9D01-42</li> </ul>
<b>Isolation</b>	<ul style="list-style-type: none"> <li>1000 V</li> </ul>

## Hardware Specifications

	PCI / PCI Express	ISA	PC/104
<b>Bus Interface</b>	PCI: Compliant with PCI 2.2 PCI Express: PCI Express 1x, rev 1.0a	Compliant with EISA Specification Version 3.12	Compliant with PC/104 Specification Version 2.3
<b>Processor</b>	ColdFIRE 5272		
<b>Memory</b>	One channel: 256K Window Two channel: 512K Window	Min. 8K Window in host memory map (max. 256K and default 16K)	Min. 8K Window in host memory map (max. 256K and default 16K)
<b>Diagnostics</b>	LEDs for system status and communications status		
<b>Interrupts</b>	Hardware Plug & Play (32 Kbytes used per card)	Software selectable level IRQ 0 through 7	
<b>Dimensions (Length x Width)</b>	6.875 in x 4.2 in (17.463 cm x 10.668 cm)	6.225 in x 4.2 in (15.812 cm x 10.668 cm)	9.588 cm x 9.017 cm (3.775 in x 3.550 in)
<b>Typical Current Draw</b>	600 mA		
<b>Voltage Requirements</b>	5V and 3.3V	5V	
<b>Resources</b>	PCI Region 0=128 bytes PCI memory PCI Region 2=256K of 32-bit PCI memory (one channel) and 512K of 32-bit PCI memory (two channels) PCI Region 3=32 bytes of 32-bit PCI memory One PCI interrupt	ISA Memory Region = 256K of 16-bit ISA memory ISA I/O Region = 8 bytes of ISA I/O memory One ISA interrupt	PC/104 Memory Region = 256K of 16-bit PC/104 memory PC/104 I/O Region = 8 bytes of PC/104 I/O memory One PC/104 interrupt
<b>Operating Temperature</b>	0°C (32°F) up to +60°C (140°F)		
<b>Storage Temperature</b>	-40°C (-40F) up to +85°C (185F)		
<b>Humidity</b>	5% to 95% non-condensing		
<b>RoHS compliant</b>	Yes	Yes	No

## Ordering Information

Part Number	SAP	Product Description	Other Related Products
SST-PB3-PCU (E)	1120110021	PROFIBUS card, Universal 3.3V/5V PCI bus (PCI-X compatible), one channel	IP67 and IP20 I/O Gateways Cable Assemblies Diagnostic Tools Network Interfaces
SST-PB3-PCIE-1	1120110031	PROFIBUS card, PCI Express 1x, PCI-X compatible, one channel	
SST-PB3-PCU-2	1120110022	PROFIBUS card, Universal 3.3V/5V PCI bus (PCI-X compatible), two channels	
SST-PB3-PCIE-2	1120110029	PROFIBUS card, PCI Express 1x, two channels	
SST-PB3-104(E)	1120130013	PROFIBUS card, PC/104 bus, one channel	
SST-PB3-ISA (E)	1120120005	PROFIBUS card, ISA bus, one channel	
SST-PB3-CNF-P	1120300008	Configuration Console Application, parallel key	
SST-PB3-CNF-U	1120300009	Configuration Console Application, USB key	
SST-PB3-OPC	1120280030	OPC Server	

To contact us: [www.woodhead.com](http://www.woodhead.com)

**Brad**<sup>®</sup>  
from **molex**

**North America:** US: + 1 800 225 7724 – Canada: +1 519 725 5136  
**Europe:** France: +33 2 32 96 04 20 – Germany: +49 7252 94 96 0 – Italy: +39 010 59 30 77 –  
 United: Kingdom +44 1495 356300  
**Asia:** Shanghai, China: +86 21-5835-9885 - Tianjin, China: +86 22-23321717  
 Singapore: +65 6268-6868 – Yamato, Japan: +81 46-265-2428 – Nagoya, Japan: +81 52-221-5950

BradCommunications, BradConnectivity and SST are trademarks of Woodhead Industries. © 2008 Molex Incorporated.