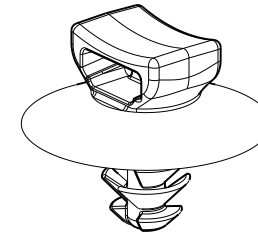
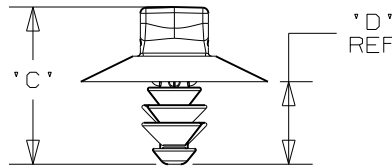
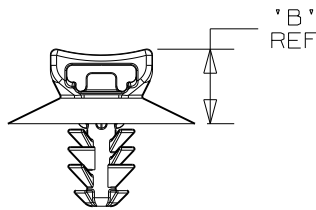
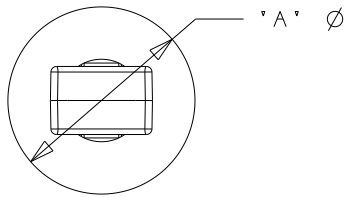


PANDUIT PART NUMBER	USED WITH CABLE TIES	DIMENSIONS				WEIGHT grams/100pcs
		'A'	'B' (REF)	'C'	'D' (REF)	
PUM-049- <u> </u>	M, I, S	16.5	6.6	13.8	7.2	33 g



SCALE 2:1

NOTES:

1. SEE WWW.PANDUIT.COM FOR PART NUMBER SUFFIX DESIGNATION FOR PACKAGE SIZE, MATERIAL AND COLOR.
2. (*) DIMENSIONAL VARIANCE IS POSSIBLE DUE TO MOLDING PROCESS RELATED SINK MARKS.
3. APPLICATION SPECIFICATION:
 HOLE DIAMETER: 4.6 - 4.9 mm
 PANEL THICKNESS: 0.7 - 3.0 mm

CAD FILENAME/LAYERS 10B015CV/01_DC_GB0239ML_REV06



TINLEY PARK, ILLINOIS

PUM-049
PUSH UMBRELLA MOUNT 049

UNLESS OTHERWISE SPECIFIED, ALL DIMENSIONS ARE METRIC TOLERANCE: ±0.5MM

DRAWN BY TMSA

MAT'L:

SCALE 1:1 UNLESS NOTED

DATE 8-11-06

NYLON 6/6

DRAWING NO. GB0239ML

DWG

CHK'D

SIZE

A

REV	DATE	BY	CHK	DESCRIPTION	ECN	R	CUST	SUP
6	3/08/11	BWG	MPH	CHANGED MATERIAL NOTE. REMOVED MATERIAL BOX FROM CHART.	GB0239ML	6	PBC	