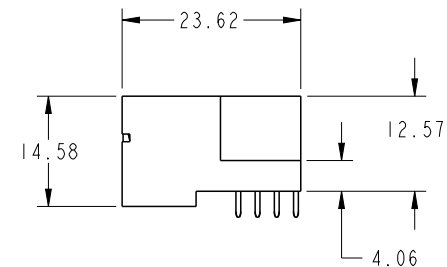
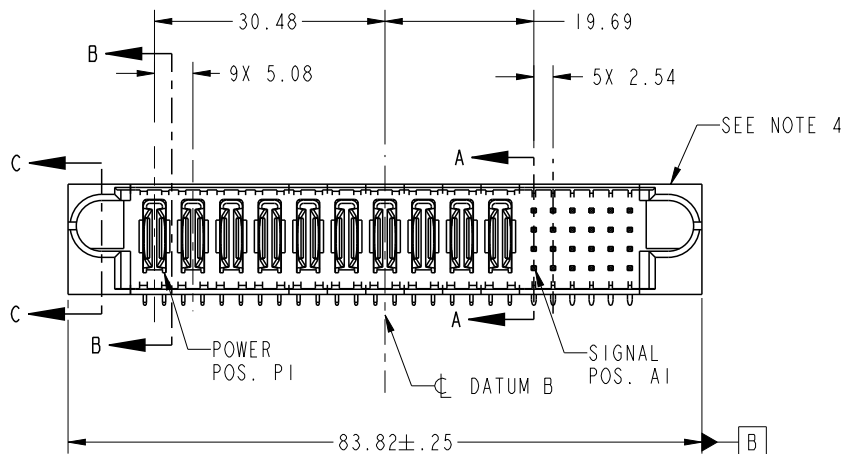


PRODUCT NO.	ROWS	POWER										SIGNAL							
		E1	P1	P2	P3	P4	P5	P6	P7	P8	P9	P10	1	2	3	4	5	6	E2
51939-660_- NOTE: 3	DCBA																		

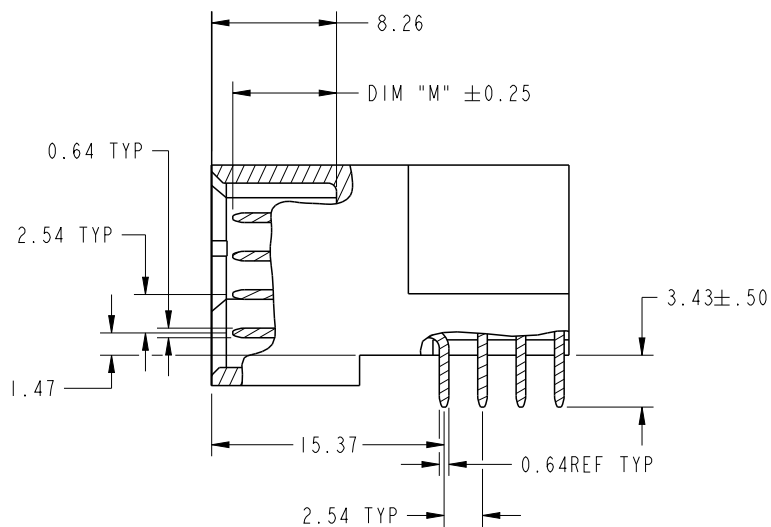


CODE	DIM "M" MATING LENGTH	CONTACT TYPE
U	[6.86]	SIGNAL
T	[6.86]	SIGNAL
S	[6.86]	SIGNAL
R	[6.86]	SIGNAL
PA	[N/A]	POWER

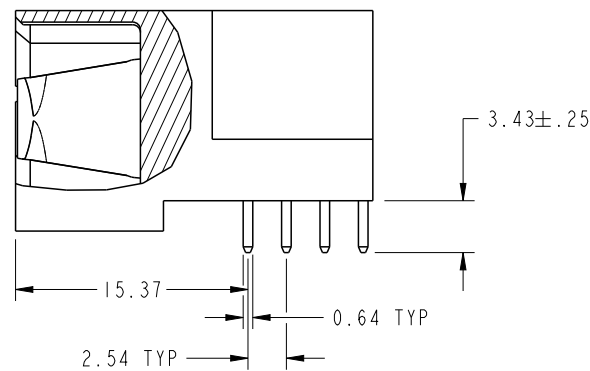
spec ref	*	dr	Guang, Shi	2012/04/01	projection	MM	size	A4	scale	1:1	
tolerance std	TOLERANCES UNLESS OTHERWISE SPECIFIED	eng	X Q Wang	2012/08/08			ecn no	-			
		chr	-	-				rel level	Released		
surface	linear	0.X	±0.50		title	product family	PwrBlade			rev	
		0.XX	±0.25				cat. no.	Product - Customer Drw	sheet 1 of 4		
		0.XXX	±0.10								
angular	0°	±2°	www.fci.com	10P + 24S	RIGHT ANGLE SOLDER HEADER	dwg no	51939-660		A		

PRODUCT NUMBER

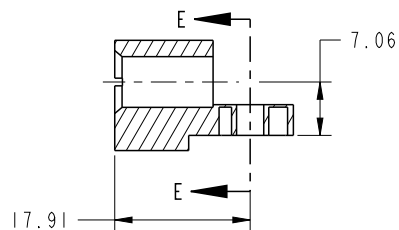
51939-660__
NOTE: 3



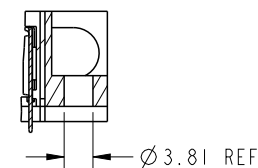
BROKEN-OUT SECTION A-A
SCALE 2:1



BROKEN-OUT SECTION B-B
SCALE 2:1



SECTION C-C

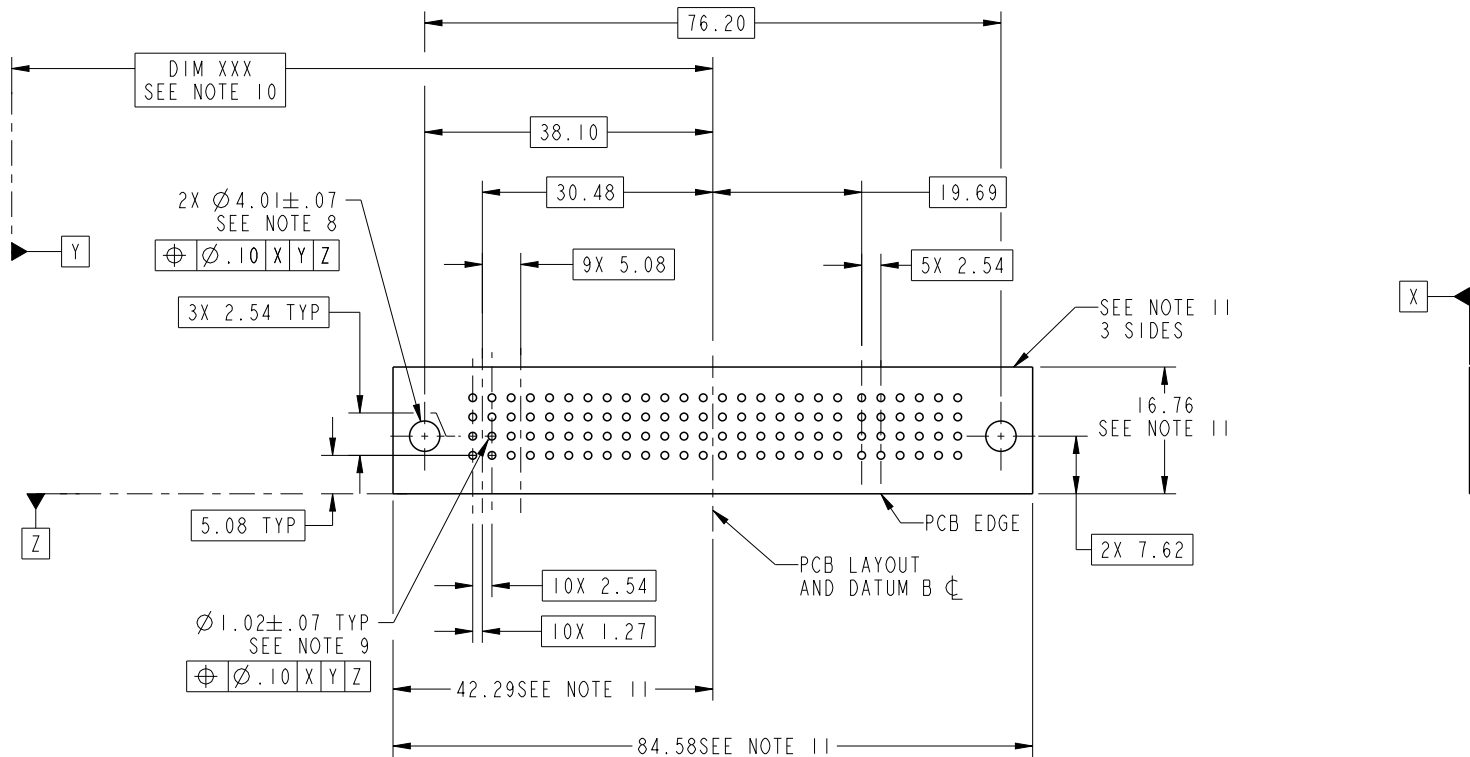


PARTIAL SECTION E-E

dr	Guang, Shi	2012/04/01	projection 	MM 	size	A4	scale	1:1
eng	X Q Wang	2012/08/08			ecn no	-		
chr	-	-			rel level	Released		
appr	Pei-Ming Zheng	2012/08/10	product family	PwrBlade	rev	A		
	title	10P + 24S RIGHT ANGLE SOLDER HEADER		dwg no	51939-660	sheet 2 of 4		
www.fci.com	cat. no.	Product - Customer Drw						

PRODUCT NUMBER

51939-660__
NOTE: 3



RECOMMENDED PCB LAYOUT

dr	Guang, Shi	2012/04/01	projection 	MM 	size	A4	scale	1:1
eng	X Q Wang	2012/08/08			ecn no	-		
chr	-	-			rel level	Released		
appr	Pei-Ming Zheng	2012/08/10	product family	PwrBlade	rev	A		
	title	10P + 24S RIGHT ANGLE SOLDER HEADER		dwg no	51939-660	sheet 3 of 4		
www.fci.com	cat. no.	Product - Customer Drw			sheet 3 of 4			

PRODUCT NUMBER

51939-660__
NOTE: 3

NOTES:

1. DIMENSIONS AND TOLERANCES ARE IN ACCORDANCE WITH ASME Y14.5M, 1994 UNLESS OTHERWISE SPECIFIED.

CONNECTOR NOTES:

- 2. HOUSING MATERIAL: UL 94 V-0 GLASS FILLED HIGH-TEMP THERMOPLASTIC
POWER CONTACT MATERIAL: COPPER ALLOY
SIGNAL PIN MATERIAL: COPPER ALLOY
 - 3. PLATING:
SEE ITEM 1 & 2 IN PRINT 10064183 FOR PLATING SPEC OF 51939-660; 51939-660LF PRESPECTIVELY
 - 4. MANUFACTURER'S NAME, P/N, AND DATE CODE TO APPEAR ON THIS SURFACE.
 - 5. PRODUCT SPECIFICATION GS-12-149.
APPLICATION SPECIFICATION BUS-20-067.
 - 6. PACKAGED IN TRAYS.
- PCB NOTES:
- 7. ALL HOLE DIAMETERS ARE FINISHED HOLE SIZE.
 - 8. MOUNTING HOLES, WHERE APPLICABLE, ARE UNPLATED.
 - 9. $\varnothing 1.151 \pm 0.025$ DRILLED HOLES PLATED WITH)
0.008 MIN SnPb OR Sn OVER 0.03
TO 0.08 Cu PLATING TO ACHIEVE
 $\varnothing 1.02 \pm .07$ HOLE.
 - 10. "DIM XXX" TO BE DETERMINED BY THE CUSTOMER.
 - 11. CONNECTOR KEEP-OUT ZONE.

dr	Guang, Shi	2012/04/01	projection 	MM 	size	A4	scale	1:1
eng	X Q Wang	2012/08/08			ecn no	-		
chr	-	-			rel level	Released		
appr	Pei-Ming Zheng	2012/08/10	product family	PwrBlade	rev	A		
	title	10P + 24S RIGHT ANGLE SOLDER HEADER		dwg no	51939-660			
www.fci.com	cat. no.	Product - Customer Drw			sheet 4 of 4			



Copyright FCI.