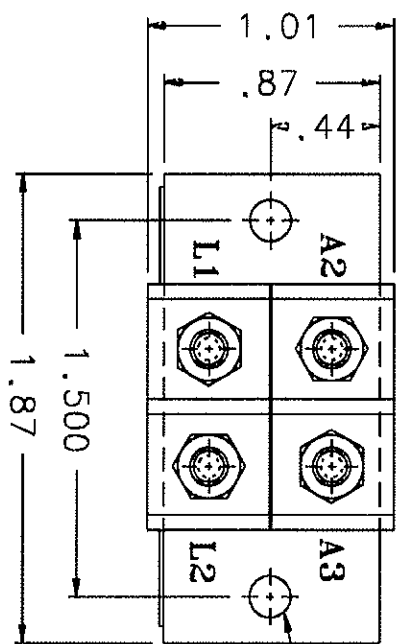
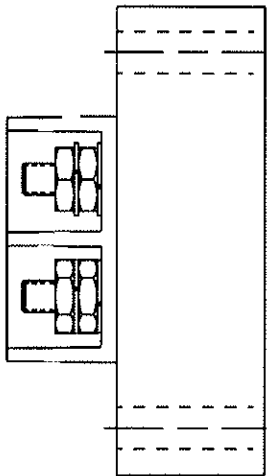
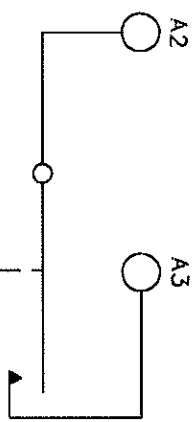


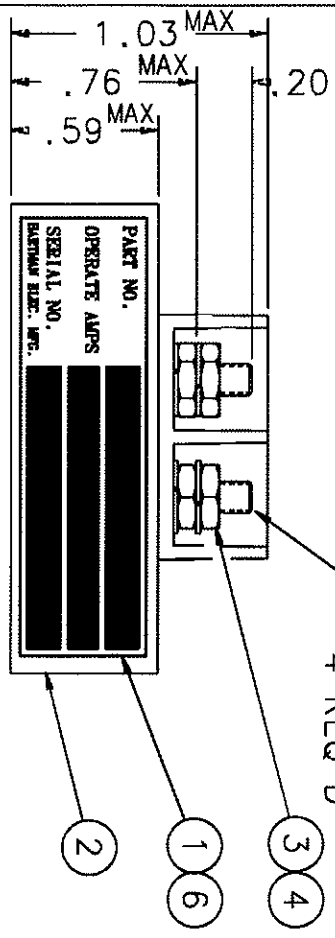
REVISIONS		RELEASED	
REV.	DESCRIPTION	DATE	APPROVED
C	REMOVED NOT RELEASED FOR PRODUCTION	99/03/17	RS
D	40463 *MAX* ADDED TO .59	99/09/27	RS
E	41497 *MAX* ADDED TO .76 & 1.03	00/02/01	RS
F	0633 CHANGED ALTITUDE TO 60,000 ADDED TYCO P/N	02/07/25	RS
G	0134-03 CHANGED ITEM 2 FROM -010 TO -030	03/12/16	CS



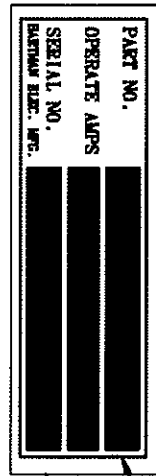
2 : 166 DIA. HOLE
MTG HOLES



OPERATING CHARACTERISTICS
 PICKUP 1.5 AMP MAX.
 DROPOUT LESS THAN 1 AMP
 CONTINUOUS 10 AMPS MAX.
 15 AMP FOR 3 SEC
 1.25 OZ.
 TEMP -55°C TO +71°C
 VIBRATION 10 G's TO 500HZ
 ALTITUDE 60,000 FT. MAX.
 CONTACT RATING 2 AMP RES. 28 VDC
 .08 AMP LAMP LOAD



4 6-32 UNC-2A
REQ'D



QTY	PART OR IDENTIFYING NO	DESCRIPTION	UNIT	REMARKS
6	1	OVERLAY		
4	4	WASHER - LOCK No.6 SPLIT		
3	4	NUT 6-32 X 1/4 X 5/64 HEX.		
2	1	RELAY ASSEMBLY - PRIMARY		
1	1	PLATE - NAME		

UNLESS OTHERWISE SPECIFIED
 DIMENSIONS ARE IN INCHES
 TOLERANCES ARE:
 .06 ± .010 ± .1*

DR BY RCB 03/12/16
 CHK BY CS 03/12/16
 ENGR JSC 09-01-08
 MFG WJ 04-28-14
 SIZE C
 CODE IDENT 74063
 SCALE 1/1 SHEET

TYCO Electronics
 175 N. DUNDON STREET WILMINGTON, OHIO 44092
 RELAY - CURRENT INDICATOR
 Q-50AB-2
 REF TYCO P/N 0-1616131-3