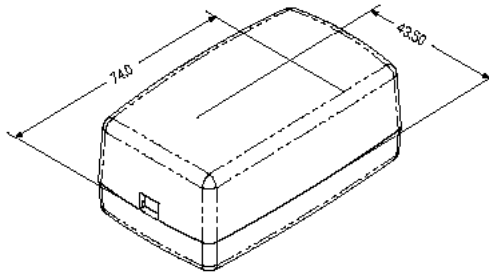
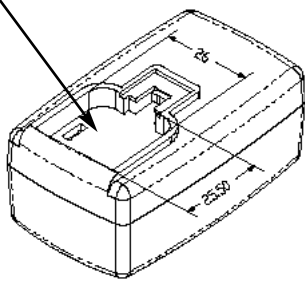


PROPRIETARY INFORMATION:
 PROPRIETARY OF GLOBTEK, INC. ANY REPRODUCTION, DISCLOSURE OR USE OF THIS DRAWING, IN WHOLE OR IN PART, IS HEREBY PROHIBITED EXCEPT AS SPECIFIED IN WRITING BY GLOBTEK, INC.

REVISION			
REV	DESCRIPTION	DATE	APPROVED
A	INITIAL RELEASE, RFS. 20846, JS	05/02/11	HM



STANDARD OPTION SHIPS WITHOUT AC PINS INSTALLED

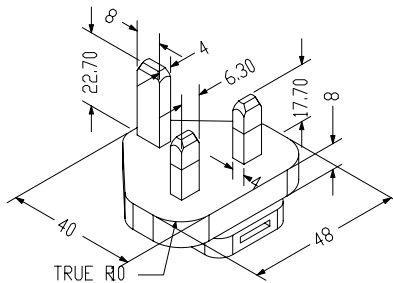


1. MATERIAL

HIGH IMPACT PLASTIC, 94V0 POLYCARBONATE, NON-VENTED, COLOR GLOBTEK WHITE 057

2. INPUT CONNECTOR:

UK BS 1363 CONFIGURATION: UK 2 PINS CLASS II



P/N: Q-UK-WH(R)
 UNITED KINGDOM
 HONG KONG
 SINGAPORE

Foot Note:
 Globtek Inc. will not be liable for the safety and performance of these power supplies if unauthorized access and repair occurs. End user should consult applicable UL, CSA or EN standards for proper installation instructions

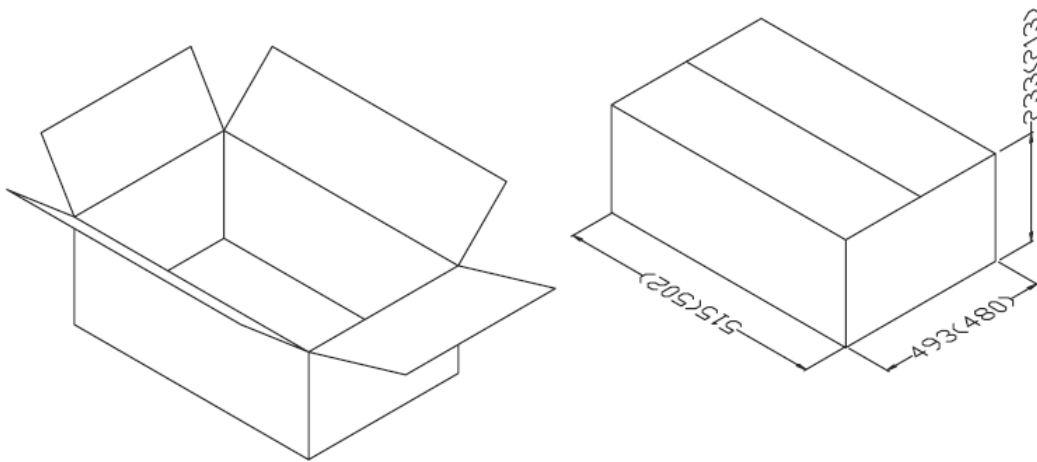
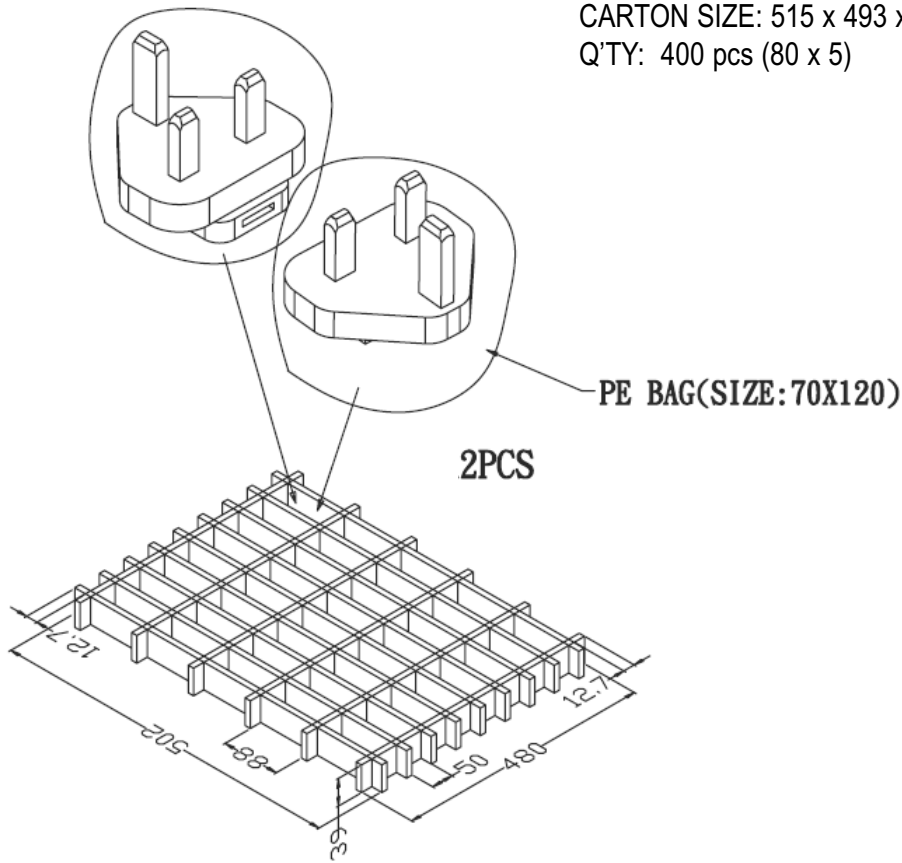
DASH NO.	PART NO	REV.	DESCRIPTION		NOTES
TABULATION BLOCK					
			GlobTek, Inc. www.globtek.com		186 Veterans Dr. Northvale, NJ 07647 Tel. 201-784-1000 Fax 201.784.0111
INIT. BY: JS		DATE: 05/02/11	TOLERANCES: DECIMALS ANGULAR .xx +/- 0.1 +/- 1° .xxx +/- .005		DWG TITLE: UK INTERCHANGEABLE INPUT BLADES
DRAWN: NF		DATE: 05/02/11	MILLIMETERS ANGULAR .xx +/- 0.3 +/- 1° .xxx +/- .013		
APRVD : HM	DATE: 05/02/11	FSCN No.: G, N	SIZE A	MODEL NO: N/A	REV. A
		SCALE: NONE	PART NO: Q-UK-WH(R)		SHEET 1 OF 2


Limitation of Use:
 Globtek product are not authorized for use as mission critical components in life support, hazardous environment, nuclear or aircraft applications without prior written approval from the CEO of Globtek Inc.

PROPRIETARY INFORMATION:
 PROPRIETARY OF GLOBTEK, INC. ANY REPRODUCTION, DISCLOSURE OR
 USE OF THIS DRAWING, IN WHOLE OR IN PART, IS HEREBY
 PROHIBITED EXCEPT AS SPECIFIED IN WRITING BY GLOBTEK, INC.

3. PACKING:

CARTON SIZE: 515 x 493 x 233
 Q'TY: 400 pcs (80 x 5)



 GlobTek, Inc. www.globtek.com		186 Veterans Dr. Northvale, NJ 07647 Tel. 201-784-1000 Fax 201.784.0111	
DWG TITLE: UK INTERCHANGEABLE INPUT BLADES			
MODEL NO: N/A			REV. A
PART NO: Q-UK-WH(R)			SHEET 2 OF 2