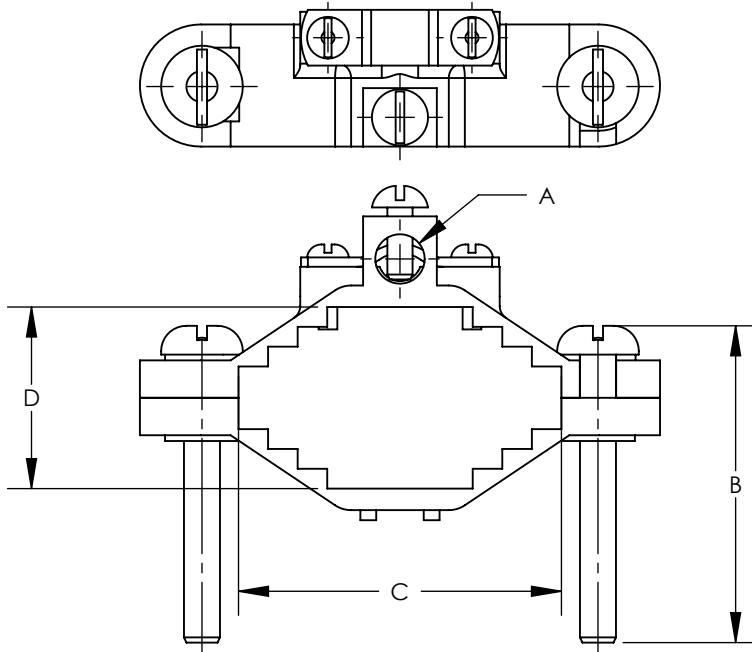


THIS COPY IS PROVIDED ON A RESTRICTED BASIS AND IS NOT TO BE USED IN ANY WAY DETRIMENTAL TO THE INTERESTS OF PANDUIT CORP.

NOTES:

1. MATERIAL:
BODY - BRONZE (GUN METAL)
SCREW - STEEL, ZINC PLATED
2. PARTS ARE cULus LISTED TO UL467 AS
GROUNDING & BONDING EQUIPMENT.
3. SEE WWW.PANDUIT.COM FOR PART NUMBER
SUFFIX DESIGNATION FOR PACKAGE SIZE.



PART NUMBER	DESCRIPTION	WATER PIPE	GROUNDING WIRE	DIMENSIONS IN [mm] +/- .05 [1.3]			
				A	B	C	D
GPCA2-2	GROUND CLAMP FOR ARMORED CABLE	1-1/4" - 2"	8 - 4 STR	.33 [8.4]	2.22 [56.4]	2.22 [56.4]	1.19 [30.2]
GPCA2-4	GROUND CLAMP FOR ARMORED CABLE	2-1/2" - 4"	8 - 4 STR	.33 [8.4]	4.25 [108.0]	3.83 [97.3]	2.70 [68.6]
GPCA2-6	GROUND CLAMP FOR ARMORED CABLE	4-1/2" - 6"	8 - 4 STR	.33 [8.4]	5.20 [132.1]	5.96 [151.4]	4.50 [114.3]

REV	DATE	BY	CHK	APR	DESCRIPTION	ECN
00	7/12	JHNU	SRBI	RGB	DRAWING RELEASED	10J018AH-JC

TITLE
**BRONZE GROUND PIPE CLAMP
CUSTOMER DRAWING**

ITEM REVISION NAME: 10J018AH/00

DATASET FILE NAME: 10J018AH-JC/00.SLDDRW

UNLESS OTHERWISE SPECIFIED,
DIMENSIONAL TOLERANCES ARE: IN [mm]
.X ± .XXX ±
.XX ± ANGLES ±

THIRD ANGLE PROJECTION

MATERIAL: SEE NOTES

DRAWING NUMBER: 10J018AH-JC

SHEET 1 OF 1

SIZE: A

DRAWN BY: JHNU DATE: 7/12 CHK: SRBI SCALE: N/A