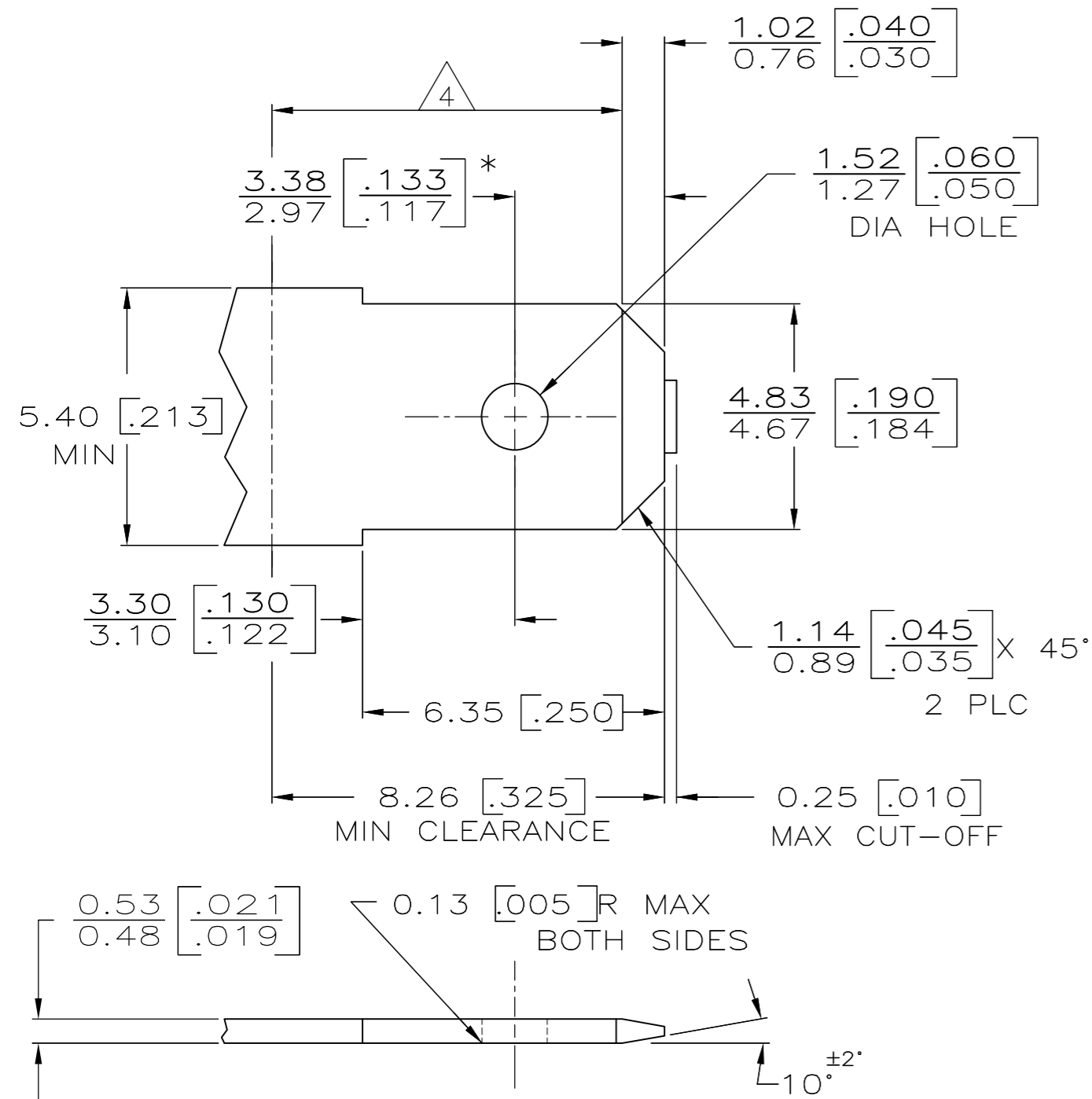


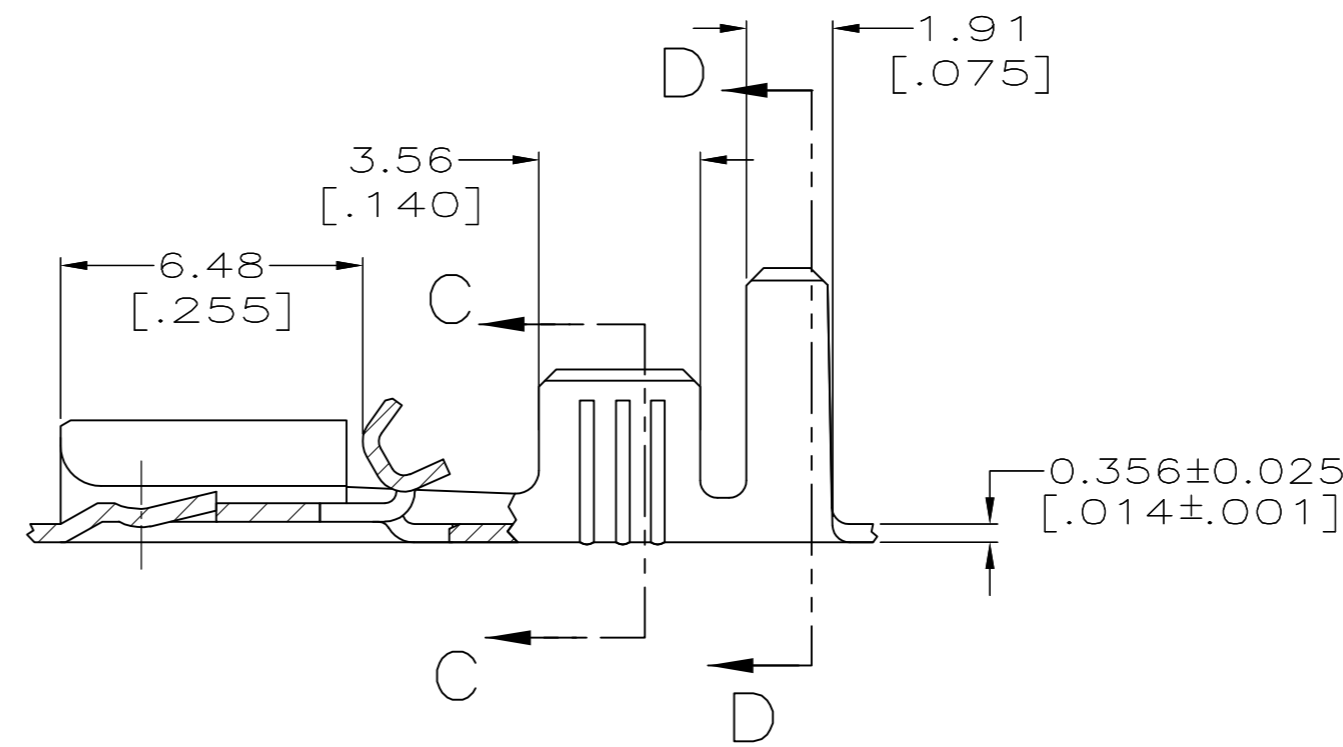
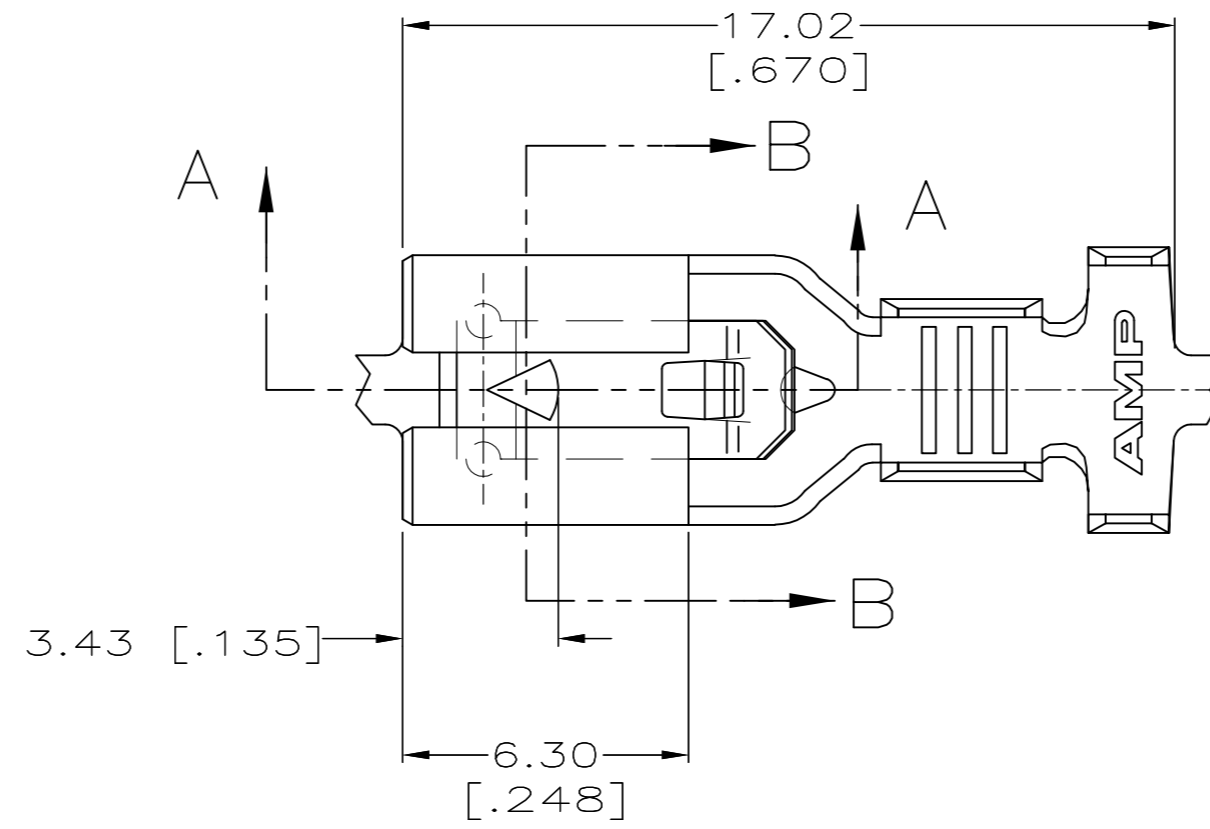
THIS DRAWING IS UNPUBLISHED. RELEASED FOR PUBLICATION
 © COPYRIGHT - By - ALL RIGHTS RESERVED.

LOC		DIST		REVISIONS			
P	LTR	DESCRIPTION		DATE	DWN	APVD	
AF	50	D		REVISED PER ECR-13-011489	14DEC2013	KH	PD

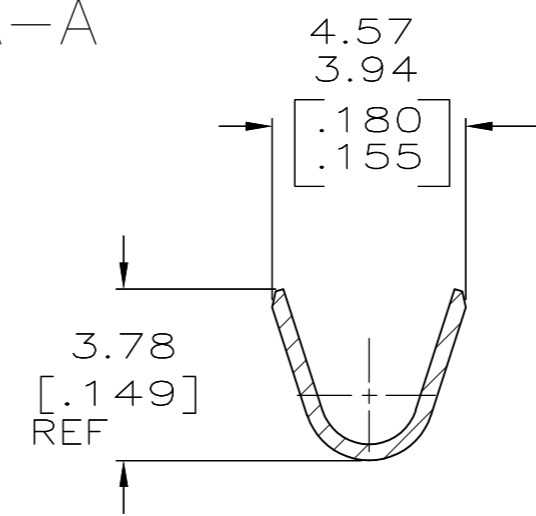
SUGGESTED MATING TAB



- MATL: #2 HARD BRASS OR NICKEL PLATE STEEL.
 - NO BURRS PERMISSIBLE AT HOLE.
 - TIN PLATING IS REQUIRED ON BRASS WHEN TERMINAL TEMPERATURE IS OVER 225° F.
 - MUST BE FLAT WITHIN 0.076[.003] OVER THIS LENGTH.
 - HOLE MUST BE SYMMETRICAL ABOUT TAB & WITHIN 0.076[.003].
- * TO BE USED ONLY WHEN SHOULDER IS ELIMINATED.

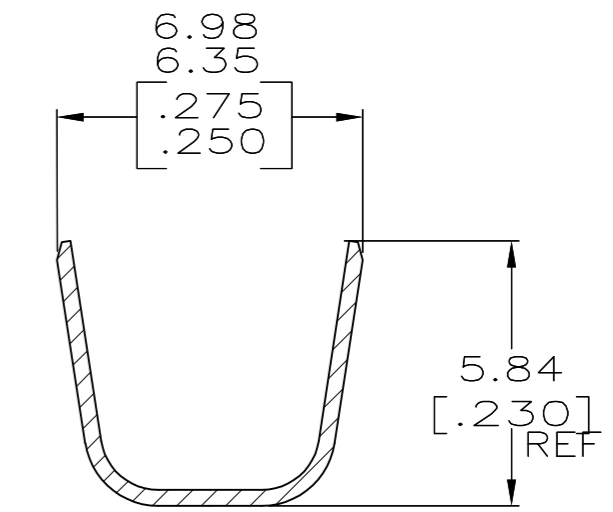


SECTION A-A



SECTION C-C

SECTION B-B ROTATED 90° CW



SECTION D-D

- CONTINUOUS STRIP ON REELS.
- ACCEPTS [#18-#14] SINGLE WIRE SIZES AND COMBINATION OF TWO [#18'S]. WIRE CRIMP IS 3.05 [.120], F TYPE.
- FITS INSULATION RANGE OF 3.81-5.08 [.150-.200] DIA OR TWO WIRES AT 2.79 [.110] MAX DIA. INSULATION CRIMP IS 5.59 [.220], F TYPE.

0.002032 [.000080] MIN TIN	1217114-2
-	1217114-1
FINISH	PART NO.

THIS DRAWING IS A CONTROLLED DOCUMENT.		DWN	JR RUTH	9/17/98		TE Connectivity		
DIMENSIONS: mm [INCHES]		CHK	MS FEHER	9/17/98		RECEPTACLE, POSITIVE-LOCK, MARK III, 4.75 [.187] SERIES		
TOLERANCES UNLESS OTHERWISE SPECIFIED:		APVD	E HOWARD	9/17/98		SIZE	CAGE CODE	DRAWING NO
0 PLC ± -		PRODUCT SPEC				A2	00779	C=1217114
1 PLC ± -		APPLICATION SPEC			SCALE	SHEET	REV	
2 PLC ± 0.25 [.010]		WEIGHT			6:1	1 of 1	D	
3 PLC ± -		CUSTOMER DRAWING						
4 PLC ± -								
ANGLES ± -								
FINISH SEE TABLE								