

MATERIAL AND FINISHES:

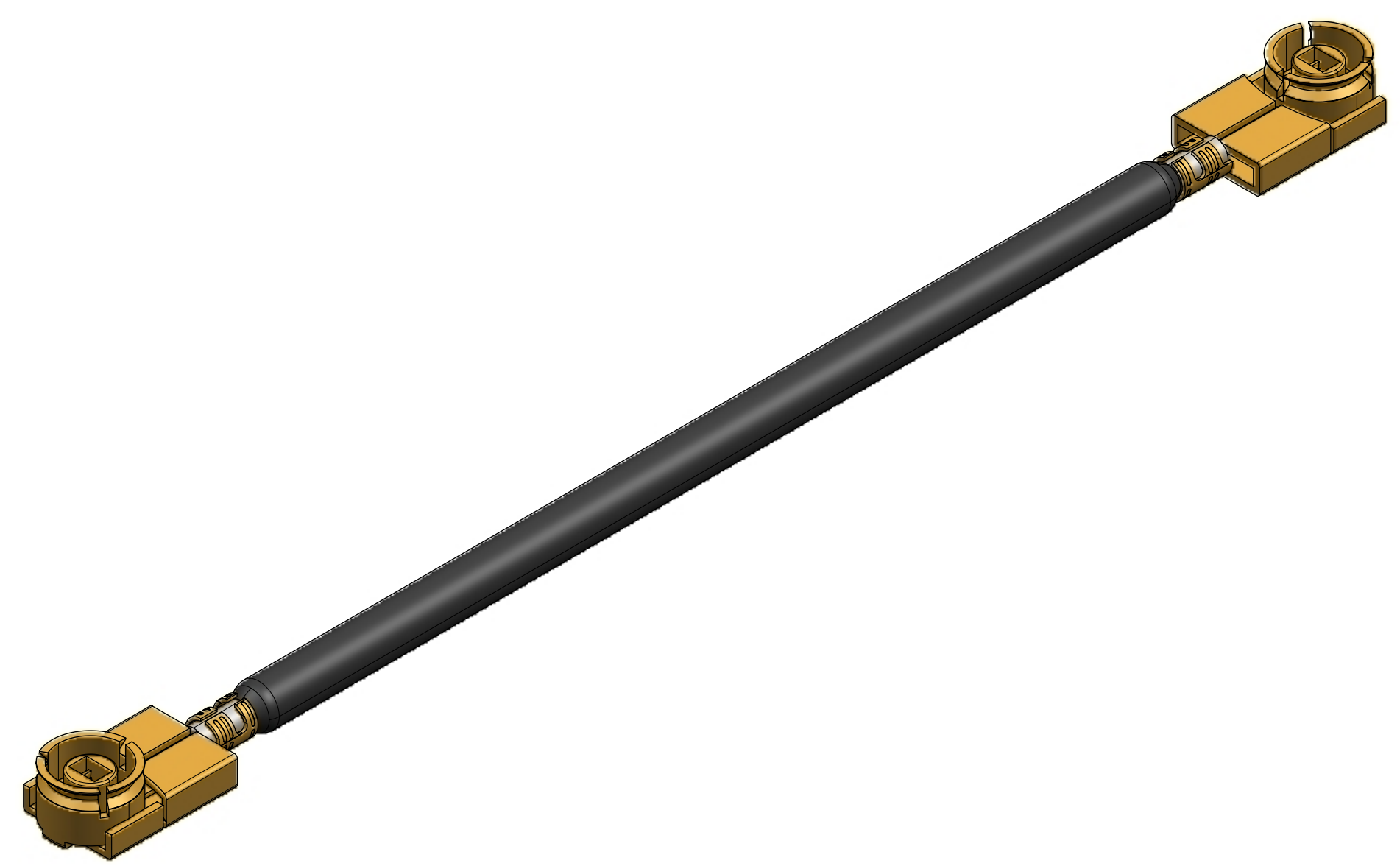
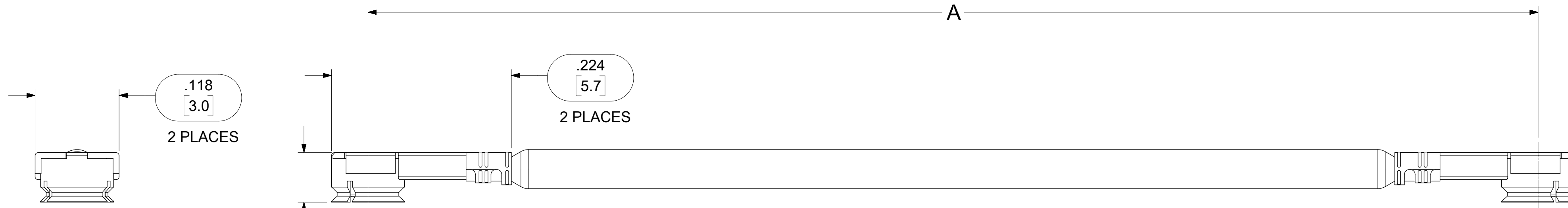
MCRF CONNECTORS:
HOUSINGS: PHOSPHOR BRONZE
FINISH: GOLD

MATED HEIGHT: .098 [2.50]

CONTACTS: PHOSPHOR BRONZE
FINISH: GOLD

INSULATORS: PBT

CABLE: 1.37 OR EQUIVALENT
COLOR: BLACK



73116-1520	2.756±.125	70.00±3.17	BULK
73116-0049	60.00±1.50	1524.0±38.1	SINGLE
73116-0048	7.500±.125	190.50±3.17	BULK
73116-0047	12.000±.250	304.80±6.34	SINGLE
73116-0046	9.000±.250	228.60±6.34	SINGLE
73116-0045	6.000±.125	152.40±3.17	SINGLE
73116-0044	3.000±.125	76.20±3.17	SINGLE
73116-0043	12.000±.250	304.80±6.34	BULK
73116-0042	9.000±.250	228.60±6.34	BULK
73116-0041	6.000±.125	152.40±3.17	BULK
73116-0040	3.000±.125	76.20±3.17	BULK
PART NO.	IN	MM	PACKAGING
	DIM A		

SYMBOLS	THIS DRAWING CONTAINS INFORMATION THAT IS PROPRIETARY TO MOLEX ELECTRONIC TECHNOLOGIES, LLC AND SHOULD NOT BE USED WITHOUT WRITTEN PERMISSION			
	DIMENSION UNITS		SCALE	
▽ = 0	INCH	NTS		CURRENT REV DESC: REDRAWN AND REVISED
▽ = 0	GENERAL TOLERANCES (UNLESS SPECIFIED)			
▽ = 0		MM	INCH	EC NO: 175770 DRWN: LMEIER 2018/04/26 CHK'D: SSSHAH 2018/04/30 APPR: AROBERTSON 2018/04/30
▽ = 0	4 PLACES	±	±	
▽ = 0	3 PLACES	±	± 0.005	INITIAL REVISION: DRWN: JLEE02 2011/08/22 APPR: JWIENER 2011/09/02
▽ = 0	2 PLACES	± 0.13	± 0.01	
▽ = 0	1 PLACE	± 0.25	±	DRAFT WHERE APPLICABLE MUST REMAIN WITHIN DIMENSIONS
▽ = 0	0 PLACES	±	±	
▽ = 0	ANGULAR TOL ± 2.0 °		THIRD ANGLE PROJECTION	DRAWING
▽ = 0			C-SIZE	SERIES
DOCUMENT STATUS		P1	RELEASE DATE	2018/04/30 15:31:43

molex

CA, MCRF TO MCRF, 1.37MM, H25
CA-MCRF/MCRF, EWR-12052

PRODUCT CUSTOMER DRAWING

DOCUMENT NUMBER	DOC TYPE	DOC PART	REVISION
SD-73116-004	PSD	001	A4
MATERIAL NUMBER	CUSTOMER	SHEET NUMBER	
SEE TABLE		1 OF 1	