



Electrical Specifications

Center Frequency: 70 MHz
Bandwidth: 20 MHz
Passband: 60-80 MHz
Group Delay: 5 nsec
Rejection: >50 dB @ 0-45 MHz
 >50 dB @ 95-500 MHz

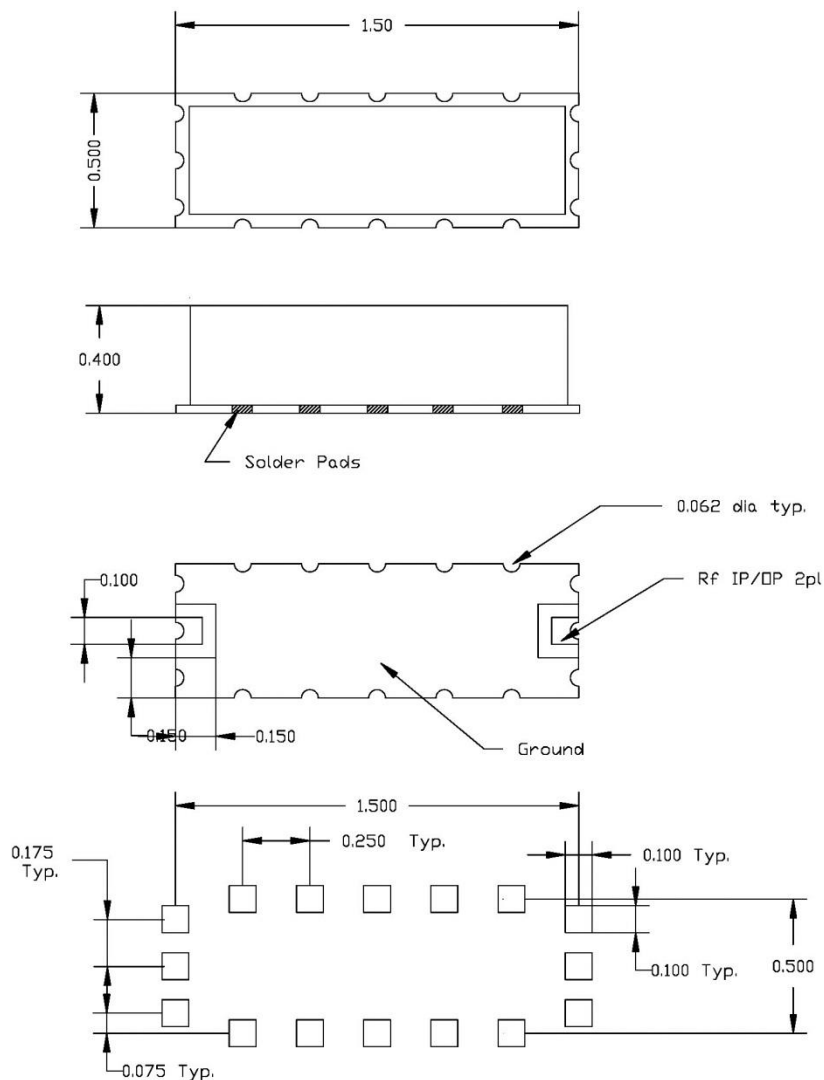
Mechanical

Mounting Method: SMT
Dimensions: 1.50 x 0.50 x 0.40 Inches

Environmental

Operating Temperature: -30 to +70° C
Storage Temperature: -40 to +85° C

Outline Drawing:





Response Plot:

