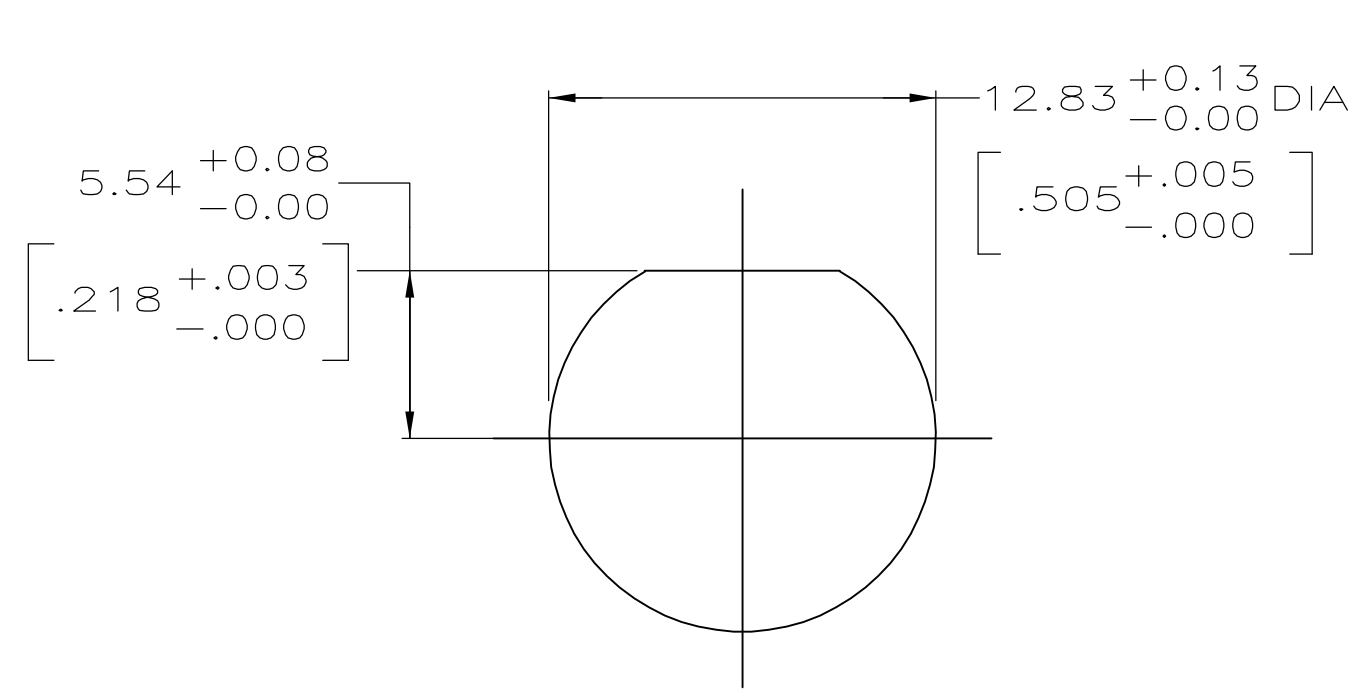
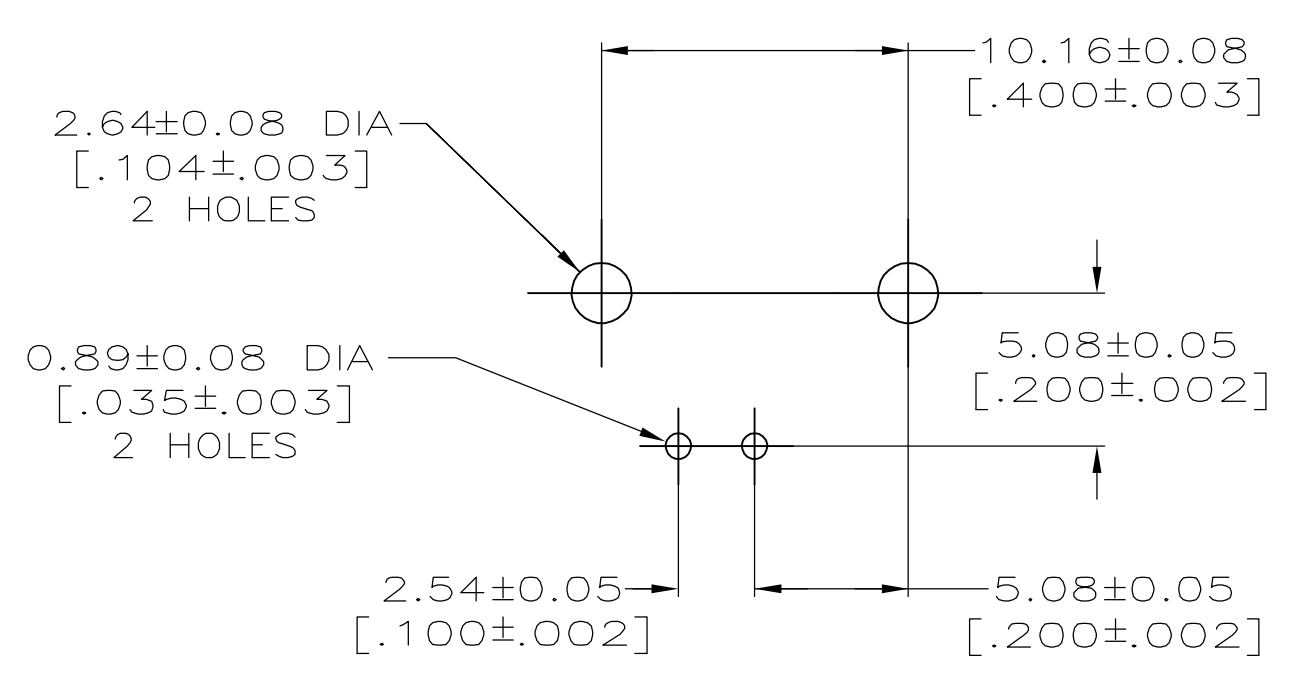


- 1 ZINC PER QQ-Z-363.
- 2 POLYMETHYLPENTENE, GENERAL PURPOSE.
- 3 BERYLLIUM COPPER PER QQ-C-530.
- 4 BRASS PER ASTM-B-453.
- 5 NICKEL PLATE PER QQ-N-290, 3.81 μm [.000150] MINIMUM THICK.
- 6 TIN PLATE PER ASTM-B-545, 3.81 μm [.000150] MINIMUM THICK.
- 7 GOLD PLATE PER ASTM-B-488, 0.76 μm [.000030] MINIMUM THICK.
- 8. SEE INSTRUCTION SHEET 408-2769.



RECOMMENDED PANEL CUTOUT



PCB CONFIGURATION

6274072-1  
PART NUMBER

THIS DRAWING IS A CONTROLLED DOCUMENT.		DWN J. ALCORTA - 27APR2005		Tyco Electronics Corporation Harrisburg, PA 17105-3608	
DIMENSIONS: mm (INCHES)		CHK J. HAVENER - 27APR2005		APVD J. LIPPERT - 27APR2005	NAME JACK, RIGHT ANGLE, 75 OHM, LOW PROFILE, PCB, BNC
TOLERANCES UNLESS OTHERWISE SPECIFIED:		PRODUCT SPEC		APPLICATION SPEC	WEIGHT
0. PLC ± - 1. PLC ± - 2. PLC ± 0.20 [.008] 3. PLC ± - 4. PLC ± - ANGLES ± -		SIZE A1		CAGE CODE 00779	DRAWING NO. 6274072
MATERIAL SEE NOTES 1 - 5		CUSTOMER DRAWING		SCALE 4:1	SHEET 1 OF 1