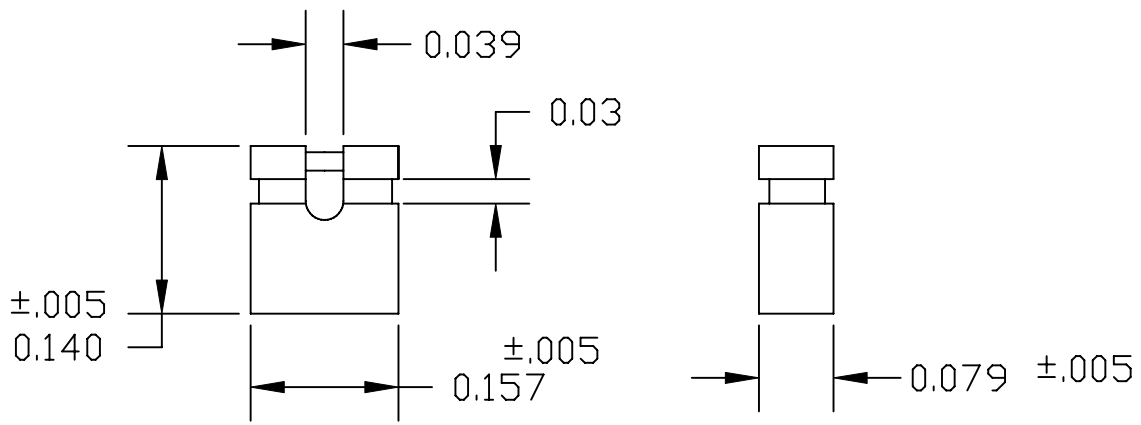



DESCRIPTION: 2MM SHUNT STANDARD PROFILE, .140"



MATERIAL: HOUSING: 30± GLASS FILLED PBT (UL 94V-0) BLACK
 CONTACT: 5191 PHOSPHOR BRONZE
 PLATING: GOLD FLASH
 RoHS COMPLIANT

ELECTRICALS: CURRENT RATING: 3.0 AMPERE MAX.
 CONTACT RESISTANCE: 30 MILLIOHM MAX.
 DIELECTRIC WITHSTANDING VOLTAGE: 650V AC RMS AT SEA LEVEL
 INSULATION RESISTANCE: 1000 MOHMS MAX.
 OPERATING TEMP: -55°C TO 105°C

	THESE DRAWINGS AND SPECIFICATIONS ARE THE PROPERTY OF NorComp AND SHALL NOT BE REPRODUCED, COPIED OR USED AS THE BASIS FOR THE MANUFACTURE OF SALE OF APPARATUS WITHOUT WRITTEN PERMISSION.		DRAWN: PAM JENKINS	DATE: 1-17-06
			CHECKED:	DATE:
<h1>NorComp</h1>		SCALE: NTS	SHEET 1 OF 1	REV 1
		DWG NO. 810-002-SP2L001		