

MATERIALS AND FINISHES:
 BODY, CRIMP TUBE: BRASS
 PLATED: NICKEL (100μ-in MIN)

JAM NUT : BRASS
 PLATED: NICKEL (70μ-in MIN)

CENTER CONTACT: BERYLLIUM COPPER
 PLATED: SEE TABLE
 OVER NICKEL (100μ-in MIN)

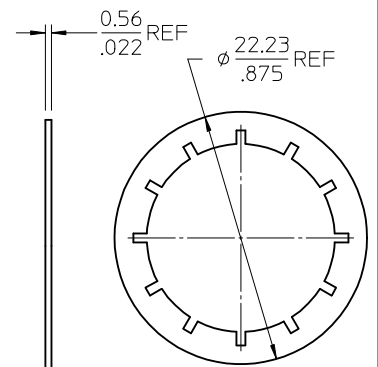
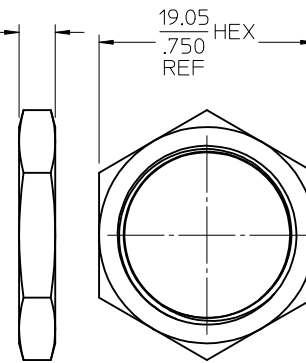
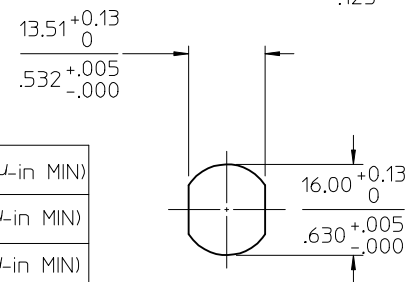
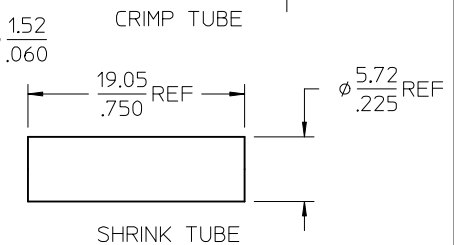
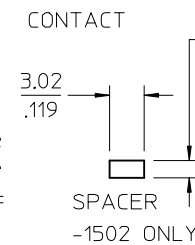
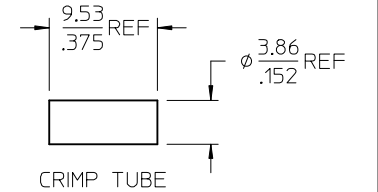
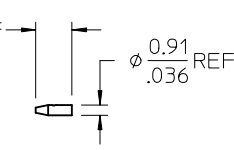
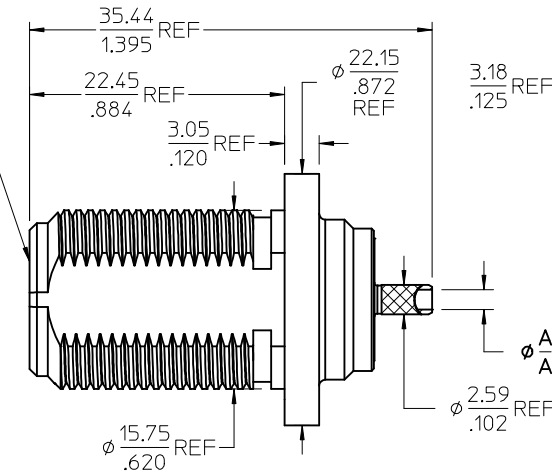
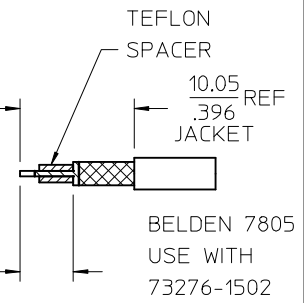
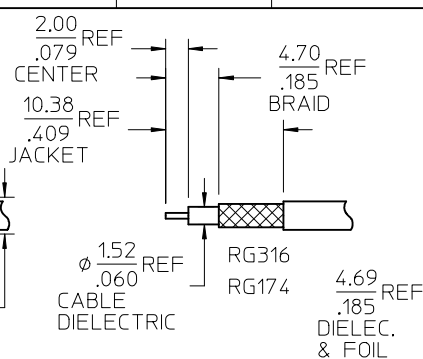
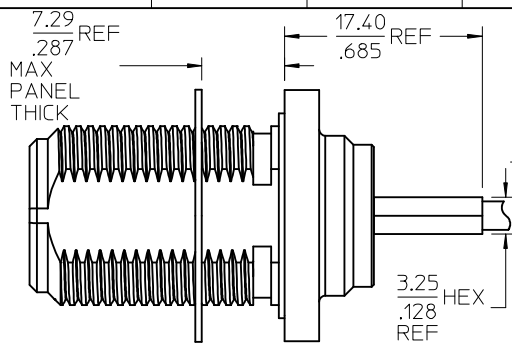
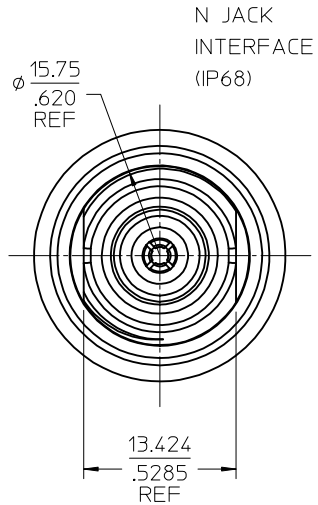
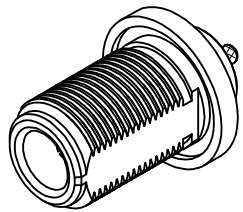
CABLE CONTACT: BRASS
 PLATED: GOLD (10μ-in MIN)
 OVER NICKEL (100μ-in MIN)

LOCKWASHER: PHOSPHOR BRONZE
 PLATED: NICKEL (100μ-in MIN)

INSULATOR, SPACER: PTFE

GASKET: SILICONE RUBBER

SHRINK TUBE: VERSAFIT 3/16-0



73276-1502	BULK	1.613 / .0635	BELDEN	GOLD (30μ-in MIN)
73276-1501	ONE PER BAG	1.613 / .0635	RG316	GOLD (10μ-in MIN)
73276-1500	BULK	1.613 / .0635	RG316	GOLD (10μ-in MIN)
PART NO.	PACKAGING	MM / IN	CABLE TYPE	CENTER CONTACT FINISH
		DIM A		

RECOMMENDED MOUNTING HOLE PATTERN

JAM NUT

LOCKWASHER

MIL-STD-348B, FIG. 304.1	INTERFACE
SPECIFICATION	DESCRIPTION

CHG: UPD VIEWS FOR BODY DESIGN CHANGE UPD MAT & FINISH NOTES, TABULATED CENTER CONTACT FINISH.
 EC NO: URF2016-0824
 DRW:PSMAM102 2016/06/08
 CHKD:BBB 2016/06/08
 APPR:AROBERTSON 2016/06/23

QUALITY SYMBOLS
 ▽=0
 ▽=0

GENERAL TOLERANCES (UNLESS SPECIFIED)

	mm	INCH
4 PLACES	± .10	± .004
3 PLACES	± .15	± .006
2 PLACES	± .25	± .010
1 PLACE	± .50	± .020
ANGULAR ± 2 °		

DRAFT WHERE APPLICABLE MUST REMAIN WITHIN DIMENSIONS

DIMENSION STYLE
 MM/IN

DRAWN BY	DATE
SSS	2008/01/15
CHECKED BY	DATE
AZR	2008/01/15
APPROVED BY	DATE
JDW	2008/01/15

MATERIAL NO. SEE TABLE
 SIZE C

SCALE
 DESIGN UNITS
 INCH

THIRD ANGLE PROJECTION

TITLE
 N JACK IP68 BLKHD RM
 RG316 BELDEN 7805
 EWR-3517, N-JC/BLK

Molex MOLEX INCORPORATED

DOCUMENT NO. SD-73276-150
 SHEET NO. 1 OF 1

THIS DRAWING CONTAINS INFORMATION THAT IS PROPRIETARY TO MOLEX INCORPORATED AND SHOULD NOT BE USED WITHOUT WRITTEN PERMISSION