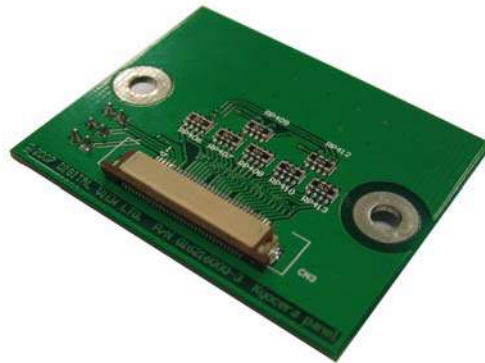


Connector Board P/N 416216000-3

The connector board P/N 416216000-3 designs for Kyocera panels.



Top side



Bottom side

Jumper Settings:

JP1- Horizontal display mode select (Left / Right) :
 Closed : Low Open: High

JP2 - Vertical display mode select (Up / Down) :
 Closed : Low Open: High

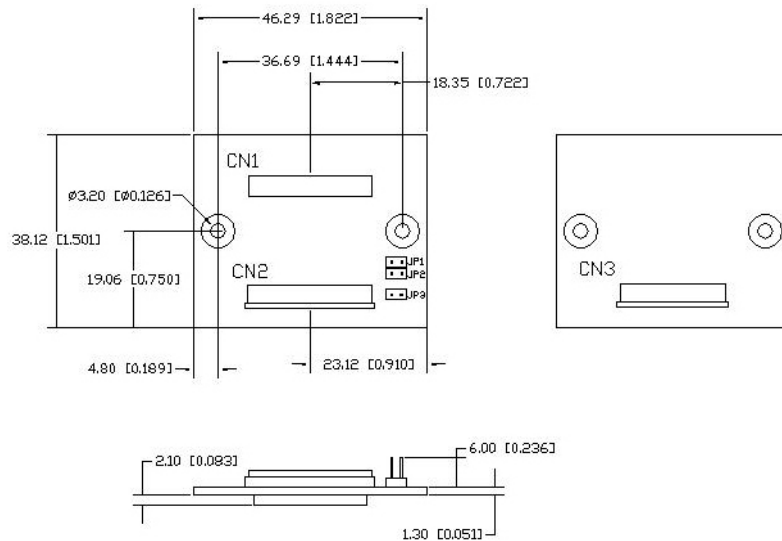
JP3 –Vertical display position (V/Q) :
 Closed : Low Open: High

* Please refer to the panel specification to select the corresponding display mode setting.

Use of connectors:

Connector	Connector type
CN1	Hirose DF9-41P-1V
CN2	40 ways 0.5mm pitch bottom contact FFC connector - Neltron 1226-0240P
CN3	33 ways 0.5mm pitch bottom contact FFC connector - Neltron 1226-0233P

Mechanical Drawing :



Pin Assignments :

CN1 - Hirose DF9-41P-1V

PIN	SYMBOL	DESCRIPTION
1	GND	Ground
2	DCLK	Dot clock
3	GND	Ground
4	HS	Horizontal sync
5	VS	Vertical sync
6	R0	Data bit R0
7	GND	Ground
8	GND	Ground
9	R2	Data bit R2
10	R3	Data bit R3
11	R4	Data bit R4
12	R1	Data bit R1
13	R5	Data bit R5
14	R6	Data bit R6
15	R7	Data bit R7
16	GND	Ground
17	G0	Data bit G0
18	GND	Ground
19	G2	Data bit G2
20	G3	Data bit G3
21	G4	Data bit G4
22	G1	Data bit G1
23	G5	Data bit G5
24	G6	Data bit G6
25	G7	Data bit G7
26	GND	Ground
27	B0	Data bit B0
28	GND	Ground
29	B2	Data bit B2
30	B3	Data bit B3
31	B4	Data bit B4
32	B1	Data bit B1
33	B5	Data bit B5
34	B6	Data bit B6
35	B7	Data bit B7
36	GND	Ground
37	DE	Display enable
38	GND(RL)	Ground
39	VLCD	Panel power supply
40	VLCD	Panel power supply
41	GND(UD)	Ground

CN2 – 40 ways 0.5mm pitch bottom contact FFC connector - Neltron 1226-0240P

PIN	SYMBOL	DESCRIPTION
1	GND	Ground
2	GND	Ground
3	DCLK	Dot clock
4	GND	Ground
5	GND	Ground
6	NC	No connection
7	R2	Data bit R2
8	R3	Data bit R3
9	R4	Data bit R4
10	GND	Ground
11	R5	Data bit R5
12	R6	Data bit R6
13	R7	Data bit R7
14	GND	Ground
15	G2	Data bit G2
16	G3	Data bit G3
17	G4	Data bit G4
18	GND	Ground
19	G5	Data bit G5
20	G6	Data bit G6
21	G7	Data bit G7
22	GND	Ground
23	B2	Data bit B2
24	B3	Data bit B3
25	B4	Data bit B4
26	GND	Ground
27	B5	Data bit B5
28	B6	Data bit B6
29	B7	Data bit B7
30	GND	Ground
31	HS	Horizontal sync
32	GND	Ground
33	VS	Vertical sync
34	GND	Ground
35	DE	Display enable
36	NC	No connection
37	VLCD	Panel power supply
38	VLCD	Panel power supply
39	VLCD	Panel power supply
40	VLCD	Panel power supply

CN3 - 33 ways 0.5mm pitch bottom contact FFC connector - Neltron 1226-0233P

PIN	SYMBOL	DESCRIPTION
1	GND	Ground
2	V/Q	Vertical display position
3	U/D	Vertical display mode select signal
4	R/L	Horizontal display mode select signal
5	VLCD	Panel power supply
6	VLCD	Panel power supply
7	DE	Display enable
8	GND	Ground
9	B7	Data bit B7
10	B6	Data bit B6
11	B5	Data bit B5
12	B4	Data bit B4
13	B3	Data bit B3
14	B2	Data bit B2
15	GND	Ground
16	G7	Data bit G7
17	G6	Data bit G6
18	G5	Data bit G5
19	G4	Data bit G4
20	G3	Data bit G3
21	G2	Data bit G2
22	GND	Ground
23	R7	Data bit R7
24	R6	Data bit R6
25	R5	Data bit R5
26	R4	Data bit R4
27	R3	Data bit R3
28	R2	Data bit R2
29	GND	Ground
30	VS	Vertical sync
31	HS	Horizontal sync
32	DCLK	Dot clock
33	GND	Ground