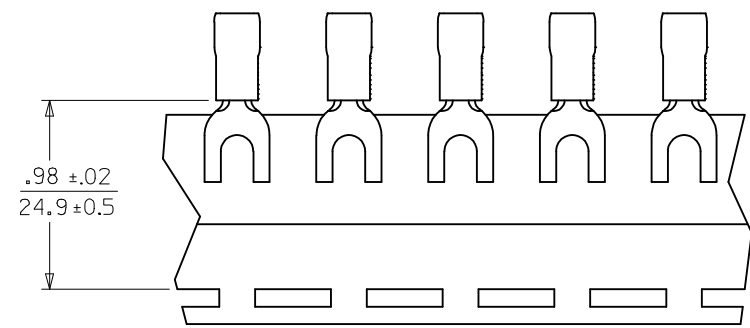
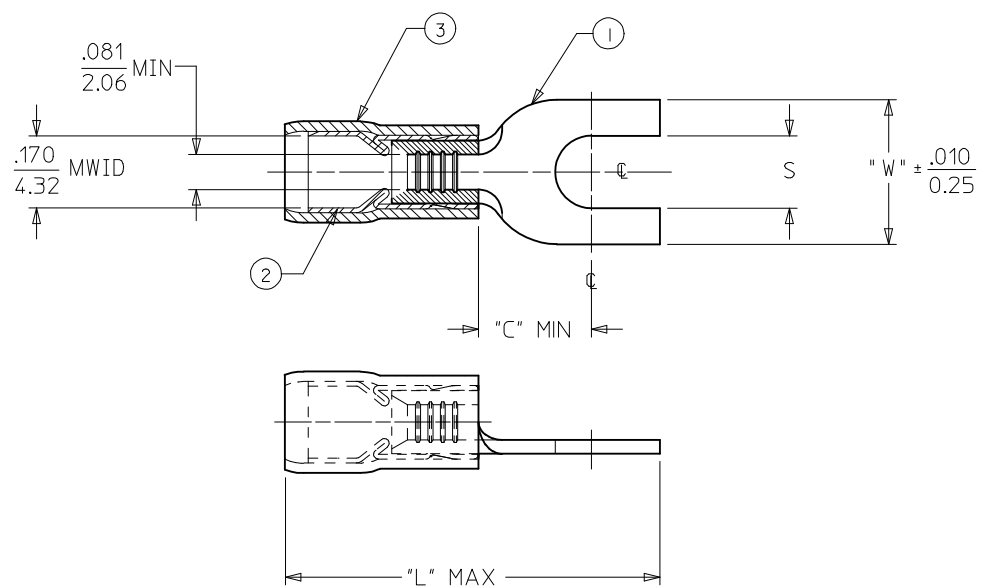


MATERIAL NUMBER	ALTERNATE NUMBER	STUD SIZE	"S"	"C" MIN	"W"	"L" MAX	PACKAGING
191390038	BB-8471-04	4	.119/(3.02)	.225 (5.72)	.247 (6.27)	.780 (19.81)	LOOSE PIECE
191390039	BB-8471-06	6	.146/(3.71)	.225 (5.72)	.247 (6.27)	.780 (19.81)	
191390042	BB-8781-06	6	.146/(3.71)	.229 (5.82)	.295 (7.49)	.785 (19.18)	
191390044	BB-8781-08	8	.173/(4.39)	.229 (5.82)	.295 (7.49)	.785 (19.18)	
191360045	BB-8781-10	10	.198/(5.03)	.229 (5.82)	.295 (7.49)	.785 (19.18)	
191390040	BB-8471-06T	6	.146/(3.71)	.225 (5.72)	.247 (6.27)	.780 (19.81)	TAPE MOUNTED
191390043	BB-8781-06T	6	.146/(3.71)	.229 (5.82)	.295 (7.49)	.785 (19.18)	
191390068	BB-8781-10T	10	.198/(5.03)	.229 (5.82)	.295 (7.49)	.785 (19.18)	



CUSTOMER DRAWING

- NOTES:
1. MATERIAL: COPPER .031 THICK
PLATING: MATTE TIN
 2. FERRULE: TIN-PLATED BRASS.
 3. INSULATION: BLUE NYLON.
 4. MWID = MAXIMUM WIRE INSULATION DIA.
 5. PARTS ARE ROHS COMPLIANT.

RELEASED EC NO: IPG2014-110 DRWG:GRO/JAS01 2013/12/12 CHKD:JMAGNEIL 2013/12/13 APPR:JMAGNEIL 2014/01/08 REV A	QUALITY SYMBOLS	GENERAL TOLERANCES (UNLESS SPECIFIED)	DIMENSION STYLE	SCALE	DESIGN UNITS	THIRD ANGLE PROJECTION
	▽=0 ▽=0	mm INCH 4 PLACES ± --- ± --- 3 PLACES ± --- ± .005 2 PLACES ± 0.13 ± .01 1 PLACE ± 0.25 ± --- 0 PLACE ± ±	IN/MM	4:1	INCH	DRAWN BY DATE EDB 2000/11/17 CHECKED BY DATE HEB 2000/11/17 APPROVED BY DATE 2014/01/08
	ANGULAR ± ---° DRAFT WHERE APPLICABLE MUST REMAIN WITHIN DIMENSIONS	MATERIAL NO.	TITLE	SPADE TONGUE TERMINAL (BLOCK) AVIKRIMP - 800 16-14 AWG molex		
	SEE CHART	DOCUMENT NO.	SD-19139-005			
	SIZE B	THIS DRAWING CONTAINS INFORMATION THAT IS PROPRIETARY TO MOLEX INCORPORATED AND SHOULD NOT BE USED WITHOUT WRITTEN PERMISSION				