

SPECIFICATIONS:

**MATERIALS:**

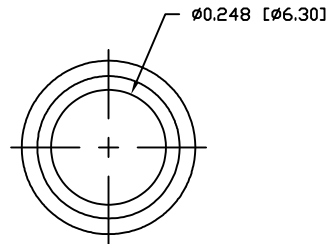
HOUSING: PBT, UL94 V-0, BLACK  
 CONTACTS: GOLD PLATED BRASS  
 NUT: NICKEL PLATED BRASS  
 SHELL: NICKEL PLATED BRASS

**ELECTRICAL:**

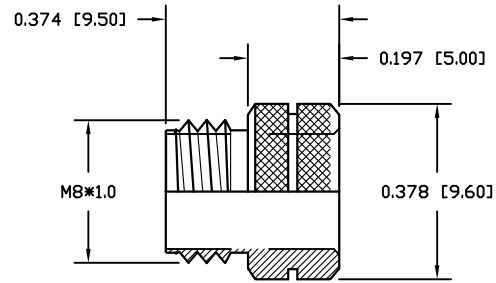
RATED CURRENT: 1.5A  
 RATED VOLTAGE: 30V  
 INSULATION RESISTANCE: 100 MOhms MIN.  
 CONTACT RESISTANCE: 10 mOhms MAX.  
 MAX WIRE AWG: 26 AWG

**ENVIRONMENT:**

OPERATING TEMPERATURE: -40°C TO +85°C  
 WATER PROOF: IP66/IP67 (SEE NOTE BELOW)



NUT

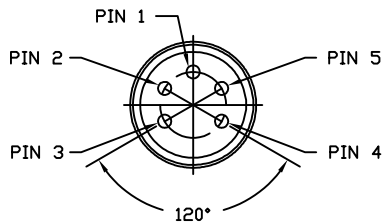


NO O-RING

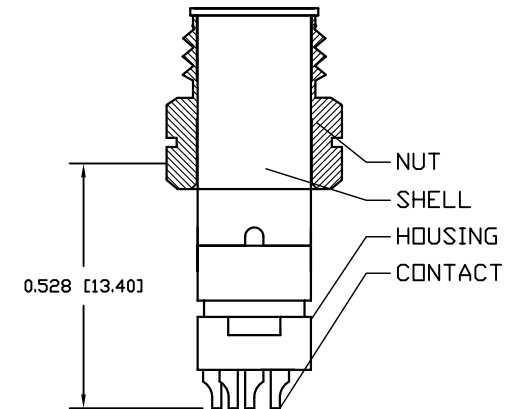
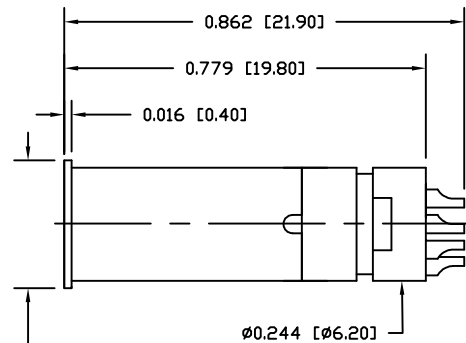
WHEN MATING WITH NORCOMP CONNECTORS, ONLY AN IP66 RATING CAN BE ACHIEVED IN MATING AREA BETWEEN CONNECTORS. CONNECTOR IS OTHERWISE IP67 AND MAY BE FULLY IP67 IF MATED WITH COMPETITOR PARTS.

854A005-103RLSY

1 = GOLD FLASH  
 4 = 10µ" GOLD



Ø0.276 [7.00]



RoHS COMPLIANT

UNITS = inch [mm]

DO NOT SCALE FROM DRAWING



THESE DRAWINGS AND SPECIFICATIONS ARE THE PROPERTY OF NorComp AND SHALL NOT BE REPRODUCED, COPIED OR USED AS THE BASIS FOR THE MANUFACTURE OR SALE OF APPARATUS WITHOUT WRITTEN PERMISSION.

DRAWN: M. SIGMON

DATE: 03/04/2016

NorComp

SCALE: NTS

SHEET 1 OF 1

REV 5

DWG NO.

854A005-103RLSY