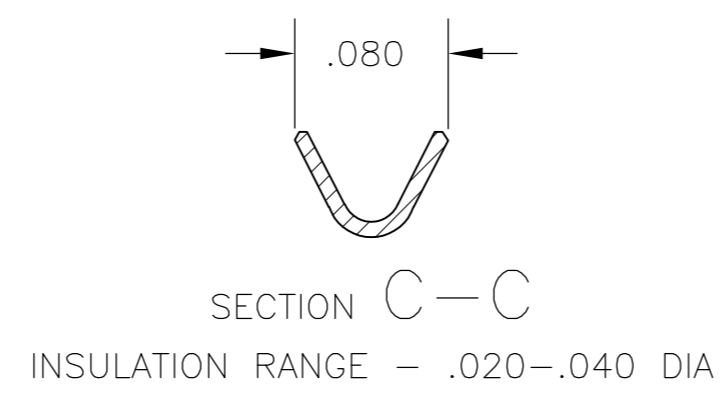
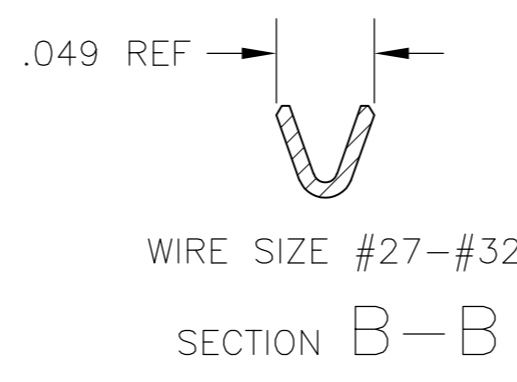
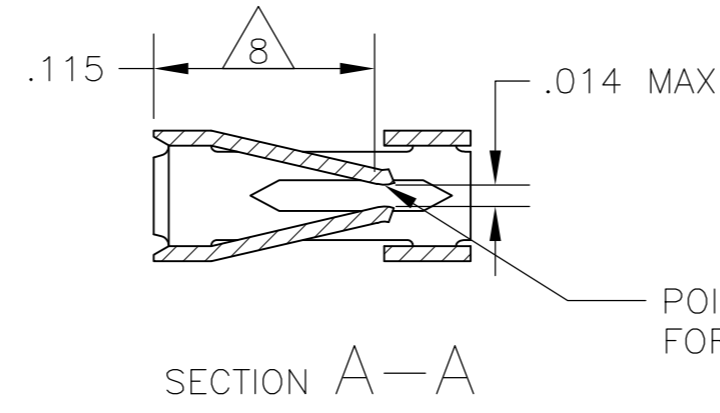
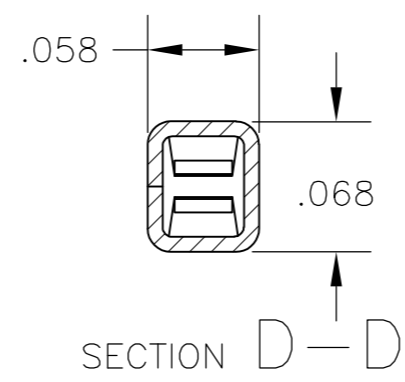
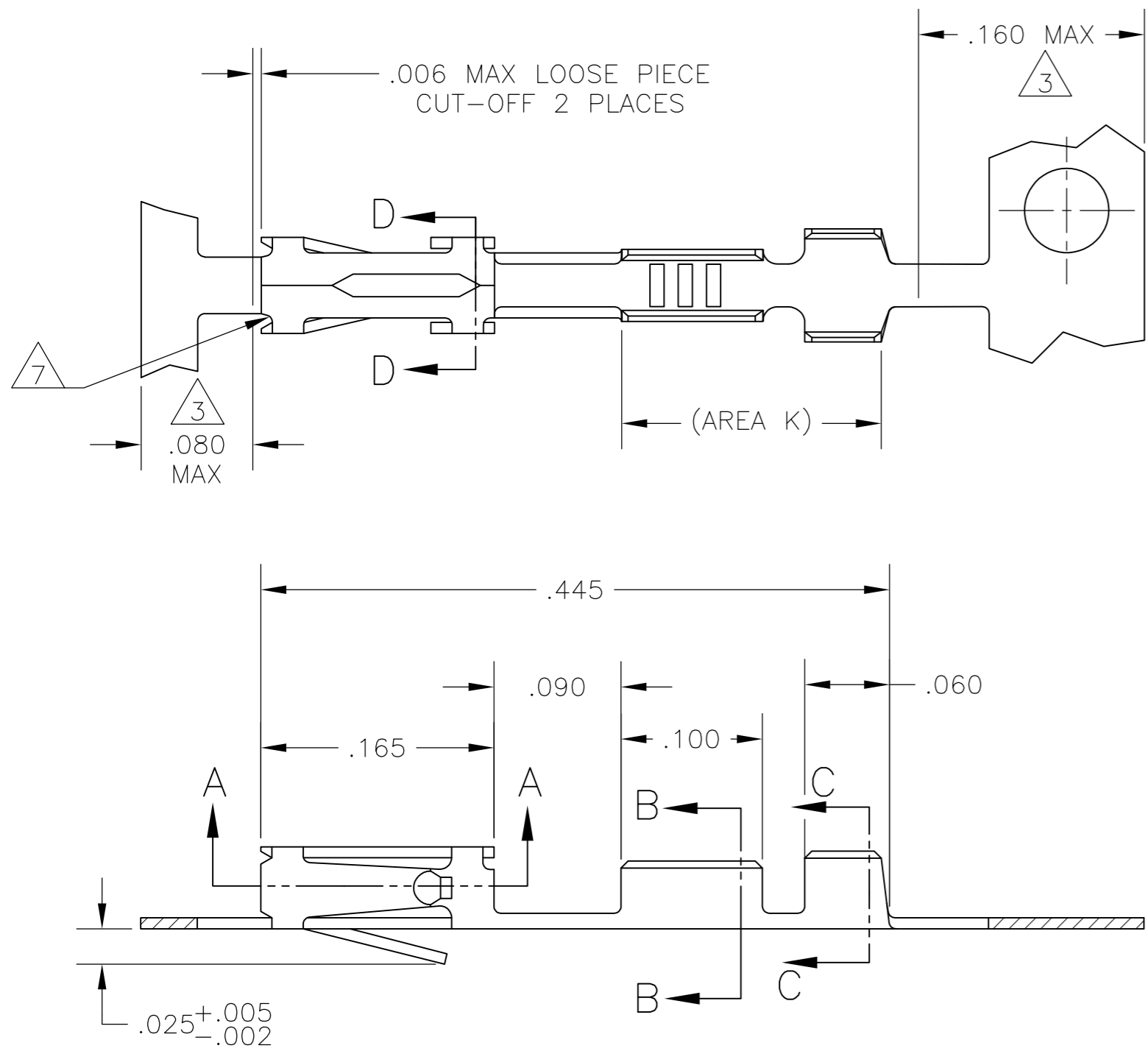


THIS DRAWING IS UNPUBLISHED. RELEASED FOR PUBLICATION
 © COPYRIGHT - By - ALL RIGHTS RESERVED.

LOC		DIST		REVISIONS			
P	LTR	DESCRIPTION		DATE	DWN	APVD	
AD	00	J		REVISED PER ECO-15-004633	18JUN2015	NK	JO



- 1 .000030 GOLD ON CONTACT AREA, GOLD FLASH ON REMINDER OVER .000050 NICKEL.
- 2 RELEED FOR MIN APPLICATOR.
- 3 GOLD PLATING IS NOT REQUIRED IN THIS AREA.
- 4 HAND TOOL MUSED FOR CRIMPING L.P. CONTACT IS #90358-1.
- 5 .0000150 GOLD ON CONTACT AREA, .00010-.000200 93/7 BRIGHT TIN-LEAD IN AREA K, ALL OVER .000050 NICKEL.
- 6 .000030 GOLD ON CONTACT AREA, .00010-.000200 93/7 BRIGHT TIN-LEAD IN AREA K, ALL OVER .000050 NICKEL.
- 7 CUT-OUTS ON THE BOX ARE AT MANUFACTURERS OPTION.
- 8 POINT OF MEASUREMENT FOR PLATING THICKNESS(INSIDE BEAMS).
- 9 OBSOLETE PART NUMBER.

LOOSE PIECE	4	6	9	102918-6
SUPERCEDED BY 102918-1		6	9	102918-5
LOOSE PIECE	4	5	9	102918-4
		5	9	102918-3
LOOSE PIECE	4	1		102918-2
		1		102918-1
REMARKS	FINISH	PART NUMBER		

THIS DRAWING IS A CONTROLLED DOCUMENT.		DWN KATE HELM 03MAY89	TE Connectivity		
DIMENSIONS: INCHES		CHK C. OBERMAN 02JUN89	NAME		
TOLERANCES UNLESS OTHERWISE SPECIFIED:		APVD J. GESFORD 02JUN89	PRODUCT SPEC		
0 PLC ± -		108-25021			
1 PLC ± -		APPLICATION SPEC			
2 PLC ± -		114-25003			
3 PLC ± .005		WEIGHT -			
4 PLC ± -		SIZE A2 CAGE CODE 00779 C=102918			
ANGLES ± -		DRAWING NO			
FINISH SEE TABLE		RESTRICTED TO -			
MATERIAL CU-NI-SI		SCALE 10:1 SHEET 1 of 1 REV J			
		CUSTOMER DRAWING			