

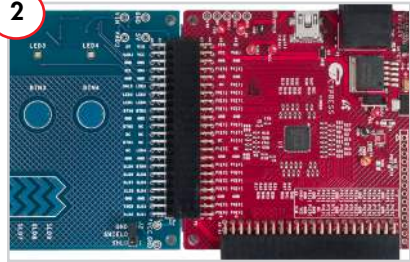
CY3280-24x94 UNIVERSAL CAPSENSE® PROTOTYPING KIT QUICK START GUIDE

1



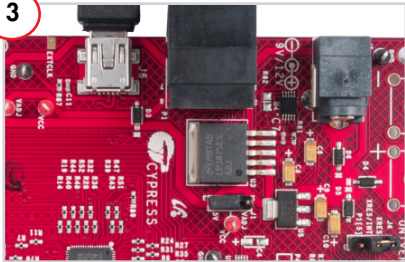
1. Insert the DVD in the DVD drive.
2. Install the kit contents, PSoC Designer, and PSoC Programmer.
3. After the installations, you can use PSoC Designer to customize existing code examples or to create new ones.

2



1. Unpack the CY3280-24x94 Universal CapSense Controller (UCC) Board.
2. Connect the CY3280-SLM board (to be purchased separately) to the P2 connector.

3



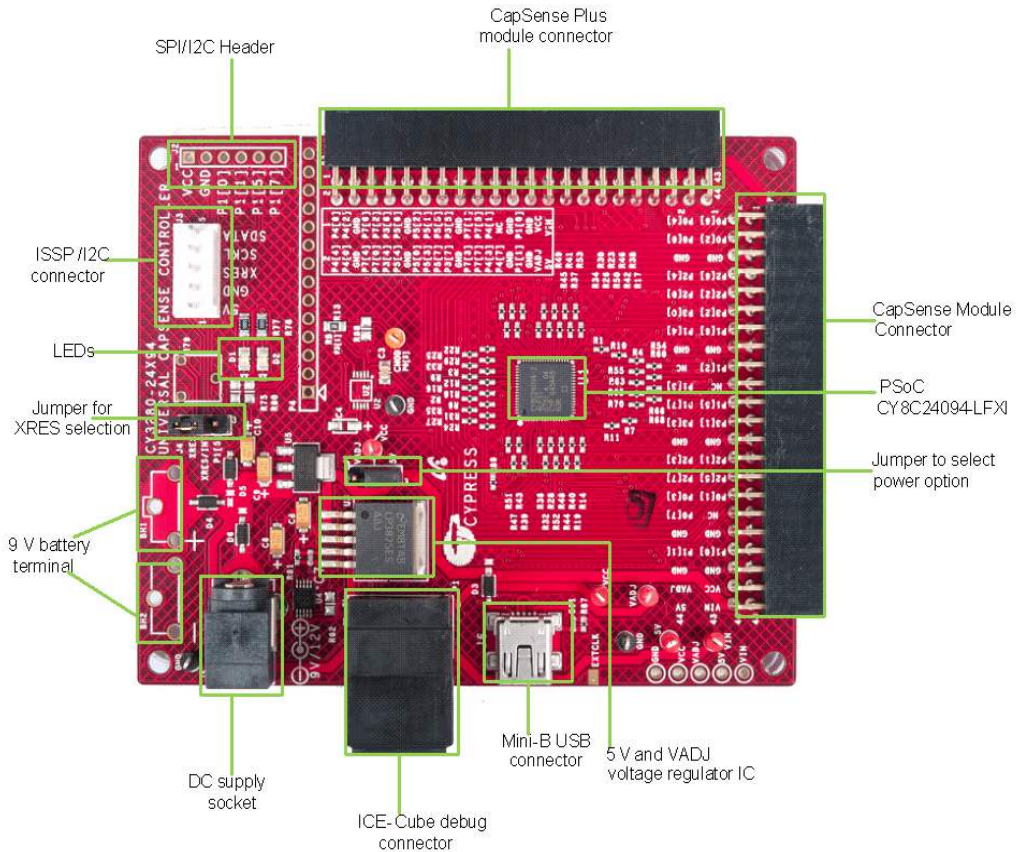
1. Place the shunt between 5 V and VCC of jumper J1.
2. Plug in the USB cable to the CY3280-24x94 UCC board.

4



1. Touch the CapSense button or slider.
2. The respective LEDs light up.

CY3280-24x94 UCC Kit Details



For the latest information about this kit visit
www.cypress.com/go/CY3280-24x94

