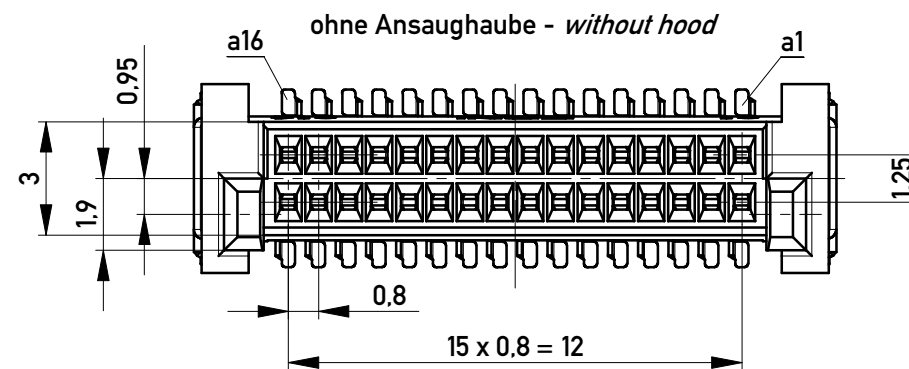
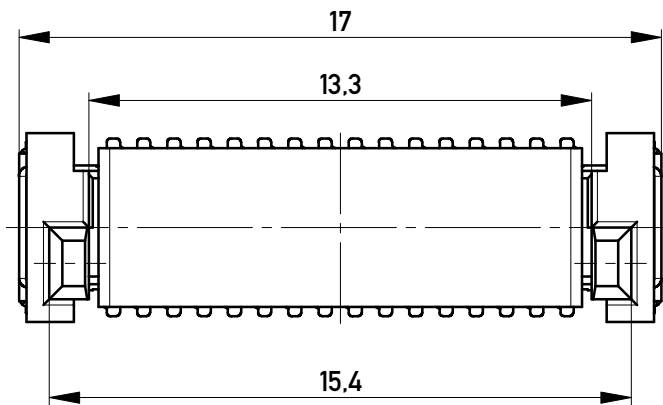
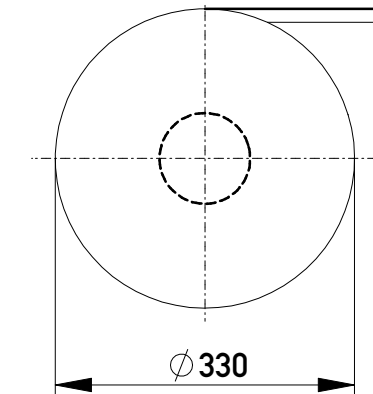
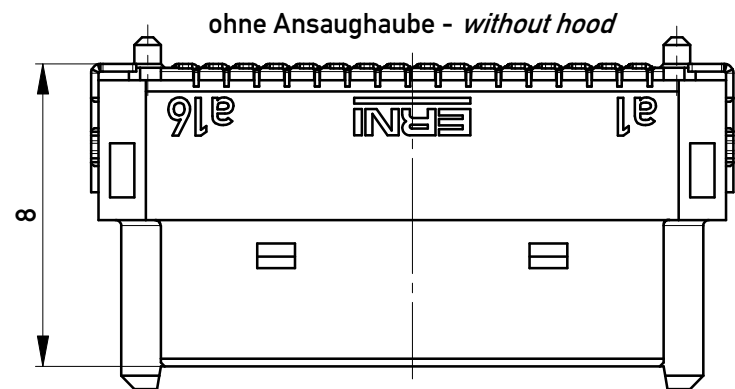


Verpackt im Gurt in Anlehnung an DIN IEC 60286-3  
*Tape on Reel Packaging according to DIN IEC 60286-3*  
 Verpackungseinheit: 420 Stück  
*Packaging unit: 420 pcs*



Abspulrichtung - *Reel off Direction* →

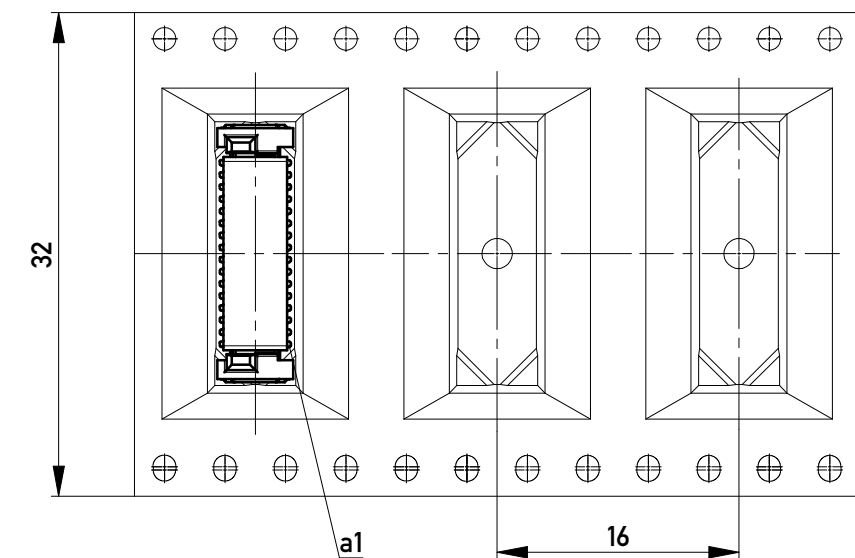


Anforderungsstufe 1  
*Performance Level 1*

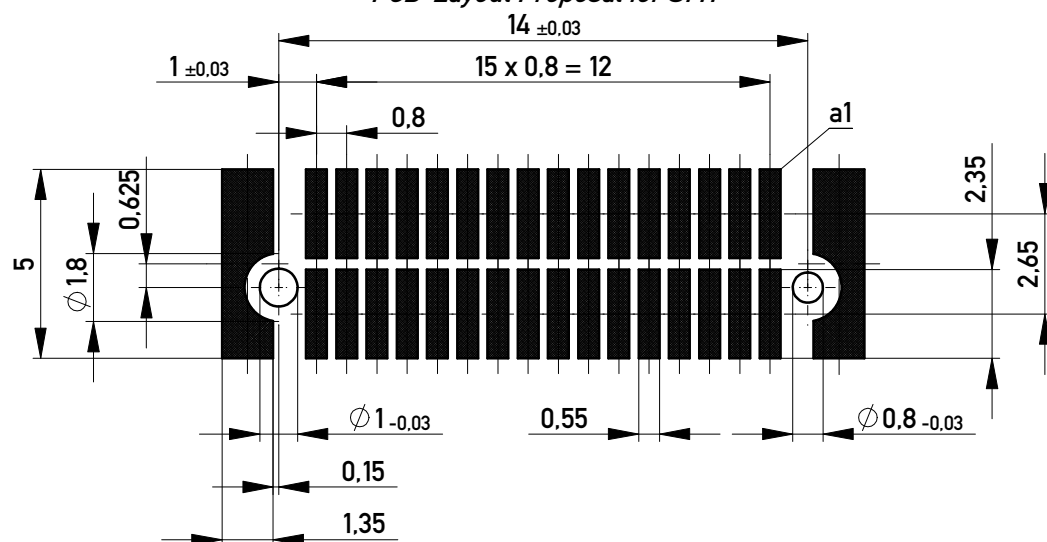
Kontaktbereich vergoldet  
*Mating Area gold plating*

Anschlussbereich verzinkt 4-6 µm  
*Terminal Area 4-6 µm tin plating*

Koplanarität der Anschlüsse ≤ 0,1 mm  
*Coplanarity Area of Termination ≤ 0,1 mm*



Leiterplatten-Layout Vorschlag für SMT  
*PCB-Layout Proposal for SMT*



Copyright by ERNI Production GmbH & Co. KG  
 Proprietary notice pursuant to ISO 16016 to be observed.

Information:		Tolerances	Scale	5:1
All rights reserved. Only for Information. To ensure that this is the latest version of this drawing, please contact one of the ERNI companies before using.		All Dimensions in mm	Designation	
Subject to modification without prior notice. Drawing will not be updated.		0,8 DRC-B, F 8mm, 32 polig 0,8 DRC-B, F 8mm, 32 pin		I
www.ERNI.com		294028		A3
b	23.06.2016	Class		DRCB
Index	Date			