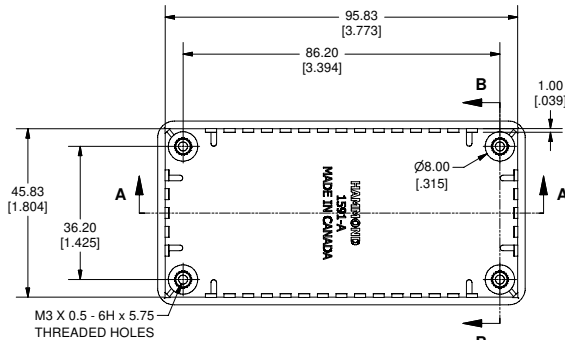
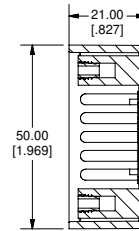




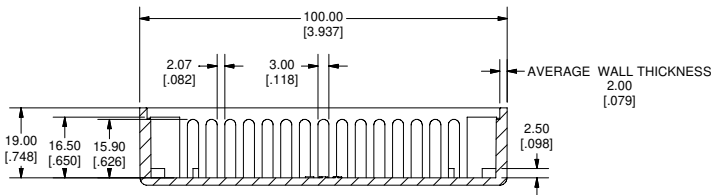
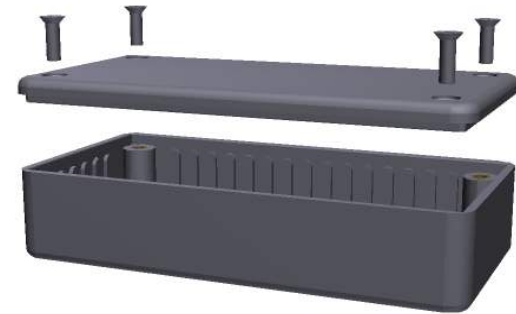
SIDE VIEW OF BOX



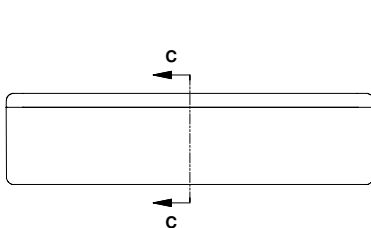
TOP VIEW OF BOX



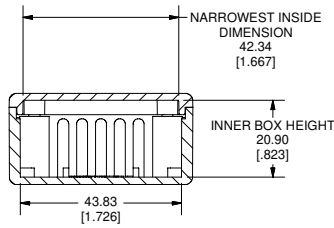
SECTION B-B



SECTION A-A



SIDE VIEW OF ASSEMBLY



SECTION C-C

Note:
Enclosures can be Factory Modified (Milling, Drilling, Printing etc.)
Contact Factory mjm@hammondmfg.com for quotes
Solid models of this enclosure available in STEP or IGES Format.

PART NUMBERS

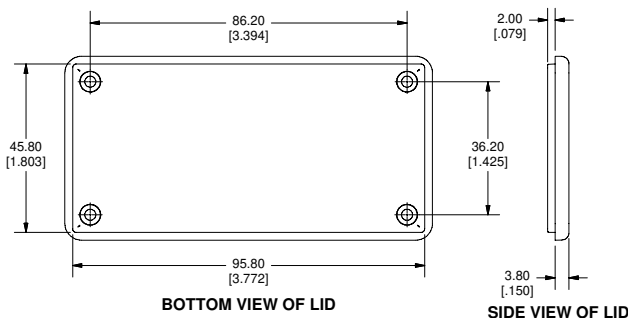
| 1591A Enclosures | | |
|---------------------------|---------------|-------------|
| Material | Colour | Part Number |
| FR ABS UL94 - V0 | Beige | 1591ABG |
| | Black | 1591ABK |
| | Blue | 1591ABU |
| | Grey | 1591AGY |
| GP ABS | Black | 1591ASBK |
| | Grey | 1591ASGY |
| | Ice Blue | 1591ATBU |
| Translucent Polycarbonate | IR Red | 1591ATRD |
| | Crystal Clear | 1591ATCL |

Accessories

| | Description | Part Number |
|---------------|---|----------------------------------|
| Universal Use | PC Board Card Adapters | See Accessories Section |
| | Clear Lids - clear, flame retardant polycarbonate - Lid ONLY | 1591AC |
| | Replacement Screws, Flat Head Phillips Nickel Plated Pkg of 100 | 1591MS100 1591MS100BK (Black) |
| GP ABS | Self Tapping Pkg of 100 | 1591TS100 1591TS100BK (Black) |

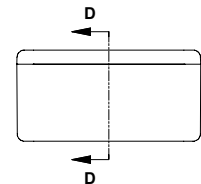
Recommended Torque on Fasteners (no lubrication)

M3 - 0.5 x 10mm Screws 30-40 cN*m
#4 x 0.5 Screws 30-40 cN*m

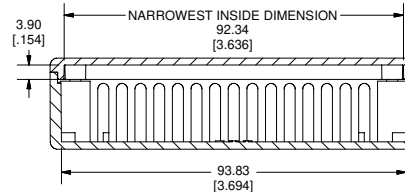


BOTTOM VIEW OF LID

SIDE VIEW OF LID



END VIEW OF ASSEMBLY



SECTION D-D

