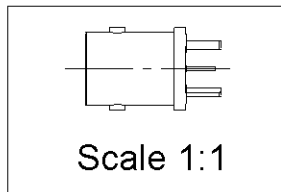
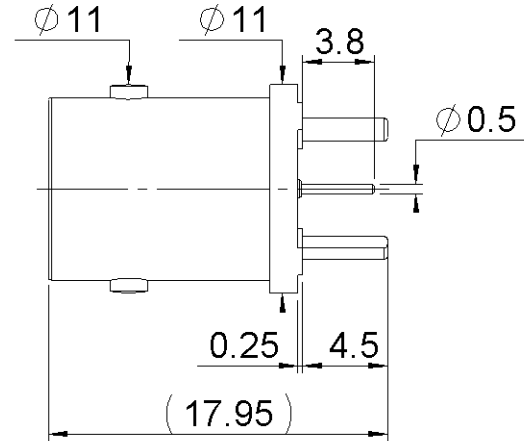
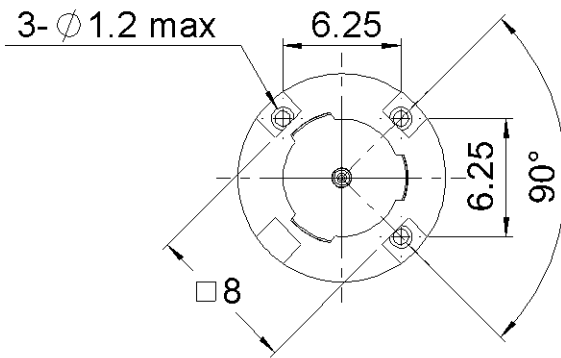
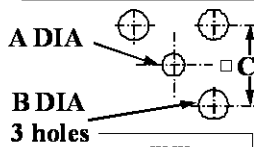


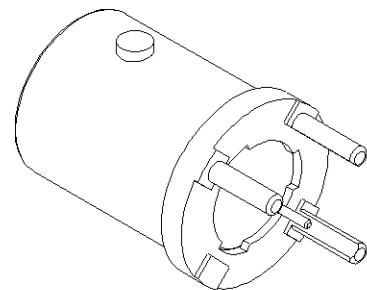
PAGE 1/3	ISSUE 03-03-17B	SERIES BNC 75 HDTV	PART NUMBER R142500740
----------	-----------------	--------------------	------------------------



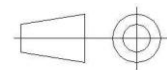
**PANEL CUT OUT**



	mm	
	Maxi	mini
A	0.65	0.55
B	1.39	1.25
C	6.3	6.2



All dimensions are in mm.



COMPONENTS	MATERIALS	PLATING (μm)
Body	<b>ZAMAK</b>	<b>NICKEL .</b>
Center contact	<b>BERYLLIUM COPPER</b>	<b>GOLD OVER NICKEL</b>
Outer contact		
Insulator	<b>PTFE</b>	
Gasket		
Others parts		
-	-	-
-	-	-

PAGE 2/3	ISSUE <b>03-03-17B</b>	SERIES <b>BNC 75 HDTV</b>	PART NUMBER <b>R142500740</b>
----------	------------------------	---------------------------	-------------------------------

**PACKAGING**

Standard	Unit	Other
<b>60</b>	<b>Contact us</b>	<b>Contact us</b>

**ELECTRICAL CHARACTERISTICS**

Impedance		<b>75</b>	Ω
Frequency		<b>DC-12</b>	GHz
VSWR	<b>*1.05</b>	<b>+</b>	<b>0.0350</b> x F(GHz) Maxi
Insertion loss		<b>0.1*</b>	√F(GHz) dB Maxi
RF leakage	- (	<b>-57**</b>	- F(GHz) dB Maxi
Voltage rating		<b>500</b>	Veff Maxi
Dielectric withstanding voltage		<b>1500</b>	Veff mini
Insulation resistance		<b>5000</b>	MΩ mini

**MECHANICAL CHARACTERISTICS**

Center contact retention			
Axial force – Mating End		<b>18</b>	N mini
Axial force – Opposite end		<b>10</b>	N mini
Torque		<b>NA</b>	N.cm mini
Recommended torque			
Mating		<b>NA</b>	N.cm
Panel nut		<b>NA</b>	N.cm
Mating life		<b>500</b>	Cycles mini
Weight		<b>3.5800</b>	g

**ENVIRONMENTAL**

Operating temperature	<b>-65/+165</b>	°C
Hermetic seal	<b>NA</b>	Atm.cm3/s
Panel leakage	<b>NA</b>	

**SPECIFICATION**

**OTHER CHARACTERISTICS**

Assembly instruction:**NA**

Others:

- Data speed rate up to 12.5 Gb/s**
- \*Coaxial Transmission Line Only**
- \*\*Interface only**

PAGE 3/3	ISSUE 03-03-17B	SERIES BNC 75 HDTV	PART NUMBER R142500740
----------	-----------------	--------------------	------------------------

