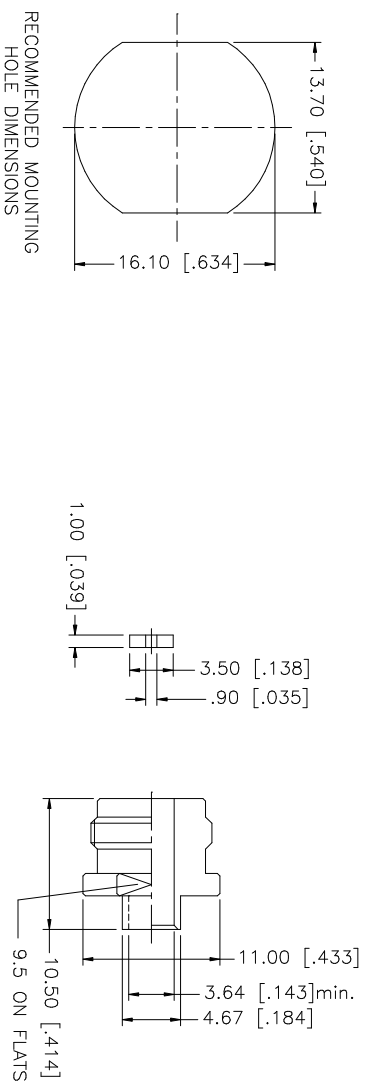
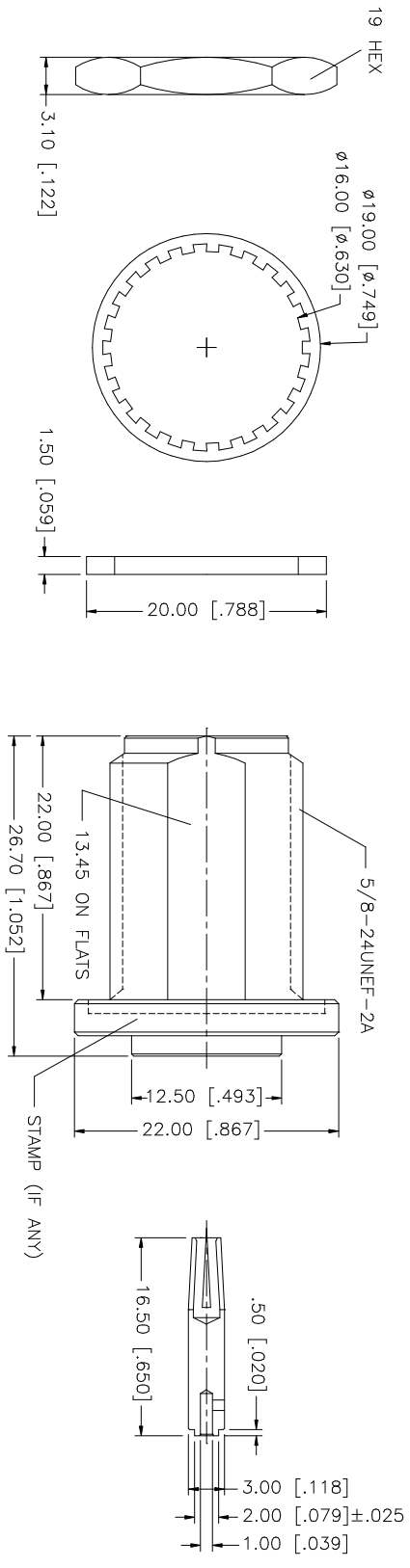


REV.	DATE	DESCRIPTION
A	12/09/03	UPDATE DRAWING FORMAT



NOTE:
 1. CRIMPED CONTACT PIN,
 HEX CRIMP SIZE .100"

QTY	DESCRIPTION	MATERIAL	FINISH	DO NOT SCALE DRAWING	CAD FILE	DWG. NO.	REV.	SIZE	SCALE
1	HEX NUT	BRASS	NEXCOTE		C:/172/172137.DWG	172137.DWG	A	A	NA
1	LOCK WASHER	BRASS	NEXCOTE						
1	GASKET	SILICONE	RED						
1	SOLDER NUT	BRASS	GOLD						
1	INSULATOR	TEFLON	NATURAL						
1	CONTACT PIN	PHOS. BRONZE	GOLD						
1	INNER BODY	BRASS	NEXCOTE						
1	INSULATOR	TEFLON	NATURAL						
1	OUTER BODY	BRASS	NEXCOTE						
	DESCRIPTION								

Amphenol Connex
 N BULKHEAD DIRECT SOLDER JACK
 (FOR .141 SEMI RIGID CABLE)
 172137

UNLESS OTHERWISE SPECIFIED DIMENSIONS ARE IN MILLIMETERS. DIMENSIONS IN () ARE IN INCHES AND FOR CUSTOMER REFERENCE ONLY. TOLERANCES FOR MILLIMETERS ARE:
 0.5 - 8mm ± 0.20mm
 8 - 30mm ± 0.40mm
 30 - 120mm ± 0.50mm
 UNLESS OTHERWISE SPECIFIED TOLERANCES FOR INCHES ARE:
 .020 - .315 = ± 0.002"
 .315 - 1.180 = ± 0.015"
 1.180 - 4.724 = ± 0.020"

APPROVALS	DATE
DRAWN G.R.S.	12/09/03
CHECKED	
ISSUED	
SHEET 1 OF 1	

PART DESCRIPTION	PART NO.
N BULKHEAD DIRECT SOLDER JACK (FOR .141 SEMI RIGID CABLE)	172137