

4

3

2

1

THIS DRAWING IS UNPUBLISHED.

RELEASED FOR PUBLICATION

© COPYRIGHT

ALL RIGHTS RESERVED.

LOC DIST

REVISIONS

P	LTR	DESCRIPTION	DATE	DWN	APVD
	C1	ECR-13-005376	27MAR2013	XZ	LZ

REPLACED BY OCEAN STYLE APPLICATOR PART NUMBER 2151376-1

FOR REPLACEMENT PARTS FOR APPLICATOR 1528778
REFER TO ADDITIONAL PAGE(S). SPARE PARTS KIT (IF LISTED)
WILL REMAIN AVAILABLE.

THE REPLACEMENT OCEAN STYLE APPLICATOR HAS THE
SAME TERMINATOR/PRESS INTERFACE AS APPLICATOR
1528778

Dimensioning and tolerancing per ASME Y14.5M-2009


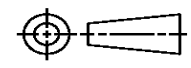
B

A

Dimensioning and tolerancing per ASME Y14.5M-2009

B

A

THIS DRAWING IS A CONTROLLED DOCUMENT.		DWN X. ZHAO	 TE Connectivity		
DIMENSIONS:		CHK L. ZHANG			
		APVD L. ZHANG	NAME		
TOLERANCES UNLESS OTHERWISE SPECIFIED:		PRODUCT SPEC	FINE ADJUST SIDE FEED HDI APPLICATOR		
0 PLC ±		APPLICATION SPEC	SIZE	CAGE CODE	DRAWING NO
1 PLC ±			A3		©-1528778
2 PLC ±					RESTRICTED TO
3 PLC ±					
4 PLC ±					
ANGLES ±					
MATERIAL	FINISH	WEIGHT			
				SCALE	SHEET 1 OF 2 REV C1

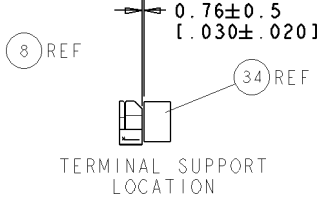
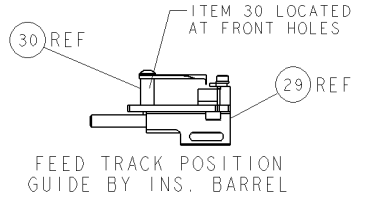
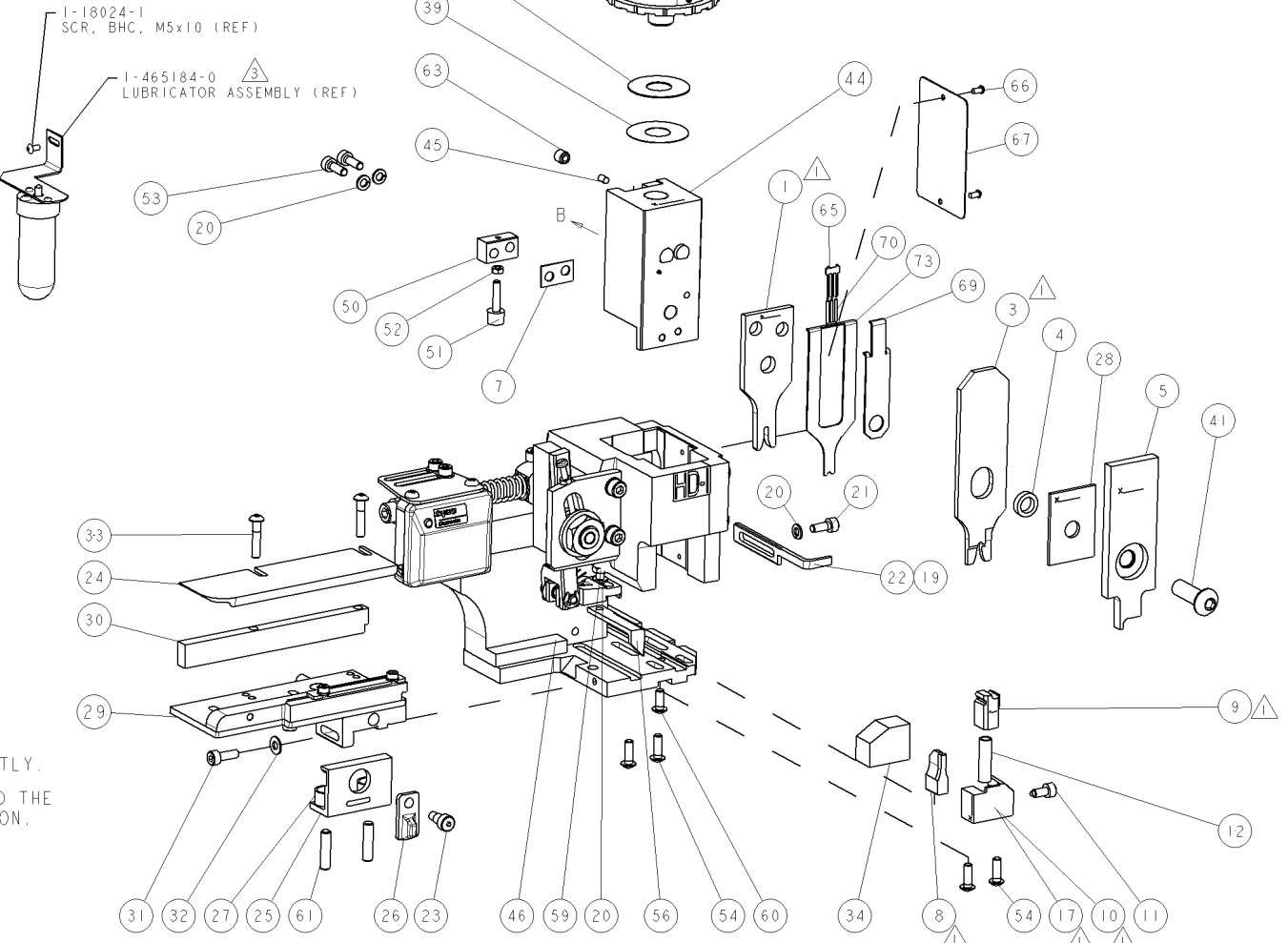
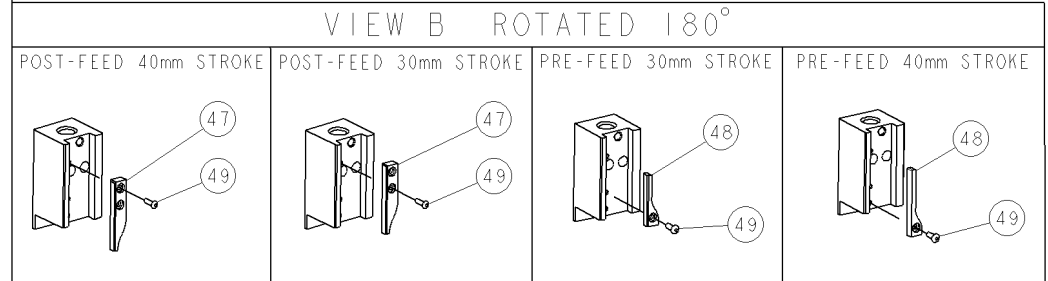
Dimensioning and tolerancing per ASME Y14.5M-2009

PART NUMBER	REV	TERMINATOR	FEED TYPE	DESCRIPTION
1528778-1	C	LEADMAKER	MECH POST FEED	CUTS CARRIER
1528778-2	C	BENCH	MECH PRE FEED	CUTS CARRIER
1528778-6	C	LEADMAKER	MECH POST FEED	CONTINUOUS CARRIER
7-1528778-1	C	LEADMAKER	MECH POST FEED	-1 AND SPARE PARTS
7-1528778-2	C	BENCH	MECH PRE FEED	-2 AND SPARE PARTS
7-1528778-6	C	LEADMAKER	MECH POST FEED	-6 AND SPARE PARTS
7-1528778-7	A	-	-	SPARE PARTS KIT

CRIMP DATA		TE TERMINAL		TE CRIMP SPECS	
TERMINAL NAME: CONTACT, AMPSEAL					
CRIMP	SIZE	TYPE	RANGE		
WIRE	2.03 [1.080 IN]	F	0.50-1.40mm ² or 20-16 AWG		
INSUL	3.05 [1.120 IN]	O	1.70-2.70 [1.067-1.106 IN]		
WIRE STRIP LENGTH 4.70-5.50 [1.185-2.16 IN]		APPL INSTRUCTIONS 408-8322 & 408-8490			
TERMINAL APPL SPEC	114-16016	FEED	10.50 [4.13 IN]		
TERMINALS APPLIED					
770520	-	-	-	-	-
WIRE SIZE	CRIMP HEIGHT	REF SETTINGS			
1.40mm ² or 16AWG	1.40 ± 0.05 [1.055 ± 0.02 IN]	B 7			
1.00mm ²	1.32 ± 0.05 [1.052 ± 0.02 IN]	C 3			
0.75mm ² or 0.80mm ²	1.27 ± 0.05 [1.050 ± 0.02 IN]	C 6			
18 AWG	1.27 ± 0.05 [1.050 ± 0.02 IN]	C 6			
0.50mm ² or 20AWG	1.17 ± 0.05 [1.046 ± 0.02 IN]	D 3			

- △ RECOMMENDED SPARE PARTS.
- 2. GREASE RAM, CAM, CAM FOLLOWER AND FEED ROD LIGHTLY.
- △ CERTAIN TERMINALS REQUIRE LUBRICATION. REFER TO THE APPLICATOR INSTRUCTION SHEET FOR MORE INFORMATION.
- 4. LUBRICATE DAILY PER THE APPLICATOR INSTRUCTION SHEET SUPPLIED WITH THE APPLICATOR.

*** WARNING**
ON INSTALLATION, SET WIRE DISC TO LARGEST WIRE SIZE SETTING. USE OF SETTINGS BELOW MIN. REQUIRED CRIMP HEIGHT SETTING WILL CAUSE DAMAGE TO CRIMP TOOLING.



SET UP GAGE
458637-3

REV		DESCRIPTION	DATE	BY	CHK
A		SEE ECO-07-009650	25APR2007	LJL	MC
B		ECR-08-017097	08JUL2008	MY	TE
C		ECR-10-010159	12MAY2010	KH	SX

REV	QTY	UNIT	DESCRIPTION	ITEM NO	
-	1	I	1490525-1	DEPRESSOR, WIRE	73
-	-	-	-	-	72
-	1	I	1338705-3	DOCUMENTATION PACKAGE	71
-	3	3	2-23147-2	SPRING, COMPRESSION	70
-	1	I	1490524-2	DEPRESSOR, SPACER	69
-	-	-	-	-	68
-	1	I	461264-5	PLATE, IDENTIFICATION	67
-	2	2	21017-2	SCREW, DRIVE	66
-	1	I	1424350-1	HOLDER, PIN, WIRED	65
-	-	-	-	-	64
-	1	I	3-18031-0	SCR, SET, CUP POINT M6 X 6.0	63
-	-	-	-	-	62
-	2	2	2-18032-5	SCR, SET, FLT POINT M5 X 20.0	61
-	1	I	18024-7	SCR, BTN SKT HD CAP (M4 X 10.0)	60
-	1	I	5-18022-2	SCR, HEX HD CAP M4 X 8.0	59
-	-	-	-	-	58
-	-	-	-	-	57
-	1	I	1338685-1	PAWL, FEED	56
-	-	-	-	-	55
-	4	4	18024-8	SCR, BTN SKT HD CAP (M4 X 12.0)	54
-	2	2	1-18023-2	SCR, SKT HD CAP M4 X 12.0	53
-	1	I	18030-1	NUT, HEX, REG M3	52
-	1	I	811242-5	BUMPER, HOLD DOWN	51
-	1	I	690753-2	SPACER, TONKER	50
-	1	I	18024-3	SCR, BTN SKT HD CAP (M3 X 10.0)	49
-	-	-	-	-	48
-	-	-	-	-	47
-	1	I	1320999-3	APPLICATOR SUBASSEMBLY, HD1	46
-	1	I	690191-1	PLUG, NYLON	45
-	1	I	1633724-1	RAM, (SIDE FEED)	44
-	-	-	-	-	43
-	-	-	-	-	42
-	1	I	2-18024-6	SCR, BTN SKT HD CAP (M8 X 25.0)	41
-	-	-	-	-	40
-	1	I	690125-1	SHIM SUB-ASSY	39
-	1	I	469367-9	SHIM	38
-	1	I	879103-3	FINE ADJUST HEAD ASSEMBLY	37
-	-	-	-	-	36
-	-	-	-	-	35
-	1	I	1320934-6	SUPPORT, TERMINAL	34
-	2	2	1-18024-0	SCR, BTN SKT HD CAP (M4 X 20.0)	33
-	1	I	18027-2	WASHER, FLAT, REG M4	32
-	1	I	1-18023-2	SCR, SKT HD CAP M4 X 12.0	31
-	1	I	1320908-1	SPACER, STRIP GUIDE	30
-	1	I	1633073-1	STRIP GUIDE ASSEMBLY	29
-	1	I	1-455888-6	SPACER, CRIMPER	28
-	2	2	1-22284-0	SPRING, COMPRESSION	27
-	1	I	356835-1	LEVER, DRAG RELEASE	26
-	1	I	240792-1	DRAG, TERMINAL	25
-	1	I	1320928-1	PLATE, STRIP GUIDE	24
-	1	I	980371-4	SCR, SKT HD SHLDR 5.0 DIA X 6.0	23
-	1	I	690472-2	STRIPPER	22
-	1	I	1-18023-1	SCR, SKT HD CAP M4 X 10.0	21
-	4	4	18025-2	WASHER, SPRG LOCK, REG M4	20
-	-	-	-	-	19
-	-	-	-	-	18
-	1	I	1338684-1	SHEAR HOLDER, FRONT	17
-	-	-	-	-	16
-	-	-	-	-	15
-	-	-	-	-	14
-	-	-	-	-	13
-	1	I	3-22280-3	SPRING, COMPRESSION	12
-	1	I	356885-4	STOP, SHEAR	11
-	1	I	1320921-1	SHEAR HOLDER, FRONT, CUT	10
-	1	I	462006-1	FLOATING SHEAR, FRONT	9
-	1	2	3-1333204-2	ANVIL, COMBINATION	8
-	1	I	1-240641-9	SPACER	7
-	-	-	-	-	6
-	1	I	3-455889-8	DEPRESSOR, SHEAR	5
-	1	I	238011-2	BLOCK, CRIMPER SPACER	4
-	1	2	1333282-4	CRIMPER, INSULATION	3
-	-	-	-	-	2
-	1	2	1-456405-3	CRIMPER, WIRE PREMIUM	1

REV	QTY	UNIT	DESCRIPTION	ITEM NO					
-	-	-	-	84					
-	-	-	-	83					
-	-	-	-	82					
-	-	-	-	81					
-	-	-	-	80					
-	-	-	-	79					
-	-	-	-	78					
-	-	-	-	77					
-	-	-	-	76					
-	-	-	-	75					
-	-	-	-	74					
-77	-76	-72	-71	-6	-2	-1	PART NO	DESCRIPTION	ITEM NO

DIMENSIONS: mm (IN)	TOLERANCES UNLESS OTHERWISE SPECIFIED: 0.1 PLC ± 0.2 PLC ± 0.5 PLC ± 1.0 PLC ± ANGLES:	DWG: L LOETHOUSE CHK: M CLIFFORD NAME: I SMAR2007 PRODUCT SPEC: FINE ADJUST SIDE FEED HD1 APPLICATOR APPLICATION SPEC: See Table WEIGHT: A CUSTOMER DRAWING:	Tyco Electronics Harrisburg, PA 17105-3608 DATE: 00779 DRAWING NO: 1528778 SCALE: 3:5 SHEET: 1 OF 1 REV: C
------------------------	---	--	--