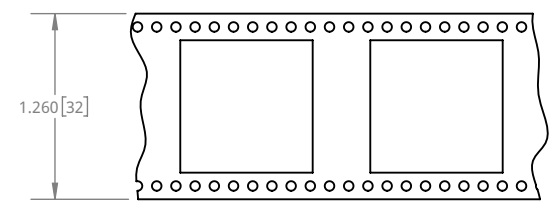
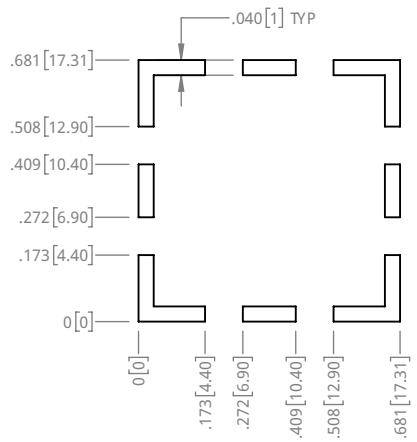
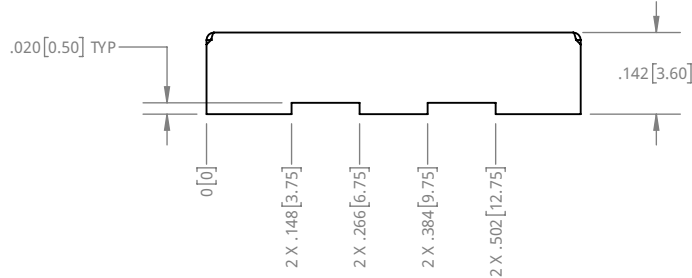
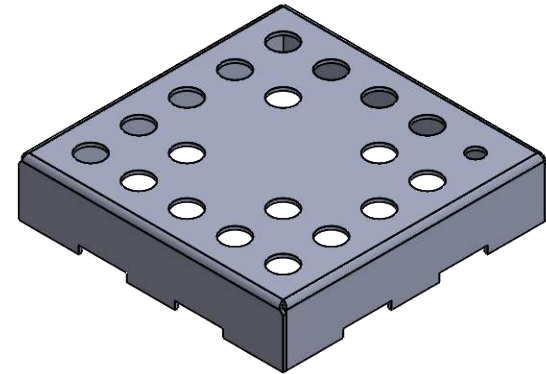
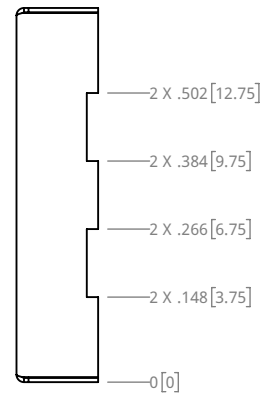
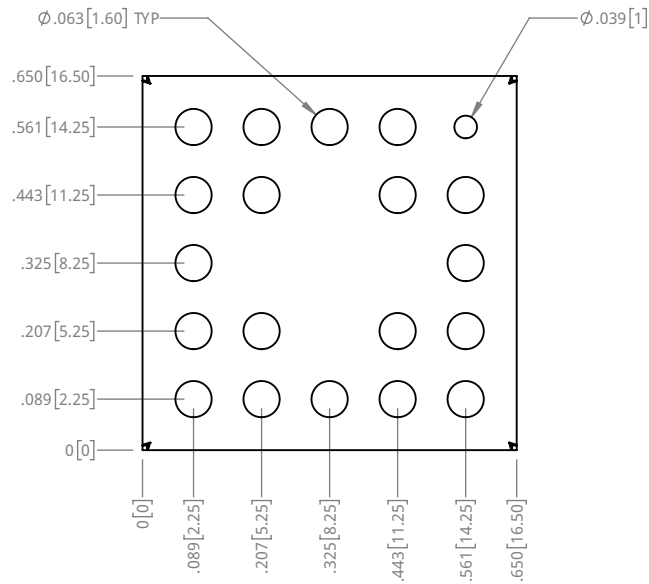


NOTES:

1. MATERIAL: 0.008" TIN PLATED STEEL PER ASTM A623/A624
2. PARTS PER REEL: 600



PROPRIETARY NOTICE: THESE DRAWINGS, LISTS OR SPECIFICATIONS ARE THE CONFIDENTIAL INFORMATION AND/OR TRADE SECRET OF 3G SHIELDING SPECIALTIES, P.C. AND USUALLY IN STRICT CONFIDENCE. PROPRIETARY RIGHTS ARE RESERVED BY 3G SHIELDING SPECIALTIES, P.C. IN THESE DRAWINGS, LISTS OR SPECIFICATIONS SHALL NOT BE REPRODUCED, TRANSMITTED, USED FOR THE PHYSICAL MANUFACTURE OR SALE OF EQUIPMENT OR USED FOR ANY OTHER PURPOSE WITHOUT THE WRITTEN PERMISSION OF 3G SHIELDING SPECIALTIES, P.C.

UNLESS OTHERWISE SPECIFIED  
U/M TO TOLERANCE  
INCHES ±0.005

DATE 15-12-10

ROHS COMPLIANCE  
2011/65/EU



PART NUMBER <b>PIC-S-102</b>	REV. <b>0</b>
DESCRIPTION <b>SHIELD CAN</b>	SCALE <b>3:1</b>
SHEET <b>1 OF 1</b>	