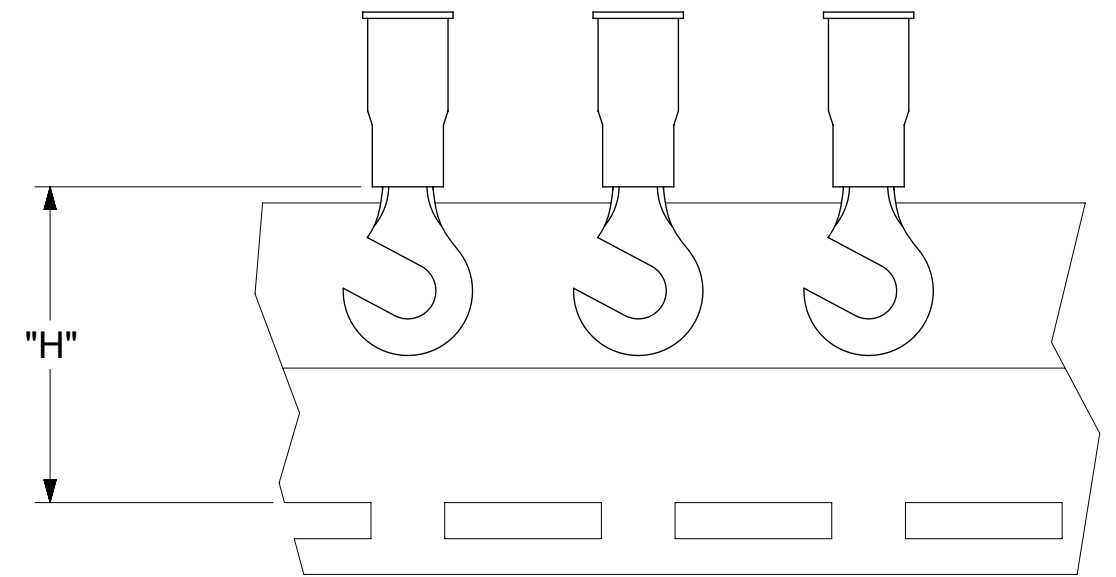
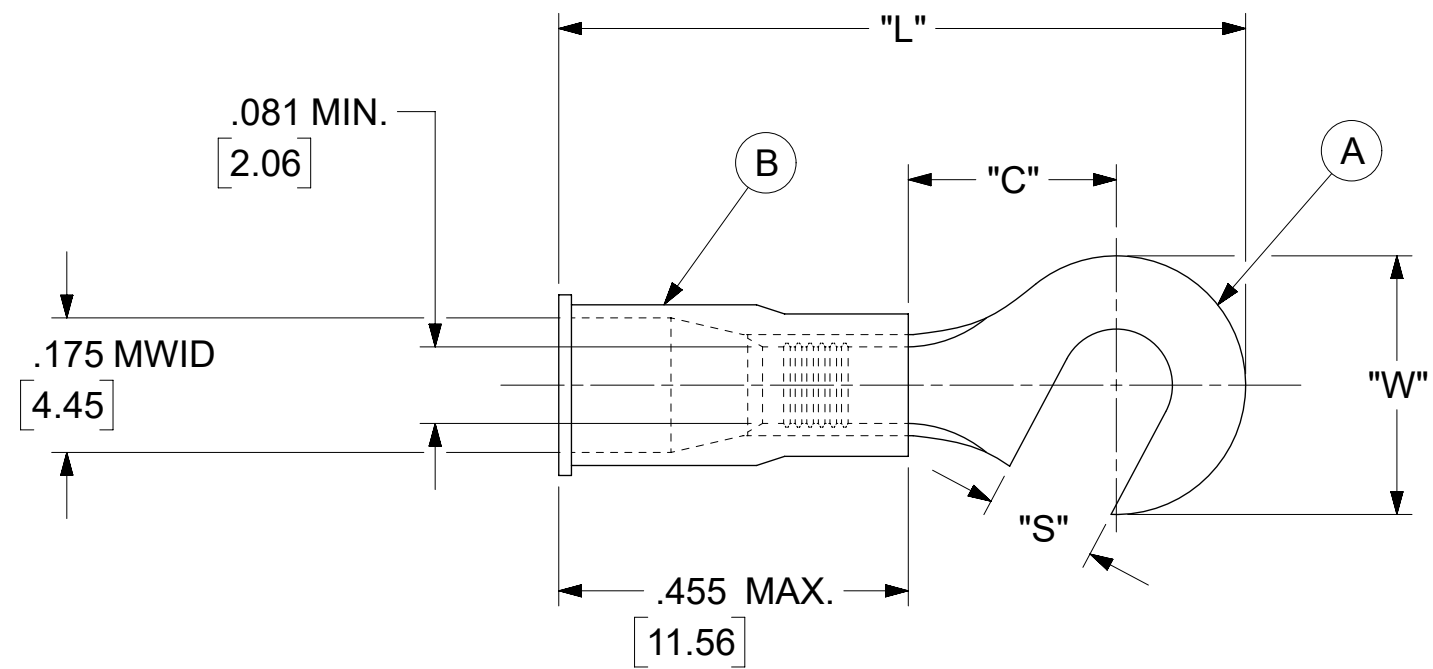


LOOSE PIECE		TAPE MOUNTED		SPECIFICATIONS					
MATERIAL NUMBER	ENGINEERING NUMBER	MATERIAL NUMBER	ENGINEERING NUMBER	STUD SIZE	"S" ±.005 [0.13]	"W" ±.010 [0.25]	"C" MIN.	"L" MAX.	"H"
191710007	B-219-06X	---	---	6	.146 [3.71]	.350 [8.89]	.271 [6.88]	.948 [24.08]	.980 [24.89]
191710009	B-219-08X	---	---	8	.173 [4.39]				
191710012	B-219-10X	---	---	10	.198 [5.03]				



NOTES:

- MATERIAL:
 - (A). TERMINAL: COPPER (.031±.001 [0.79] STOCK TKN.)
PLATING: ELECTRO-TIN (.0003 MIN.)
 - (B). INSULATION: MOLDED PVC (BLUE)
- MWID: MAXIMUM WIRE INSULATION DIAMETER
- WIRE SIZE: 16 -14 AWG
1.0 -2.5 MM²
- "UL" LISTING #E32244
"CSA" LISTING #18689
- ALL DIMENSIONS IN INCHES/[MM].
- PARTS ARE ROHS COMPLIANT.
- DIMS. SHOWN ARE FOR REFERENCE ONLY.

THIS DRAWING CONTAINS INFORMATION THAT IS PROPRIETARY TO MOLEX ELECTRONIC TECHNOLOGIES, LLC AND SHOULD NOT BE USED WITHOUT WRITTEN PERMISSION									
DIMENSION UNITS		SCALE		CURRENT REV DESC: OBSOLETE PART NUMBERS AS PER PCN#512131.				molex	
INCH/MM		NTS							
GENERAL TOLERANCES (UNLESS SPECIFIED)				EC NO: 727779				HOOK TONGUE TERMINAL INSULKRIMP 200-SERIES	
				DRWN: ANIKES1 2022/10/06					
4 PLACES ±				CHK'D: GGA 2022/11/29				PRODUCT CUSTOMER DRAWING	
3 PLACES ±				APPR: GGA 2022/11/29					
2 PLACES ± 0.13 ± 0.01				INITIAL REVISION:				DOCUMENT NUMBER	
1 PLACE ± 0.25 ±				DRWN: KO 1984/10/25				191710007	
0 PLACES ±				APPR: JMACNEIL 2019/07/10				PSD 000 A1	
ANGULAR TOL ± °				THIRD ANGLE PROJECTION		DRAWING		SERIES	
DRAFT WHERE APPLICABLE MUST REMAIN WITHIN DIMENSIONS				C-SIZE		19171		MATERIAL NUMBER	
				GENERAL MARKET		CUSTOMER		SHEET NUMBER	
								1 OF 1	