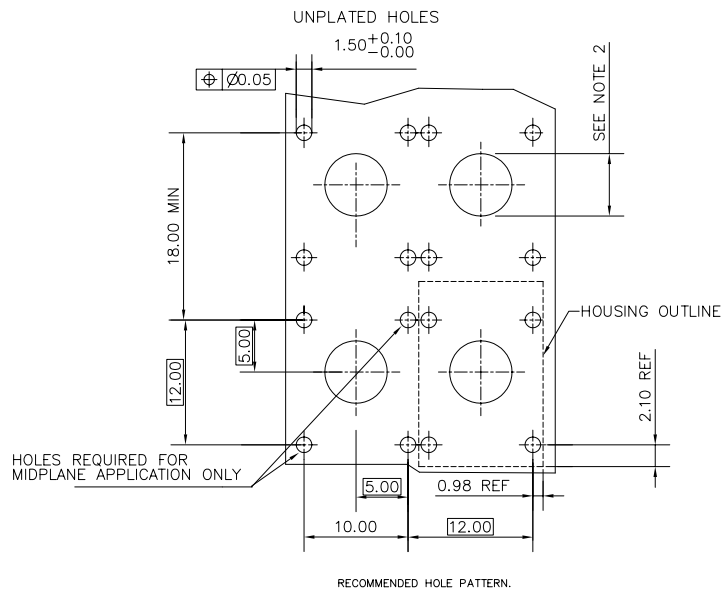
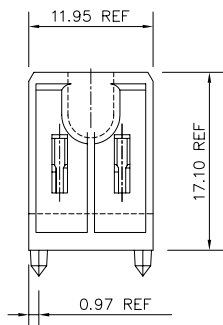
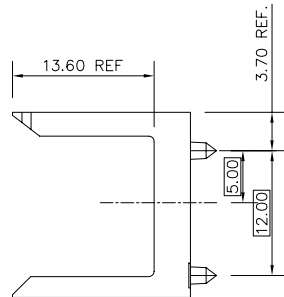
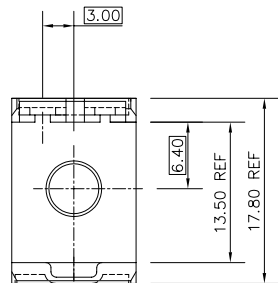


PRODUCT NUMBER
73475-101

NOTE 5



NOTES

- ① MATERIAL: LCP, 30% GLASS FILLED, FLAME RETARDANT ACC. TO UL 94-V0
COLOR: NATURAL
- ② - WHEN USED WITH GUIDE PIN, HOLE DIAMETER TO BE 3.25 ± 0.10 AND UNPLATED
- WHEN USED WITH STR. SCREW-TO-BOARD HIGH POWER INSERT, HOLE DIAMETER TO BE 3.25 ± 0.10 AND PLATED WITH 5.00 MIN. PAD DIAMETER.
- WHEN USED WITH A PLUG/PLUG HIGH POWER COUPLER OR A RECEPTACLE/RECEPTACLE COAX COUPLER, HOLE DIAMETER TO BE $6.00 + 0.10 / - 0.00$ AND UNPLATED.
3. MAX. FLASH 0.1MM
4. LEAST MATERIAL CONDITION ACC. TO ANSI Y14.5

- ⑤. ADD "LF" SUFFIX AT THE END OF PART NUMBER FOR LEAD FREE OPTION
6. THE HOUSING WILL WITHSTAND EXPOSURE TO 260°C PEAK TEMPERATURE FOR 15 SECONDS IN A WAVE SOLDER APPLICATION WITH A 1.5mm MINIMUM THICK CIRCUIT BOARD. SEE APPLICATION NOTES/PROCEDURES IF THEY ARE AVAILABLE.
7. THIS PRODUCT MEETS EUROPEAN UNION DIRECTIVES AND OTHER COUNTRY REGULATION AS DESCRIBED IN GS-22-008.

mat'l. code		surface		tolerance		projection		product family	
SEE NOTES		ISO 1302 ✓		ISO 406 ISO 1101		MM		METRAL (tm)	
ltr	ecn	no	dr	date		tolerances unless otherwise specified		title	
A	V70831	MDF	5/19/97	angles	linear	.0±.3 .00±.13 .000±.0051		HYBRID HEADER HOUSING-12MM	
B	V71431	MDF	10/2/97	0'±2'		scale 1:1		dwg no	
C	V00024	JWS	1/28/00					sheet 1 of 1 size	
D	M05-0200	MHT	9/21/05	dr	M.FETROW	5/19/97		73475	
E	M06-0277	MHT	7/22/06	engr	C.PENDLETON	5/17/97		A3	
				chr	C.PENDLETON	5/17/97		type	
				appd	C.PENDLETON	5/17/97		Product Customer Drawing	
sheet index	revision	E							
	sheet	1							



FCIconnect.com

Copyright FCI