

Customer Information Sheet

DRAWING No.: KF-440/4410006

SHEET 2 OF 2

IF IN DOUBT - ASK

©

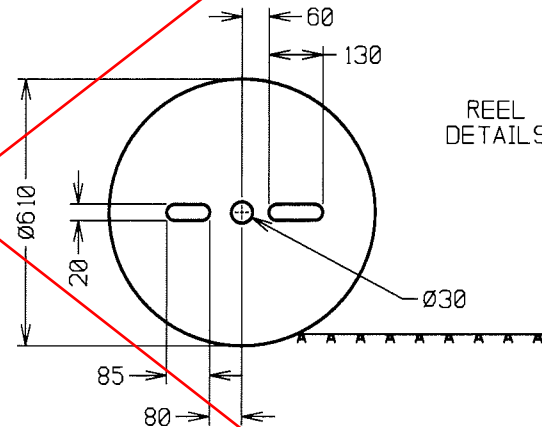
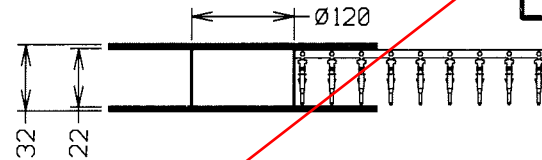
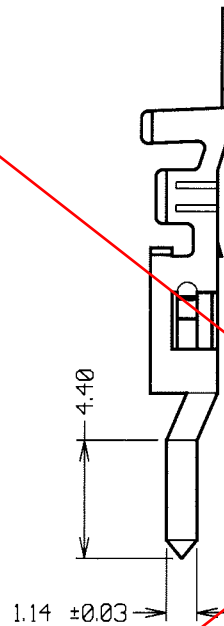
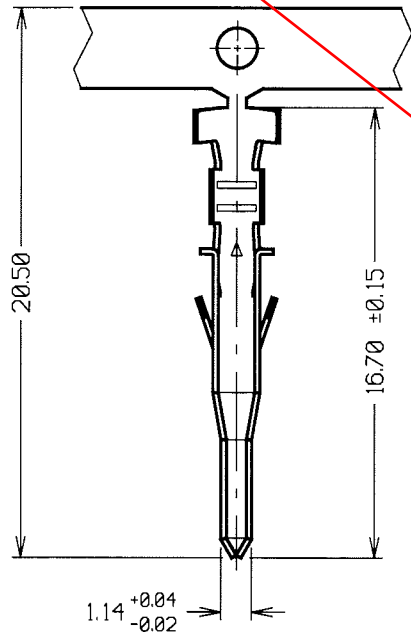
NOT TO SCALE

THIRD ANGLE PROJECTION

ALL DIMENSIONS IN mm

OBSOLETE

ORDER CODE:
KF-44X0006
SERIES CODE
(SEE TABLE)



REEL
DETAILS

HARWIN PART NUMBER	CRIMP PULL-OFF FORCE	WIRE SIZE
KF-4400006	88N MIN	16-20 AWG
KF-4410006	39N MIN	22-24 AWG

NOTES:

- FOR USE WITH CRIMP HOUSINGS KF-450XX00 AND KF-451XX00. RELEVANT SPECIFICATIONS ARE QUOTED ON THE CRIMP HOUSING DRAWING. FOR COMPLETE SPECIFICATION, SEE COMPONENT SPECIFICATION C033XX (LATEST ISSUE).
- QUANTITY PER REEL = 5,000. PITCH OF CONTACTS ON CARRIER = 11mm.

JAE	2	31.07.03	7537
NAME	ISS.	DATE	C/NOTE
APPROVED:			
CHECKED:			
DRAWN:		W. J. BOURNE	
CUSTOMER REF.:			
ASSEMBLY DRG:			

HARWIN

THIS DRAWING AND ANY INFORMATION OR DESCRIPTIVE MATTER SET OUT HEREON ARE CONFIDENTIAL AND COPYRIGHT PROPERTY OF THE HARWIN GROUP AND MUST NOT BE DISCLOSED, LOANED, COPIED OR USED FOR MANUFACTURING, TENDERING OR FOR ANY OTHER PURPOSE WITHOUT THEIR WRITTEN PERMISSION.

TOLERANCES
X. - ±1mm
X.X - ±0.25mm
X.XX - ±0.10mm
X.XXX - ±0.01mm
ANGLES - ±5°
UNLESS STATED

MATERIAL:
BRASS
FINISH: 0.5µ NICKEL, 2.0µ TIN
S/AREA: mm²

TITLE: POWERFIT®
4.2mm PITCH MALE
CRIMP CONTACT (REELED)
DRAWING NUMBER:
KF-440/4410006

HARWIN INC
U.S.A.
TEL: (812) 542 2546
FAX: (812) 542 2541

HARWIN PLC
U.K.
TEL: 023 9237 0451
FAX: 023 9231 4590

HARWIN PTE
SINGAPORE
TEL: 65 6779 4909
FAX: 65 6779 3868

SHT
2
OF
2

Customer Information Sheet

DRAWING No.: KF-4400046

SHEET 2 OF 2

IF IN DOUBT - ASK

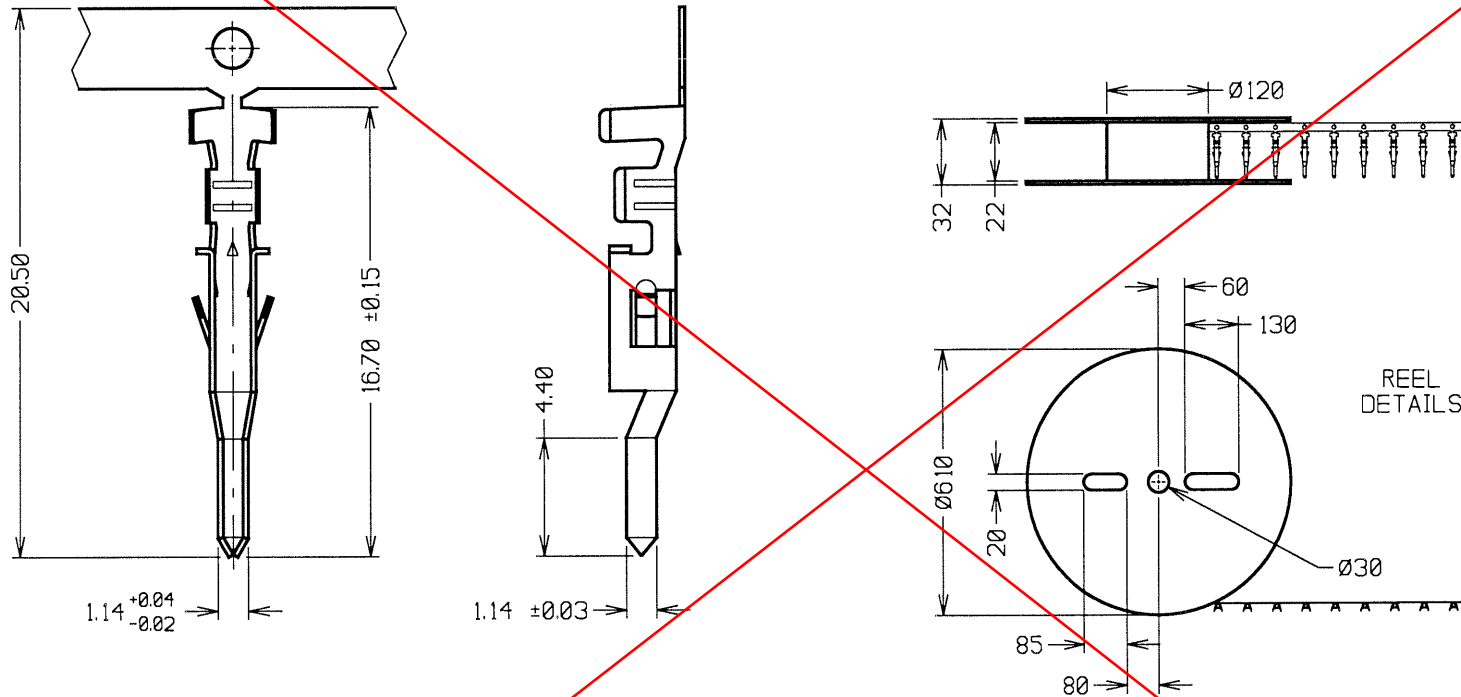
©

NOT TO SCALE

THIRD ANGLE PROJECTION

ALL DIMENSIONS IN mm

OBSOLETE



NOTES:

1. FOR USE WITH WIRE SIZE 16-20 AWG.
2. CRIMP PULL-OFF FORCE = 88N MIN.
3. USE WITH CRIMP HOUSING KF-4500200. FOR COMPLETE SPECIFICATION SEE COMPONENT SPEC. C033XX (LATEST ISSUE).
4. FINISH: 2.0µ 100% TIN OVER 0.5µ NICKEL.
5. QUANTITY PER REEL = 5,000. PITCH OF CONTACTS ON CARRIER = 11mm.

JMB	1	28.06.06	----
NAME	ISS.	DATE	C/NOTE
APPROVED: <i>[Signature]</i>			
CHECKED: <i>[Signature]</i>			
DRAWN: JM BROOKES			
CUSTOMER REF:			
ASSEMBLY DRG:			

HARWIN

HARWIN USA TEL: 603 893 5376 FAX: 603 893 5396 mis@harwin.com	HARWIN Europe (UK) TEL: 023 9231 4545 FAX: 023 9231 4590 mis@harwin.co.uk	HARWIN Asia TEL: +65 6 779 4909 FAX: +65 6 779 3868 mis@harwin.com.sg
--	--	--

THIS DRAWING AND ANY INFORMATION OR DESCRIPTIVE MATTER SET OUT HEREON ARE CONFIDENTIAL AND COPYRIGHT PROPERTY OF THE HARWIN GROUP AND MUST NOT BE DISCLOSED, LOANED, COPIED, OR USED FOR MANUFACTURING, TENDERING OR FOR ANY OTHER PURPOSE WITHOUT THEIR WRITTEN PERMISSION.

TOLERANCES
 X. - ±1mm
 X.X - ±0.25mm
 X.XX - ±0.10mm
 X.XXX - ±0.01mm
 ANGLES = ±5°
 UNLESS STATED

MATERIAL:
BRASS

FINISH: SEE NOTE 4

S/AREA: mm²

TITLE: POWERFIT®
4.2mm PITCH MALE
CRIMP CONTACT (REEL)

DRAWING NUMBER:
KF-4400046

SHT
2
OF
2