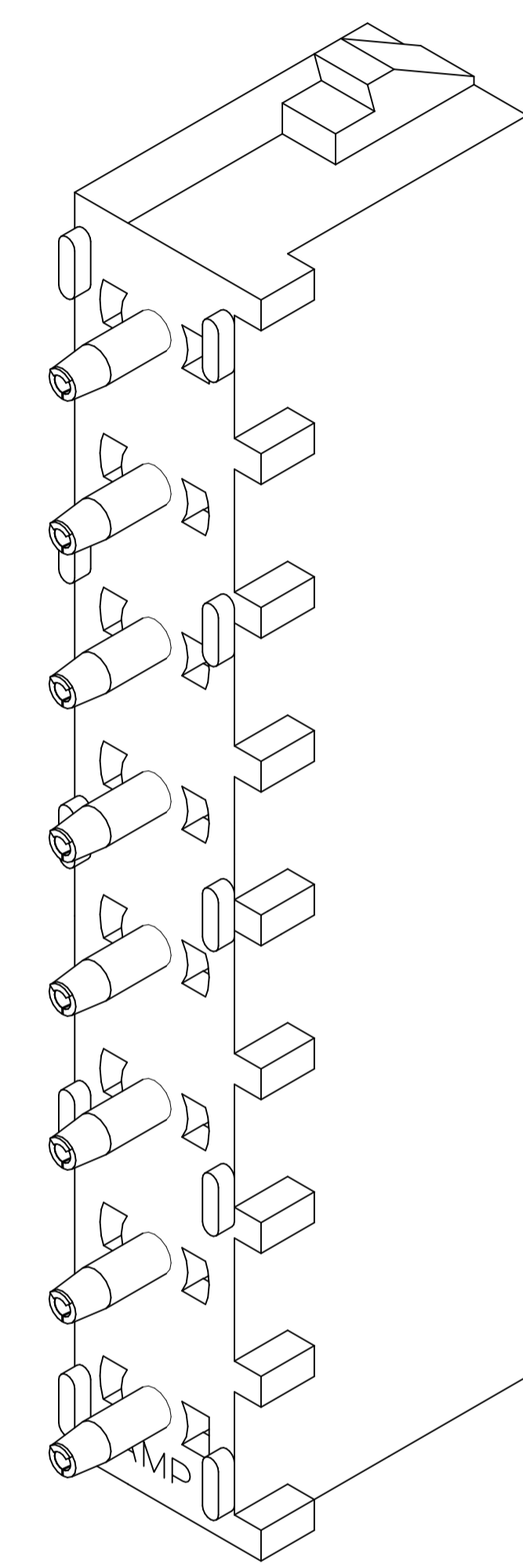
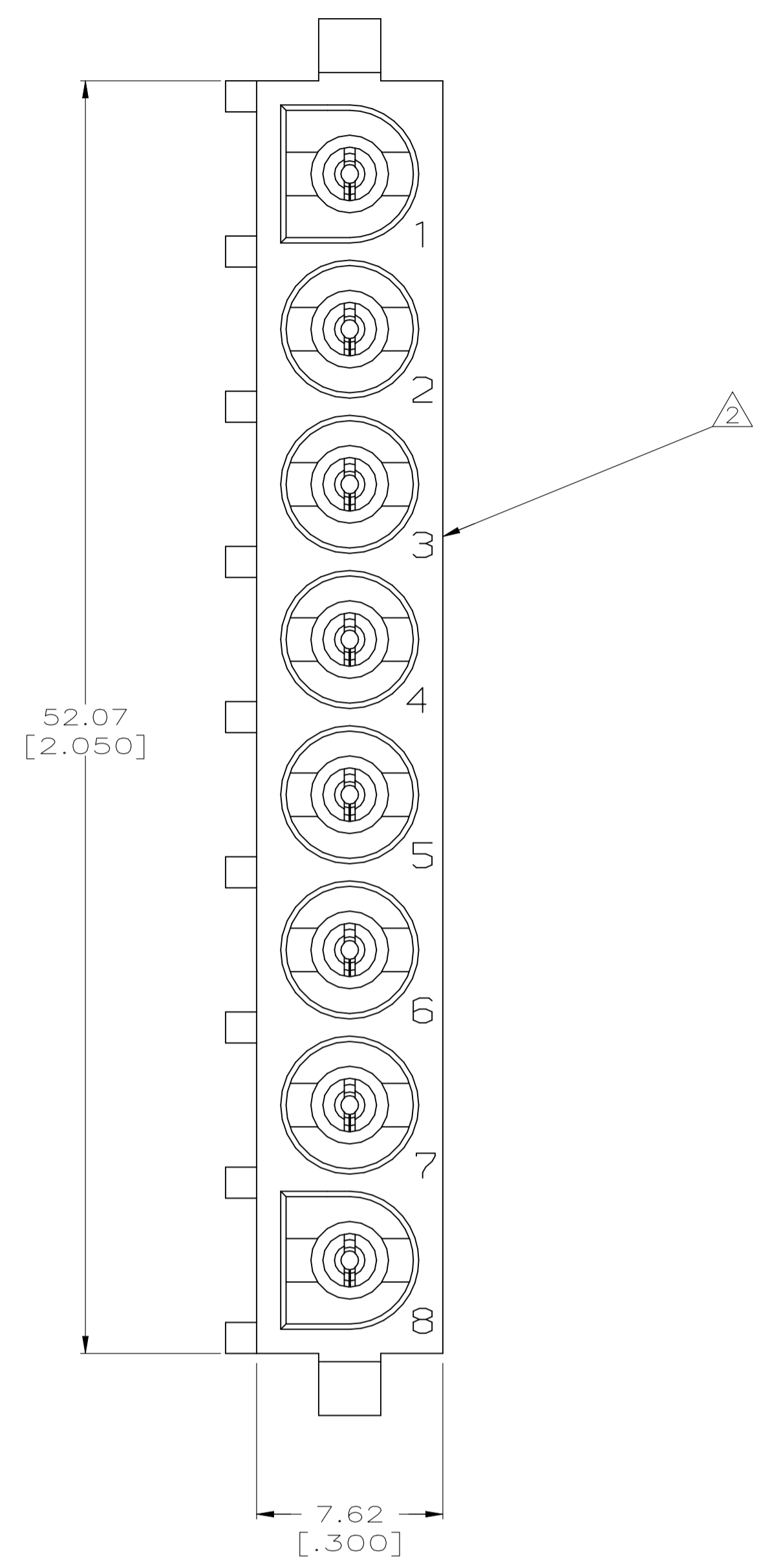
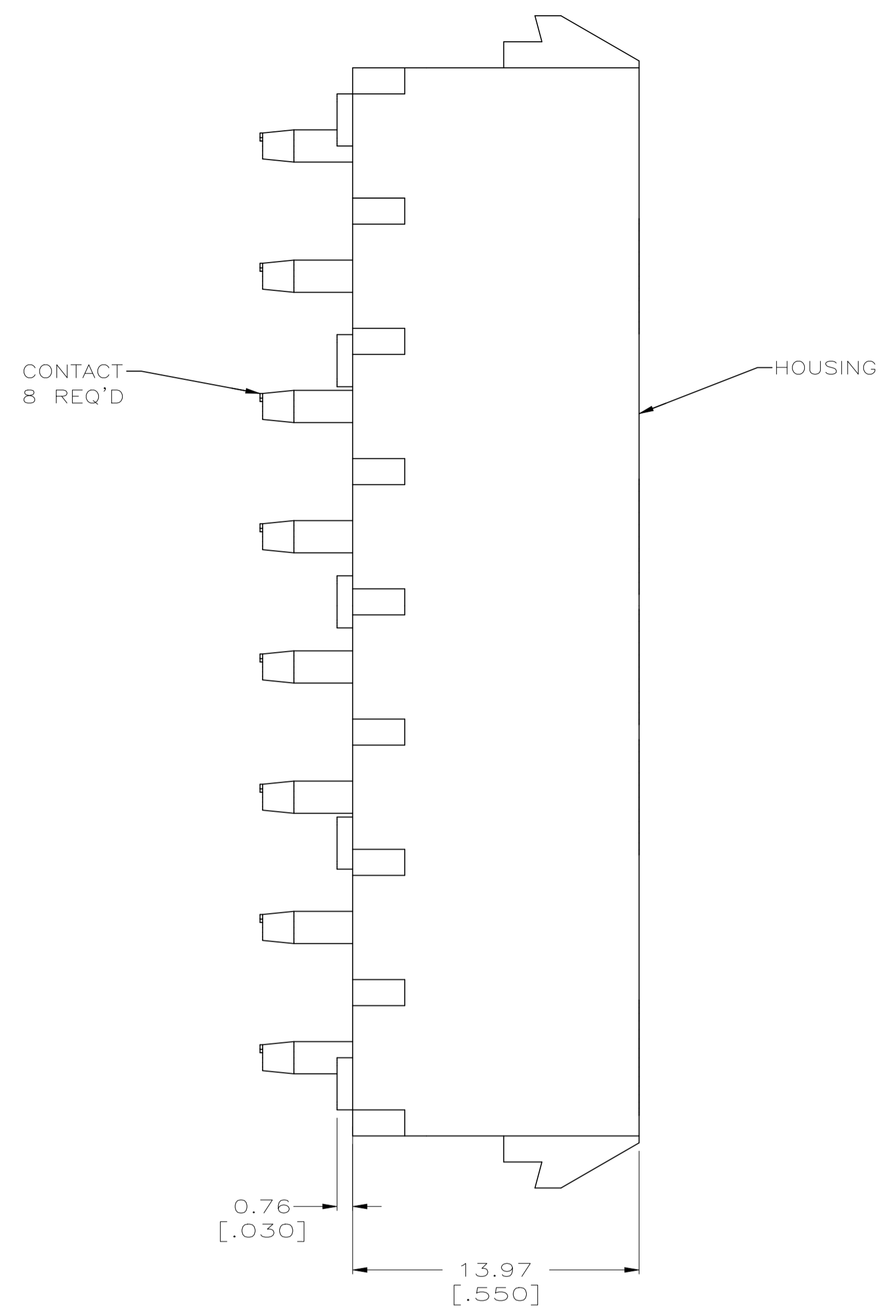
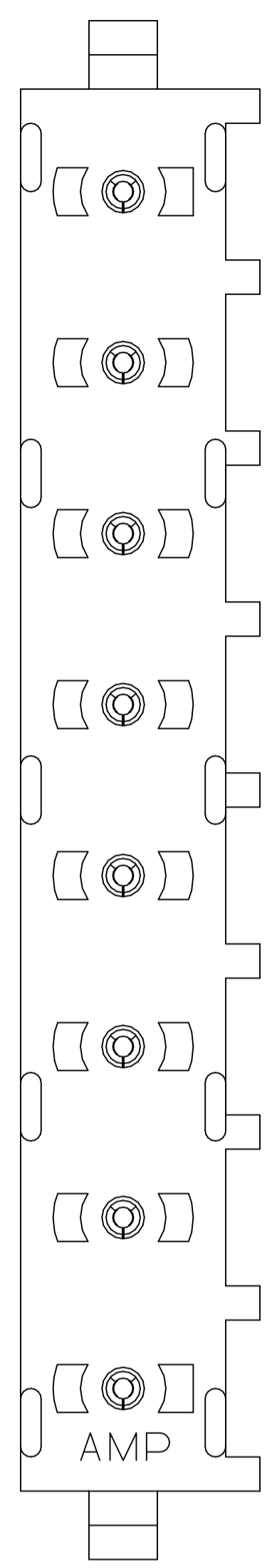
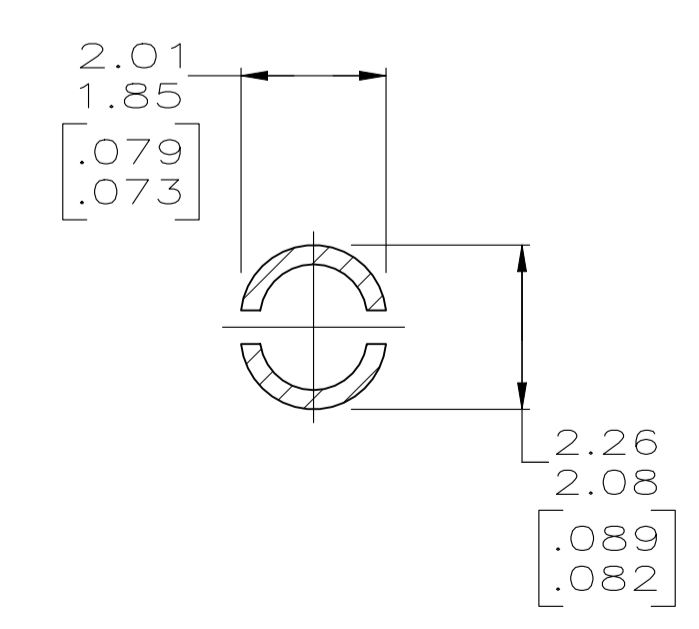
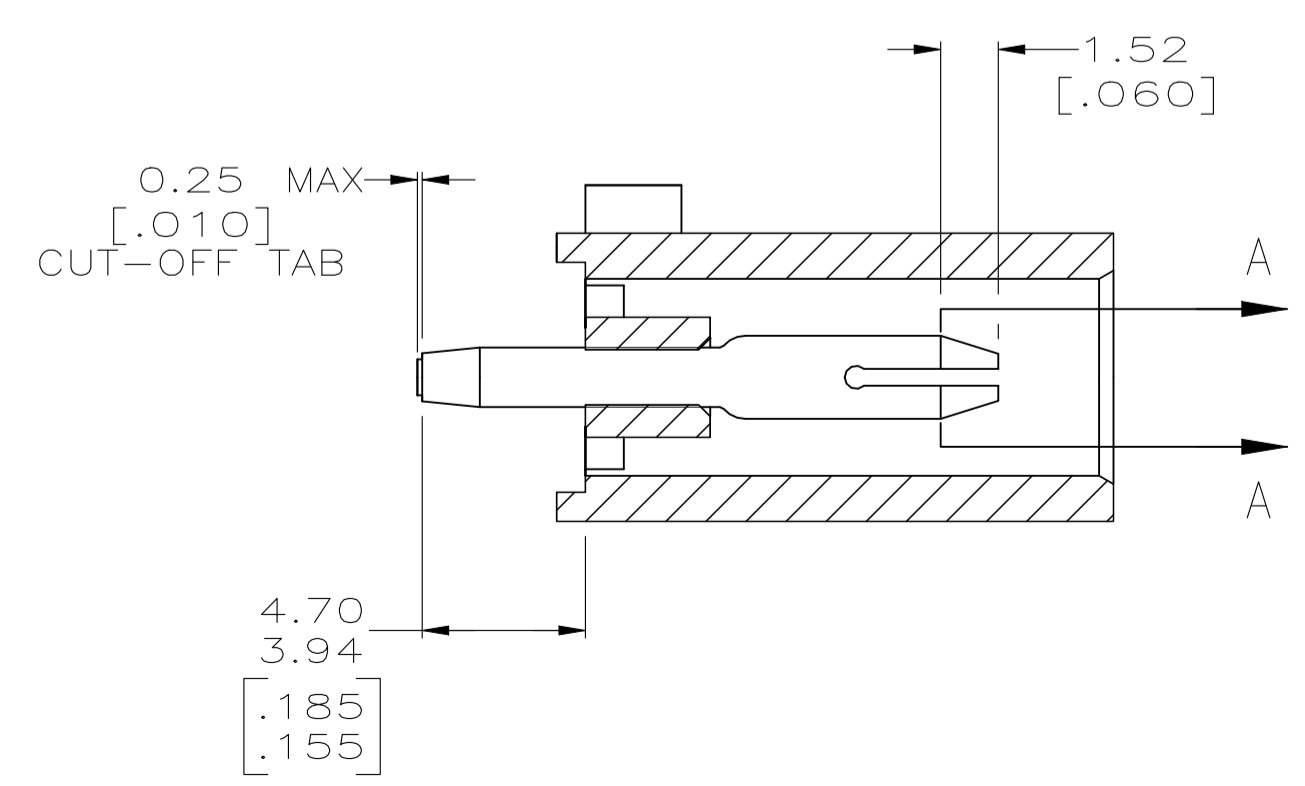


REVISIONS				
REV	DESCRIPTION	DATE	BY	APP'D
J3	REVISED PER ECR-21-118222	21JUL2022	JP	VS

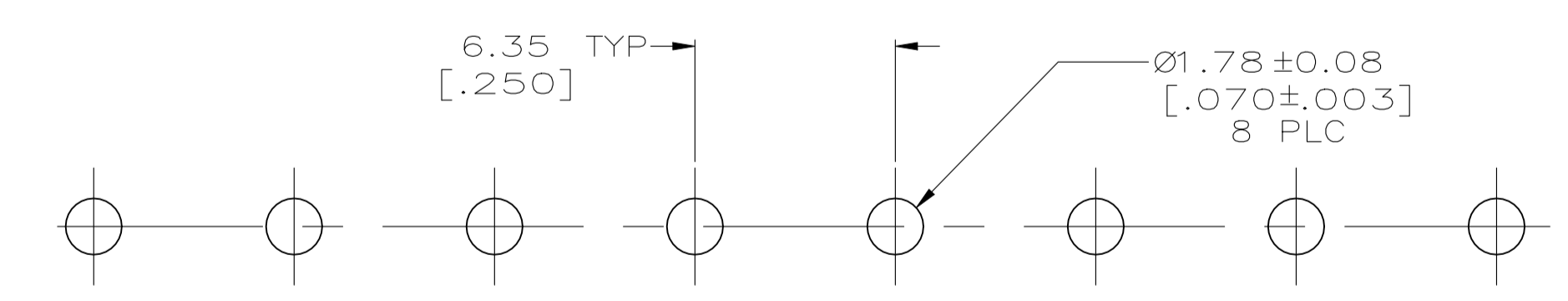
- PARTS COMPLY TO AMP SOLDERABILITY SPECIFICATION 109-11-3.
- CIRCUIT IDENTIFICATION CHARACTERS ARE ADJACENT TO THE INDICATED CAVITIES, BUT LOCATION AND ORIENTATION MAY DIFFER FROM PRINT.
- DIMENSIONS IN BRACKETS ARE IN INCHES.
- DIMENSIONS SHOWN REPRESENT PRODUCT IN DRY AS MOLDED CONDITION. ADDITIONAL 2% GROWTH DUE TO SUBSEQUENT MOISTURE ABSORPTION MAY OCCUR AND SHOULD BE ACCOUNTED FOR.



3-DIMENSIONAL MODEL NTS



SECTION A-A
SCALE 10:1



RECOMMENDED MOUNTING HOLE PATTERN FOR 1.57 [.062] THICK P.C. BOARD

PHOSPHOR BRONZE, PRE-TIN PIN CONTACT MATERIAL AND FINISH		NYLON,UL94V-2,NATURAL HOUSING MATERIAL		641825-1 PART NO	
THIS DRAWING IS A CONTROLLED DOCUMENT.		DIN 9130 LEWIS 10-05-98 CIRK 10-05-98 R SWING 10-05-98		TE Connectivity	
DIMENSIONS: mm [INCHES]		TOLERANCES UNLESS OTHERWISE SPECIFIED:		NAME: PIN HEADER ASSEMBLY, 8 CIRCUIT UNIVERSAL MATE-N-LOK™	
		0 PLC ± - 1 PLC ± - 2 PLC ± 0.13 [.005] 3 PLC ± - 4 PLC ± - ANGLES ± #°10'		APPLICATION SPEC	
MATERIAL SEE TABLE		FINISH SEE TABLE		SIZE: A1 CAGE CODE: 00779 DRAWING NO: 641825	
				RESTRICTED TO: CUSTOMER DRAWING	
				SCALE: 5:1 SHEET: 1 of 1 REV: J3	

