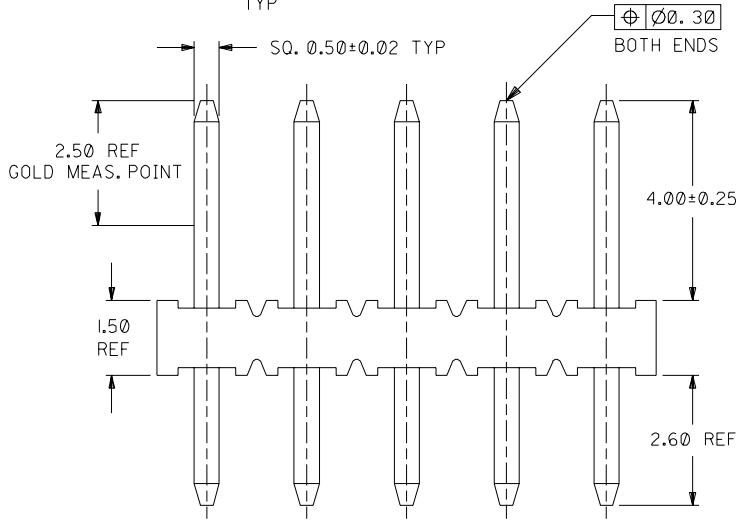
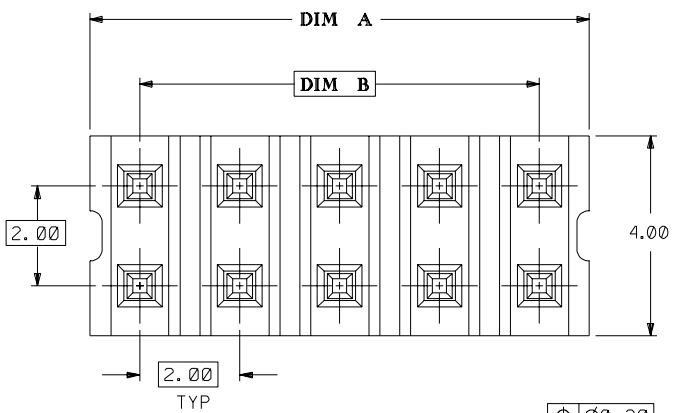


DWG. NO. SD\_87089-\*\*-\*\*16

CAD FILE SS8708916.DGN

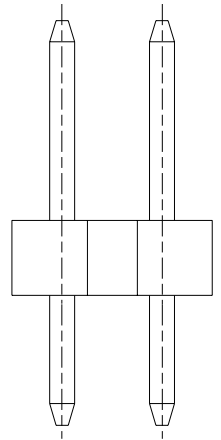
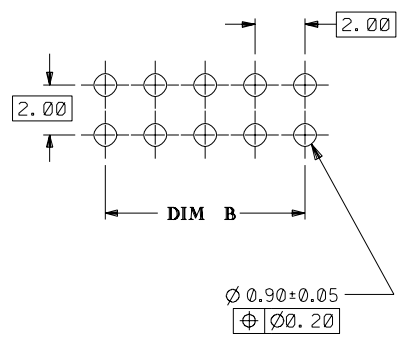
DO NOT SCALE DRAWING



**PART NUMBER LEGEND**

87089 - \* \* \* \*  
 CKT SIZE      PLATING  
 16 (SEE NOTE 4)  
 17

**RECOMMENDED PCB PATTERN**  
 (SCALE 5:1)



**NOTES:**

- ▽ 4 & 6 CKT SIZE ARE MADE BY BREAKING ASSEMBLY P/N 87089-081\* AND P/N 87089-121\* INTO HALVES RESPECTIVELY. BREAK-AWAY PROFILES ARE EXPECTED TO BE IRREGULAR.
- ▽ 2 CKT SIZE ARE MADE BY BREAKING LARGER ASSEMBLY P/N, THE CUT PROFILES ARE IRREGULAR AND UNDEFINED.
- 3. 10 CIRCUIT SIZE SHOWN FOR ILLUSTRATION ONLY. SEE CHART FOR AVAILABLE PART SIZES.
- 4. PLATING FINISH :  
 16 - 0.38um/15uin MIN. GOLD SELECTIVE AREA  
 1.90um/75uin MIN. TIN/LEAD IN SELECTED AREA OVER  
 1.27um/50uin MIN. NICKEL OVERALL  
 17 - 0.76um/30uin MIN. GOLD SELECTIVE AREA  
 1.90um/75uin MIN. TIN/LEAD IN SELECTED AREA OVER  
 1.27um/50uin MIN. NICKEL OVERALL
- 5. PRODUCT SPECIFICATION PS-87049 APPLIES
- 6. RECOMMENDED PC BOARD THICKNESS IS 1.60 ± 0.10mm. mm

PART NO.	CKT SIZE	DIM A	DIM B
87089-02**	2	NA	NA
87089-04**	4	3.90	2.00
87089-06**	6	5.90	4.00
87089-08**	8	7.90	6.00
87089-10**	10	9.90	8.00
87089-12**	12	11.90	10.00
87089-14**	14	13.90	12.00
87089-16**	16	15.90	14.00
87089-18**	18	17.90	16.00
87089-20**	20	19.90	18.00
87089-22**	22	21.90	20.00
87089-24**	24	23.90	22.00
87089-26**	26	25.90	24.00
87089-28**	28	27.90	26.00
87089-30**	30	29.90	28.00
87089-32**	32	31.90	30.00
87089-34**	34	33.90	32.00
87089-36**	36	35.90	34.00
87089-38**	38	37.90	36.00
87089-40**	40	39.90	38.00
87089-42**	42	41.90	40.00
87089-44**	44	43.90	42.00
87089-46**	46	45.90	44.00
87089-48**	48	47.90	46.00
87089-50**	50	49.90	48.00

SHT	1	2
REV	E3	E3

				MATERIAL : 30% G.F. NYLON 46, 94V-0 ,COLOR-BLACK		<b>MOLEX SINGAPORE PTE LTD</b> SHEET 1 OF 2	
				PIN: 0.50mm SQ. PHOSPHOR BRONZE 510			
E3 ADD T/R OPT. (SHT 2) AS PER 97-01-0142 FOR MOLEX INC.				S70422	SEE	970224	GENERAL TOLERANCES ± 0.20/0.008 DWG. NO.: SD187089-**-16 TITLE : "MILLI-GRID" 2mm DUAL ROW VERTICAL HEADER
E2 ADD 2 CKT SIZE				S60168	SEE GMS 950929	SEE NOTE 3	
E1 REVISED HOUSING MAT'L				S40030	JACK LING 930814		
LTR REVISION RECORD				ECN	DR	DATE	DRAWN BY SUSAN KOH 890801 APPR'D BY R. WONG 890803
<b>REVISE ONLY ON CAD SYSTEM</b>				CHK'D BY J. KACHLIC 890802 SCALE 10 : 1			

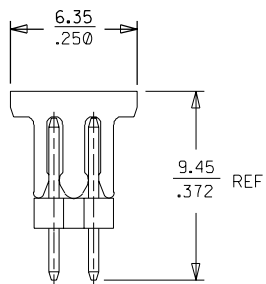
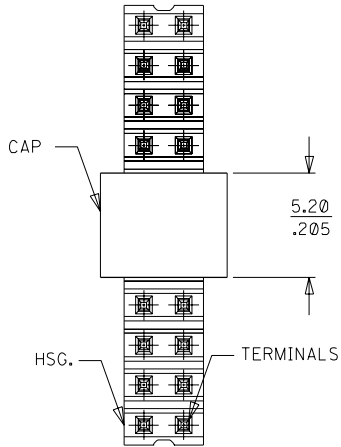
DWG. NO. SD187089-\*\*\*16

CAD FILE S08916B.DGN

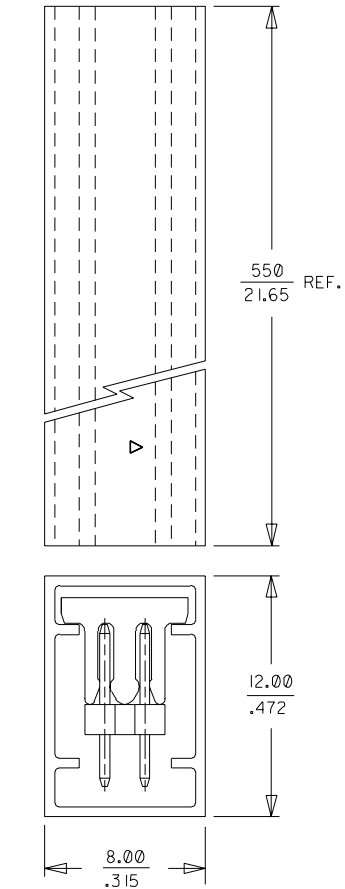
▽

DO NOT SCALE DRAWING

**PART WITH CAP**  
**(22 CKT SHOWN)**  
(SCALE 4:1)

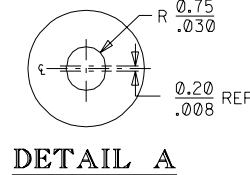
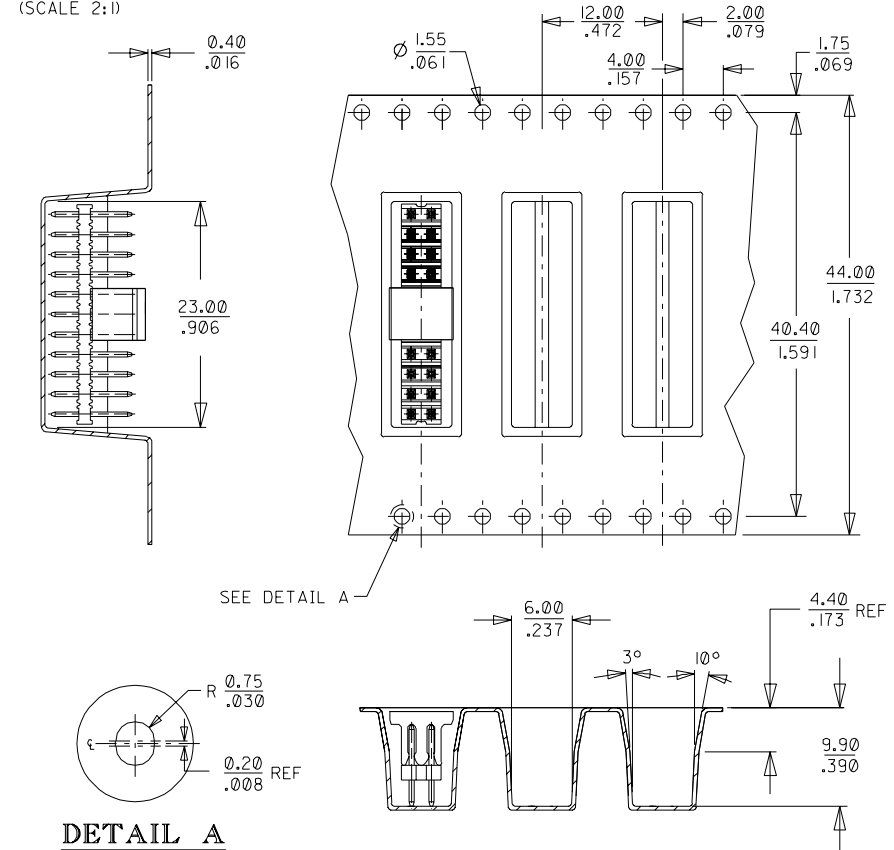


**WITH CAP IN TUBE**  
**(22 CKT SHOWN**  
**FOR MOLEX INC.)**  
(SCALE 4:1)



**PART NO.**  
WITH CAP IN TUBE  
87089-5126

**EMBOSSED CARRIER TAPE 'A'**  
**(22 CKT SHOWN, FOR MOLEX INC.)**  
(SCALE 2:1)



**PART NO.**  
WITH CAP IN TAPE/REEL  
87089-5111

				MATERIAL : 30% G.F. NYLON 46, 94V-0 ,COLOR-BLACK		<b>MOLEX SINGAPORE</b> <b>PTE LTD</b> SHEET 2 OF 2	
				FINISH : SEE NOTE 3			
E3 ADD T/R OPT. (SHT 2) AS PER 97-01-0142 FOR MOLEX INC.				ECN S70422	DATE 970224	GENERAL TOLERANCES ± 0.20 / .008 DWG. NO. SD187089-***16 REV E3	
LTR	REVISION RECORD	ECN	DR	CHK	DATE	DRAWN BY SUSAN KOH 890801	CHK'D BY J. KACHLIC 890802
REVISE ONLY ON CAD SYSTEM						APPR'D BY R. WONG 890803	SCALE 2 : 2
						TITLE : "MILLI-GRID" 2mm DUAL ROW VERTICAL HEADER	