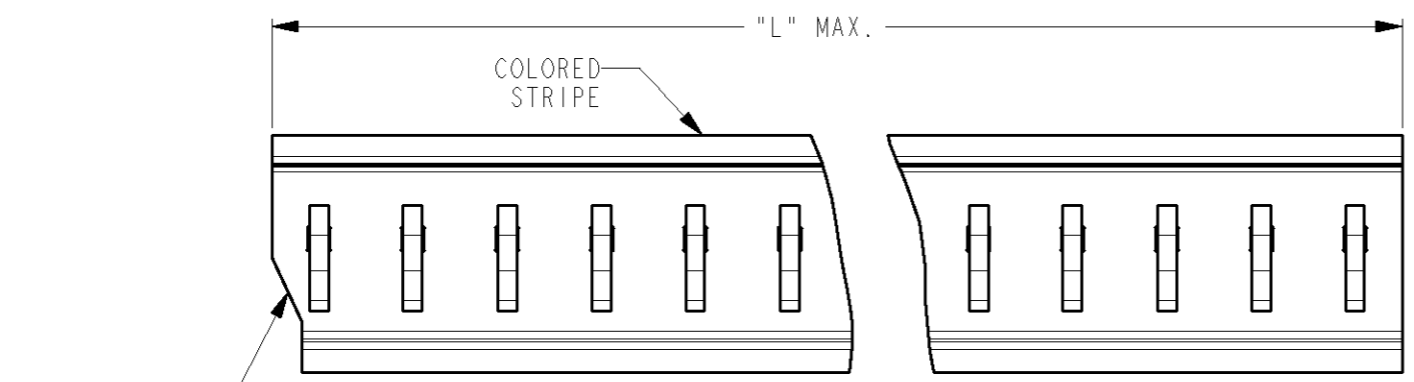
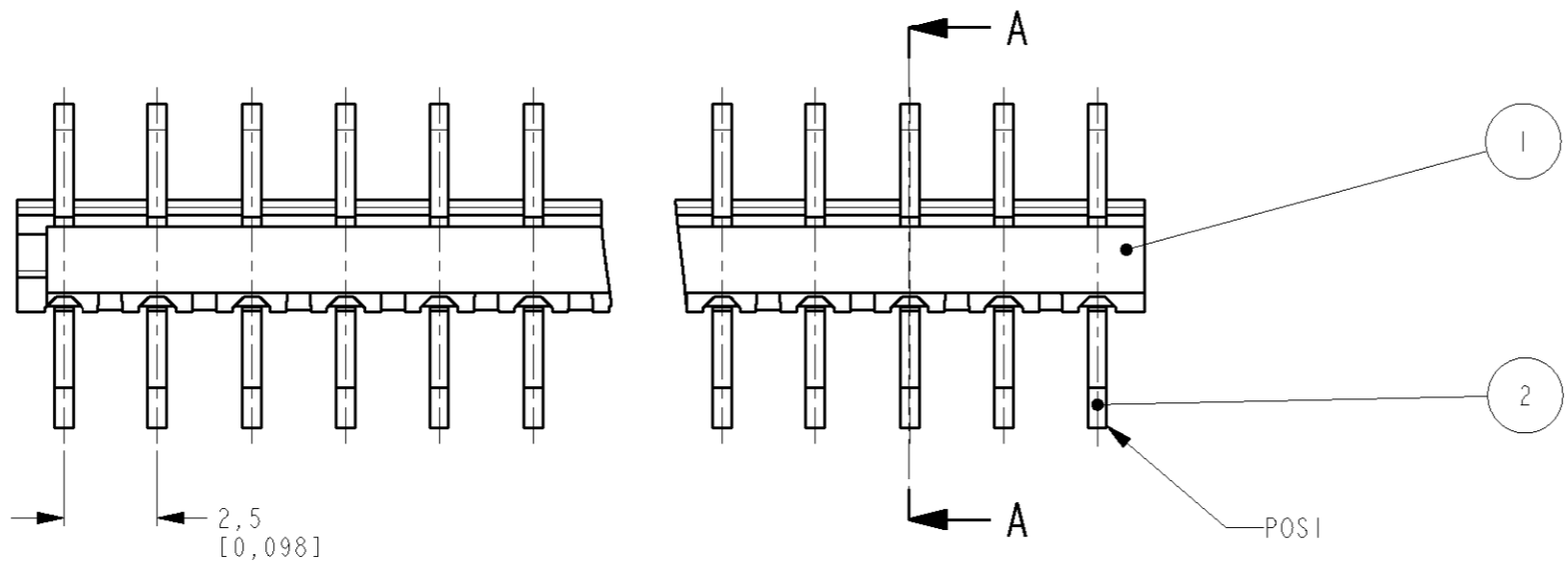


THIS DRAWING IS UNPUBLISHED. RELEASED FOR PUBLICATION
 © COPYRIGHT - BY TYCO ELECTRONICS CORPORATION. ALL RIGHTS RESERVED.

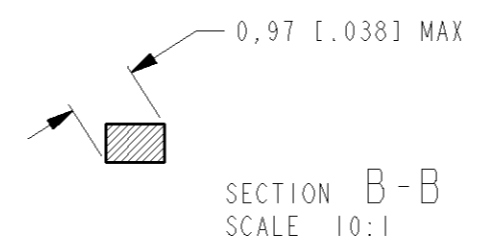
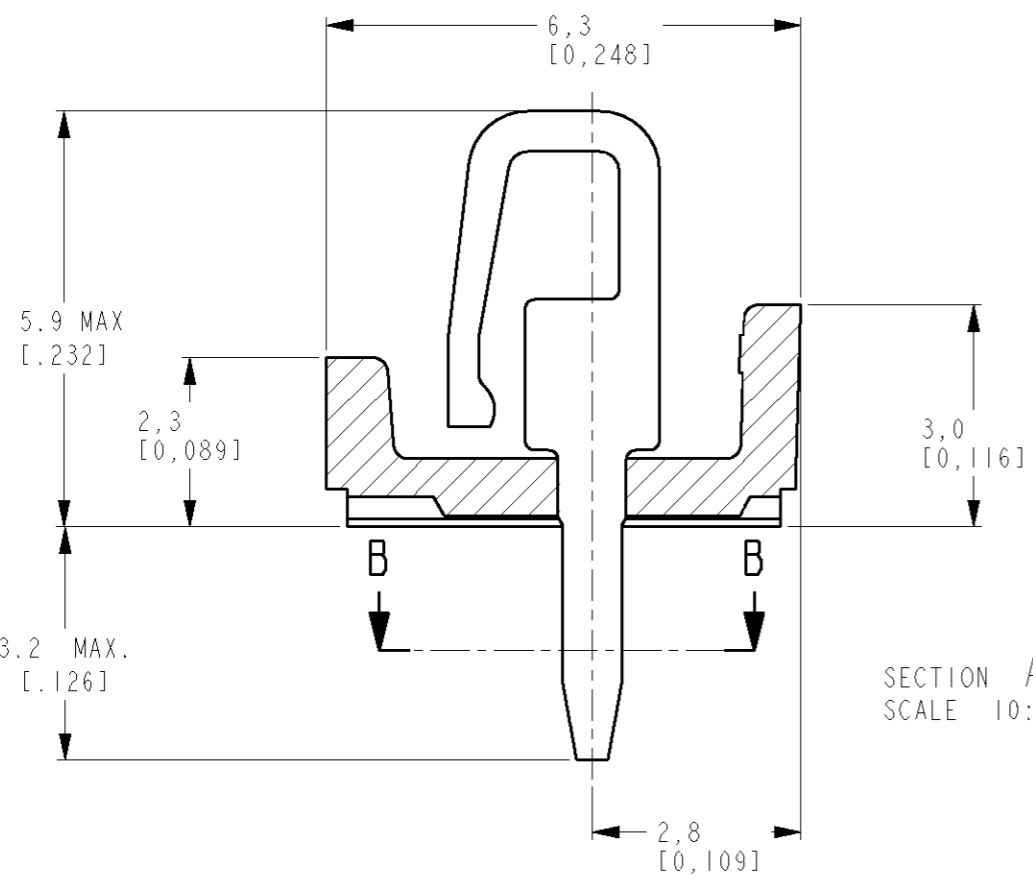
| LOC | DIST | REVISIONS | | | | | |
|-----|------|-----------|-----|------------------|-----------|-----|------|
| H | - | P | LTR | DESCRIPTION | DATE | DWN | APVD |
| | | | A | ECN EH10 0344 05 | 09 MAR 05 | MG | MG |



OPTIONAL



| PARTNUMBER | POS | "L" MAX | |
|-------------|-----|---------|-------|
| | | MM | INCH |
| 0-5161500-3 | 3 | 7.5 | .295 |
| 0-5161500-4 | 4 | 10.0 | .394 |
| 0-5161500-5 | 5 | 12.5 | .492 |
| 0-5161500-6 | 6 | 15.0 | .591 |
| 0-5161500-7 | 7 | 17.5 | .689 |
| 0-5161500-8 | 8 | 20.0 | .787 |
| 0-5161500-9 | 9 | 22.5 | .886 |
| 1-5161500-0 | 10 | 25.0 | .984 |
| 1-5161500-1 | 11 | 27.5 | 1.083 |
| 1-5161500-2 | 12 | 30.0 | 1.181 |
| 1-5161500-3 | 13 | 32.5 | 1.280 |
| 1-5161500-4 | 14 | 35.0 | 1.378 |
| 1-5161500-5 | 15 | 37.5 | 1.476 |
| 1-5161500-6 | 16 | 40.0 | 1.575 |
| 1-5161500-7 | 17 | 42.5 | 1.673 |
| 1-5161500-8 | 18 | 45.0 | 1.772 |
| 1-5161500-9 | 19 | 47.5 | 1.870 |
| 2-5161500-0 | 20 | 50.0 | 1.969 |



THIS DRAWING IS A CONTROLLED DOCUMENT FOR TYCO ELECTRONICS CORPORATION
 IT IS SUBJECT TO CHANGE AND THE CONTROLLING ENGINEERING ORGANIZATION
 SHOULD BE CONTACTED FOR THE LATEST REVISION.

| | |
|--------------------------|--|
| DIMENSIONS: mm (inch) | TOLERANCES UNLESS OTHERWISE SPECIFIED: |
| | 0 PLC ± |
| | 1 PLC ± |
| | 2 PLC ± |
| | 3 PLC ± |
| | 4 PLC ± |
| | ANGLES ± |
| MATERIAL - | FINISH - |

| | | | |
|---------------------------|---|---|-----------------|
| 2 | CONTACT | PHOSPHORBRONZE | TIN OVER NICKEL |
| 1 | HOUSING | PBT 20% GF, COLOR GREEN | |
| ITEM NO. | DESCRIPTION | MATERIAL | FINISH |
| DWN M. GOSSELINK | 09 MAR 05 | tyco TYCO ELECTRONICS NEDERLAND B.V. | |
| CHK M. GOSSELINK | - | 's-HERTOGENBOSCH, THE NETHERLANDS | |
| APVD F. IJLJENS | - | NAME | |
| PRODUCT SPEC 108-19027 | MINI-MATCH CONNECTOR ASS'Y 3-20 POS 2.5 MM PITCH | | |
| APPLICATION SPEC | SIZE | CAGE CODE | DRAWING NO |
| WEIGHT - | A3 | 00779 | C=5161500 |
| CUSTOMER DRAWING | SCALE 5:1 | SHEET 1 | OF 1 |
| | | REV A | |