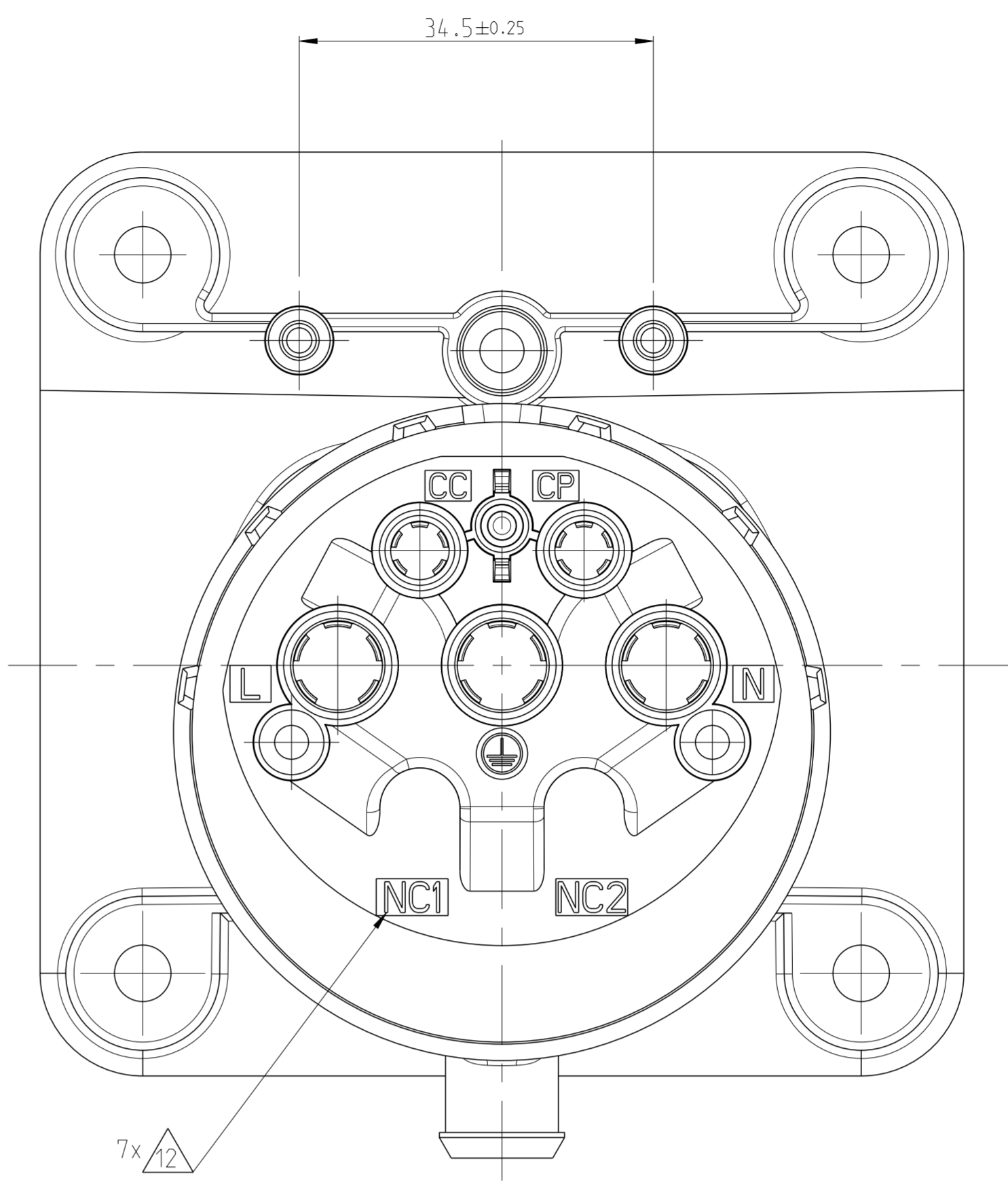
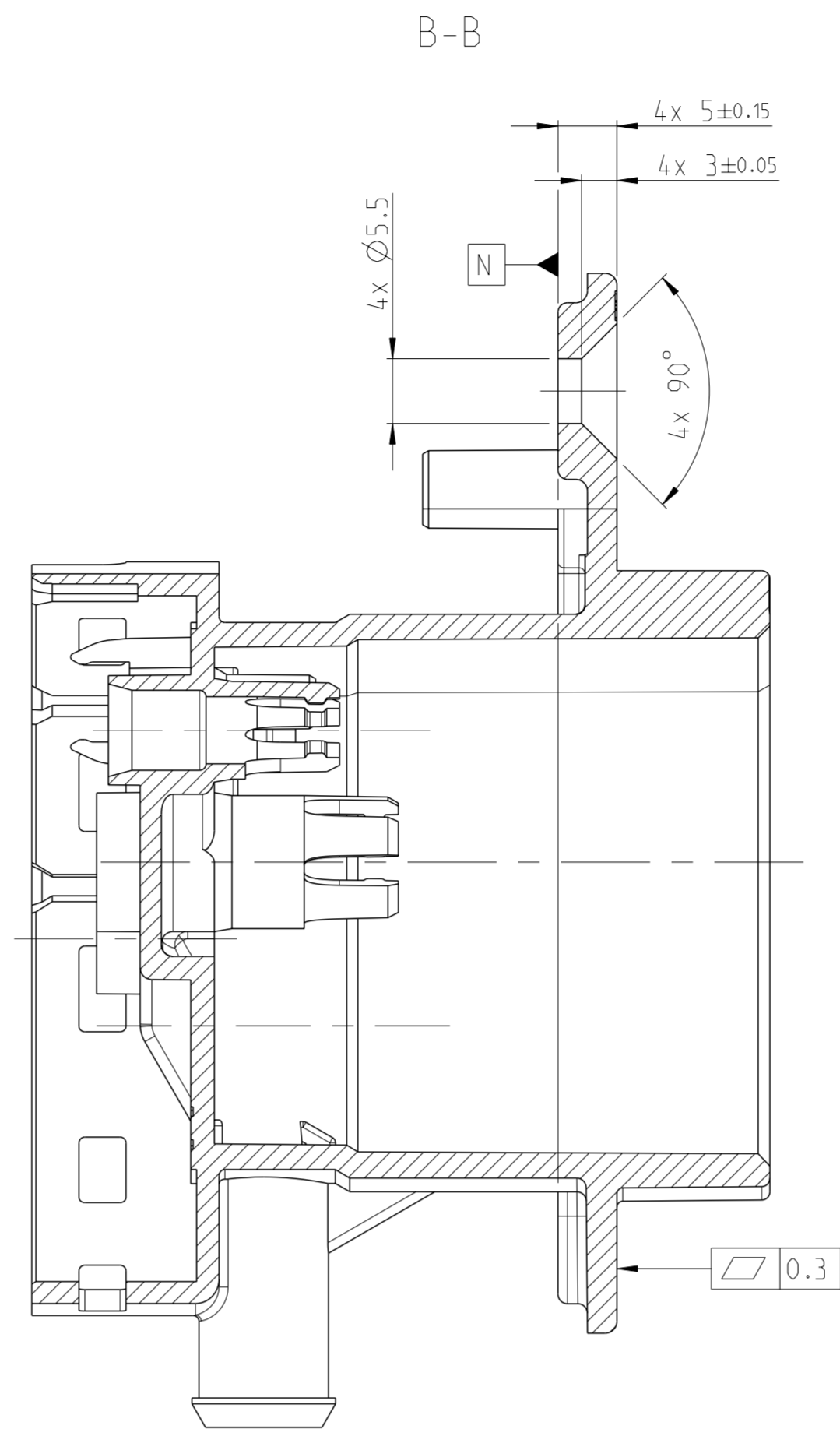
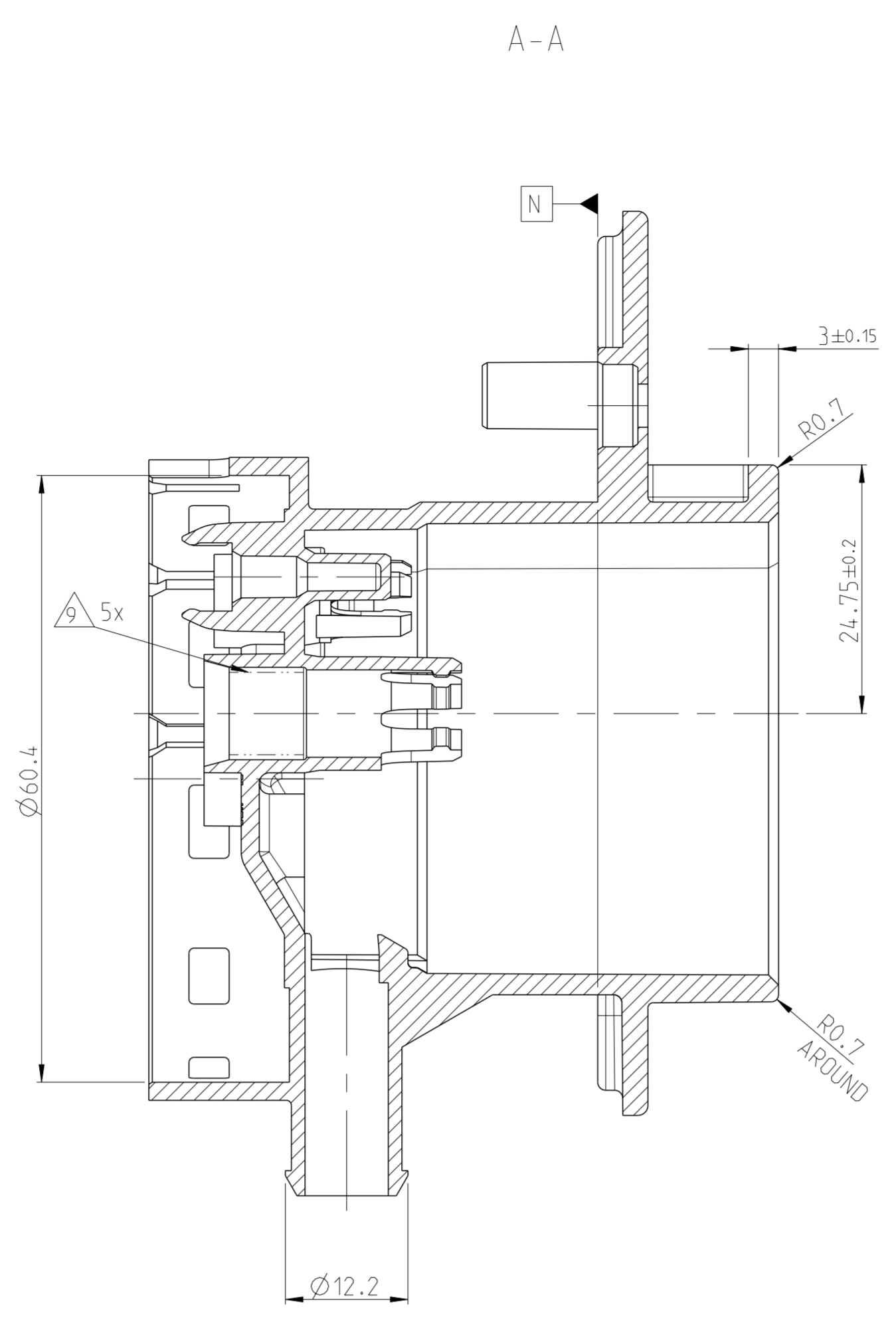
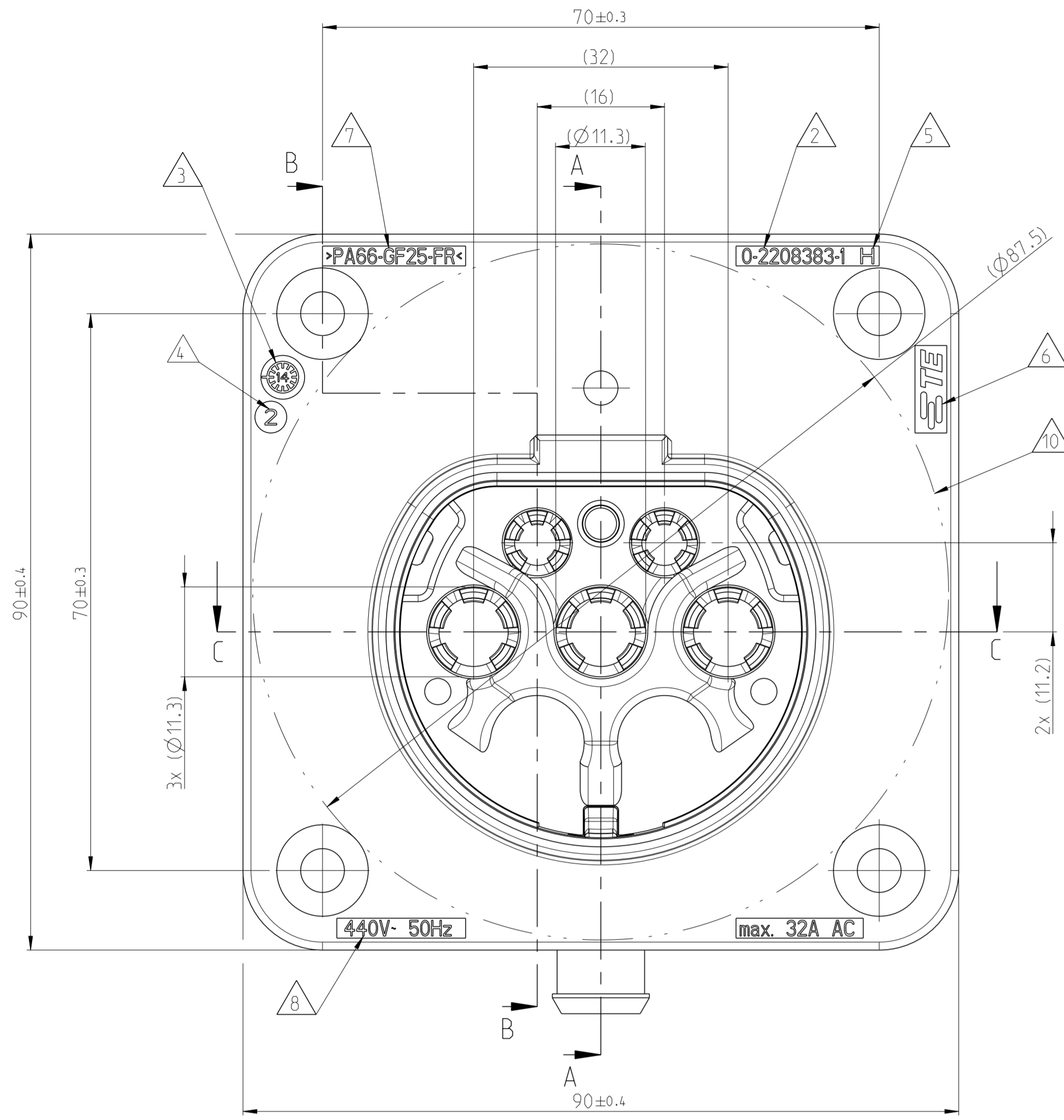
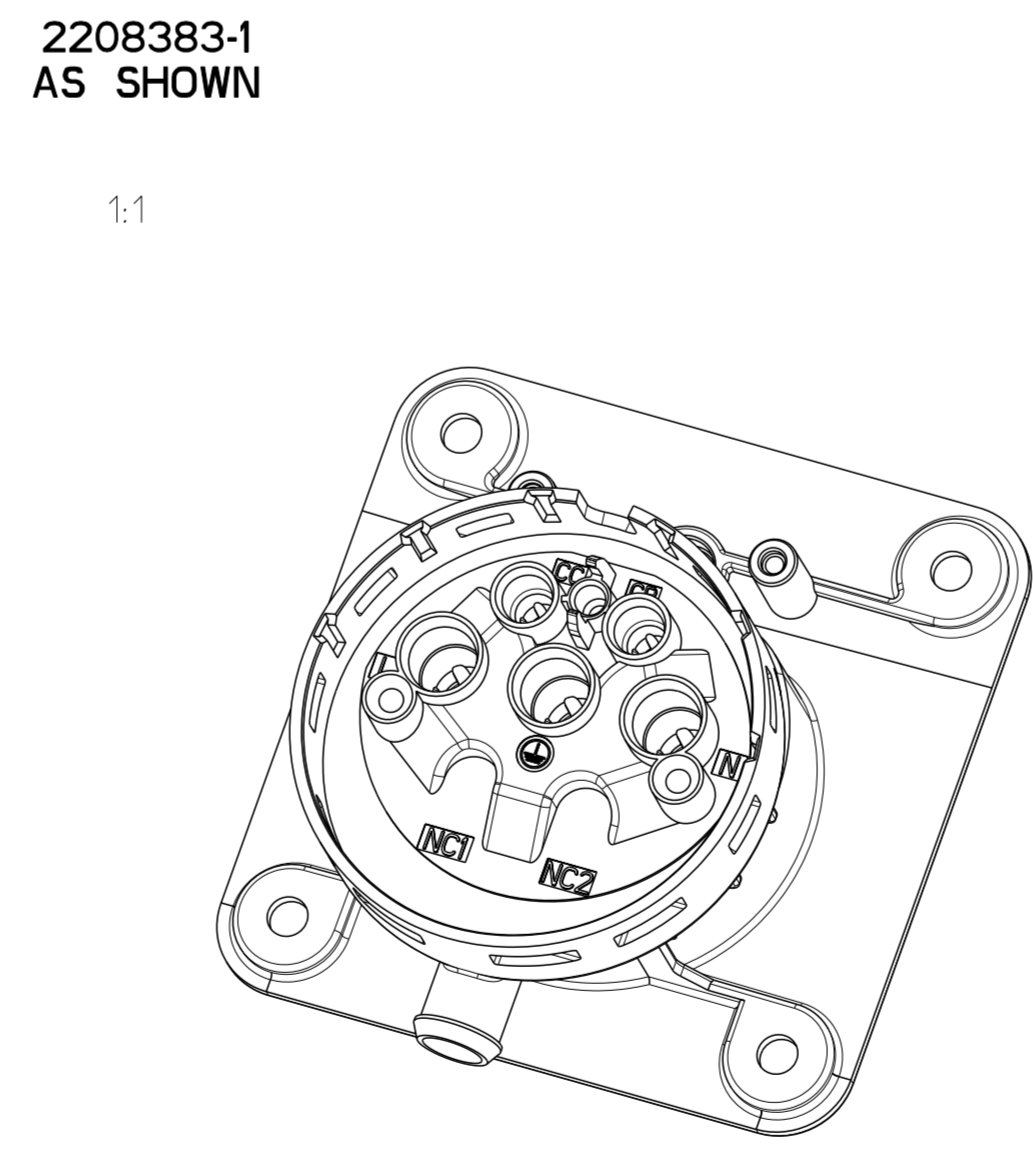
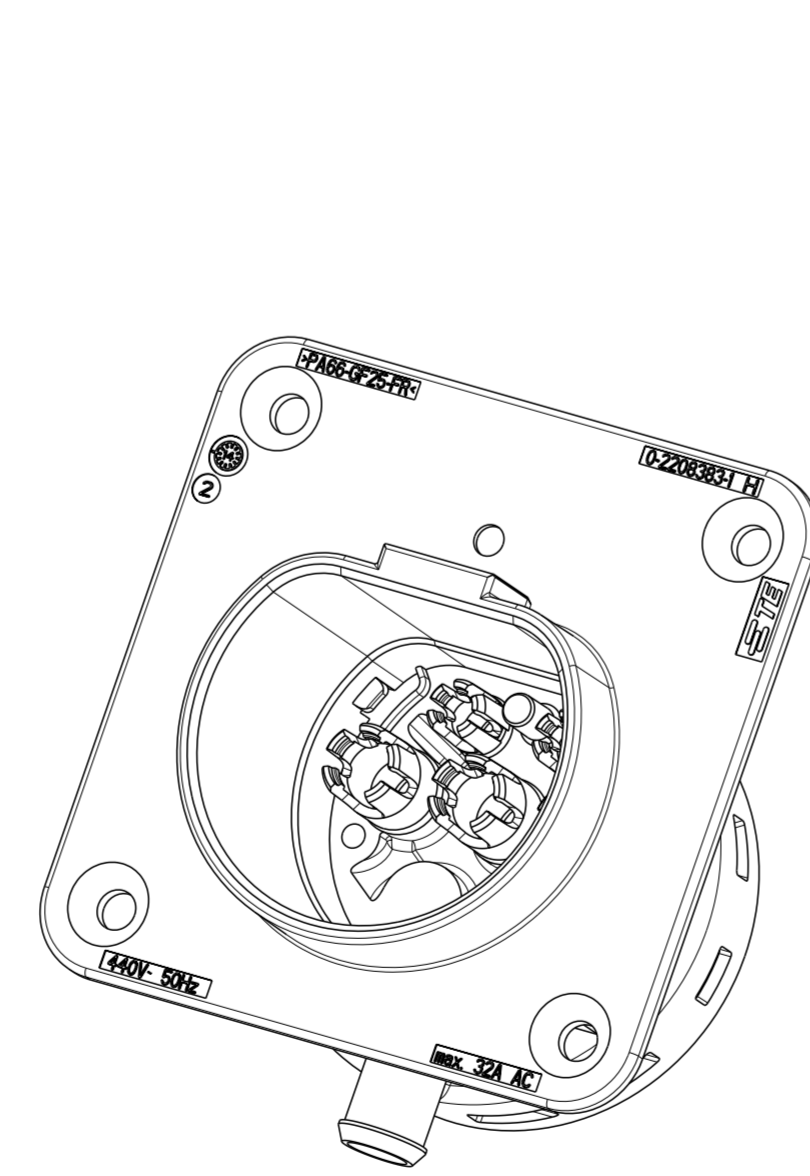
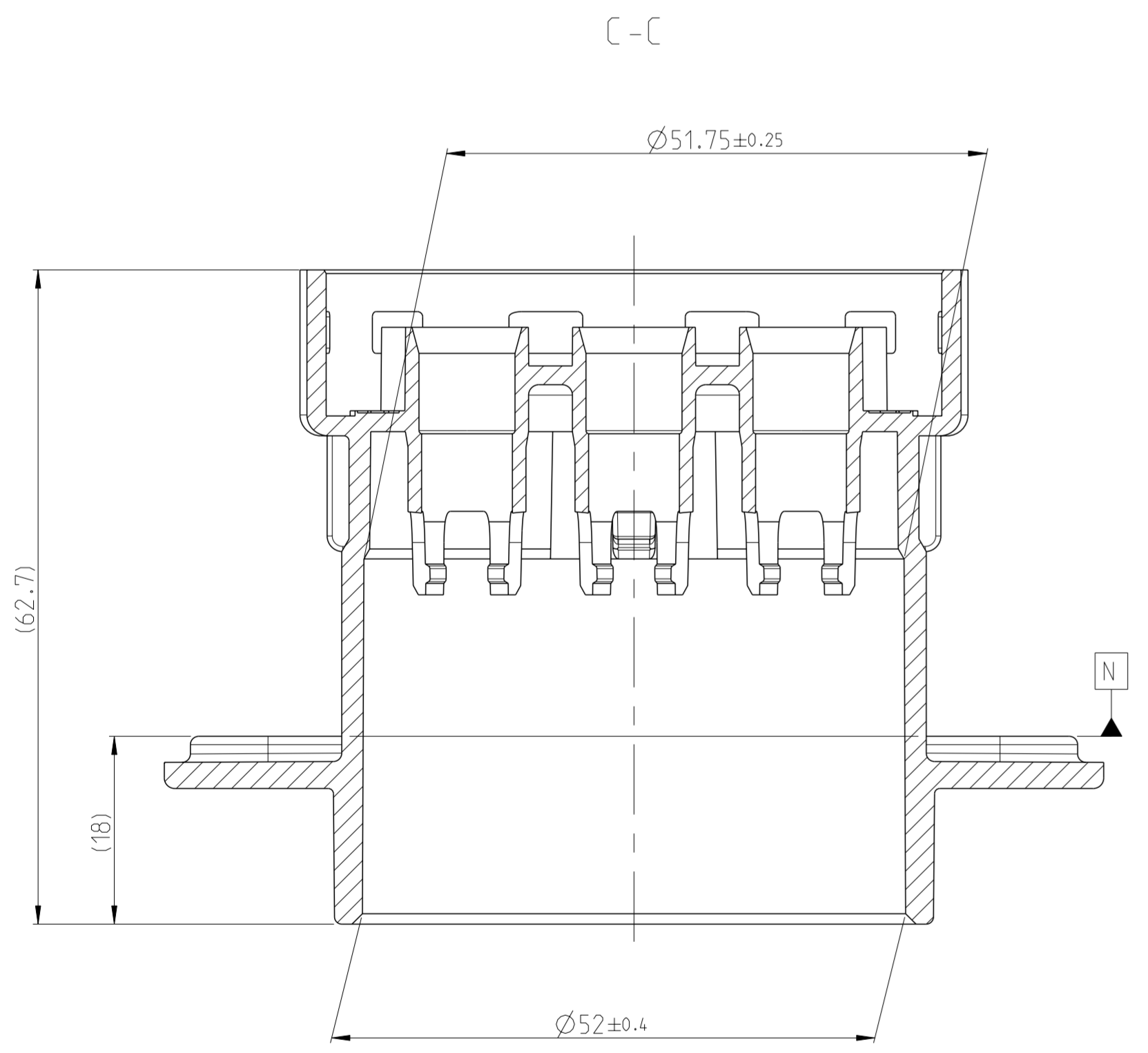


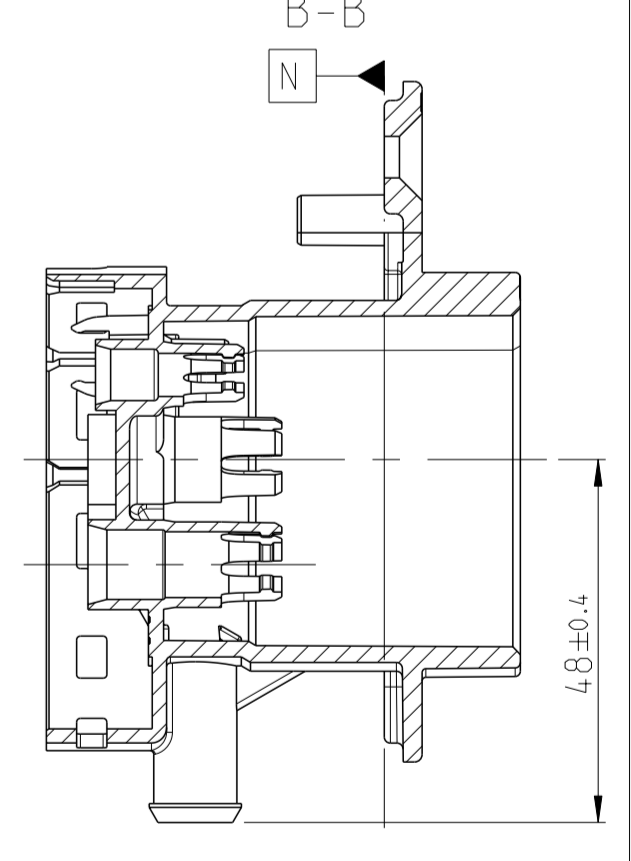
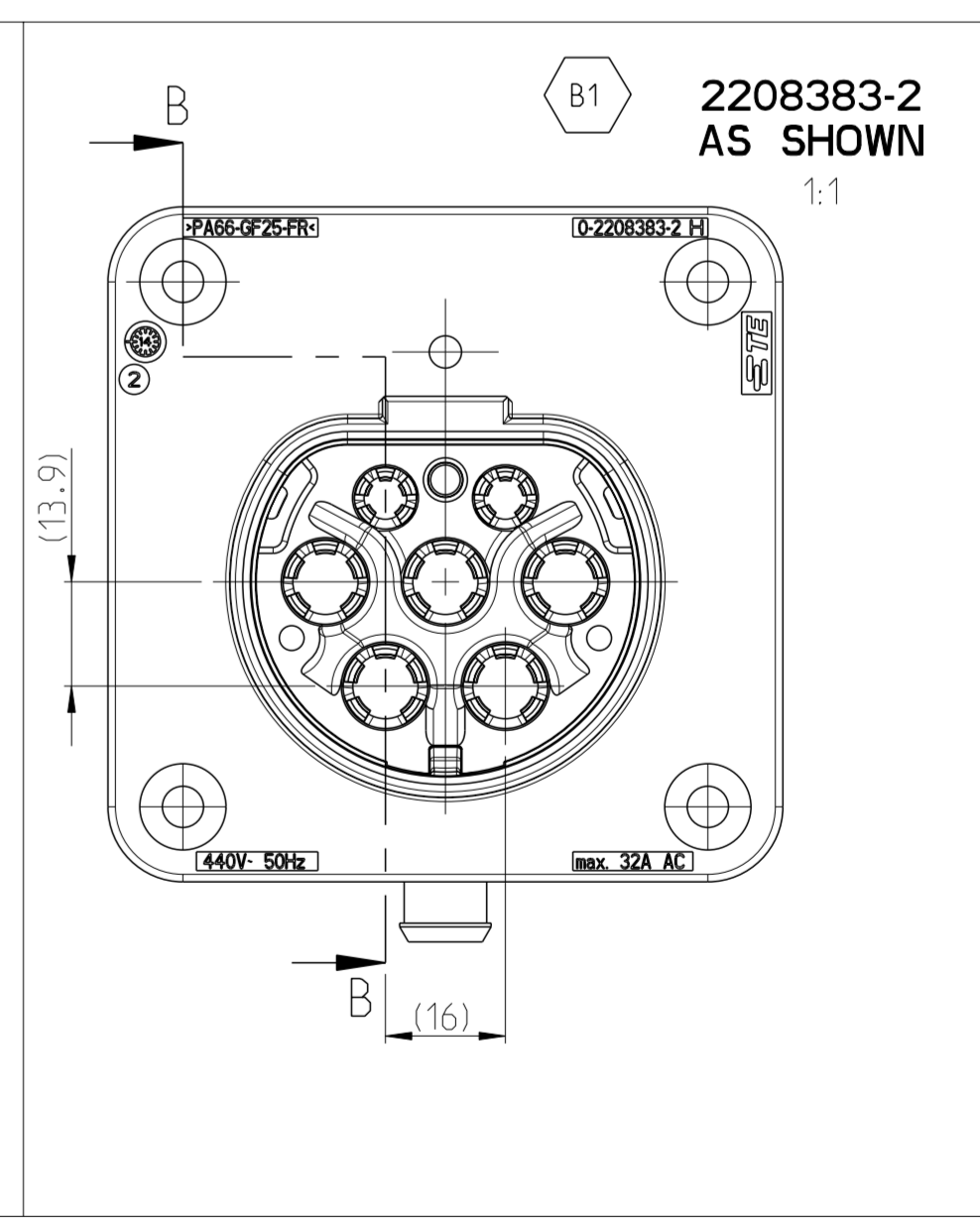
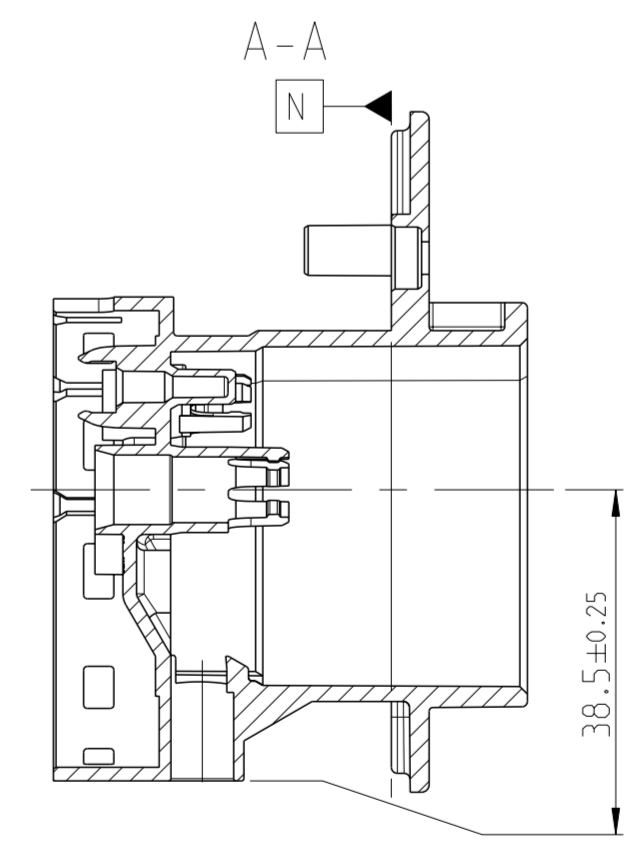
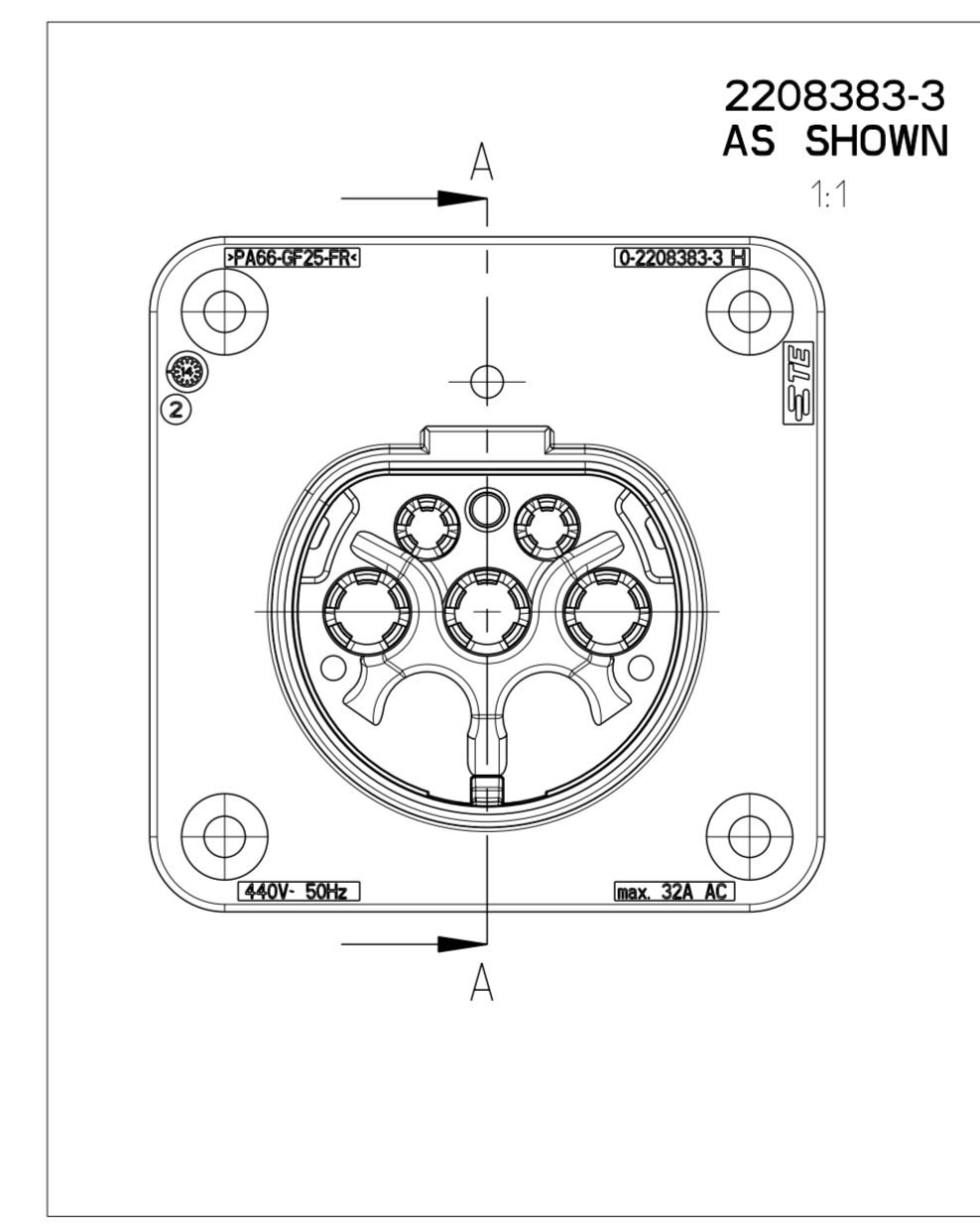
REV.	DESCRIPTION	DATE	BY	APPV.
A	NEW DRAWING	20181204	MKP	PWI
B	RADIUS ADDED	19180206	BB	PWI
B1	2208383-2 VARIANT MADE ACTIVE, SPEC. ADDED	01MAR2021	SGS	PST



- 1 IN CASE OF DISCREPANCIES BETWEEN GERMAN AND ENGLISH TEXT THE GERMAN TEXT IS BINDING. Im Falle von Unterschieden zwischen dem deutschen und dem englischen Text ist der deutsche Text verbindlich.
- △ TE PART NUMBER SINGLE PART
TE-Teilenummer Einzelteil
 - △ PRODUCTION DATE
Produktionsdatum
 - △ CAVITY MARKING IF MULTIPLE CAVITY TOOL
Nestmarkierung falls mehrsträngiges Werkzeug
 - △ PART REVISION
Teilerevision
 - △ TE-TRADEMARK
TE-Warenzeichen
 - △ MATERIAL MARKING ACC. TO VDA 260
Materialkennzeichnung nach VDA 260
 - △ VOLTAGE, FREQUENCY
Max. Spannung; Frequenz
 - △ SEALING SURFACES Rz1max 6.3µm
NO SINK MARKS, NO WARPAGE, NO FLASH/BURR.
NO EJECTOR, NO DAMAGE ALLOWED
Dichtfläche Rz1max 6.3µm
Keine Eintalstellen, kein Verzug, keine Ausformschrägen,
keine Auswerfer, keine Werkzeugtrennung und Beschädigung zulässig
 - △ VISIBLE SURFACE
Sichtfläche
 - 11 BULK PACKAGING IN PLASTIC BAG AND CORRUGATED SHIPPING BOX
Schüttgut in Beutel und Versandkarton
 - △ IDENTIFICATION FOR CONTACTS AS SHOWN
Kontaktkennzeichnung wie gezeigt



2208383-1 AS SHOWN 1:1



2208383-2 AS SHOWN 1:1

TE-PART-NO.	REV	DESCRIPTION	MATERIAL	WEIGHT [g]	COLOUR
2208383-3	H	5POS. MIXED, HSG, GB 5polig, Gehäuse, Ladedose	PA66-GF25-FR	66.1	BLACK SCHWARZ RAL 9011
2208383-2	H	7POS. MIXED, HSG, GB 7polig, Gehäuse, Ladedose		68.3	
2208383-1	H	5POS. MIXED, HSG, GB 5polig, Gehäuse, Ladedose		66.8	

DIESE ZEICHNUNG IST EIN KONTROLLIERTES DOKUMENT.
 DIMENSIONING AND TOLERANCING PER ISO STANDARDS.
 DIMENSIONING AND TOLERANCING PER ISO STANDARDS.

STE TE Connectivity

5 AND 7POS. MIXED, HSG, GB
 5 und 7polig, Gehäuse, Ladedose GB

Customer Drawing / Kundenzzeichnung

SCALE 1:1 / Maßstab 1:1