

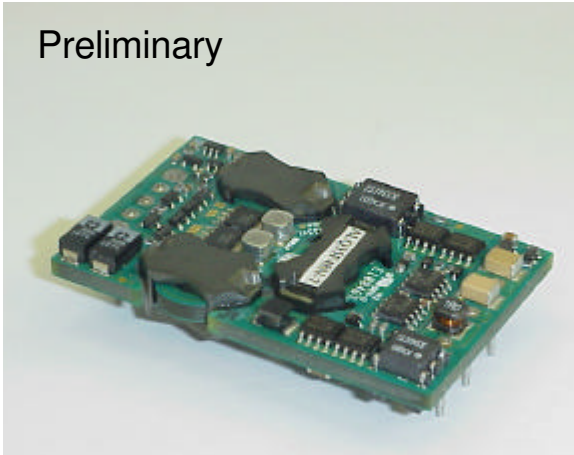
# 40 Amps

## ALQ40

High Efficiency Quarter Brick

Total Power: 144W  
 Input Voltages: 48V  
 No. of Outputs: Single

### Preliminary



### Special Features

- High efficiency (91% Typical)
- -40°C to +70°C Ambient Air Operation
- Industry standard package  
1.48" x 2.30" x 0.38"
- High capacitive load limit on start-up
- Remote sense compensation
- Basic insulation
- Regulation to zero load
- Fixed frequency switching (200KHz)

### Environmental

Ambient air operating temperature range:  
-40°C to +70°C

Storage temperature: -40°C to +125°C

Overtemperature protection: 115°C typical

MTBF: > 1 million hours

### Safety

UL,cUL 60950

TUV EN60950

### Electrical Specs

#### Input

Input Range 36 to 75 VDC  
 Input Surge 100V /100ms  
 Efficiency 91%@3.3V Typ

#### Output

Load Regulation 10mV typical down to no load  
(3V3 output and below)

Line Regulation 10mV typical  
(3V3 output and below)

Voltage Tolerance ±1%

Noise/Ripple 100mV max typ  
150mV max for 5V

Remote sense Up to 10% of Vo

Transient Response 5% max deviation with 25% to 75% full  
(output 5V and above)  
200mV (output below 5V)  
500µs (max) recovery

Overvoltage Protection 140% nominal output

Current Limit 140% nominal output

Switching Frequency 200KHz (typ)

#### Control

Voltage Adjust 90 to 110% for 5V output  
80 to 110% for 3.3V and below

Enable TTL compatible  
(positive & negative enable options)

**AMERICAS**

5810 Van Allen Way  
 Carlsbad, CA 92008  
 Telephone: 760-930-4600  
 Facsimile: 760-930-0698

**EUROPE**

Astec House, Waterfront Business Park  
 Merry Hill, Dudley  
 West Midlands, DY5 1LX, UK  
 Telephone: 44 (1384) 842-211  
 Facsimile: 44 (1384) 843-355

**ASIA**

Units 2111-2116, Level 21  
 Tower 1, Metroplaza  
 223, Hing Fong Road  
 Fwai Fong, New Territories  
 Hong Kong  
 Telephone: 852-2437-9662  
 Facsimile: 852-2402-4426

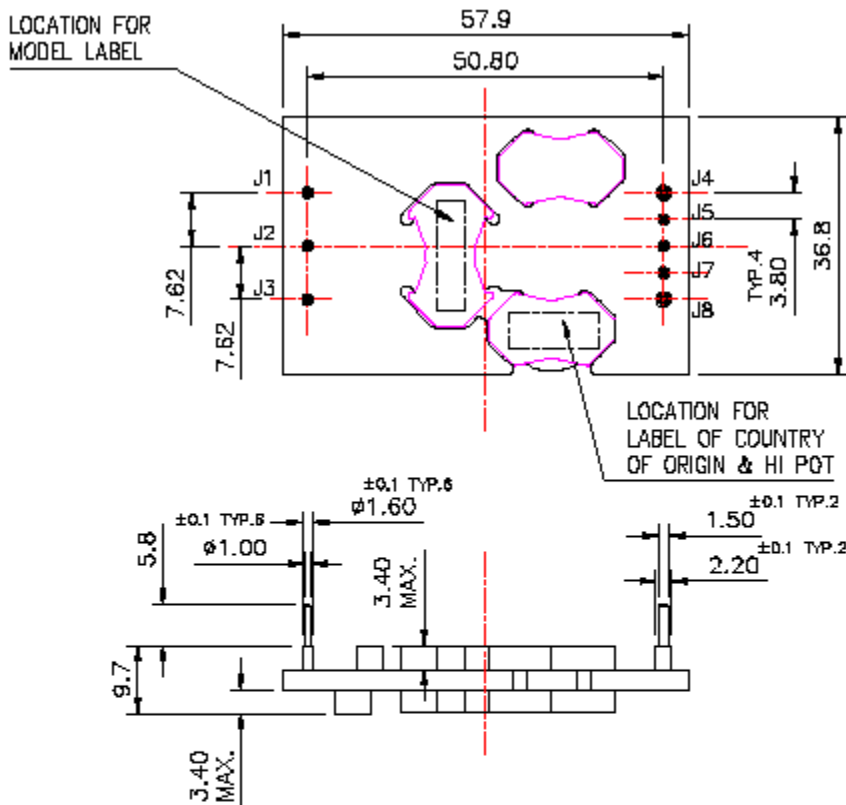


**Ordering Information**

Input Voltage	Output Voltage	Output Current	Efficiency	Model Number
36V to 75V	5.0V	25A	91% Typ	ALQ25A48
36V to 75V	3.3V	35A	90% Typ	ALQ35F48
36V to 75V	2.5V	40A	89% Typ	ALQ40G48
36V to 75V	1.8V	40A	87% Typ	ALQ40Y48
36V to 75V	1.5V	40A	85% Typ	ALQ40M48
36V to 75V	1.2V	40A	84% Typ	ALQ40K48

NOTES: "N" = Negative logic enable (without "N" = Positive logic enable)

**Pin Assignments**



- J1: -Vin
- J2: ENABLE
- J3: +Vin
- J4: -Vo
- J5: -SENSE
- J6: TRIM
- J7: +SENSE
- J8: +Vo

**Notes:**

Nominal values apply with sense pins connected to +Vout and Ground Return with other control pins unconnected.

Specifications subject to change without