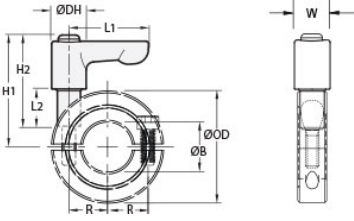




LVO-MSP-11-A

Ruland LVO-MSP-11-A, 11mm Two-Piece Shaft Collar with Clamping Lever, Aluminum Collar with Zinc Plated Lever, 28mm OD, 11mm Width



Description

Ruland LVO-MSP-11-A is a two-piece quick clamping shaft collar with clamping lever with a 11mm bore, 28mm OD, and 11mm width. It is made from MSP-11-A and LF30-CL-M4:12-ZS. The clamp style design does not mar the shaft, is easy to remove, and is indefinitely adjustable. Two-piece shaft collars can be assembled in-lace without the need to remove other components. Ruland mates halves throughout the manufacturing process for proper fit, alignment, and holding power. The threaded stud on the lever is used in place of standard collar hardware. When combined, the two parts create a shaft collar that requires no tools to install, remove, or reposition and is ideally suited for packaging, printing, and other applications where frequent setup changes and adjustments are needed. Once the lever is installed in the shaft collar, users simply turn the lever until they meet their desired torque. The adjustable lever can be reposition by the user without the loss of holding power by lifting the handle and twisting it 40° to lock it in a new position. This allows for use in space constrained environments where 360° rotation is not possible to fully seat the lever. MSP-11-A is made from high-strength 2024 aluminum. LF30-CL-M4:12-ZS has a zinc plated steel handle and stainless steel threaded stud. This material combination allows for a lightweight durable quick clamping and release component that is suitable for most industrial applications. The lever is orange for safety and ease of identification. MSP-11-A is manufactured by Ruland and LF30-CL-M4:12-ZS is manufactured by Otto Ganter. LVO-MSP-11-A is RoHS3 and REACH compliant.

Product Specifications

Bore (B)	11 mm	Bore Tolerance	+0.050 mm / +0.012 mm
Outer Diameter (OD)	28 mm	Center to Lever Top H1	32.2 mm
Width (W)	13 mm	Width Tolerance	+0.076 mm / -0.254 mm
Lever Length L1	30 mm	Lever Height H2	32 mm
Hub Diameter DH	13 mm	Sleeve Length L2	12 mm
Recommended Gap	1.59 mm	Recommended Shaft Tolerance	+0.000 mm / -0.013 mm
Thread TH	M4	Hex Wrench Size	3.0 mm
Seating Torque	4.6 Nm	Screw Location (R)	10.01 mm
Number of Screws	2 ea	Collar Part Number	MSP-11-A
Lever Part Number	LF30-CL-M4:12-ZS-O	Collar Material	Aluminum
Collar Finish	Bright	Handle Color	Orange
Handle Material	Zinc	Handle Finish	Powder Coated
Insert and Screw Material	303 Stainless Steel	Manufacturer	Ruland Manufacturing
Country of Origin	Shaft Collar - USA Lever - Germany	Weight (lbs)	0.131800
UPC	634529294574	Tariff Code	8483.60.8000
UNSPC	31162811		
Note 1	Performance ratings are for guidance only. The user must determine suitability for a particular application.		
Prop 65	⚠️ WARNING This product can expose you to the chemical Soots, Benzene, Lead, Nickel (metallic), and Ethylene Thiourea		