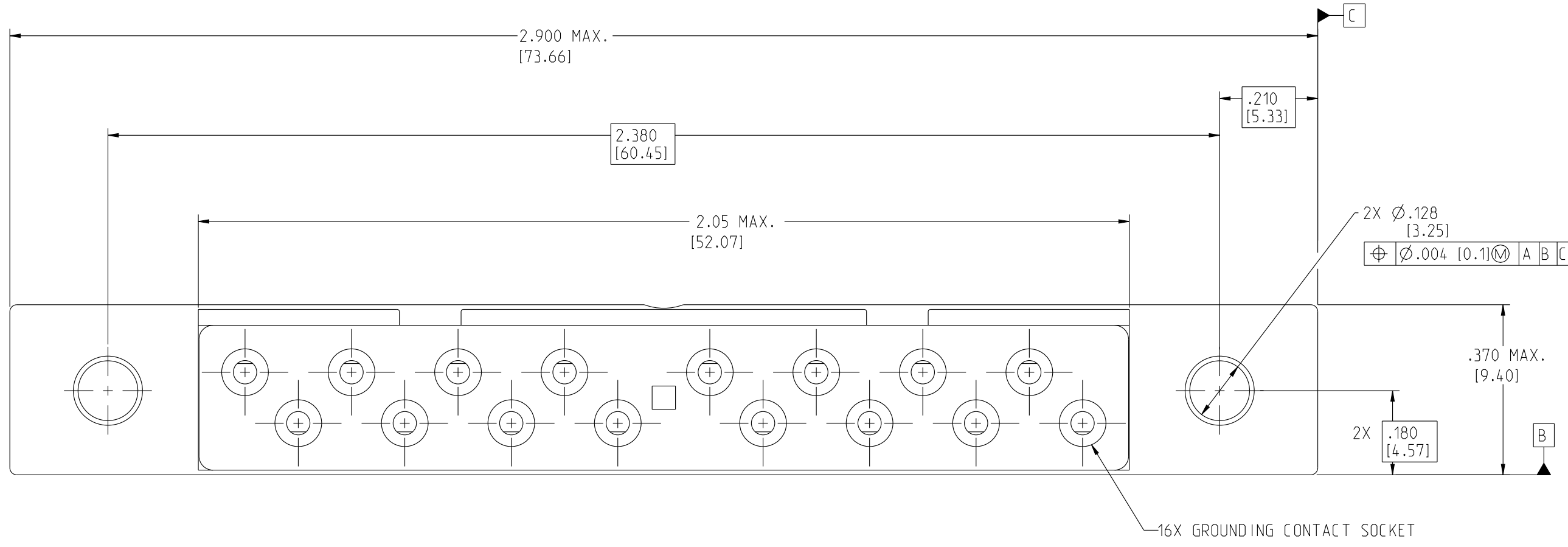


THIS DRAWING IS A CONTROLLED DOCUMENT FOR SOURIAU USA, INC. IT IS SUBJECT TO CHANGE WITHOUT NOTIFICATION. CONTACT THE DOCUMENT CONTROL CENTER FOR THE LATEST REVISION.



NOTES: UNLESS OTHERWISE SPECIFIED.

- GROUND BLOCK ACCOMMODATES PIN CONTACTS PER MIL-C-39029/1-101. WITH A WIRE RANGE OF 24-22-20 AWG. USE INSERTION/REMOVAL TOOL PER MIL-1-81969/14C-11.

MATERIAL:

- STRAIN RELIEF GROMMET: SILICONE RUBBER. COLOR RED.
- GROMMET BONDING: EPOXY.
- GROUNDING MODULE BODY: GLASS FORTIFIED THERMOPLASTIC UL94V-0. COLOR BLUE.
- GROUNDING PLATE: ALUMINUM ALLOY PER QQ-A-200.
- GROUNDING RIVETS: ALUMINUM ALLOY.
- GROUNDING SOCKET CONTACTS: BERYLLIUM COPPER.
- CONTACT RETENTION CLIPS: BERYLLIUM COPPER.
- SOCKET CONTACT SLEEVES: GLASS FORTIFIED THERMOPLASTIC UL94V-0. COLOR NATURAL OR LIQUID CRYSTAL POLYMER.

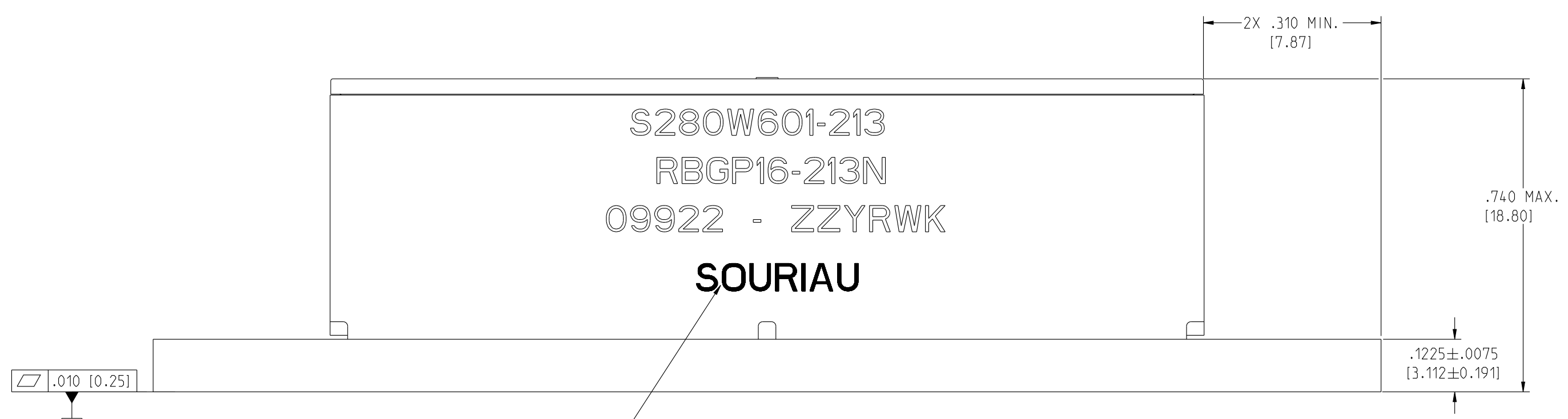
PROTECTIVE COATING:

FINISH:

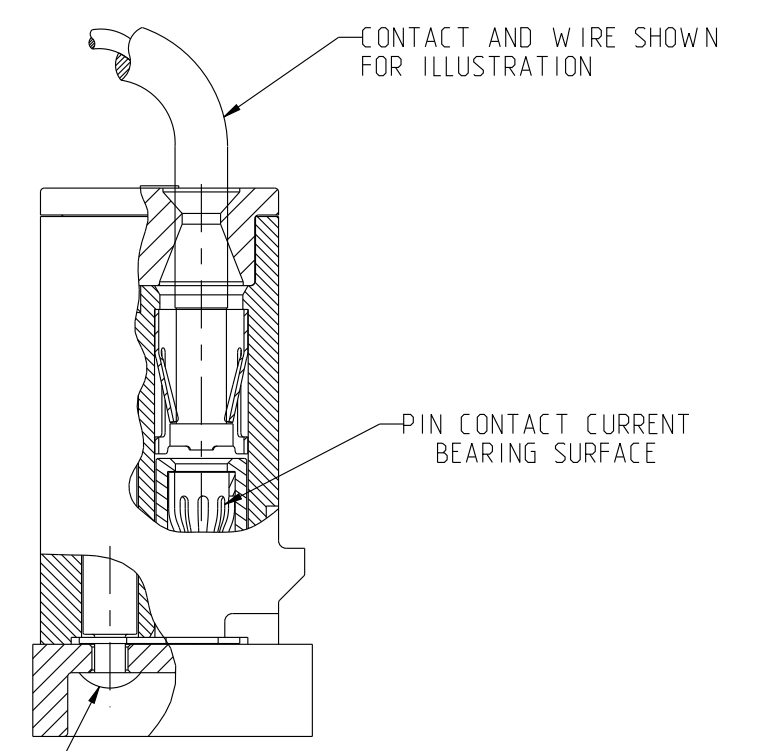
- PROTECTIVE COATING: POLYURETHANE. COLOR OPTIONAL.
- GROUNDING PLATE: SEE TABLE ON SHEET 2.
- GROUNDING SOCKET CONTACTS: 50 MICROINCHES [1.27 MICRONS] MIN. NICKEL ALL OVER. PIN CONTACT CURRENT BEARING SURFACE OVER-PLATED WITH 50 MICROINCHES [1.27 MICRONS] MIN. HARD GOLD.

ESTIMATED CONNECTOR WEIGHT: 15 GRAMS (.53 OZ)

S280W601-213  
RBGP16-213N  
09922 - ZZYRWK  
**SOURIAU**



CUSTOMER PART NO. SOURIAU CATALOG NO. CAGE NO. DATE CODE AND NAME. INK STAMPED COLOR WHITE  
CATALOG NO. RBGP16-213N SHOWN



G	REVISED PER ECN 12046	RSK 08-22-13	SDH 08-22-13
F	REVISED PER ECN 11735	RSK 06-04-12	SDH 06-04-12
E	REVISED PER ECN 8357	SDH 06-28-04	SDH 06-28-04
D	REVISED PER ECN 7622	JRD 09-23-02	SDH 09-23-02
C	REVISED PER ECN 7500	JRD 08-28-02	SDH 08-28-02
B	REVISED PER ECN 7234	JRD 07-10-02	SDH 07-10-02
REV	DESCRIPTION	BY DATE	CHKD DATE

DRAWING TITLE  
**GROUND BLOCK, RACK AND PANEL MOUNTING**

CAT NO. **RBGP16-213 (SEE TABLE)**

CAGE NO: 09922 SIZE: C

**CUSTOMER**

**SOURIAU**

www.souriau.com

INTERPRET THIS DRAWING IN ACCORDANCE WITH ASME Y14.5M - 1994.

APPROVAL

DRAWN:	RSK	05-18-12
CHKD:	SDH	05-18-12
DSGN:	FDH	03-01-93
MFG:	DH	05-18-12
QC:	BB	05-18-12

DRAWING SCALE: 4:1

DRAWING NO. **SE95205** REV **G**

1 OF 2

LINEAR MEASURE:  $\frac{\text{INCH}}{\text{mm}}$  INCH [mm]

THIRD ANGLE PROJECTION

TOLERANCES UNLESS OTHERWISE SPECIFIED

No. OF PLACES	INCH [mm]
ONE PLACE	±.1 [±3]
TWO PLACES	±.02 [±0.5]
THREE PLACES	±.010 [±0.25]

ANGLES ±1°

THE INFORMATION CONTAINED IN THIS DRAWING IS CONFIDENTIAL AND MAY NOT BE DISCLOSED WITHOUT WRITTEN CONSENT FROM SOURIAU USA, INC.

DWG. NO. SE95205

### PERFORMANCE CHARACTERISTICS

#### MECHANICAL:

- MAGNETIC PERMEABILITY: ALL MATERIALS DO NOT EXHIBIT A RELATIVE MAGNETIC PERMEABILITY OF GREATER THAN 2 IN ACCORDANCE WITH MIL-STD-1344, METHOD 3006.
- MAINTENANCE AGING: IN ACCORDANCE WITH MIL-STD-1344, METHOD 2002
- CONTACT INSERTION FORCE: 10 LBS [44.4N] MAX. IN ACCORDANCE WITH MIL-STD-1344, METHOD 2002.
- CONTACT SEPARATION FORCE: 2.0 OZ [0.56N] MIN. IN ACCORDANCE WITH S280W601, PARA. 4.6.17.
- CONTACT RETENTION: 20 LBS [88.9N] MIN. IN ACCORDANCE WITH MIL-STD-1344, METHOD 2007. AXIAL DISPLACEMENT DOES NOT EXCEED .012 [0.30]
- PROBE DAMAGE: IN ACCORDANCE WITH S280W601, PARA. 4.6.12.
- INTERNAL CONTACT DURABILITY: 100 CYCLES OF MATING AND UNMATING TO DEPTH OF MECHANICAL AND ELECTRICAL ENGAGEMENT IN ACCORDANCE WITH S280W601, PARA. 4.6.13.
- OVERSIZE PIN CONTACT PROTECTION: GROUND BLOCK DESIGNED TO PREVENT ENTRANCE OF AN OVERSIZE TEST PIN OF Ø.077 [1.78] IN ACCORDANCE WITH S280W601, PARA. 4.6.15.
- CONTACT WALKOUT: IN ACCORDANCE WITH S280W601, PARA. 4.6.16.


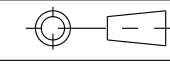
#### ENVIRONMENTAL:

- SALT SPRAY: 48 HOURS IN ACCORDANCE WITH MIL-STD-1344, METHOD 1001, TEST CONDITION B.
- VIBRATION (RANDOM): IN ACCORDANCE WITH MIL-STD-1344, METHOD 2005, TEST CONDITION V, LETTER E.
- MECHANICAL (IMPACT) SHOCK: IN ACCORDANCE WITH MIL-STD-1344, METHOD 2004, TEST CONDITION A.
- THERMAL SHOCK: IN ACCORDANCE WITH MIL-STD-1344, METHOD 1003, TEST CONDITION A, EXCEPT STEPS 2 AND 4 ARE 2 MINUTES MAX. DURATION. TEMPERATURE EXTREMES FOR STEPS 1 AND 3 ARE -65°C +0°/-5°C TO +125°C +5°/-0°C [-85°F +0°/-9°F TO +257°F +9°/-0°F).
- TEMPERATURE LIFE: 125°C +5°/0°C [257°F +9°/0°F] FOR 1000 HOURS IN ACCORDANCE WITH S280W601, PARA. 4.6.10.

#### ELECTRICAL:

- CONTACT RESISTANCE: IN ACCORDANCE WITH MIL-STD-1344, METHOD 3004, SIZE 16-20: 45 MILLIVOLTS MAX. AT 7.5 AMPS WITH 20 AWG SILVER PLATED WIRE.
- LOW LEVEL CONTACT RESISTANCE: IN ACCORDANCE WITH MIL-STD-1344, METHOD 3002 SIZE 16-20: .009 OHMS MAX. WITH 20 AWG SILVER PLATED WIRE.
- VOLTAGE STABILITY: 4 MILLIVOLT MAX. DIFFERENCE BETWEEN RECORDED HIGHEST AND LOWEST POTENTIAL DROP VALUES IN ACCORDANCE WITH S280W601, PARA. 4.6.14.

CATALOG NO. DESCRIPTION TABLE		
CATALOG NO.	CUSTOMER PART NO.	GROUNDING PLATE FINISH
RBGP16-213	-	CHROMATE CONVERSION COATED PER MIL-C-81706, CLASS 3, METHOD C, COLOR GOLD (REF: ALODINE 1200)
RBGP16-213N	S280W601-213	NICKEL PLATED PER MIL-C-26074, CLASS 3, GRADE B (500 MICROINCHES [12.7MICRONS] MIN.)

LINEAR MEASURE: 	
THIRD ANGLE PROJECTION 	
TOLERANCES UNLESS OTHERWISE SPECIFIED	
No. OF PLACES	INCH [mm]
ONE PLACE	±.1 [±3]
TWO PLACES	±.02 [±0.5]
THREE PLACES	±.010 [±0.25]
ANGLES ±1°	

DRAWING TITLE <b>GROUND BLOCK, RACK AND PANEL MOUNTING</b>			
CAT NO. <b>RBGP16-213 (SEE TABLE)</b>			
CAGE NO: 09922		SIZE: C	
<b>CUSTOMER</b>		<b>SOURIAU</b>	
www.souriau.com		DRAWING SCALE: 4:1	
SE95205		REV G	
2 OF 2		PRO-E	

THIS DRAWING IS A CONTROLLED DOCUMENT FOR SOURIAU USA, INC. IT IS SUBJECT TO CHANGE WITHOUT NOTIFICATION. CONTACT THE DOCUMENT CONTROL CENTER FOR THE LATEST REVISION.

C

B

THE INFORMATION CONTAINED IN THIS DRAWING IS CONFIDENTIAL AND MAY NOT BE DISCLOSED WITHOUT WRITTEN CONSENT FROM SOURIAU USA, INC.

D

C

B

A