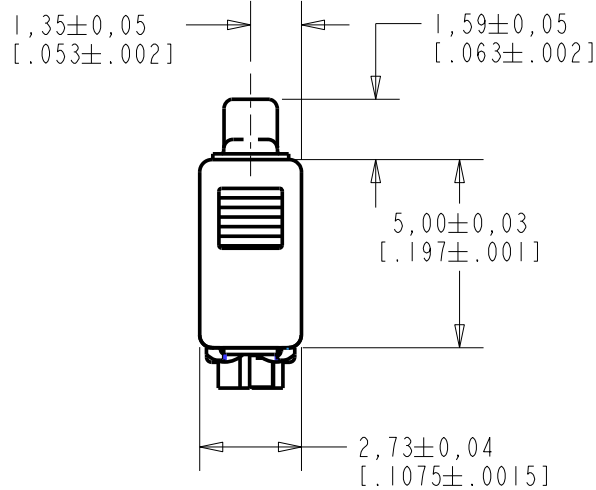


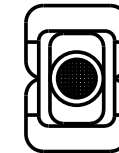
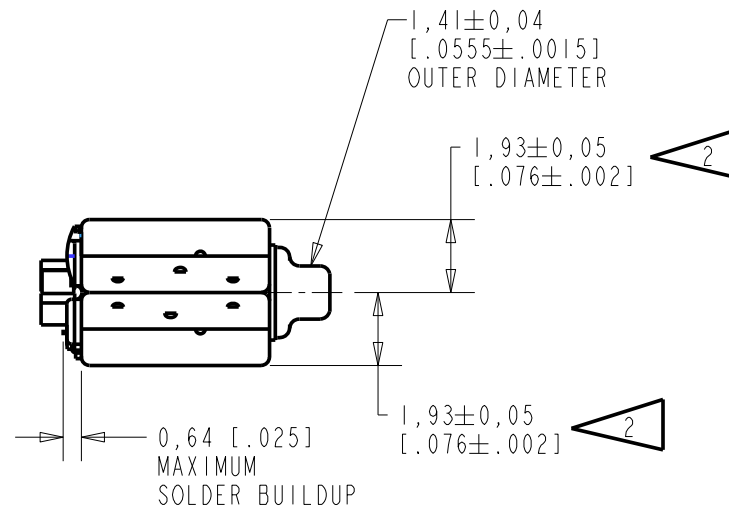
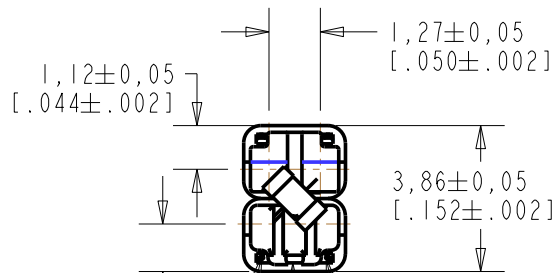
TWFK-30195-000

SHT 1.1



NOTES:

- 1 A POSITIVE GOING VOLTAGE AT TERMINAL 2, RELATIVE TO TERMINAL 1, CAUSES A DECREASE IN PRESSURE AT THE SOUND OUTLET.
- 2 LOCATED FROM TWO SURFACES FOR CUSTOMER CONVENIENCE. ONLY APPLICABLE FROM ONE SURFACE, NOT TO BE USED TOGETHER.



1,12±0,05
[.044±.002]



TERMINAL 1
(NEGATIVE)

TERMINAL 2
(POSITIVE)

UNUSED TERMINAL
RUBBER SEAL REMOVED FOR
BACK VENT AFTER FINAL TEST

SCALE 2:1

DIMENSIONS IN MILLIMETERS [INCHES]



Revision	C.O. #	Implementation Date	RELEASE LEVEL	REVISION
C	C10108259P	12-18-08	Active	C
B	C10106978	1-11-08		

SCALE:

5:1

DO NOT SCALE DRAWING

TITLE:

RECEIVER

TWFK-30195-000

OUTLINE DRAWING

SHT 1.1

DR. BY	DATE
CRG	8-16-07
CK. BY	DATE
GJP	8-17-07
APP. BY	DATE
GJP	8-17-07

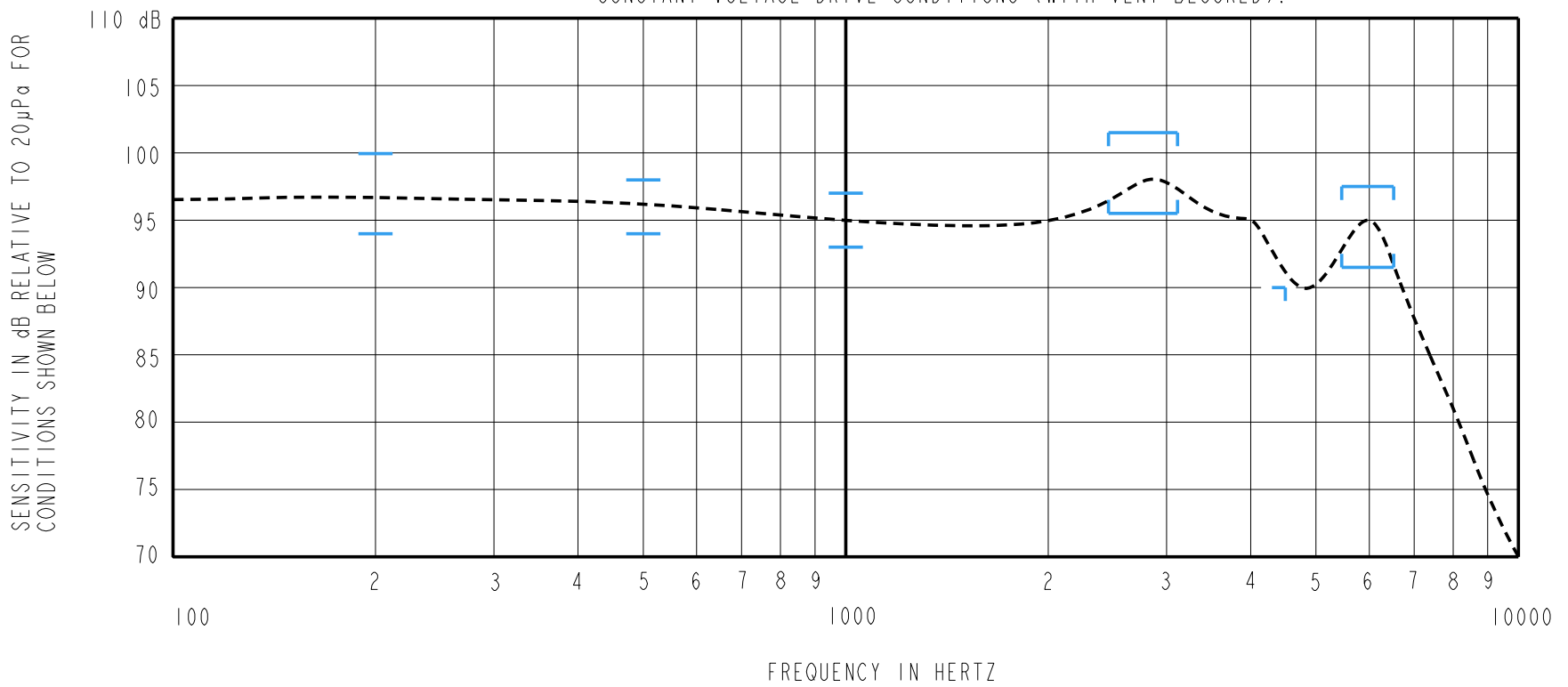
KNOWLES ELECTRONICS
ITASCA, ILLINOIS U.S.A.

MAGNETIC BALANCED ARMATURE RECEIVERS INTENDED FOR USE AS THE HIGH AND LOW FREQUENCY DRIVERS IN A Hi Fi SYSTEM. THE TWFK IS A WIDEBAND FK AND FK RECEIVER PAIR WITH AN EXTENDED HIGH FREQUENCY RESPONSE AND SHOCK PROTECTION. UNIT INCLUDES PRE-ATTACHED CROSSOVER CAPACITOR, FK RECEIVER VENTED THROUGH UNUSED TERMINAL.

TYPE 1 DAMPING

TWFK-30195-000
SHEET 2.1

NOTE: SPECIFICATIONS FOLLOWED BY AN ASTERISK (*) ARE 100% TESTED.
CONSTANT VOLTAGE DRIVE CONDITIONS (WITH VENT BLOCKED).



ACOUSTICAL

SENSITIVITY*
DEVICE WILL PRODUCE THE SPL LISTED BELOW UNDER TEST CONDITION IN TABLE 3.
NOMINAL SENSITIVITY AT 1kHz IS dB RELATIVE TO 20 µPa. ALL OTHER VALUES IN dB RELATIVE TO THE SENSITIVITY AT 1kHz.

FREQUENCY (Hz)	MINIMUM	NOMINAL	MAXIMUM
200	-1.0	+2.0	+5.0
500	-1.0	+1.0	+3.0
1000	-2.0	95.0	+2.0
2500-3100	+0.5	+3.5	+6.5
4500	-5.0	---	---
5550-6550	-3.5	-0.5	+2.5

TABLE 1

MECHANICAL

PORT LOCATION: 12S
SOLDER TYPE: SAC305

TEMPERATURE:

OPERATING: SENSITIVITY AT 500Hz WILL NOT VARY BY MORE THAN ±3 dB FROM 0°C TO 63°C.
STORAGE: -40°C TO 63°C.

TOTAL HARMONIC DISTORTION*
DEVICE WILL NOT EXCEED TOTAL HARMONIC DISTORTION LEVELS LISTED BELOW.

FREQUENCY (Hz)	AC DRIVE (V rms)	DC BIAS (mA)	LIMIT (%)
930	0.246	0	5
1400	0.246	0	5
500	0.696	0	8

TABLE 2

TEST CONDITIONS

0.22µF CAPACITOR CONNECTED TO THE INPUT OF THE WBFK RECEIVER

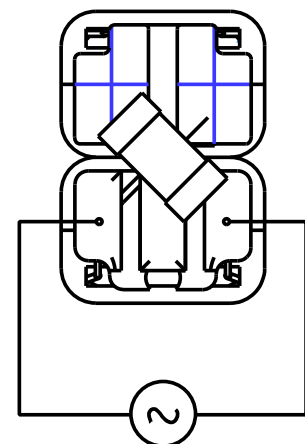
NOMINAL SOURCE VOLTAGE	0.246 V rms, 0 V DC BIAS
SOURCE IMPEDANCE	<1 Ohm
TUBING	10mm [.394"] LONG, 1mm [.039"] I.D.
COUPLER CAVITY	2 CM ³ , SIMULATED ANSI S3.7 TYPE HA-3 (IEC 126)

TABLE 3

ELECTRICAL

DC RESISTANCE	200 Ohms ± 10%* 200 Ohms FK / 50 Ohms WBFK
IMPEDANCE @ 500 Hz	243 Ohms ± 15%*
IMPEDANCE @ 1kHz	353 Ohms ± 15%*

TABLE 4



ISOLATION: CASE WILL BE ELECTRICALLY ISOLATED FROM THE COIL CIRCUIT.

Revision	C.O. #	Implementation Date	RELEASE LEVEL	REVISION
C	C10108259P	12-18-08	Active	C
B	C10106978	1-11-08		
WHEN TEST LIMITS ARE USED TO ESTABLISH INCOMING INSPECTION ACCEPTANCE/REJECTION CRITERIA, CORRELATION OF TEST EQUIPMENT WITH KNOWLES IS ALSO REQUIRED FOR ELIMINATION OF EQUIPMENT AND TEST METHOD VARIATION				
TITLE: RECEIVER		TWFK-30195-000		DR. BY DATE
PERFORMANCE SPECIFICATION		SHT 2.1		CRG 8-16-07
				CK. BY DATE
				GJP 8-17-07
				APP. BY DATE
				GJP 8-17-07

KNOWLES ELECTRONICS
ITASCA, ILLINOIS U.S.A.