



**ANATECH ELECTRONICS INC**  
RF & Microwave Filters & Products

**5G/LTE Band 1/1920-1980 MHz / 2110-2170 MHz  
Connectorized Ceramic Duplexer**



**Part Number: AM1950-2140D1112-C**

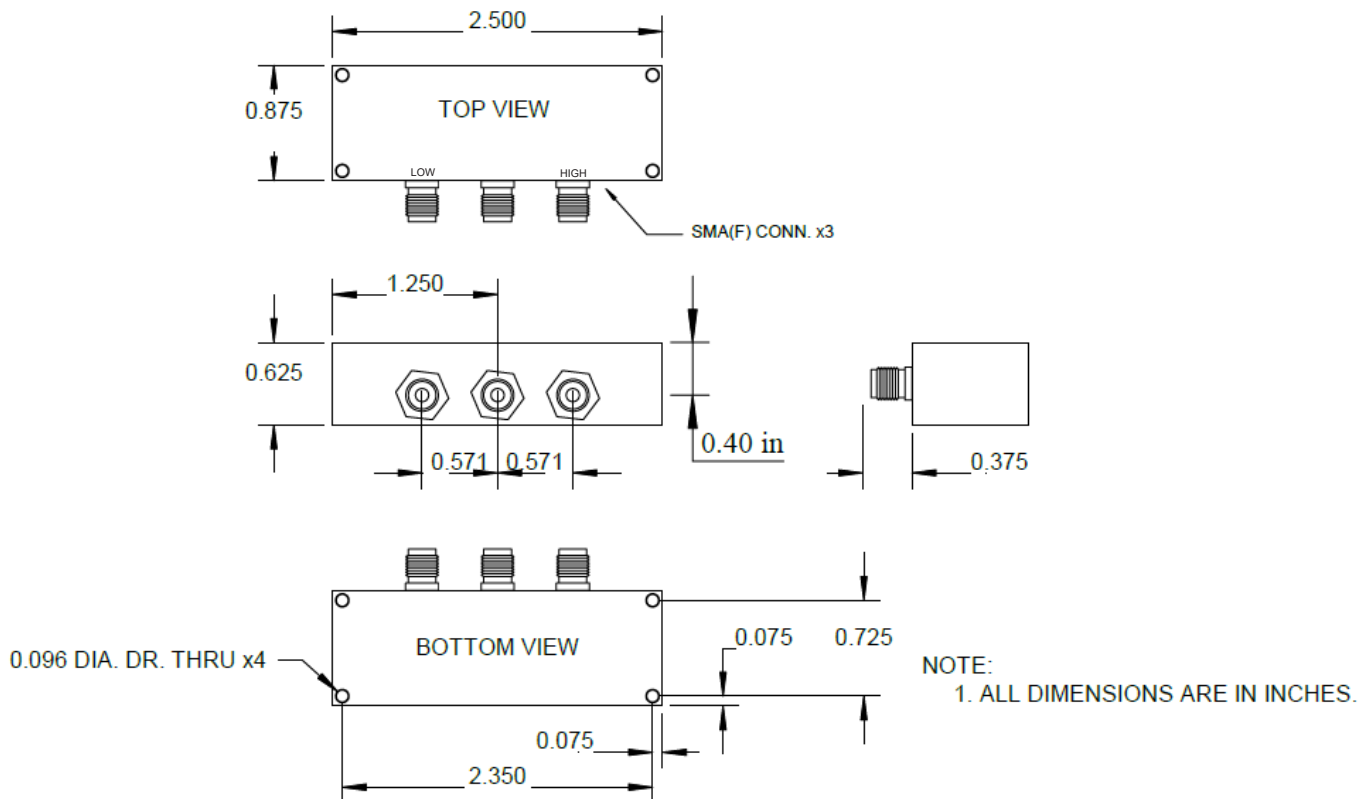
<u>Characteristics</u>	<u>Band 1</u>	<u>Band 2</u>
<b>Passband:</b>	1920-1980 MHz	2110-2170 MHz
<b>Bandwidth:</b>	Fo +/- 30 MHz	Fo +/- 30 MHz
<b>VSWR:</b>	1.5:1 Max	1.5:1 Max
<b>Passband Insertion Loss:</b>	1.5 dB max	1.5 dB max
<b>Passband Ripple:</b>	0.6 dB max	0.6 dB max
<b>Input / Output Impedance:</b>	50 Ohms	50 Ohms
<b>Isolation:</b>	50 dB min	50 dB min
<b>Power Handling:</b>	5 W	5 W

<u>Mechanical</u>	
<b>Connector Type:</b>	SMA (F)
<b>Dimensions:</b>	2.5 x 0.875 x 0.625 in.

<u>Environmental</u>	
<b>Operating Temperature:</b>	-40 to +85 deg.C
<b>Storage Temperature:</b>	-50 to +90 deg.C

**This product is RoHs compliant.**

**Outline Drawing:**



Tolerance: +/-0.01 inches [+/- 0.3mm]

Angles: +/- 1 Deg.

\*Tolerance as shown unless otherwise specified in the datasheet electrical specification tables above.

\*When max dimensions are called out the above tolerances do not apply as long as it is under the max call out.

DS-D1112-C-07212015-Rev0

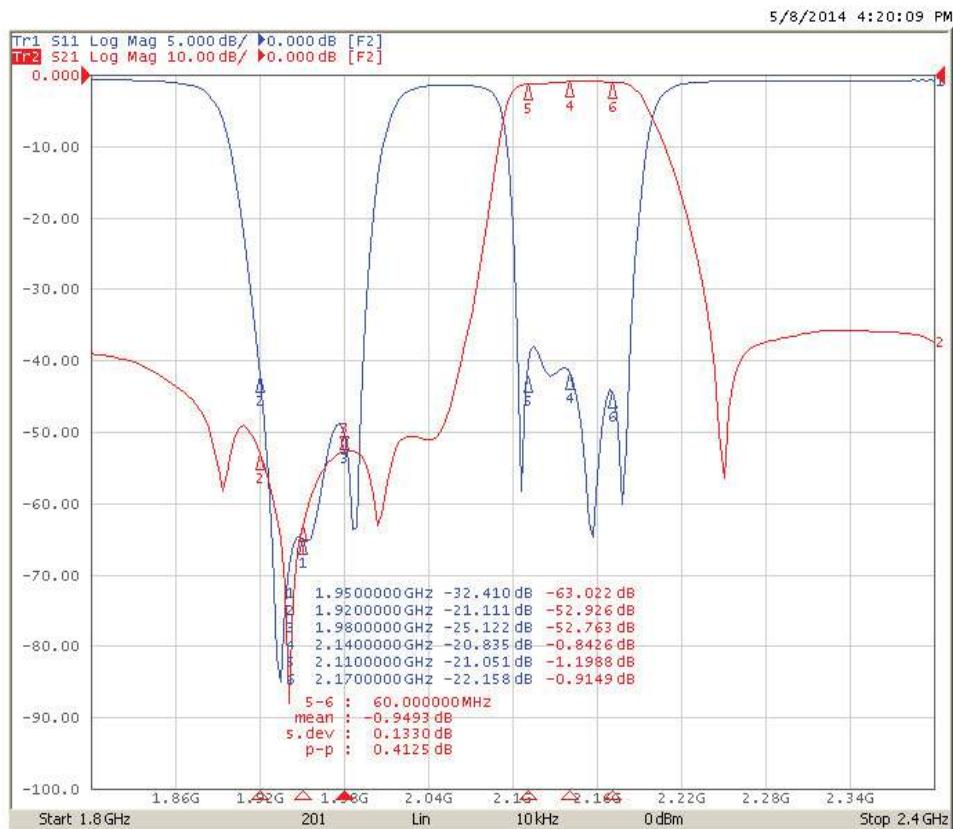


**ANATECH ELECTRONICS INC**  
RF & Microwave Filters & Products

**5G/LTE Band 1/1920-1980 MHz / 2110-2170 MHz  
Connectorized Ceramic Duplexer**



**Part Number: AM1950-2140D1112-C**



DS-D1112-C-07212015-Rev0