

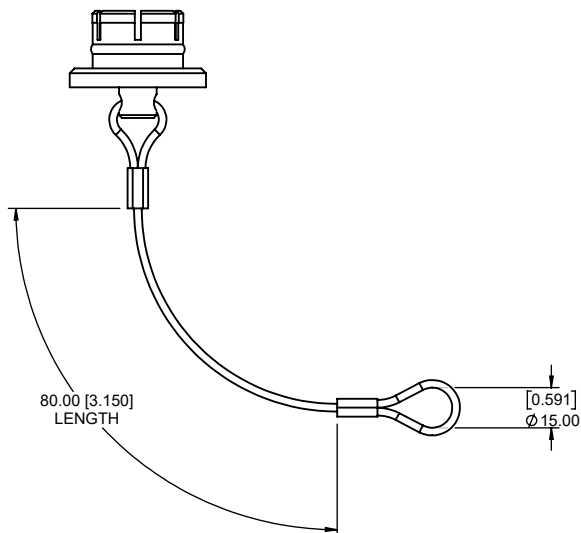
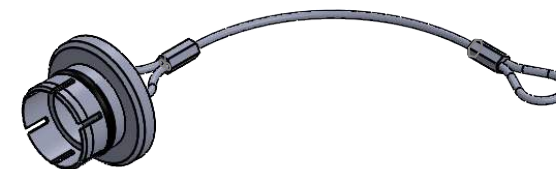
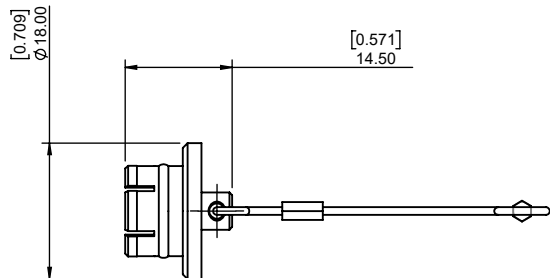
**\*\*NOTE: THIS DUST CAP FITS FEMALE 822B CONNECTORS**

**CHARACTERISSTICS**

**MATERIALS**

- BODY: BRASS
- BODY PLATING: NICKEL
- LANYARD: STAINLESS STEEL
- O-RING: SILICONE RUBBER
- MAXIMUM OPERATING TEMPERATURE: 200°C

IP RATING: 61



**RoHS COMPLIANT**



THESE DRAWINGS AND SPECIFICATIONS ARE THE PROPERTY OF NorComp AND SHALL NOT BE REPRODUCED, COPIED OR USED AS THE BASIS FOR THE MANUFACTURE OR SALE OF APPARATUS WITHOUT WRITTEN PERMISSION.

**NorComp**

DRAWN: M. SIGMON	DATE: 04-06-15	SCALE: N.T.S.	SHEET 1	OF 1	REV: 0
			DWG NO. 822B-DC		