

# ALL-200

## Engineering Universal Programmer

- Supported over **100,000** ICs
- Excellent programming performance on potential device **MCU** and **NOR Flash**
- Palm-size and space saving
- Best for engineering development and QC inspection



### Feature

#### Excellent programming performance

- Self-developed hardware and software, provide high speed and high quality programming
- Full IC pin contact check prevents bad contact in socket or IC damage from reversed placement

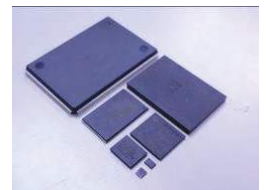
#### Support various IC types

- Support MCU/MPU, NOR/NAND Flash, EEPROM, SPI memory, FPGA, CPLD, etc.



#### Support various IC packages

- Support DIP, SDIP, SOP, SSOP, TSOP, PLCC, QFP, QFN, SON, BGA, WLCSP, etc.

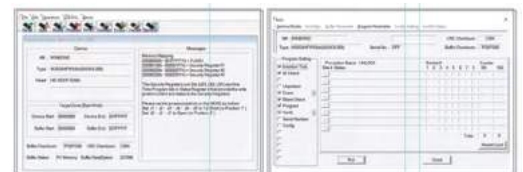


#### High quality adapters

- High quality manufactured socket boards ensure programming quality as well as the lifetime of usage
- Easy to expand programming types for various ICs by simply replacing appropriate adapters

#### User-friendly software interface

- Clear display of each function in the entire programming procedure
- Display details and status of each device during programming



#### Timely software support

- Fast software support by customer's request
- The supporting software is updated weekly on Hi-Lo website for checking or retrieving
- All programming problems will be followed and handled immediately



## ALL-200 *Engineering Universal Programmer*

### Specification

Device supported	MCU/MPU, NOR/NAND Flash, EEPROM, SPI memory, FPGA, CPLD, etc.
Package supported	DIP, SDIP, SOP, SSOP, TSOP, PLCC, QFP, QFN, SON, BGA, WLCSP, etc.
Support IC pin count	8 pins ~ 300 pins
Socket number	1 socket
Key functions	Load File, Read Master, Program, Verify, Auto, ID Check, Checksum, Blank Check, Erase, Secure, Protect / Unprotect, Edit, Function Configuration, Self Test, etc.
Data transfer interface	USB2.0
Compatible OS	Windows 7, 10
Power	AC 100 - 240V / 50 - 60Hz
Power consumption	50 W
Operation temperature	0 ~ 40°C (32 ~ 105°F)
Dimension	W130 x D170 x H40 (mm)
Weight	0.82 kg
Certification	CE certified

2022.03 version

### HI-LO SYSTEMS

#### Headquarters

Hi-Lo System Research Co. Ltd.  
4F, No. 18, Ln. 76, Rueiguang Rd.,  
Neihu Dist., Taipei City 11491, Taiwan (R.O.C.)  
Tel: +886-2-8792-3301  
sales@hilosystems.com.tw

**Hi-Lo Systems Shenzhen /Shenzhen Programming Center**  
Zone A, 2F, Building H, Gang Zhi  
Long Technology Park, Qinglong Rd.,  
Longhua New Dist., Shenzhen City,  
Guangdong Province, China  
Tel: +86-755-8253-6987  
Solution@hilosystems.cn

**Taipei Programming Center**  
5F, No. 110, Ruiguang Rd.,  
Neihu Dist., Taipei City 114062,  
Taiwan (R.O.C.)  
Tel: +886-2-8792-3301  
service4@ms1.hilosystems.com.tw

**Hi-Lo Systems Suzhou /Suzhou Testing Center**  
C block, No.66 Wangmi Street,  
Huqiu District, Suzhou Shi,  
Jiangsu Sheng, China  
Tel: +86-512-6920-3003  
Solution@hilosystems.cn

**Hsinchu Testing Center**  
2F-12, No. 81, Shuili Rd.,  
East Dist., Hsinchu City 300053,  
Taiwan (R.O.C.)  
Tel: +886-3-516-9032  
service2@hilosystems.com.tw

**Falcon Denshi K.K.(Japan)**  
1-1-20 Kounandai Kounan-Ku,  
Yokohama-shi Kanagawa  
Japan Zip 234-0054  
Tel: +81-45-367-8326  
info@falcon-denshi.co.jp

**Tainan Programming Center**  
2F, No. 100, Gongye 2nd Rd.,  
Annan Dist., Tainan City 709015,  
Taiwan (R.O.C.)  
Tel: +886-6-384-0509  
hilosale@hilosystems.com.tw

**USA HI-LO Systems**  
1608 Virginia Dr., Manhattan,  
KS 66502 USA  
Tel: +1-785-320-6992  
sales@hilosystems.com

**Hong Kong Programming Center**  
B2~B4, 8/F, Lladro Centre, No. 72,  
Hoi Yuen Rd., Kwun Tong,  
Kowloon, Hong Kong  
Tel: +852-3568-4001  
service@hilosystems.com.hk

