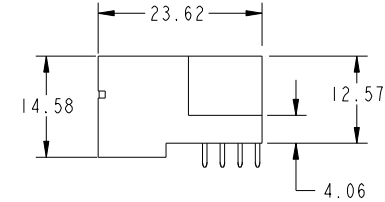
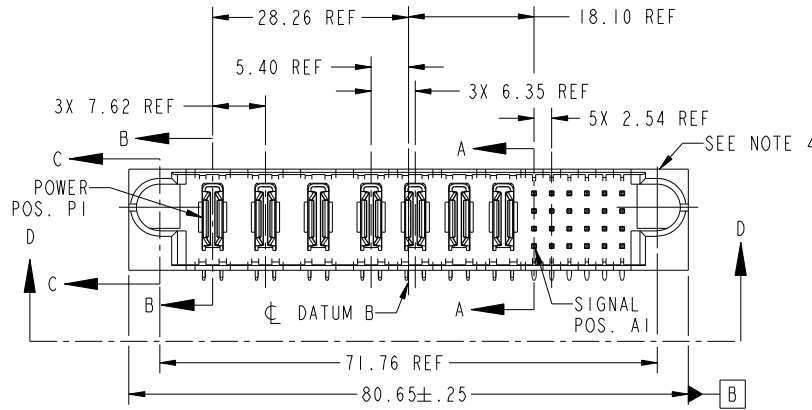
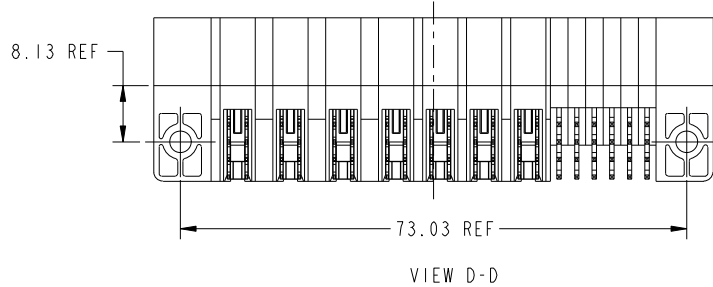


Tous droits strictement reserves. Reproduction ou communication a des tiers interdite sous quelque forme que ce soit sans autorisation écrite du propriétaire. Propriete de c FCI. Droits de reproduction FCI.



All rights strictly reserved. Reproduction or issue to third parties in any form whatever is not permitted without written authority from the proprietor. Property of FCI. Copyright FCI.

PRODUCT NO. 51939-286 NOTE ③	ROWS D C B A	POWER							SIGNAL						E2
		E1	P1	P2	P3	P4	P5	P6	P7	1	2	3	4	5	
			PA	PA	PA	PA	PA	PA	PA	U	H	U	U	H	U
										T	T	G	G	T	G
										S	F	F	F	S	F
										R	R	R	R	R	E



CODE	DIM "M" MATING LENGTH	CONTACT TYPE
U	[6.86]	SIGNAL
T	[6.86]	SIGNAL
S	[6.86]	SIGNAL
R	[6.86]	SIGNAL
E	[5.59]	SIGNAL
F	[5.59]	SIGNAL
G	[5.59]	SIGNAL
H	[5.59]	SIGNAL
PA	[N/A]	POWER

mat'l code				SEE NOTE 2		tolerances unless otherwise specified		CUSTOMER		FCI	
ltr	ecn no.	dr	date	linear	0.X ± 0.3	projection		COPY		www.fciconnect.com	
A	DG07-0176	JMG	04/10/07	angles	0.XX ± 0.13	MIM		title		3ACP + 4P + 24S	
				enr	0.XXX ± 0.051	scale		product family		PwrBlade	
				chr	0° + 2°	1:1		size		code	
				appd	JM GUO 04/10/07			dwg no		213	
					RYAN YUAN 04/10/07			51939-286		sheet	
					GARY HSIEH 04/10/07			A		1 of 4	
					JOSEPH HSIA 04/10/07						
sheet index	revision sheet	A 1	A 2	A 3	A 4						

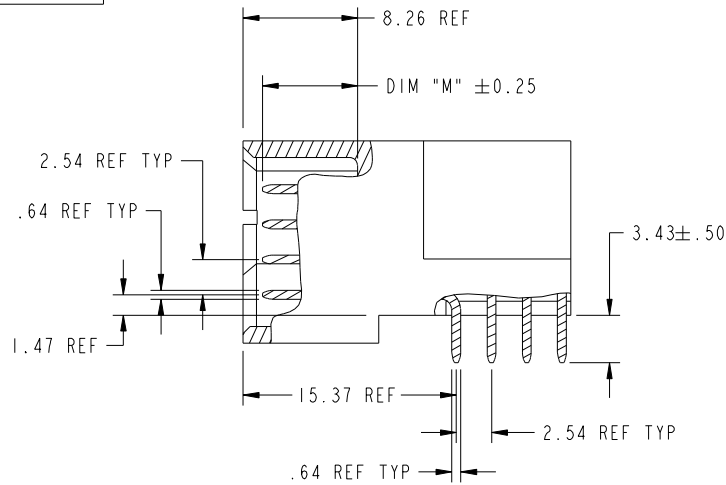
cage code 22526

Tous droits strictement reserves. Reproduction ou communication a des tiers interdite sous quelque forme que ce soit sans autorisation écrite du propriétaire. Propriete de c FCI. Droits de reproduction FCI.

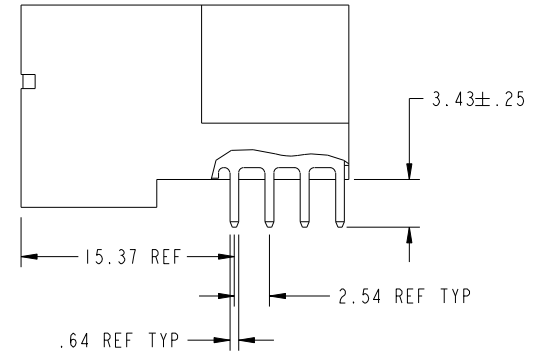
All rights strictly reserved. Reproduction or issue to third parties in any form whatever is not permitted without written authority from the proprietor. Property of FCI. Copyright FCI.



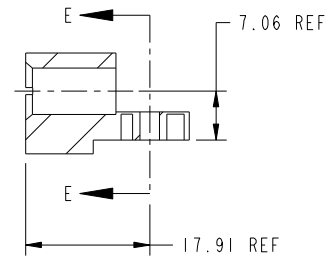
PRODUCT NUMBER  
51939-286--  
NOTE (3)



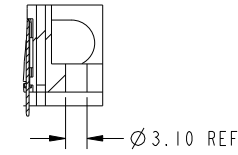
BROKEN-OUT SECTION A-A  
SCALE 2:1



BROKEN-OUT SECTION B-B  
SCALE 2:1



SECTION C-C



PARTIAL SECTION E-E

mat'l code				SEE NOTE 2		tolerances unless otherwise specified		CUSTOMER		FCI	
ltr	ecr no.	dr	date	linear	0.X ±0.3	projection	COPY		www.fciconnect.com		
A					0.XX ±0.13		title		3ACP + 4P + 24S		
				angles	0.XXX ±0.051		RIGHT ANGLE SOLDER HEADER		product family PwrBlade code 213		
				dr	0° ±2°	MIM		size	dwg no	sheet	
				enr	JM GUO 04/10/07	scale		A	51939-286	2 of 4	
				chr	RYAN YUAN 04/10/07	1:1					
				appd	GARY HSIEH 04/10/07						
					JOSEPH HSIA 04/10/07						
sheet index	revision sheet										

cage code 22526

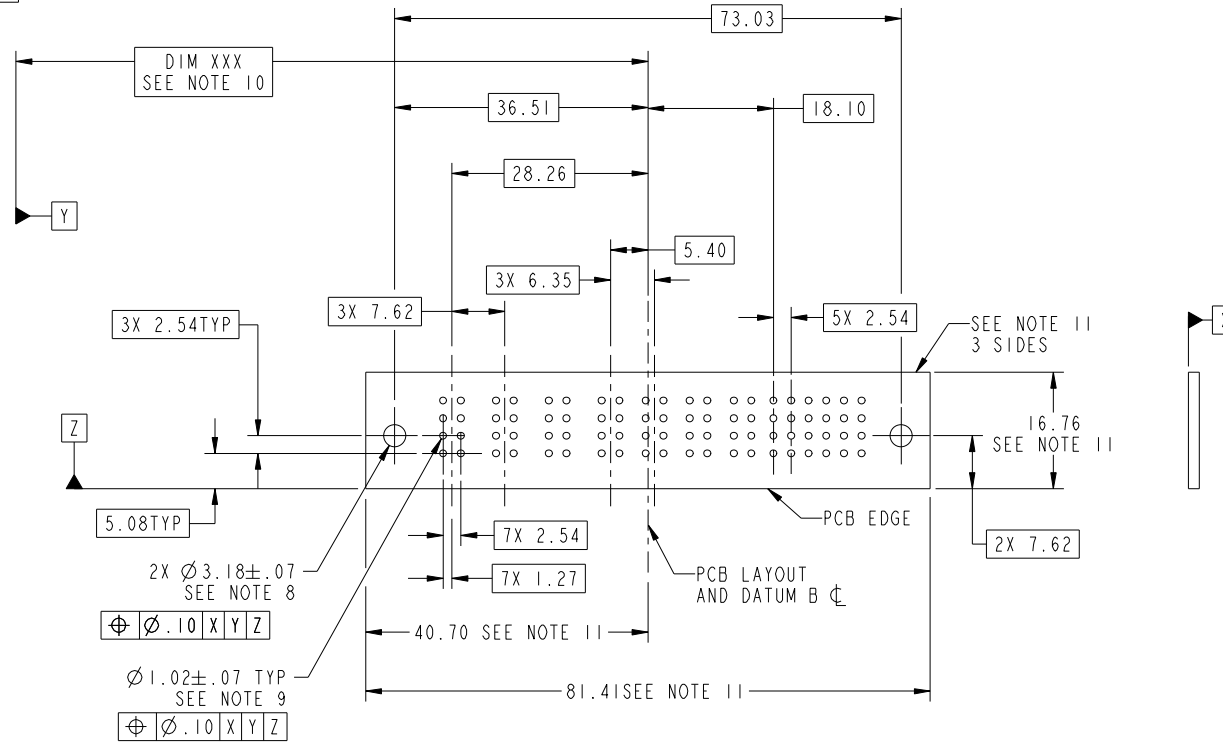
Pro/E

Tous droits strictement reserves. Reproduction ou communication a des tiers interdite sous quelque forme que ce soit sans autorisation écrite du propriétaire. Propriete de c FCI. Droits de reproduction FCI.



All rights strictly reserved. Reproduction or issue to third parties in any form whatever is not permitted without written authority from the proprietor. Property of FCI. Copyright FCI.

PRODUCT NUMBER  
51939-286--  
NOTE ③



RECOMMENDED PCB LAYOUT

mat'l code				SEE NOTE 2		tolerances unless otherwise specified		CUSTOMER		FCI	
ltr	ecn no.	dr	date	linear	0.X ± 0.3		COPY		www.fciconnect.com		
A					0.XX ± 0.13		projection		title 3ACP + 4P + 24S		
					0.XXX ± 0.051				RIGHT ANGLE SOLDER HEADER		
				angles	0° ± 2°				product family PwrBlade		code 213
					dr	JM GUO	04/10/07	scale 1:1		size A	dwg no 51939-286
				enrg	RYAN YUAN	04/10/07					
				chr	GARY HSIEH	04/10/07					
				appd	JOSEPH HSIA	04/10/07					
sheet index	revision sheet										

cage code 22526

Pro/E

Tous droits strictement reserves. Reproduction ou communication a des tiers interdite sous quelque forme que ce soit sans autorisation écrite du propriétaire. Propriete de c FCI. Droits de reproduction FCI.



All rights strictly reserved. Reproduction or issue to third parties in any form whatever is not permitted without written authority from the proprietor. Property of FCI. Copyright FCI.

PRODUCT NUMBER  
51939-286--  
NOTE (3)

NOTES:

1. DIMENSIONS AND TOLERANCES ARE IN ACCORDANCE WITH ASME Y14.5M, 1994 UNLESS OTHERWISE SPECIFIED.

CONNECTOR NOTES:

- (2) HOUSING MATERIAL: UL 94 V-0 GLASS FILLED HIGH-TEMP THERMOPLASTIC  
POWER CONTACT MATERIAL: COPPER ALLOY  
SIGNAL PIN MATERIAL: COPPER ALLOY
- (3) PLATING:  
SEE PRINT 10064183 FOR PLATING SPEC OF 51939-286; 51939-286LF
- (4) MANUFACTURER'S NAME, P/N, AND DATE CODE TO APPEAR ON THIS SURFACE.
- 5. PRODUCT SPECIFICATION GS-12-149.  
APPLICATION SPECIFICATION BUS-20-067.
- 6. PACKAGED IN TRAYS.

PCB NOTES:

- 7. ALL HOLE DIAMETERS ARE FINISHED HOLE SIZE.
- (8) MOUNTING HOLES, WHERE APPLICABLE, ARE UNPLATED.
- (9)  $\varnothing 1.151 \pm 0.025$  DRILLED HOLES PLATED WITH  
0.008 MIN SnPb OVER 0.03  
TO 0.08 Cu PLATING TO ACHIEVE  
 $\varnothing 1.02 \pm 0.07$  HOLE.
- (10) "DIM XXX" TO BE DETERMINED BY THE CUSTOMER.
- (11) CONNECTOR KEEP-OUT ZONE.

mat'l code		SEE NOTE 2		tolerances unless otherwise specified		CUSTOMER		 www.fciconnect.com	
ltr	ecn no.	dr	date	linear	0.X ± 0.3		COPY		 title 3ACP + 4P + 24S RIGHT ANGLE SOLDER HEADER
A					0.XX ± 0.13				
				angles	0.XXX ± 0.051		 product family PwrBlade code 213		
					0° ± 2°		size		
				dr	JM GUO	04/10/07	dwg no		
				enrg	RYAN YUAN	04/10/07	51939-286		
				chr	GARY HSIEH	04/10/07	sheet		
				appd	JOSEPH HSIA	04/10/07	4 of 4		
sheet index		revision sheet		scale		1:1		cage code	
								22526	

Pro/E

cage code 22526