

Description: 1608 UWB Band Pass Filter
Preliminary

PART NUMBER: BPF1608LKAPR6580A

Features:

- Compact Size
- Low loss
- High Soldering Heat Resistance

Applications:

- IEEE, 802.15.4

ELECTRICAL SPECIFICATIONS

ELECTRICAL REQUIREMENTS

Item	Frequency Range(MHz)	Min.	Typ.	Max.
Insertion Loss (dB)	6240~8240	-	1.4	2.2
Insertion Loss (dB) at -40~85°C	6240~8240	-	-	-
Return Loss (dB)	6240~8240	9.54	22.2	-
Attenuation (dB)	2300~3800	38	40.2	-
	5150~5470	16	19.0	-
	5470~5725	6	9.7	-
	5725~5850	3	6.2	-
	5850~5925	1.9	4.4	-
	12500~16500	20	32.3	-
	18700~20000	12	27.6	-
Ripple (dB)	6240~8240	-	0.57	1.5

Operating Temperature Range : -40~85°C

Power Capacity : 3W max.

In the effort to improve our products, we reserve the right to make changes judged to be necessary.

CONFIDENTIAL AND PROPRIETARY INFORMATION

This document contains confidential and proprietary information of Pulse Electronics, Inc. (Pulse) and is protected by copyright, trade secret and other state and federal laws. Its receipt or possession does not convey any rights to reproduce, disclose its contents, or to manufacture, use or sell anything it may describe. Reproduction, disclosure or use without specific written authorization of Pulse is strictly forbidden.

For more information:

Pulse Worldwide Headquarters
 15255 Innovation Drive #100
 San Diego, CA 92128
 USA
 Tel:1-858-674-8100

Pulse/Larsen Antennas
 18110 SE 34th St Bldg 2 Suite 250
 Vancouver, WA 98683
 USA
 Tel: 1-360-944-7551

Europe Headquarters
 Pulse GmbH & Do, KG
 Zeppelinstrasse 15
 Herrenberg, Germany
 Tel: 49 7032 7806 0

Pulse (Suzhou) Wireless Products Co, Inc.
 99 Huo Ju Road(#29 Bldg,4th Phase
 Suzhou New District
 Jiangsu Province, Suzhou 215009 PR China
 Tel: 86 512 6807 9998

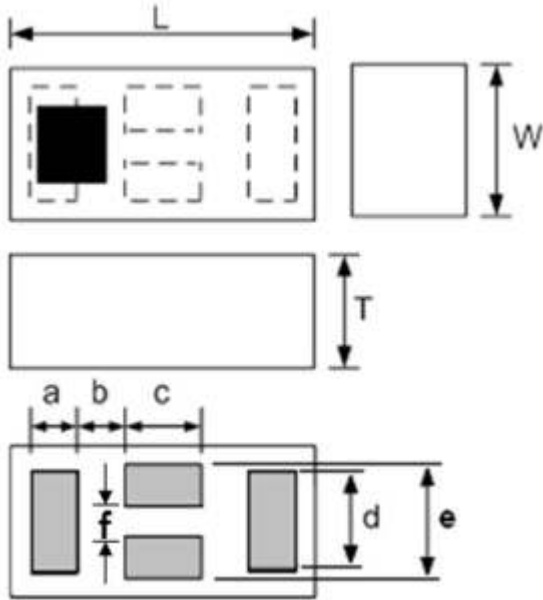


Description: 1608 UWB Band Pass Filter
Preliminary

PART NUMBER: BPF1608LKAPR6580A

MECHANICAL DIMENSION

Outline

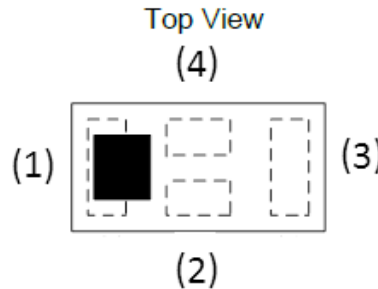


Dimension

L	W	T	a
1.60±0.10	0.80±0.10	0.70±0.10	0.25±0.05
b	c	d	e
0.23±0.05	0.40±0.05	0.55±0.05	0.60±0.05
f			
0.20±0.05			

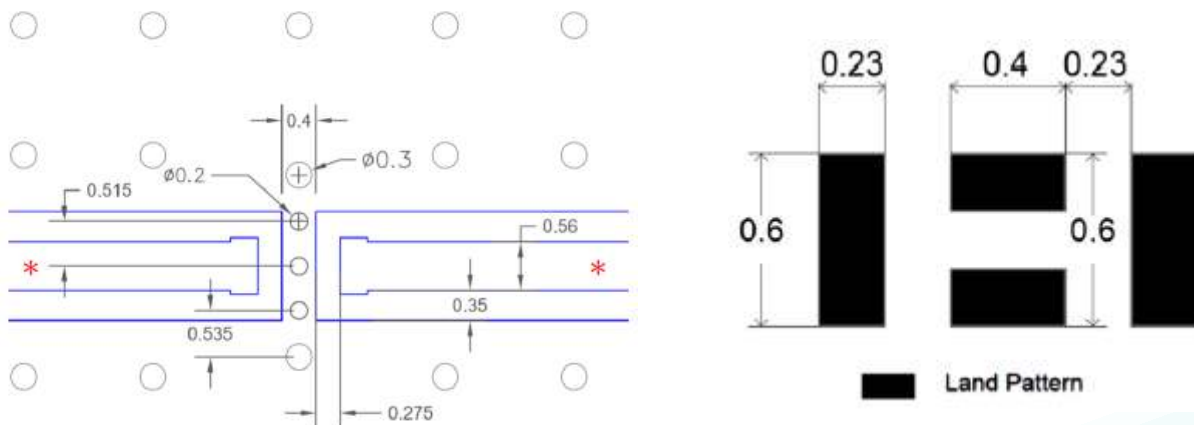
NOTE : Dimensions in mm.

Termination



Terminal name	Function
P1	Input/Output
P2	GND
P3	Input/Output
P4	GND

Reference design of EVB



Unit : mm

Line width should be designed to match 50Ω characteristic impedance, depending on PCB material and thickness.

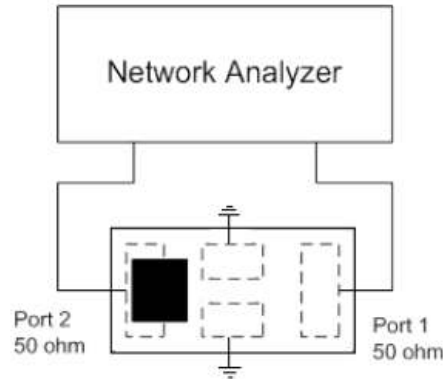
In the effort to improve our products, we reserve the right to make changes judged to be necessary.
CONFIDENTIAL AND PROPRIETARY INFORMATION

This document contains confidential and proprietary information of Pulse Electronics, Inc. (Pulse) and is protected by copyright, trade secret and other state and federal laws. Its receipt or possession does not convey any rights to reproduce, disclose its contents, or to manufacture, use or sell anything it may describe. Reproduction, disclosure or use without specific written authorization of Pulse is strictly forbidden.

Description: 1608 UWB Band Pass Filter
Preliminary

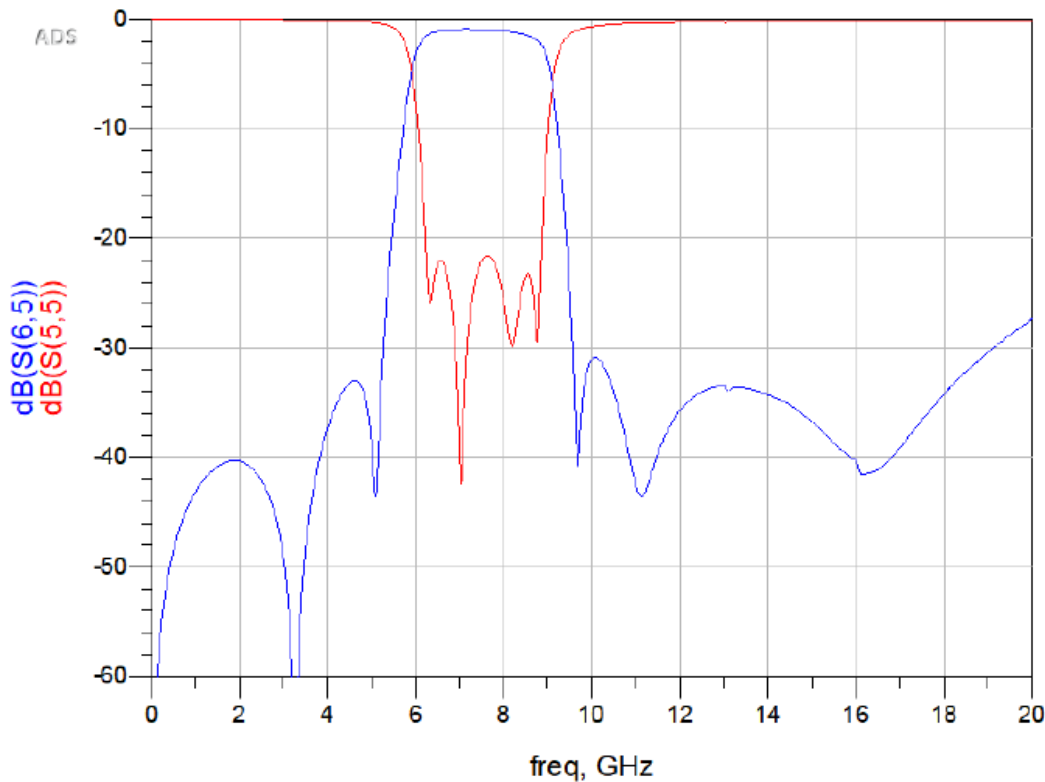
PART NUMBER: BPF1608LKAPR6580A

MEASURING DIAGRAM



Test Instrument :
Agilent E5071A Network
Analyzer.

ELECTRICAL PERFORMANCES



- Measured on Agilent E5071C
Network Analyzer

Frequency Characteristics

In the effort to improve our products, we reserve the right to make changes judged to be necessary.

CONFIDENTIAL AND PROPRIETARY INFORMATION

This document contains confidential and proprietary information of Pulse Electronics, Inc. (Pulse) and is protected by copyright, trade secret and other state and federal laws. Its receipt or possession does not convey any rights to reproduce, disclose its contents, or to manufacture, use or sell anything it may describe. Reproduction, disclosure or use without specific written authorization of Pulse is strictly forbidden.

**Description: 1608 UWB Band Pass Filter
Preliminary****PART NUMBER: BPF1608LKAPR6580A****REVISION HISTORY**

Revision	Date	Description
Version 1	Feb. 24, 2022	- New issue