

2103245-2 ✓ ACTIVE

HVA 280

TE Internal #: 2103245-2

Housing for Female Terminals, Wire-to-Board / Wire-to-Device / Wire-to-Wire, 2 Position, .409 in [10.4 mm] Centerline, Sealable, Orange, HVA 280

[View on TE.com >](#)



Connectors > Automotive Connectors > Automotive Housings



Connector & Housing Type: **Housing for Female Terminals**

Mating Tab Width: **2.8 mm [.11 in]**

Connector System: **Wire-to-Board, Wire-to-Device, Wire-to-Wire**

Number of Positions: **2**

Centerline (Pitch): **10.4 mm [.409 in]**

Features

Product Type Features

Connector Shape	Rectangular
Connector & Housing Type	Housing for Female Terminals
Connector System	Wire-to-Board, Wire-to-Device, Wire-to-Wire
Sealable	Yes
Hybrid Connector	No
Primary Locking Feature	On the Terminal

Configuration Features

Number of Positions	2
Number of Rows	1

Electrical Characteristics

Operating Voltage	600 VDC
Nominal Voltage Architecture	12 V, 24 V, 42 V, 48 V, 80 V, 90 V, 125 V, 240 V, 500 V, 550 V, 600 V

Body Features

Cable Exit Angle	180°
Primary Product Color	Orange
Connector & Keying Code	B

Contact Features



Contact Type	Receptacle
Mating Tab Width	2.8 mm[.11 in]

Mechanical Attachment

Terminal Position Assurance	No
Strain Relief	Without
Mating Alignment Type	Keyed
Mating Alignment	With
Connector Mounting Type	Cable Mount (Free-Hanging)

Housing Features

Housing Material	PA GF
Centerline (Pitch)	10.4 mm[.409 in]

Dimensions

Connector Height	12.6 mm[.496 in]
Product Width	32.4 mm[1.276 in]
Product Length	22.4 mm[.882 in]

Usage Conditions

Operating Temperature (Max)	70 °C, 75 °C, 80 °C, 85 °C, 90 °C, 100 °C, 105 °C, 110 °C, 120 °C, 125 °C[158 °F][167 °F][176 °F][185 °F][194 °F][212 °F][221 °F][230 °F][248 °F][257 °F]
Operating Temperature Range	-40 – 125 °C[-40 – 257 °F]

Operation/Application

Circuit Application	Signal
---------------------	--------

Industry Standards

Degree of Protection	IP6K9K
UL Flammability Rating	UL 94HB

Other

Serviceable	No
Connector Position Assurance Capable	No

Product Compliance

[For compliance documentation, visit the product page on TE.com>](#)

EU RoHS Directive 2011/65/EU	Compliant
------------------------------	-----------

EU ELV Directive 2000/53/EC	Compliant
China RoHS 2 Directive MIIT Order No 32, 2016	No Restricted Materials Above Threshold
EU REACH Regulation (EC) No. 1907/2006	Current ECHA Candidate List: JUNE 2023 (235) Candidate List Declared Against: JUNE 2023 (235) Does not contain REACH SVHC
Halogen Content	Low Bromine/Chlorine - Br and Cl < 900 ppm per homogenous material. Also BFR /CFR/PVC Free
Solder Process Capability	Not reviewed for solder process capability

Product Compliance Disclaimer

This information is provided based on reasonable inquiry of our suppliers and represents our current actual knowledge based on the information they provided. This information is subject to change. The part numbers that TE has identified as EU RoHS compliant have a maximum concentration of 0.1% by weight in homogenous materials for lead, hexavalent chromium, mercury, PBB, PBDE, DBP, BBP, DEHP, DIBP, and 0.01% for cadmium, or qualify for an exemption to these limits as defined in the Annexes of Directive 2011/65/EU (RoHS2). Finished electrical and electronic equipment products will be CE marked as required by Directive 2011/65/EU. Components may not be CE marked. Additionally, the part numbers that TE has identified as EU ELV compliant have a maximum concentration of 0.1% by weight in homogenous materials for lead, hexavalent chromium, and mercury, and 0.01% for cadmium, or qualify for an exemption to these limits as defined in the Annexes of Directive 2000/53/EC (ELV). Regarding the REACH Regulation, the information TE provides on SVHC in articles for this part number is based on the latest European Chemicals Agency (ECHA) 'Guidance on requirements for substances in articles' posted at this URL: <https://echa.europa.eu/guidance-documents/guidance-on-reach>

Compatible Parts




TE Part # 2103247-1
SPLIT HEADER ASSY, KEY A, HVA280

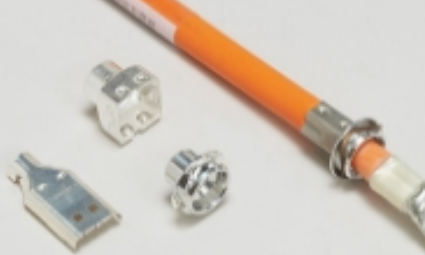


TE Part # 1587733-1
SHIPPING CAP, CAP, HVA280-3PM


Also in the Series | HVA 280




Automotive Connector Caps & Covers (5)



Automotive Connector EMC Shielding (15)



Automotive Housings(77)



Connector Seals & Cavity Plugs(8)



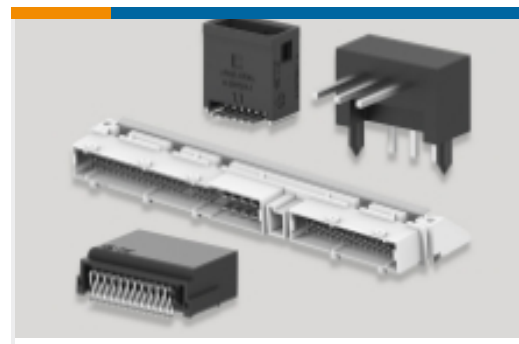
Electric, Hybrid & Fuel Cell Cable Assemblies(6)



High Voltage Wire Processing Equipment(7)



Other Automotive Connector Accessories(37)



PCB Headers & Receptacles(37)

Customers Also Bought



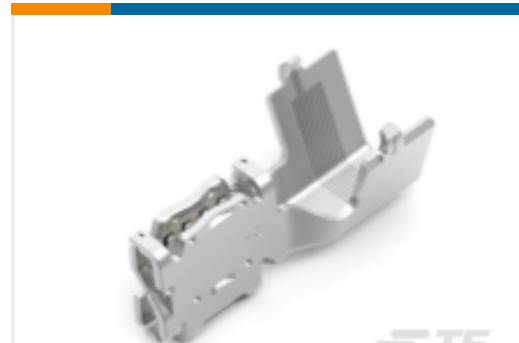
TE Part #2103124-2
HVA280 2P HEADER ASSY, KEY B



TE Part #2-2141600-2
TAB 2.8x0.8 CONTACT CF SRC Ag



TE Part #2103245-1
Inner Housing, Split Hdr, Key A, HVA280



TE Part #2317017-2
PCON 21, TERMINAL, UNSLD, CB, 90DEG



TE Part #2322948-1
6POS, MQS, REC HSG, UNSLD



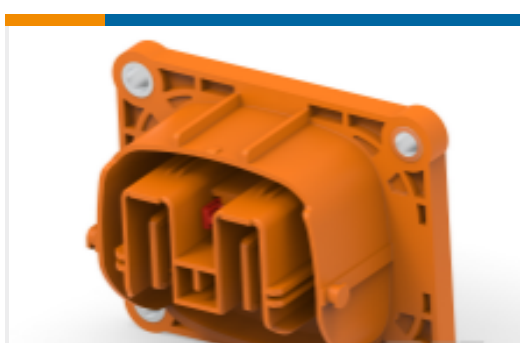
TE Part #2322948-2
6POS, MQS, REC HSG, UNSLD



TE Part #1-2103346-2
HVA280 2 Bay Header Sub-Assy, KEY D, F



TE Part #2310541-2
SPLIT HEADER ASSY, KEY B, HVA280, V0



TE Part #2340465-1
2POS, PCON21, HDR OUTER HSG ASSY, COD A



TE Part #2408874-1
2POS, HYBRID, HDR ASSY, 180DEG, COD A, CMA2.0

Documents

Product Drawings

Inner Housing, Split Hdr, Key B, HVA280

English

CAD Files

3D PDF

3D

Customer View Model

ENG_CVM_CVM_2103245-2_A.2d_dxf.zip



English

Customer View Model

[ENG_CVM_CVM_2103245-2_A.3d_igs.zip](#)

English

Customer View Model

[ENG_CVM_CVM_2103245-2_A.3d_stp.zip](#)

English

By downloading the CAD file I accept and agree to the [Terms and Conditions](#) of use.

Instruction Sheets

[Instruction Sheet \(U.S.\)](#)

English