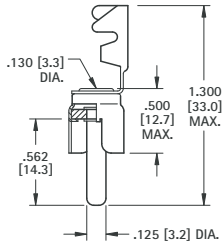


PHONO PLUGS

• Mates with .125 (3.2) diameter jacks

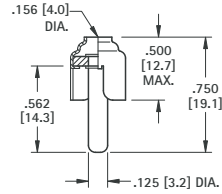
STRAIN RELIEF LUG CRIMPS TO WIRE INSULATION



MATERIAL:
Shell: Steel, Tin Plate
Pin: Brass, Nickel Plate

CAT. NO. 565

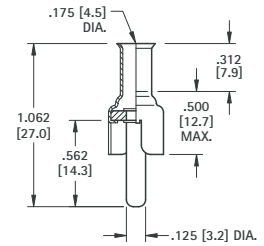
CONVENTIONAL TYPE



MATERIAL:
Shell: Brass, Nickel Plate
Pin: Brass, Nickel Plate

CAT. NO. 561

CRIMP OR SOLDER TYPE EXTRA LONG HANDLE



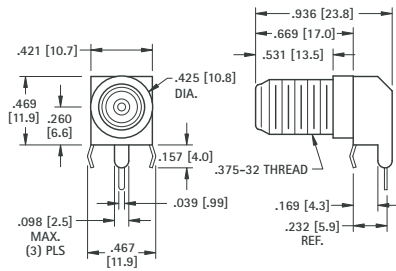
MATERIAL:
Shell: Steel, Tin Plate
Pin: Brass, Nickel Plate

CAT. NO. 567

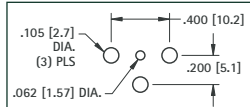
"F" FEMALE CONNECTOR

SNAP-FIT PC MOUNT

- Low profile
- Snap-fit mounting for positive retention during wave soldering
- Rugged, stable construction facilitates reliable mating
- High reliability, manufactured using Nickel Plated Brass bodies and Tin Plated Phosphor Bronze contacts
- Supplied with washer and nut



Mounting Detail



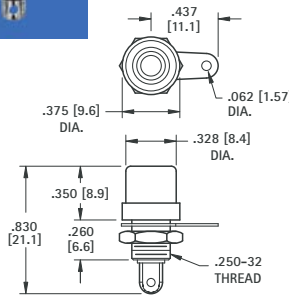
MATERIAL:
Shell: Steel, Tin Plate
Body: Brass, Nickel Plate
Contacts: Brass, Tin Plate

CAT. NO. 911

PANEL MOUNT PHONO JACKS

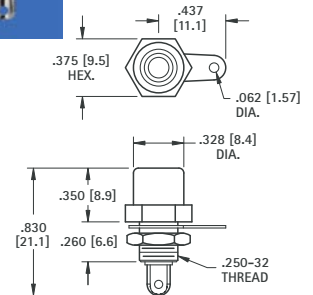
- Mates with .125 (3.12) dia. pin
- Mounts to panel in .296 (7.6) dia. hole
- Color coded for ease of identification
- Complete with nut and solder lug

ROUND BASE



CAT. NO.	INSULATOR COLOR
598	WHITE
580	RED
574	BLACK
599	YELLOW

HEX BASE

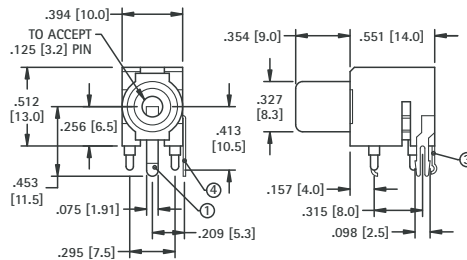
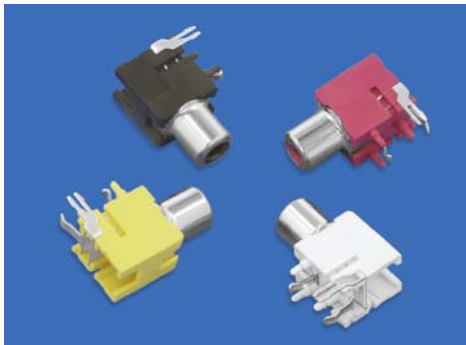


CAT. NO.	INSULATOR COLOR
581	WHITE
582	RED
576	BLACK
583	YELLOW

MATERIAL:
 Brass, Nickel Plate

COLOR KEYED - PC PHONO JACKS

- Mates with .125 (3.2) diameter pins
- Features a normally closed circuit
- Various colors for circuit identification
- Snap-fit mounting for positive retention during wave soldering



CAT. NO.	INSULATOR COLOR
970	WHITE
971	RED
972	BLACK
973	YELLOW

SPECIFICATIONS

Housing: PBT
Ground Terminal: .020 (.51) Brass, Nickel Plate ①
Spring Contact: .012 (.30) Phosphor Bronze, Silver Plate ③
Shunt Terminal: .016 (.41) thick Brass, Silver Plate ④

SCHEMATIC



Mounting Detail

