

RJ45 coupling - VS-08-KU-IP67 - 1689268

Please be informed that the data shown in this PDF Document is generated from our Online Catalog. Please find the complete data in the user's documentation. Our General Terms of Use for Downloads are valid (<http://download.phoenixcontact.com>)



RJ45 coupling, IP67, CAT5e, with protective cover, color: gray



Key commercial data

Packing unit	1
Minimum order quantity	1
Catalog page	Page 329 (PC-2011)
GTIN	 4 017918 938185
Custom tariff number	85366990
Country of origin	GERMANY

Technical data

Mechanical characteristics

Number of positions	8
Connection profile	RJ45 8(8)
Insertion/withdrawal cycles	≥ 750
Cable exit	Straight
Color	gray
Ambient temperature (operation)	-10 °C ... 60 °C
Ambient temperature (storage/transport)	-40 °C ... 70 °C

Material data

Inflammability class according to UL 94	V0
Housing material	PBT
Contact carrier material	Thermoplastic
Contact material	Copper alloy
Contact surface material	Gold over nickel
Sealing material	NBR
Seal material	NBR
Degree of protection	IP67

RJ45 coupling - VS-08-KU-IP67 - 1689268

Technical data

Electrical characteristics

Number of positions	8
Transmission characteristics (category)	CAT5 (IEC 11801:2002), CAT5e (TIA 568B:2001)
Rated current	1 A
Surge voltage category	I
Pollution degree	1

Classifications

eclass

eCl@ss 4.0	27140816
eCl@ss 4.1	27260701
eCl@ss 5.0	27260701
eCl@ss 5.1	27260701
eCl@ss 6.0	27261203
eCl@ss 7.0	27440202

etim

ETIM 2.0	EC000437
ETIM 3.0	EC000437
ETIM 4.0	EC000437
ETIM 5.0	EC001121

unspsc

UNSPSC 6.01	31261501
UNSPSC 7.0901	31261501
UNSPSC 11	31261501
UNSPSC 12.01	31261501
UNSPSC 13.2	31261501

Approvals

Approvals

Approvals

UL Recognized / cUL Recognized / cULus Recognized

Ex Approvals

Approvals submitted

RJ45 coupling - VS-08-KU-IP67 - 1689268

Approvals

Approval details

UL Recognized	
Nominal current I _N	1.75 A
Nominal voltage U _N	50 V

cUL Recognized	
Nominal current I _N	1.75 A
Nominal voltage U _N	50 V

cULus Recognized	
------------------	--

Accessories

Accessories

Protective covers

Protective covers - VS-08-SD-F - 1652606

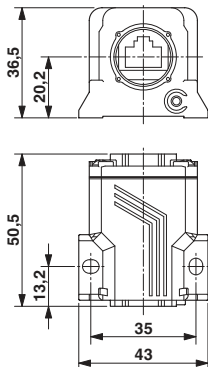
Protective cover, IP67, flat design, to cover the contact insert in the panel mounting frame, color: gray



Drawings

RJ45 coupling - VS-08-KU-IP67 - 1689268

Dimensioned drawing



RJ45 coupling

© Phoenix Contact 2012 - all rights reserved
<http://www.phoenixcontact.com>