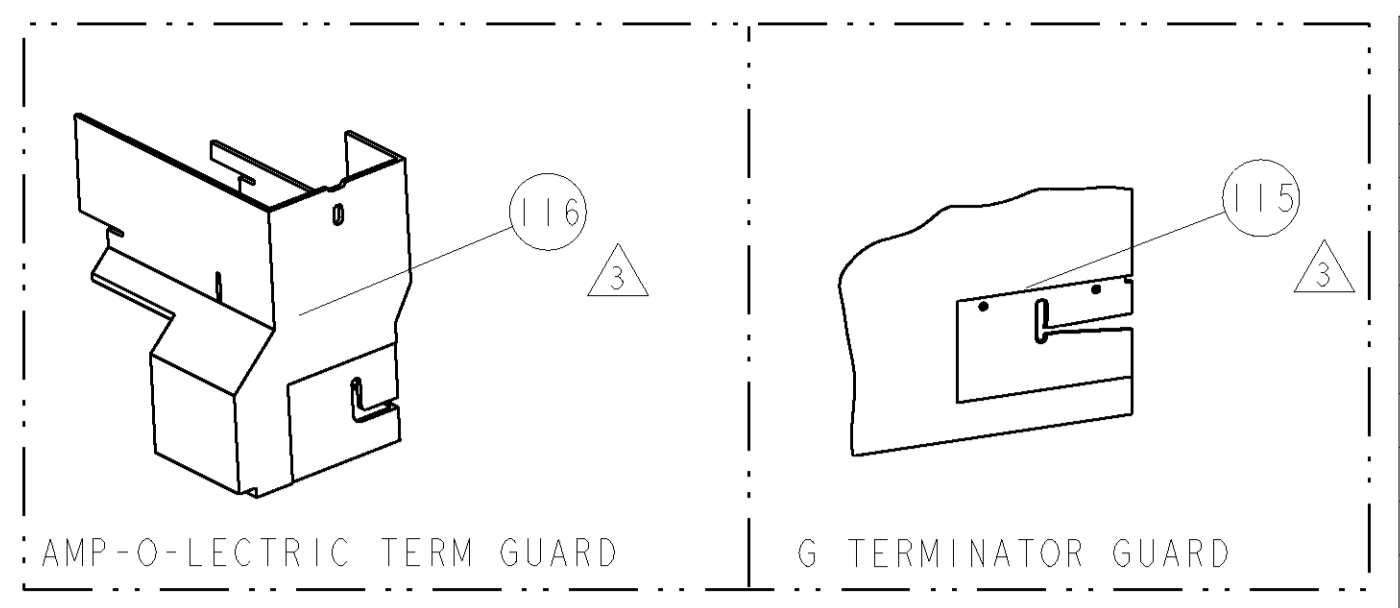


PART NUMBER	REV	FIRST USED	POWER UNIT	FEED TYPE	DESCRIPTION
1855257-1	B	122500-1	LEADMAKER	AIR FEED	CUTS CARRIER
1855257-2	B	565435-5	BENCH MODEL K	AIR FEED	CUTS CARRIER
1855257-3	B	354500-1	BENCH MODEL G	AIR FEED	CUTS CARRIER
7-1855257-7	A	-	-	-	SPARE PARTS



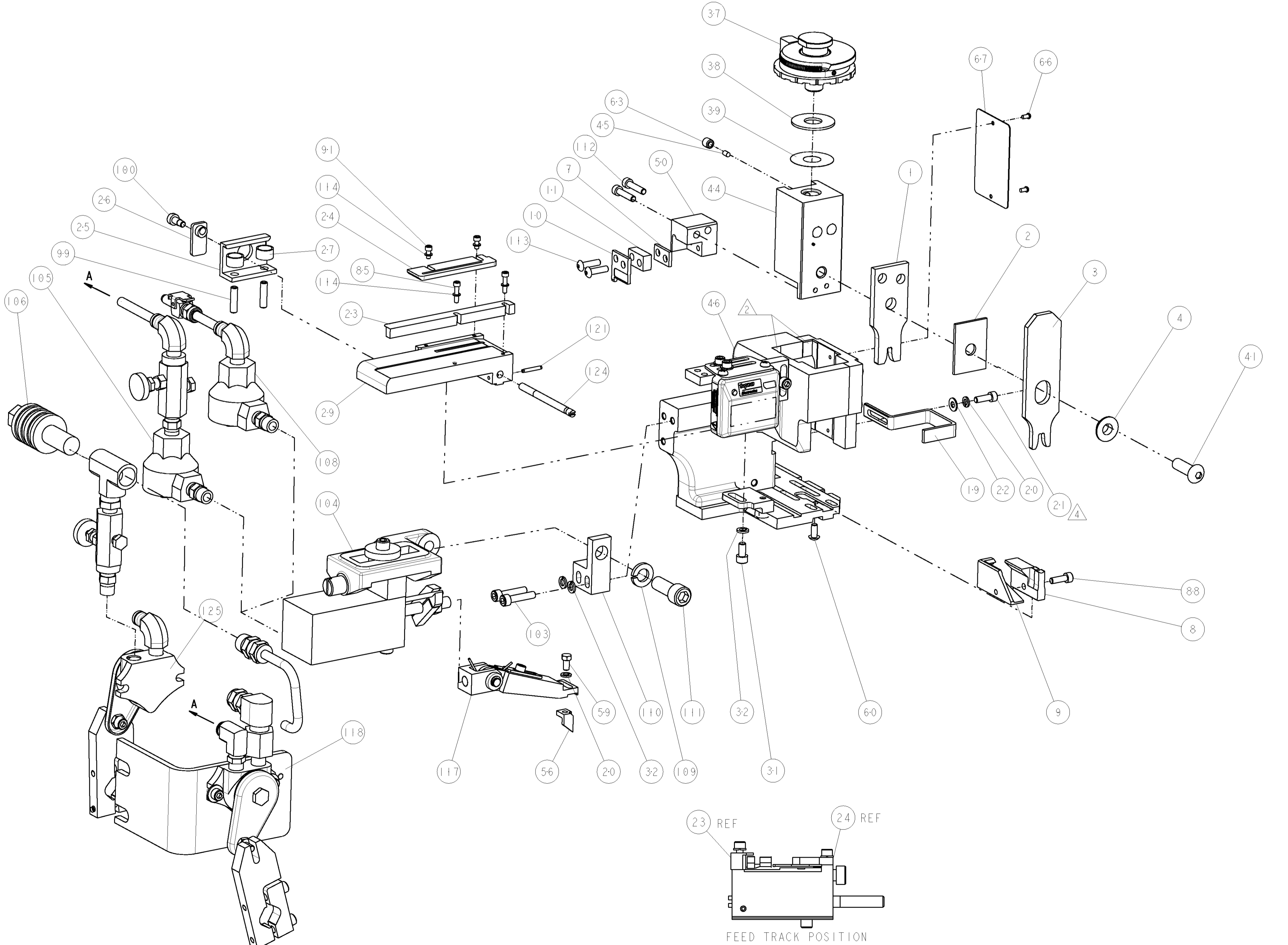
TERMINAL NAME: TAXI TERMINAL, RING STR

TYCO PN	MANUF PN	PACKARD TERM - PACKARD CRIMP SPECS		
1949336-1	12015907			
-	-	CRIMP HEIGHT	WIRE SIZE	REF SETTING
-	-	2.25±0.05mm [.089±.002]	2mm2	B5
-	-	2.10±0.05mm [.083±.002]	1mm2	C5
-	-	-	-	-
-	-	-	-	-
-	-	CRIMP	SIZE	TYPE
-	-	WIRE	3.68mm [.145]	F
-	-	INSUL	5.08mm [.200]	F
-	-		Ø3.97 mm MAX	
WIRE STRIP LENGTH	TERM APPL SPEC	FEED	APPLICATOR INSTRUCTIONS	SET UP GAGE
8.1mm	NONE	19.86mm	408-8040	458637-1

LOC	DIST	REVISIONS					
A	66	P	LTR	DESCRIPTION	DATE	DM	APPR
		A		RELEASED	10JUL2007	BH	BH
		B		ECR-08-031547	11DEC2008	DM	GB

- ▲ RECOMMENDED SPARE PARTS
- ▲ GREASE LIGHTLY
- ▲ GUARD MUST BE IN PLACE WHEN OPERATING APPLICATOR IN A BENCH MACHINE
- ▲ INSTALL ITEMS 101, 102 & 119 ON SIDE OF STRIPPER ON APPL HOUSING USING ITEM 21.

*** WARNING**
ON INSTALLATION, SET WIRE DISC TO LARGEST WIRE SIZE SETTING. USE OF SETTINGS BELOW MIN. REQUIRED CRIMP HEIGHT SETTING WILL CAUSE DAMAGE TO CRIMP TOOLING.



-	-	1	-	-	455350-4	AIR BLAST ASS'Y	125
-	-	1	1	1	690432-3	ADJUSTMENT SCREW	124
-	-	1	1	1	3-21028-8	PIN, SLOTTED SPRING .094 X .625	121
-	18	24	18	IN	27319-4	TUBING, POLY-FLO, NATURAL	119
-	-	1	-	-	692655-6	AIR FEED VALVE ASSEMBLY	118
-	-	1	1	1	461062-1	FEED FINGER ASSEMBLY	117
-	-	REF	-	-	455749-1	GUARD WINDOW	116
-	REF	-	-	-	679532-1	INSERT, GUARD	115
-	4	4	4	-	21024-2	WASHER, SPRG LOCK, REG NO 4	114
-	2	2	2	-	2-21002-3	SCR, BTN SKT HD CAP 8-32 X .625	113
-	2	2	2	-	2-21000-9	SCR, SKT HD CAP 8-32 X .750	112
-	1	1	1	-	3-21001-5	SCR, SKT HD CAP 3/8-16 X 1.000	111
-	1	1	1	-	459610-1	MOUNT, FEED BRACKET	110
-	1	1	1	-	21024-8	WASHER, SPRG LOCK, REG 3/8	109
-	1	-	1	-	692655-7	AIR FEED VALVE ASSEMBLY	108
-	-	1	-	-	24042-2	VALVE, SLEEVE, 3-WAY	106
-	-	1	-	-	692655-5	AIR FEED VALVE ASSEMBLY	105
-	1	1	1	-	461065-1	ASSEMBLY, AIR FEED	104
-	2	2	2	-	3-21000-8	SCR, SKT HD CAP 10-32 X .875	103
-	1	1	1	-	986220-3	CLAMP, CABLE, BLACK	102
-	-	-	-	-	23238-1	INSERT, COUPLING	101
-	1	1	1	-	22353-8	SCR, SHLD, SLOT HD, 3/16 DIA	100
-	2	2	2	-	5-21006-6	SCR, SET, CUP POINT 10-32 X .750	99
-	2	2	2	-	1-21000-3	SCR, SKT HD CAP 4-40 X .250	91
-	1	1	1	-	2-21000-7	SCR, SKT HD CAP 8-32 X .500	88
-	2	2	2	-	1-21000-5	SCR, SKT HD CAP 4-40 X .500	85
-	1	1	1	-	4088040	SF APPL INST 408-8040	72
-	1	1	1	-	217238-1	GENERAL INSTRUCTION PKG	71
-	1	1	1	-	461264-5	PLATE, IDENTIFICATION	67
-	2	2	2	-	21017-2	SCREW, DRIVE	66
-	1	1	1	-	21009-2	SCR, SET, SELF LOCKING 1/4-20 X .250	63
-	1	1	1	-	22733-8	SCR, BHSC, SELF-LOCKING, 8-32 X .375	60
-	1	1	1	-	2-22603-0	SCR, HEX HD CAP 8-32 X .312	59
-	1	1	1	-	2-694433-8	FEED PAWL	56
-	1	1	1	-	1633513-2	HOLDER, SLUG BLADE	50
-	1	1	1	-	1633399-1	APPL., BASIC AIR FEED SUB ASSY	46
-	1	1	1	-	690191-1	PLUG, NYLON	45
-	1	1	1	-	1-455673-4	RAM, SIDE FEED	44
-	1	1	1	-	7-21002-9	SCR, BTN SKT HD CAP 5/16-24 X 1.00	41
-	1	1	1	-	469367-2	SHIM	39
-	1	1	1	-	1-469367-4	SHIM	38
-	1	1	1	-	879103-3	FINE ADJUST HEAD ASSEMBLY	37
-	3	3	3	-	21024-5	WASHER, SPRG LOCK, REG NO 10	32
-	1	1	1	-	3-21000-4	SCR, SKT HD CAP 10-32 X .375	31
-	1	1	1	-	3-844048-1	PLATE, REAR STRIP GUIDE	29
-	2	2	2	-	22284-1	SPRING, COMPRESSION	27
-	1	1	1	-	356835-1	LEVER, DRAG RELEASE	26
-	1	1	1	-	240792-1	DRAG, TERMINAL	25
-	1	1	1	-	1633497-2	REAR STRIP GUIDE	24
-	1	1	1	-	2-189124-1	GUIDE, FRONT STRIP	23
-	1	1	1	-	21055-6	WASHER, FLAT, REG NO 8	22
-	1	1	1	-	2-21000-7	SCR, SKT HD CAP 8-32 X .500	21
-	2	2	2	-	21024-4	WASHER, SPRG LOCK, REG NO 8	20
-	1	1	1	-	1-458230-8	STRIPPER	19
-	1	1	1	-	2-240641-2	SPACER	11
▲	1	1	1	-	1633512-3	BLADE, SLUG	10
▲	1	1	1	-	1-1633124-0	PLATE, REAR SHEAR	9
▲	1	1	1	-	1-1633507-2	ANVIL, SPECIAL, COMBINATION	8
-	1	1	1	-	240641-9	SPACER	7
-	1	1	1	-	3-238009-3	BLOCK, FL CRIMPER SPACER	4
▲	1	1	1	-	6-1213077-0	CRIMPER, INSULATION PREMIUM	3
▲	1	1	1	-	1-455888-7	SPACER, CRIMPER	2
▲	1	1	1	-	7-1673600-1	CRIMPER, WIRE	1

DIMENSIONS: INCHES		TOLERANCES UNLESS OTHERWISE SPECIFIED:		DWN B. HIGMAN 02JAN2007		APPR B. HIGMAN 02JAN2007		NAME BENCHOFF		 Tyco Electronics Harrisburg, PA 17105-3608		
Ø	PLC	±	.001	PLC	±	.01	PLC	±	.001	PLC	±	.0001
FINISH				MATERIAL				WEIGHT				
CUSTOMER DRAWING				SCALE 3:5				SHEET 1 OF 1				

PRODUCT SPEC: FINE ADJUST SIDE FEED HDM APPLICATOR

SIZE: 00779 C-1855257

CUSTOMER VIEWABLE ASSEMBLY