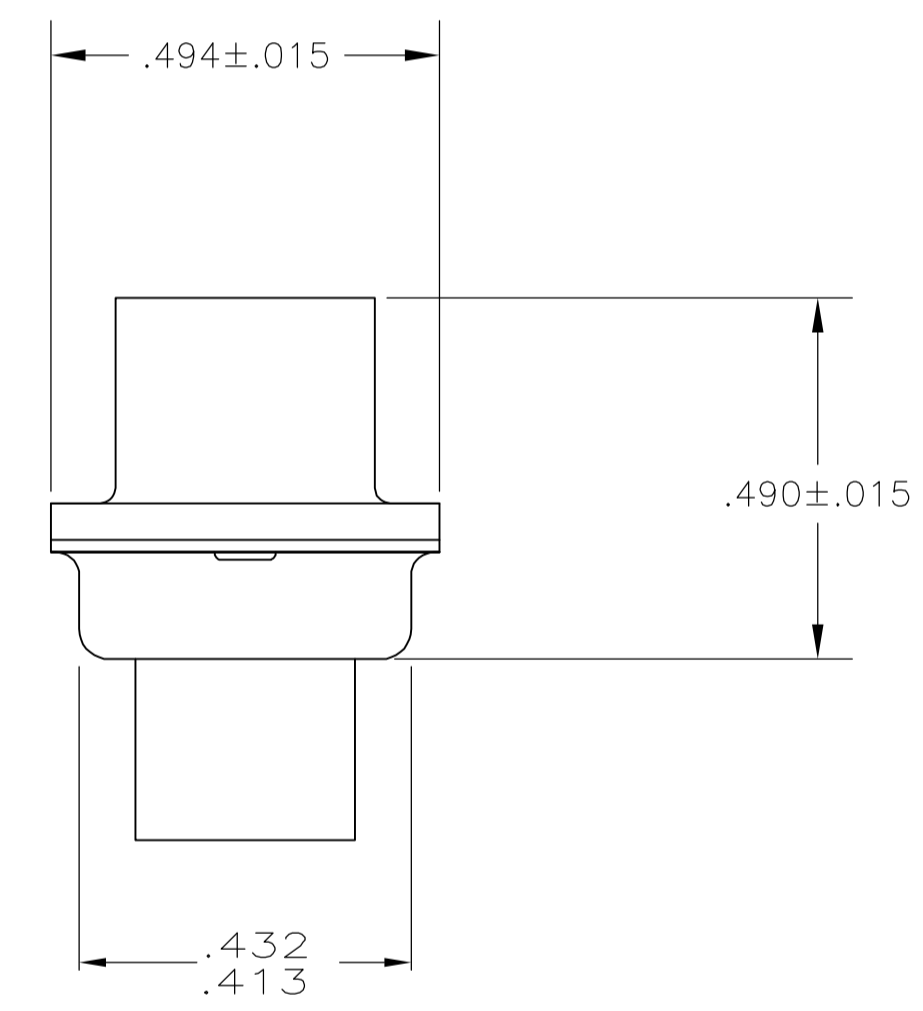
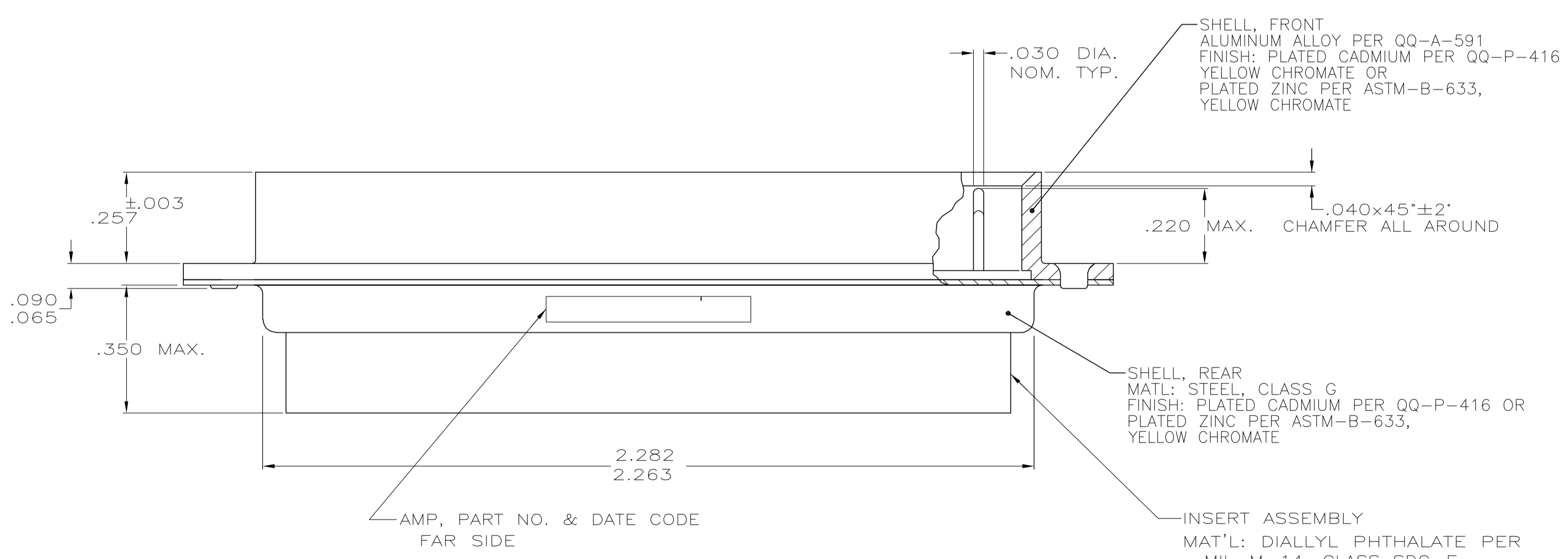
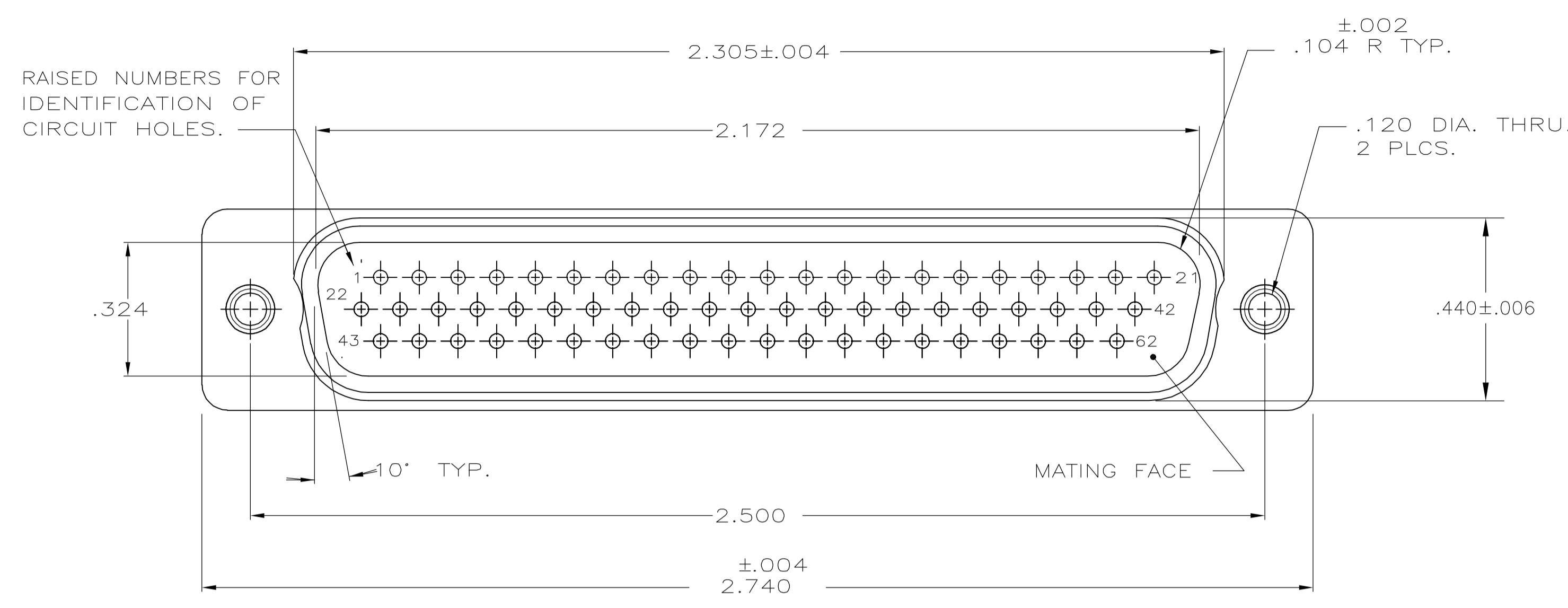


| LOC | | DIST | | REVISIONS | | | |
|-----|------------|--------------|-----|-----------|----|-------|--|
| DF | DO | REV | PER | DATE | BY | APP'D | |
| M | REV PER EC | OH14-0277-05 | | 12JAN06 | BL | CCT | |



1. THIS PLUG WILL MATE WITH ANY 62 POSN., SIZE 4 RECEPTACLE IN AMPLIMITE SERIES.
2. MAXIMUM WIRE INSULATION TO BE USED WITH THIS PLUG IS .054 DIA.
3. SST RETENTION CLIPS ARE INCLUDED IN INSERTS.
4. THIS PLUG IS DESIGNED TO CONFORM TO THE LATEST ISSUE OF MIL-C-24308.
5. CONNECTOR SUPPLIED WITHOUT CONTACTS; SHOWN FOR ILLUSTRATION ONLY.
6. THIS PLUG WILL ACCEPT SIZE 22 DM PIN CONTACT M39029/58-22-22D OR ANY AMP SIZE 22 DF PIN CONTACT.

△ UL/CSA DESIGNATION STAMPED IN THIS AREA.

PRELIMINARY NOT RELEASED FOR PRODUCTION

| SHELL FINISH | DESCRIPTION | PART NUMBER |
|--------------|-------------|-------------|
| ZINC | AS SHOWN | 213118-2 |
| CADMIUM | AS SHOWN | 213118-1 |

| | | | |
|--|--------------------|-----------------------------------|---|
| THIS DRAWING IS A CONTROLLED DOCUMENT. | | DIN D.D.ERDMAN 10-17-85 | Tyco Electronics Corporation Harrisburg, PA 17105-3608 |
| DIMENSIONS: INCHES | | CHK F.C.BALLEW III 10-25-85 | |
| TOLERANCES UNLESS OTHERWISE SPECIFIED: | | APVD | NAME |
| 0 PLC ± - | 1 PLC ± - | PRODUCT SPEC | PLUG ASSY., AMPLIMITE, 62 POSN., SIZE 4, SERIES 90, BLINDMATE |
| 2 PLC ± - | 3 PLC ± .005 | APPLICATION SPEC | |
| 4 PLC ± - | ANGLES ± 0.30° | WEIGHT | RESTRICTED TO |
| MATERIAL SEE CALLOUT | FINISH SEE CALLOUT | SIZE A1 | CAGE CODE 00779 |
| CUSTOMER DRAWING | | DRAWING NO. C=213118 | REV M |
| SCALE 1:1 | | SHEET 1 OF 1 | REV |