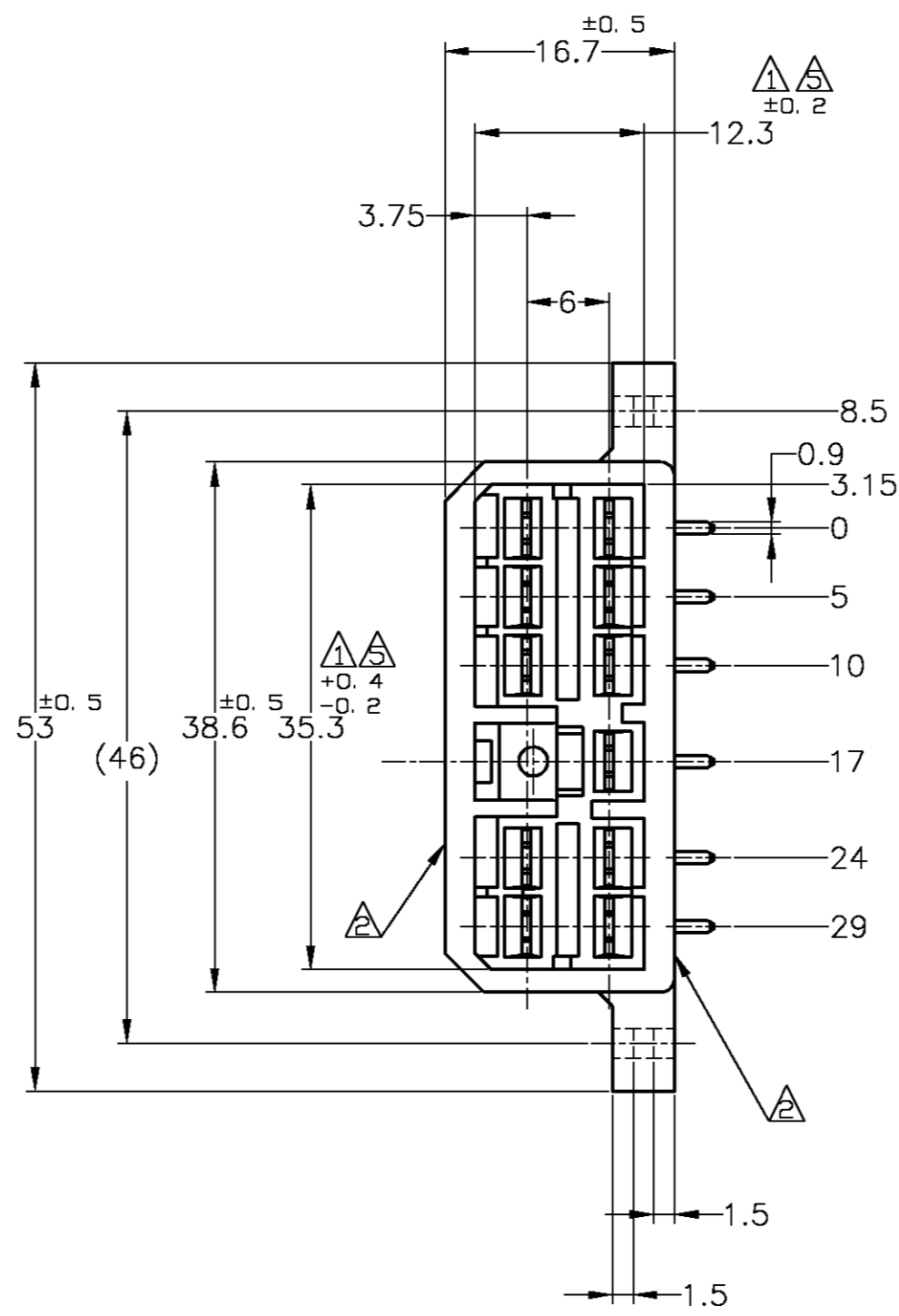
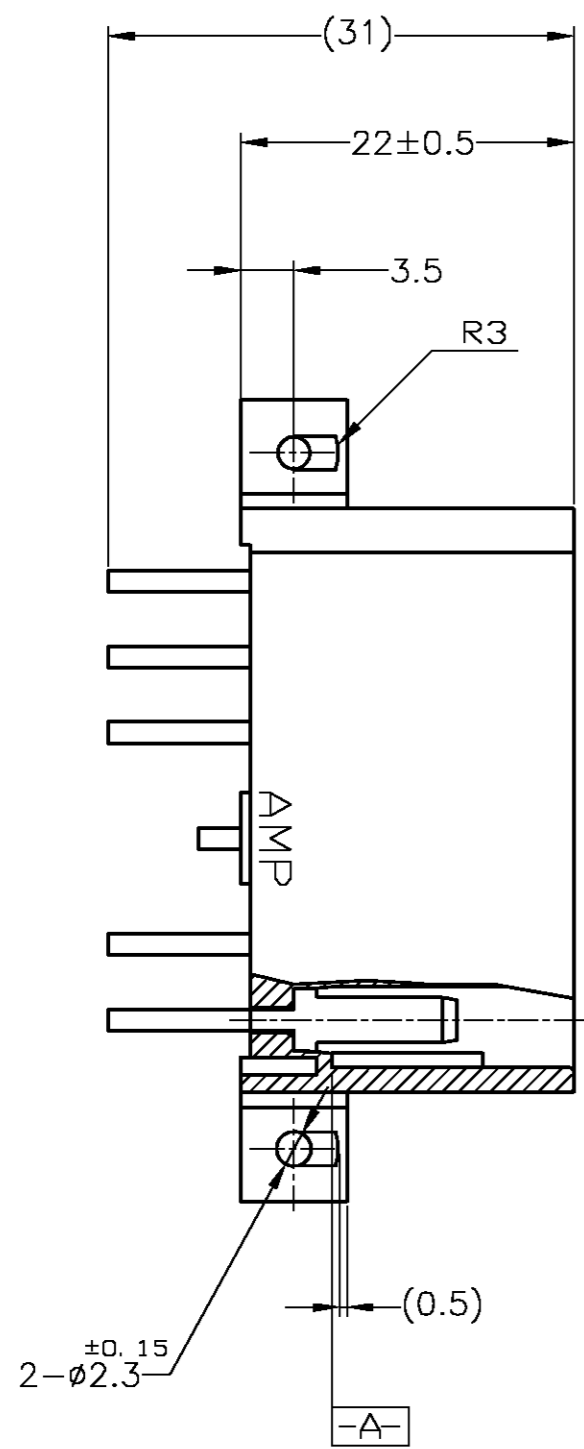


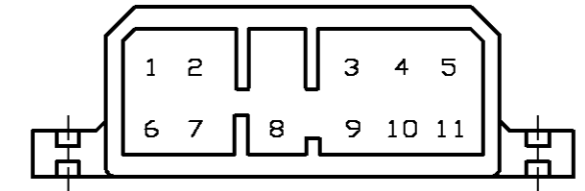
THIS DRAWING IS UNPUBLISHED. RELEASED FOR PUBLICATION
 © COPYRIGHT BY TYCO ELECTRONICS CORPORATION. ALL RIGHTS RESERVED.

LOC	DIST	REVISIONS					
J	-	P	LTR	DESCRIPTION	DATE	DWN	APVD
		G3		REDRAWN W/CHANGE	ECR-07-017829	31AUG07	TS KB



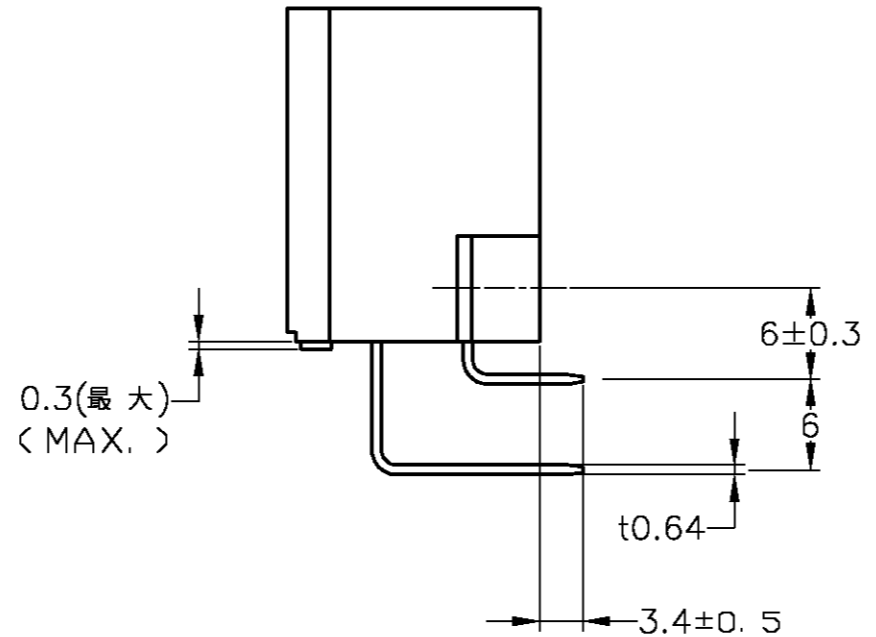
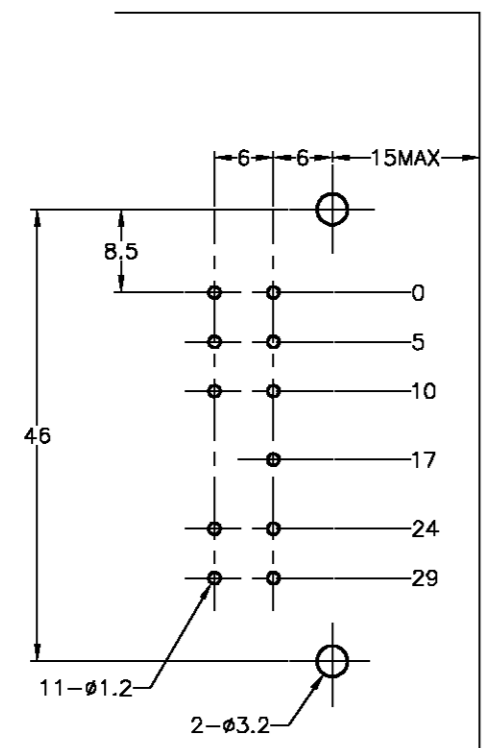
- 注記:
- △ 相手ハウジングと所定の機能を満たしてかん合できること。
 - △ フードの反りは0.2以内。
 - 3 プリント基板への取付けは JIS B1115 M3 1種のタッピングネジで締め付けた後はんだ付けする。
 - 4 適用製品規格; 108-5093
 - △ [-A] 面より2mmの範囲で測定のこと。
 - 6 相手ハウジングとのかん合力は、29.4N以下
但し、リセプタクルコンタクトは含まない。
 - △ 金めっき位置番号: 下図参照のこと。

- NOTE:
- △ IN COUPLING WITH THE PLUG HOUSING MATING SATISFIES FUNCTION
 - △ WARPAGE 0.2 MAX.
 - 3 SOLDERING AFTER MOUNTING P.C. BOARD BY 3mmDIA TAPPING SCREW, SPECIFIED IN JIS B1115
 - 4 PRODUCT SPEC NO. 108-5093
 - △ TO BE MEASURED WITHIN 2mm FROM [-A]
 - 6 IN COUPLING WITH THE PLUG HOUSING MATING FORCE 29.4N MAX. WITHOUT RECEPTACLE CONTACT
 - △ GOLD PLATED POSITION NUMBER.



プリント基板取付寸法図
(MOUNTING DIMENSIONS FOR P.C. BOARD)

1. 板厚, 1.6±0.15
(P.C.B. THICKNESS, 1.6±0.15)
2. 公差, ±0.1
(TOLERANCE, ±0.1)



	1~11	SELECTIVE-TIN (MATTE)	SELECTIVE GOLD (0.38μm MIN.)	NATURAL	2-5172038-1
OBSOLETE	6~11	TIN-LEAD	SELECTIVE GOLD (0.38μm MIN.)	YELLOW	3-172038-7
			PRE-TIN		
OBSOLETE	1~11	TIN-LEAD	SELECTIVE GOLD (0.38μm MIN.)	GREEN	2-172038-4
	1~11	TIN-LEAD	SELECTIVE GOLD (0.38μm MIN.)	NATURAL	2-172038-1
OBSOLETE	1~11	TIN-LEAD	SELECTIVE GOLD (0.76μm MIN.)	GREEN	1-172038-4
OBSOLETE	1~11	TIN-LEAD	SELECTIVE GOLD (0.76μm MIN.)	NATURAL	1-172038-1
OBSOLETE			PRE-TIN	YELLOW	172038-7
OBSOLETE			PRE-TIN	GRAY	172038-6
OBSOLETE			PRE-TIN	BLUE	172038-5
OBSOLETE			PRE-TIN	GREEN	172038-4
OBSOLETE			PRE-TIN	BROWN	172038-3
OBSOLETE			PRE-TIN	BLACK	172038-2
OBSOLETE			PRE-TIN	NATURAL	172038-1
	GOLD PL. POSITION No. 金めっき位置番号	SOLDERING SIDE 半田付け部	CONTACT SIDE 接触部側	COLOR 色	PART NUMBER 製品型番
		CONTACT FINISH コンタクト仕上			

TOLERANCE UNLESS OTHERWISE SPECIFIED:
 一般公差
 0 <= x <= 10 : ±0.2
 10 <= x <= 30 : ±0.25
 30 <= x <= 100 : ±0.3
 ANGLE : ±3°

THIS DRAWING IS A CONTROLLED DOCUMENT.

DWN	T.SHINOHARA	31AUG07
CHK	K.BETSUI	31AUG07
APVD	K.BETSUI	31AUG07

Tyco Electronics Corporation
Kawasaki, Japan

11P HORIZONTAL TYPE CAP HOUSING
MULTI-INTERLOCK CONN.
WIRE TO PCB

SIZE	A2	CAGE CODE	00779	DRAWING NO	172038
WEIGHT	-	SCALE	2:1	SHEET	1 of 1

CUSTOMER DRAWING

172038

B

A