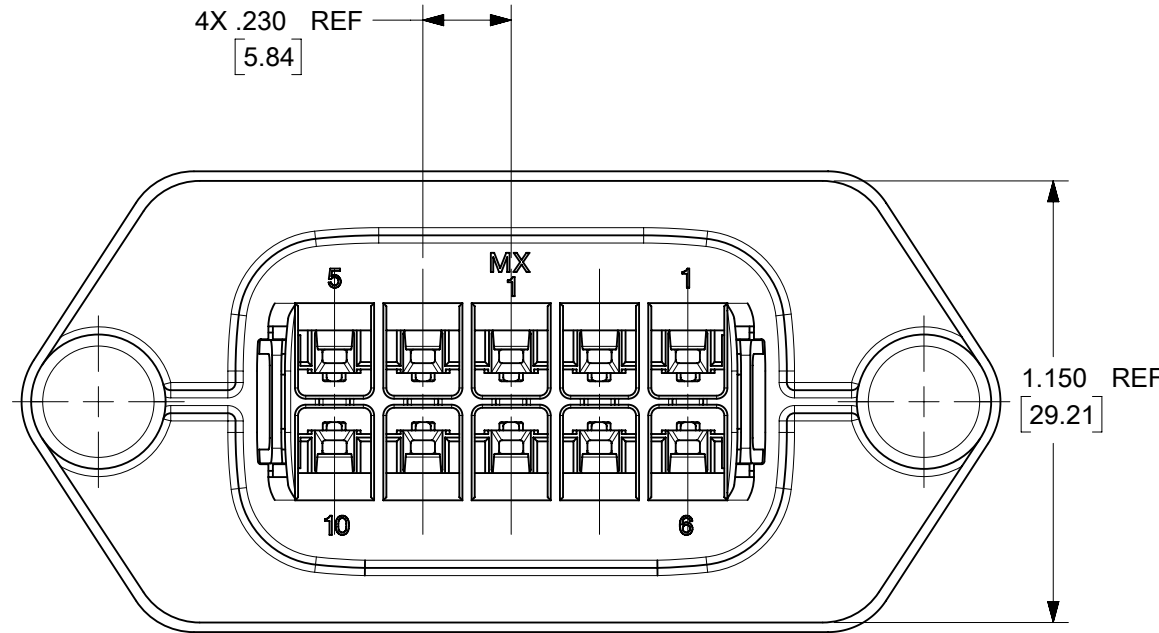
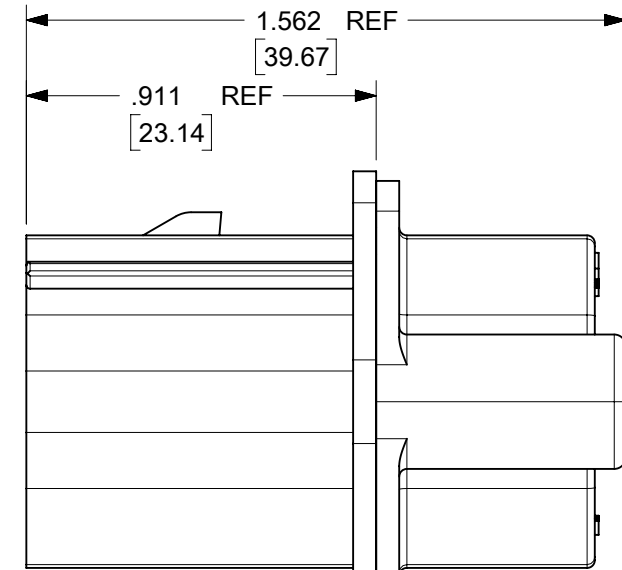
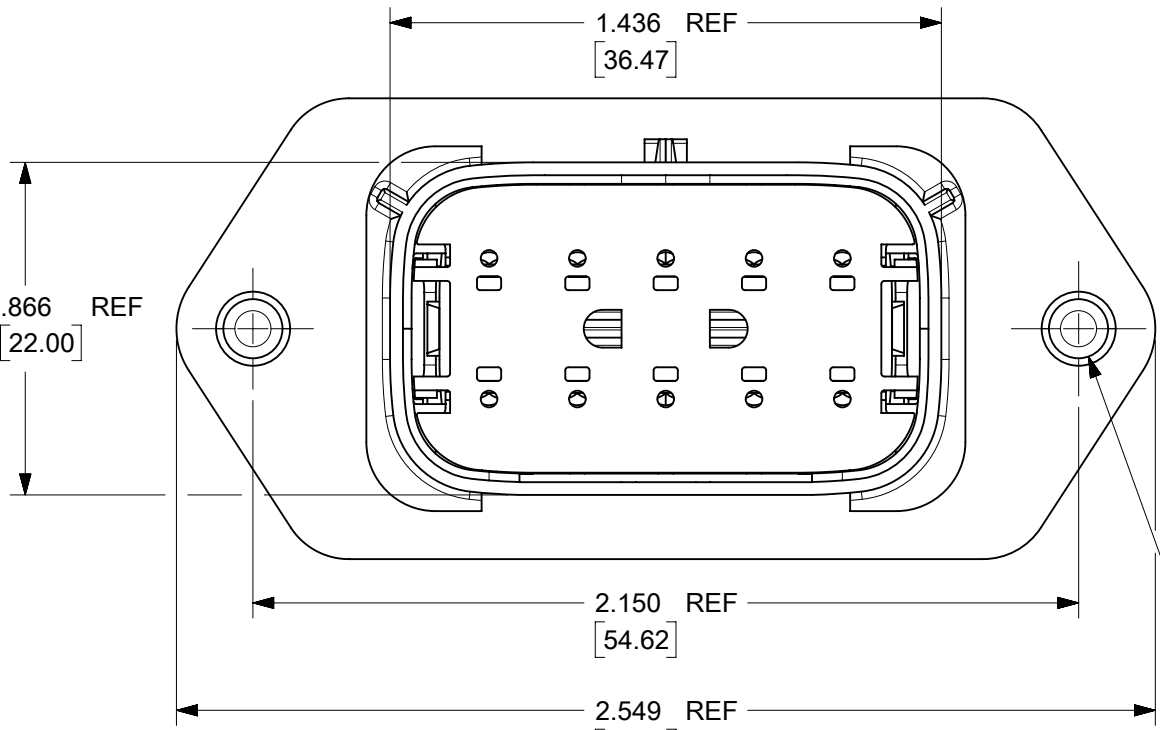


SCALE 1:1

2X Ø .193 [4.90]

RECOMMENDED PANEL MOUNT OPENING
MAX PANEL THK .080/2.03



2X Ø .154 X .030 X 45° CHAM [3.91] REF

- NOTES:
- MATERIALS: **(D)**
HOUSING: SYNDIOTACTIC POLYSTYRENE (SPS), GLASS FILLED, UL94 V-0, COLOR: BLACK
GASKET: EPDM RUBBER
 - PRODUCT SPECIFICATION: PS-19417-001.
 - PACKAGING SPECIFICATION: PK-19429-001.
GASKETS, IF REQUIRED FOR THE ASSEMBLIES, ARE BULK PACKAGED IN A SEPARATE BAG.
 - MATES WITH: 19418 SERIES RECEPTACLE ASSEMBLIES.
 - USE CONNECTOR WITH MALE CRIMP TERMINAL: SERIES 19417.
 - RECOMMENDED MOUNTING HARDWARE: (2)#10 X .62/15.8 LONG PLASTIC THREAD CUTTING SCREWS. RECOMMENDED TORQUE 15-17 IN-LBS.
SUGGESTED SOURCE: ITW SHAKEPROOF INDUSTRIAL BOSSCREW OR EQUIVALENT.
 - ASSEMBLY IS ROHS COMPLIANT.

194290038	YES
194290014	NO
MATERIAL NUMBER	GASKET

THIS DRAWING CONTAINS INFORMATION THAT IS PROPRIETARY TO MOLEX ELECTRONIC TECHNOLOGIES, LLC AND SHOULD NOT BE USED WITHOUT WRITTEN PERMISSION										
FUNCTIONAL SYMBOLS	THIS DRAWING CONTAINS INFORMATION THAT IS PROPRIETARY TO MOLEX ELECTRONIC TECHNOLOGIES, LLC AND SHOULD NOT BE USED WITHOUT WRITTEN PERMISSION	SCALE		CURRENT REV DESC: REDRAWN IN NX & HSG MATERIAL UPDATED						
	in/[mm]	2:1								
DIVISIONAL SYMBOLS	GENERAL TOLERANCES (UNLESS SPECIFIED)									
		MM	INCH							
	4 PLACES	±		EC NO: 690910						
	3 PLACES	±	± 0.015	DRWN: RYM02 2021/12/20						
	2 PLACES	±	± 0.38	CHK'D: DMYRICK 2022/01/05						
	1 PLACE	±		APPR: JMACNEIL 2022/01/06						
	0 PLACES	±		INITIAL REVISION:						
	ANGULAR TOL	±	1.0°	DRWN: DMYRICK 03/11/10						
	DRAFT WHERE APPLICABLE MUST REMAIN WITHIN DIMENSIONS			THIRD ANGLE PROJECTION		DRAWING	SERIES	MATERIAL NUMBER	CUSTOMER	SHEET NUMBER
				B-SIZE		19429	SEE CHART	GENERAL MARKET	1 OF 1	

molex

10 WAY PLUG PANEL MOUNT ASSEMBLY 22-14 AWG

PRODUCT CUSTOMER DRAWING

DOCUMENT NUMBER: SD-19429-004
DOC TYPE: PSD
DOC PART: 001
REVISION: D