

4

3

2

1

THIS DRAWING IS UNPUBLISHED.

RELEASED FOR PUBLICATION

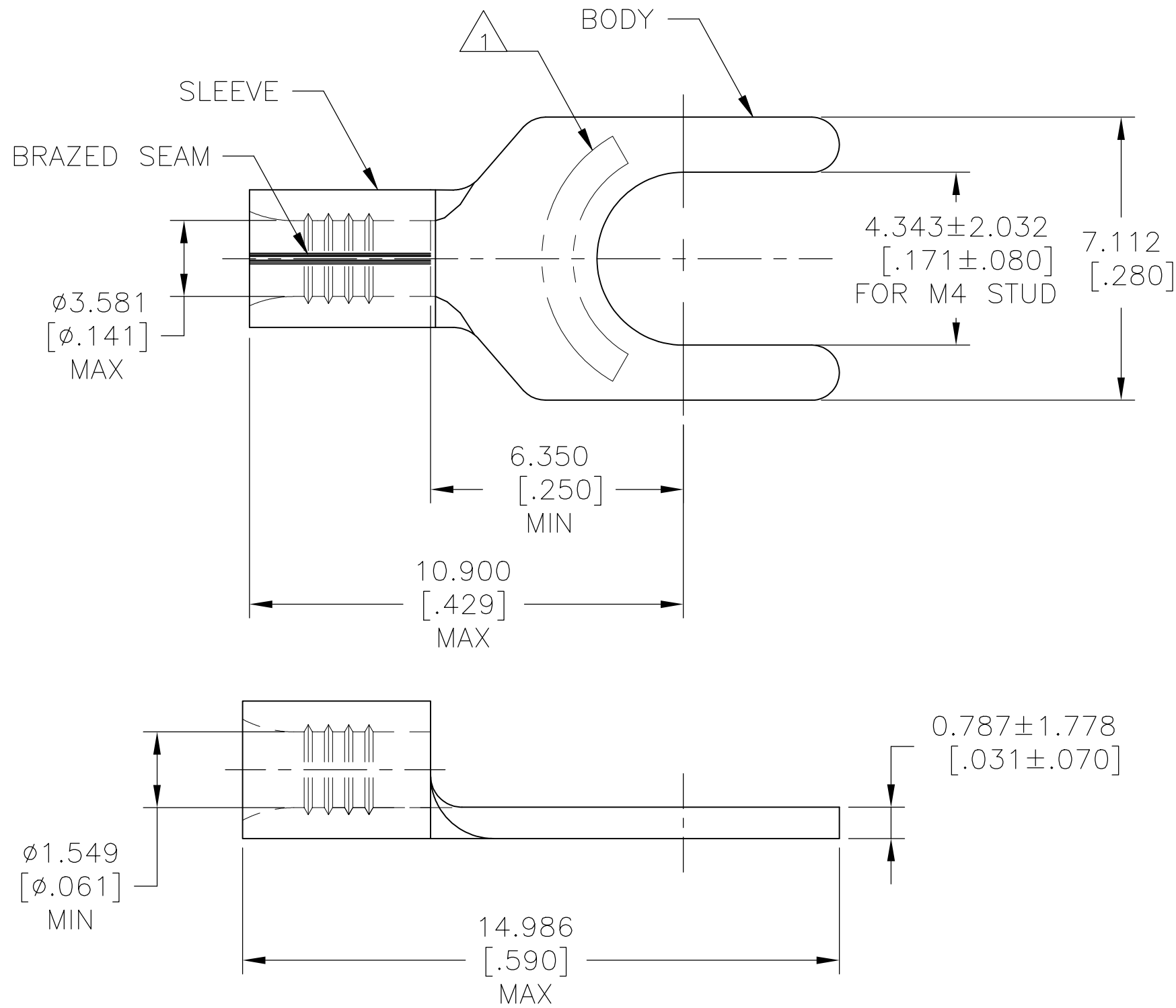
---

REVISIONS

© COPYRIGHT - TE Connectivity Ltd.

ALL RIGHTS RESERVED.

P	LTR	DESCRIPTION	DATE	DWN	APVD
B2		REVISED PER ECO-09-020935	29AUG09	KK	AEG
B3		REVISED PER ECO-17-008806	18APR2018	RS	DR



**AMP**  
WIRE RANGE

22-16 AWG  
SOLID OR STRANDED

1 STAMP "AMP 22-16\*", APPROX AS SHOWN

2 NOTE DELETED

1000	LOOSE PIECE	130519
QTY	PACKAGE TYPE	PART NO

AMP INCORPORATED  
CUSTOMER SERVICE SYSTEMS

MAX RECOMMENDED OPERATING TEMPERATURE:  
170°C [338°F] MAX

THIS DRAWING IS A CONTROLLED DOCUMENT.

DWN JR RUTH 06OCT08

**STE** TE Connectivity Ltd.

FOR ADDITIONAL  
PRODUCT INFORMATION OR  
COPIES OF DRAWINGS  
AND TECHNICAL DOCUMENTS

PRODUCT INFORMATION CENTER  
1-800-522-6752

VOLTAGE RATING:  
---

DIMENSIONS:  
mm [INCHES]

TOLERANCES UNLESS  
OTHERWISE SPECIFIED:

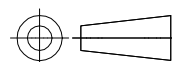
CHK T MICHIELUTTI 06OCT08

APVD T MICHIELUTTI 06OCT08 NAME  
TERMINAL, SPADE TONGUE,  
SOLISTRAND  
WIRE SIZE: 22-16 AWG

FOR APPLICATION  
TOOLING INFORMATION

TOOLING ASSISTANCE CENTER  
1-800-722-1111

CIRCULAR MIL AREA:  
0.26-1.65mm<sup>2</sup> [509-3,260]  
SOLID OR STRANDED



0 PLC ± -  
1 PLC ± -  
2 PLC ± -  
3 PLC ± 0.127[.005]  
4 PLC ± -  
ANGLES ± -

PRODUCT SPEC

APPLICATION SPEC

SIZE CAGE CODE DRAWING NO RESTRICTED TO

FOR ORDER ENTRY 1-800-526-5142

THIS DRAWING IS A CONTROLLED DOCUMENT FOR  
AMP INCORPORATED. IT IS SUBJECT TO CHANGE  
AND THE CONTROLLING ENGINEERING ORGANIZATION  
SHOULD BE CONTACTED FOR THE LATEST REVISION.

MATERIAL COPPER PER ASTM B-152

FINISH TIN PL PER ASTM B545

WEIGHT

A3 00779 C-130519

CUSTOMER DRAWING

SCALE 8:1 SHEET 1 OF 1 REV B3