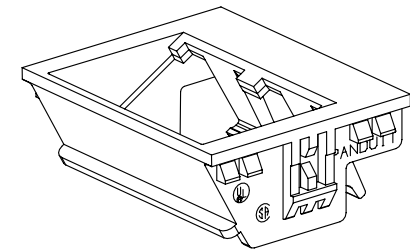
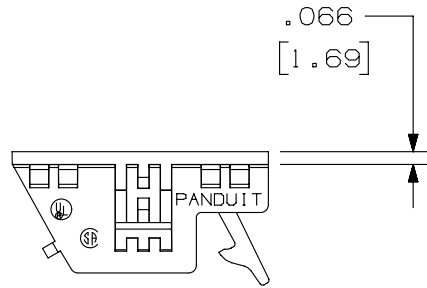
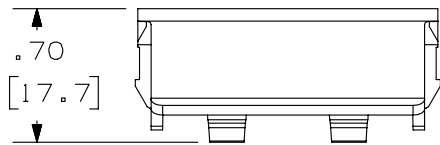
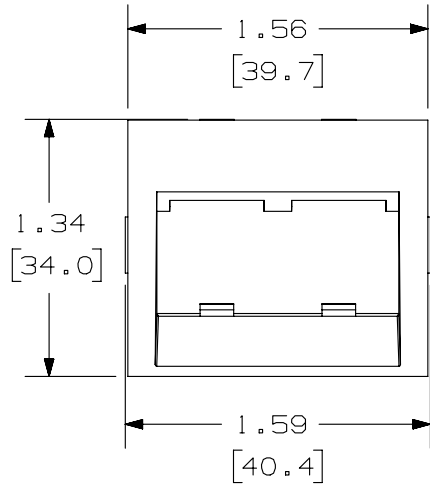


THIS COPY IS PROVIDED ON A RESTRICTED BASIS AND IS NOT TO BE USED IN ANY WAY DETRIMENTAL TO THE INTERESTS OF PANDUIT CORP.



PANDUIT P/N	WEIGHT
CHSRE2** -X	.10 LB/10 PCS (44 g/10 PCS)

NOTES:

1. SEE CURRENT CATALOG FOR ADDITIONAL PART NUMBER SUFFIXES TO INDICATE COLOR AND OR PACKAGE QUANTITY.
2. SEE CATALOG FOR COMPLETE LIST OF PARTS APPLICABLE FOR USE WITH THIS PART.
3. DIMENSIONS IN [] ARE IN METRIC.
4. FOR USE WITH ANY MINI-COM BEZEL DESIGNED TO ACCEPT 1/2 SIZE INSERTS.

PART NUMBER		CHSRE2** - X	
TITLE			
MINI-COM 2 POSITION SLOPED 30° RECESSED 1/2 INSERT			
CUSTOMER DRAWING			
ITEM REVISION NAME		M01334BA/00	
DATASET FILE NAME		M01334BA_DC/00B	
UNLESS OTHERWISE SPECIFIED, DIMENSIONAL TOLERANCES ARE: IN [mm]		MATERIAL:	
.x ± .xxx ± .010 [.3]		ABS	
.xx ± .03 [.8]		DRAWING NUMBER:	
THIRD ANGLE PROJECTION		01334-02	
DRAWN BY	DATE	CHK	SCALE
JSP	4-23-02	PBD	NONE
SHT 1 OF 1		SIZE	
A		A	

REV	DATE	BY	CHK	APR	DESCRIPTION	ECN
1	4/23/14	JSP	REFR	MMR	A. REVISED DRAWING TITLE BLOCK.	01334-02
R	4-23-02	JSP	PBD	PBD	RELEASED TO PRODUCTION	01334-02

D101000DA/14

2

1

2

1