

4

3

2

1

THIS DRAWING IS UNPUBLISHED. RELEASED FOR PUBLICATION
© COPYRIGHT ALL RIGHTS RESERVED.

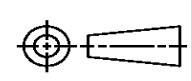
LOC	DIST	REVISIONS			
P	LTR	DESCRIPTION	DATE	DWN	APVD
	A1	ECR-14-003115	03MAR2014	GK	HMR

REPLACED BY OCEAN STYLE APPLICATOR PART NUMBER 2151345-6

FOR REPLACEMENT PARTS FOR APPLICATOR 1911022
REFER TO ADDITIONAL PAGE(S). SPARE PARTS KIT (IF LISTED)
WILL REMAIN AVAILABLE.

THE REPLACEMENT OCEAN STYLE APPLICATOR HAS THE
SAME TERMINATOR/PRESS INTERFACE AS APPLICATOR
1911022

THIS DRAWING IS A CONTROLLED DOCUMENT.		DWN	GOPALAKRISHNA HV														
DIMENSIONS:		CHK	RAGHAVENDRA														
TOLERANCES UNLESS OTHERWISE SPECIFIED:		APVD	RAGHAVENDRA														
<table border="0"> <tr><td>0 PLC</td><td>±</td></tr> <tr><td>1 PLC</td><td>±</td></tr> <tr><td>2 PLC</td><td>±</td></tr> <tr><td>3 PLC</td><td>±</td></tr> <tr><td>4 PLC</td><td>±</td></tr> <tr><td>ANGLES</td><td>±</td></tr> </table>		0 PLC	±	1 PLC	±	2 PLC	±	3 PLC	±	4 PLC	±	ANGLES	±	PRODUCT SPEC	NAME		
0 PLC	±																
1 PLC	±																
2 PLC	±																
3 PLC	±																
4 PLC	±																
ANGLES	±																
MATERIAL		APPLICATION SPEC	SIDE FEED SYSTEM III APPLICATOR														
FINISH		WEIGHT	SIZE	CAGE CODE	DRAWING NO												
			A3		©- 1911022												
		CUSTOMER DRAWING	SCALE	SHEET 1 OF 2	REV A1												



PART NUMBER	REV	DESCRIPTION	PROGRAMMED MEMORY CHIP
1911022-1	A	CUTS CARRIER	8-1911022-1
1911022-6	A	CONTINUOUS CARRIER	8-1911022-6
7-1911022-1	A	-1 AND SPARE PARTS	9-1911022-1
7-1911022-6	A	-6 AND SPARE PARTS	9-1911022-6
7-1911022-7	A	SPARE PARTS KIT	-

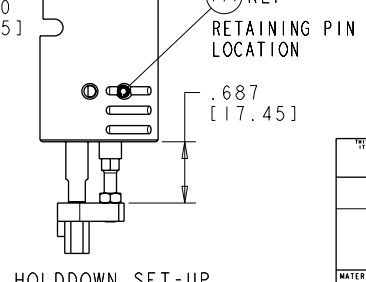
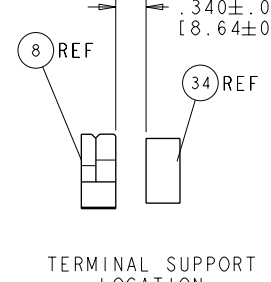
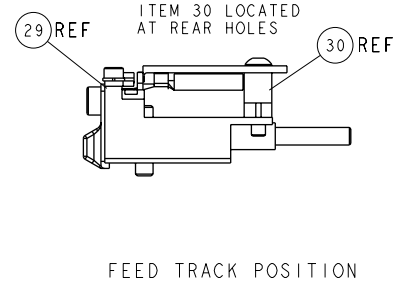
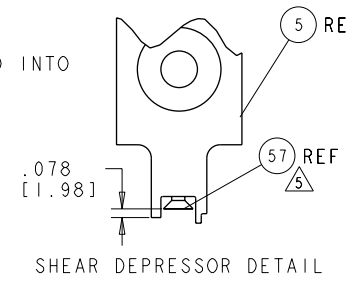
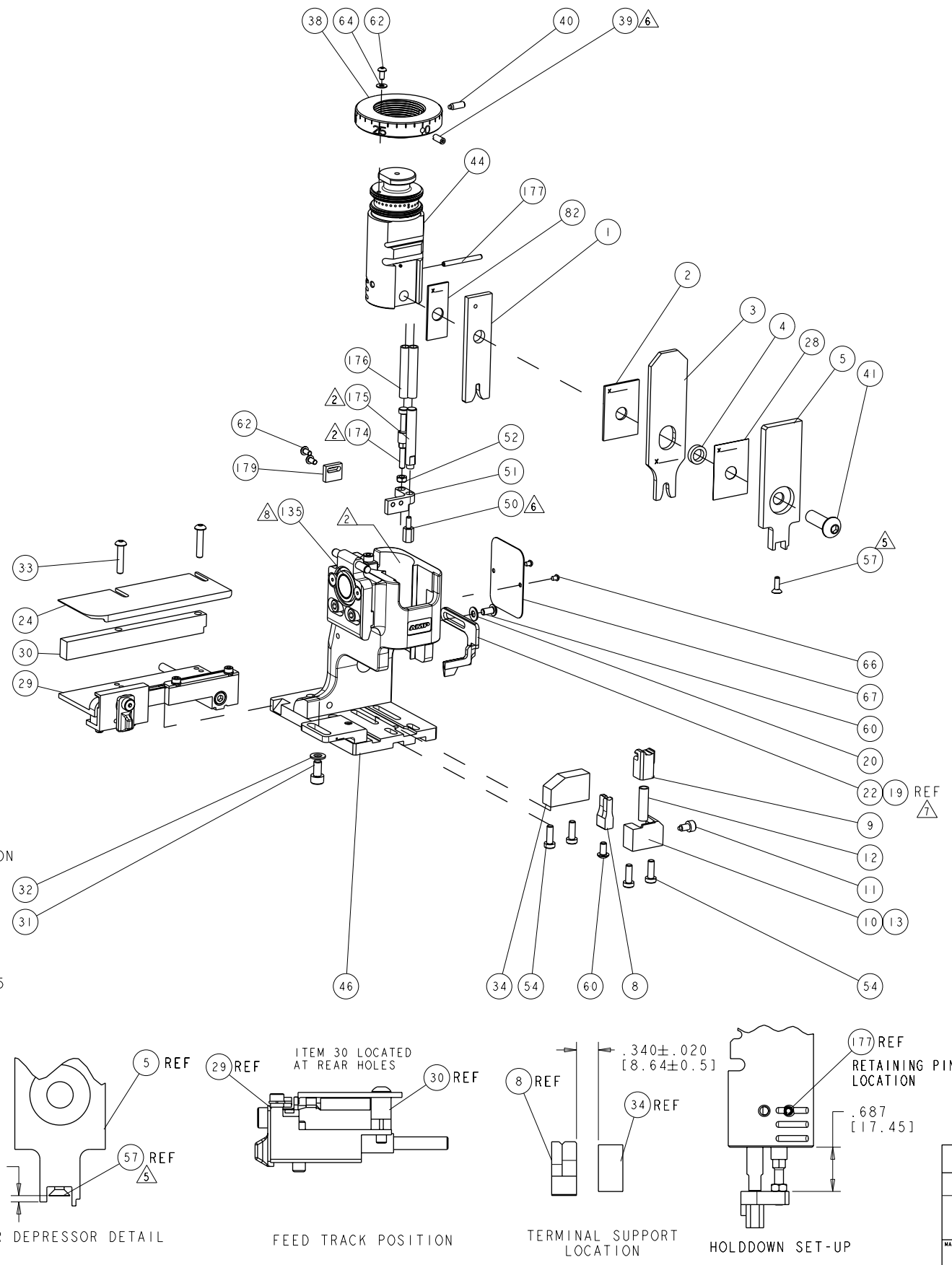
APPLICATOR DATA		
CRIMP	SIZE	TYPE
WIRE	2.54mm [.100]	F
INSUL	4.32mm [.170]	O
APPL INSTRUCTIONS 408-10135		

TERMINAL DATA: TE TERMINAL		TYCO ELECTRONICS CRIMP SPEC	
TERMINAL NAME: 1.5 MM CTC PIN/SKT ASSY FOR SGL WIRE SEAL			
WIRE STRIP LENGTH 4.7-5.3 mm [.185-.208 IN]		INSULATION DIAMETER RANGE 2.20-3.00mm [.086-.118 IN]	
TERMINAL APPL SPEC	114-18020 (A)	-	-
	114-18040 (B)	-	-

TE TERMINAL	TE TERMINAL	TE SEAL	TE SEAL
1703014-1 (B)	1-929990-0 (B)	828905	-
1703014-4 (B)	929975-1 (A)	-	828921
929990-1 (B)	929975-4 (A)	-	-
929990-2 (B)	929975-7 (A)	-	-
929990-3 (B)	929975-8 (A)	-	-
929990-4 (B)	929968-1 (A)	-	-
929990-5 (B)	1-1719188-0 (B)	-	-
929990-6 (B)	-	-	-

WIRE SIZE	CRIMP HEIGHT
2.5mm ²	1.97±.05 [.078±.002]
2mm ²	1.82±.05 [.072±.002]
1.5mm ²	1.67±.05 [.066±.002]

- 1 RECOMMENDED SPARE PARTS.
- 2 GREASE BEARING SURFACES LIGHTLY.
- 3 LUBRICATE DAILY PER THE APPLICATOR INSTRUCTION SHEET SUPPLIED WITH THE APPLICATOR.
- 4 THIS APPLICATOR APPLIES TERMINAL WITH A SEAL. WIRE INSULATION DIA IS DEPENDENT ON SEAL BEING APPLIED. SEE APPL. SPEC. FOR DETAILS.
- 5 APPLY TORQ-SEAL IN ALLEN SOCKET TO FILL HOLE AFTER FLAT HD HAS BEEN ADJUSTED TO CORRECT HEIGHT AT QUALIFICATION. APPLY P/N 1-23419-5 LOCTITE(R) TO THREADS.
- 6 APPLY P/N 1-23419-5 LOCTITE(R) TO THREADS.
- 7 ITEM 19 - OPTIONAL STRIPPER FOR BENCH MACHINE APPLICATION.
- 8 APPLICATOR SPECIFIC DATA TO BE ENTERED INTO BLANK MEMORY CHIP AT ASSEMBLY.



REV	DATE	BY	CHKD	APPD
A	9 JAN 2008	GH	GB	

QTY	REV	DESCRIPTION	ITEM NO				
-	1	1976053-2	LOCATER BLOCK, TERMINAL	179			
-	1	1-9931111-6	PIN, SLOTTED SPRING 3.0 X 30.0	177			
-	2	3-22280-7	SPRING, COMPRESSION	176			
-	1	1752353-1	GUIDE PIN, HOLDDOWN	175			
-	1	1901680-1	GUIDE PIN, HOLDDOWN	174			
-	REF	REF REF REF	SEE TABLE	135			
-	1	1-1976540-0	SPACER, CRIMPER	82			
-	1	1633565-1	DOCUMENTATION PACKAGE	71			
-	1	1901048-1	TAG, IDENTIFICATION	67			
-	2	21017-1	SCREW, DRIVE	66			
-	1	18028-1	WASHER, FLAT, REG M3	64			
-	3	3-1655785-9	SCR, BTN SKT HD CAP (M3 X 6)	62			
-	2	2-1655785-1	SCR, BTN SKT HD CAP (M4 X 8)	60			
-	1	985575-3	SCR, FLT SKT HD CAP M3 X 10.0	57			
-	4	4-1655783-3	SCR, CAP, SOC HD, LOW HEAD, M4 X 12	54			
-	1	1-18030-0	NUT, HEX, REG M3.5	52			
-	1	1901681-8	HOLDDOWN, TERMINAL	51			
-	1	2-1752354-1	STANDOFF, HOLD-DOWN	50			
-	1	1752300-1	SF SYSTEM III APPLICATOR	46			
-	1	1976049-1	RAM, STEPPED	44			
-	1	2-1655785-3	SCR, BTN SKT HD CAP (M8 X 25)	41			
-	1	993002-4	SCREW, SET, SFT TIP	40			
-	1	1962043-1	PLUNGER, BALL, METRIC	39			
-	1	1752309-3	RING, INSULATION CRIMP	38			
-	1	1-1752356-7	SUPPORT, TERMINAL	34			
-	2	2-1655785-3	SCR, BTN SKT HD CAP (M4 X 20)	33			
-	1	18028-3	WASHER, FLAT, REG M5	32			
-	1	5-1655316-3	SCR, SKT HD CAP, M5 X 10.0	31			
-	1	1320908-1	SPACER, STRIP GUIDE	30			
-	1	1901087-1	ASSEMBLY, STRIP GUIDE	29			
-	1	455888-2	SPACER, CRIMPER	28			
-	1	1320928-3	PLATE, STRIP GUIDE	24			
-	1	1976045-1	STRIPPER	22			
-	1	18028-2	WASHER, FLAT, REG M4	20			
-	REF	REF REF REF	SEE TABLE	19			
-	1	1338684-2	SHEAR HOLDER, FRONT	13			
-	1	3-22280-3	SPRING, COMPRESSION	12			
-	1	356885-5	STOP, SHEAR	11			
-	1	1-1320921-0	SHEAR HOLDER, FRONT, CUT	10			
-	1	318707-1	FLOATING SHEAR, FRONT	9			
-	1	2-1633133-2	ANVIL, COMBINATION .100	8			
-	1	1338680-1	DEPRESSOR, SHEAR	5			
-	1	238011-2	BLOCK, CRIMPER SPACER	4			
-	1	904741-3	CRIMPER, INSUL O PREMIUM	3			
-	1	1-455888-2	SPACER, CRIMPER	2			
-	1	1976050-4	CRIMPER, WIRE F	1			
-77	-76	-71	-6	-1	PART NO	DESCRIPTION	ITEM NO

APPROVED	DATE	BY	CHKD	APPD
G. BAILEY	01NOV2007	G. BAILEY	G. BAILEY	G. BAILEY
DIMENSIONS: INCHES(mm)				
TOLERANCES UNLESS OTHERWISE SPECIFIED:				
0 PLC	±.01	1 PLC	±.005	2 PLC
3 PLC	±.002	4 PLC	±.001	ANGLES
FINISH				
MATERIAL				
WEIGHT				
CUSTOMER DRAWING				
DRAWING NO		SCALE		SHEET
1911022		3:5		1 OF 2
RESTRICTED TO				
REV A				