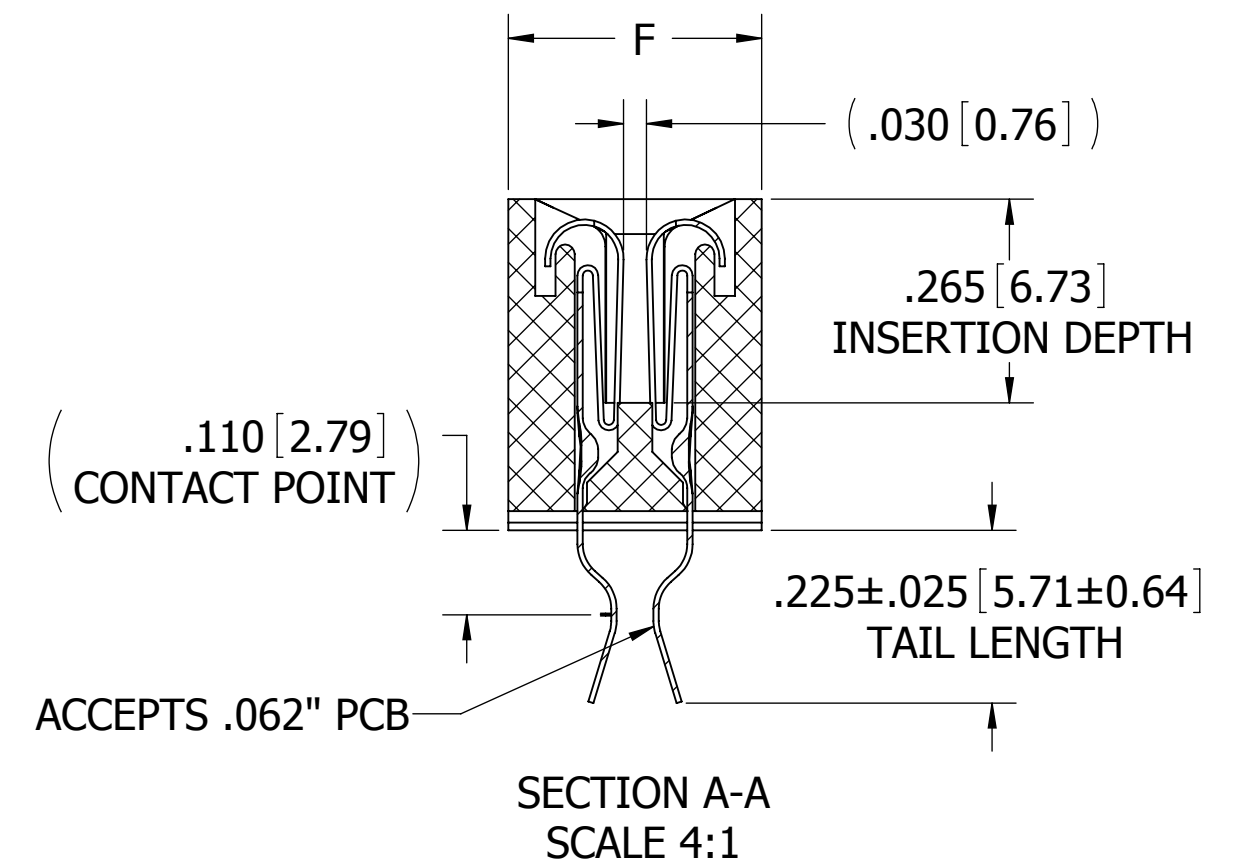
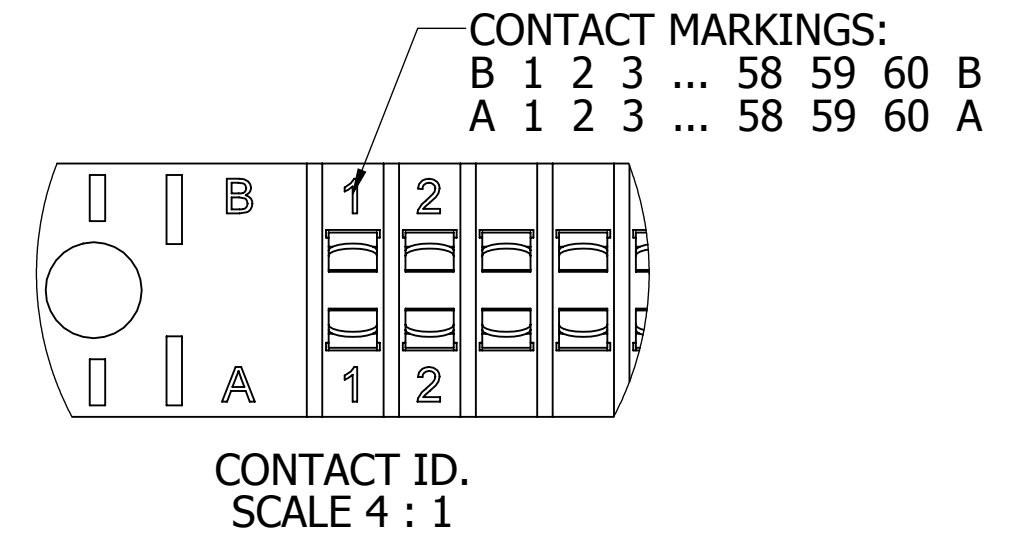
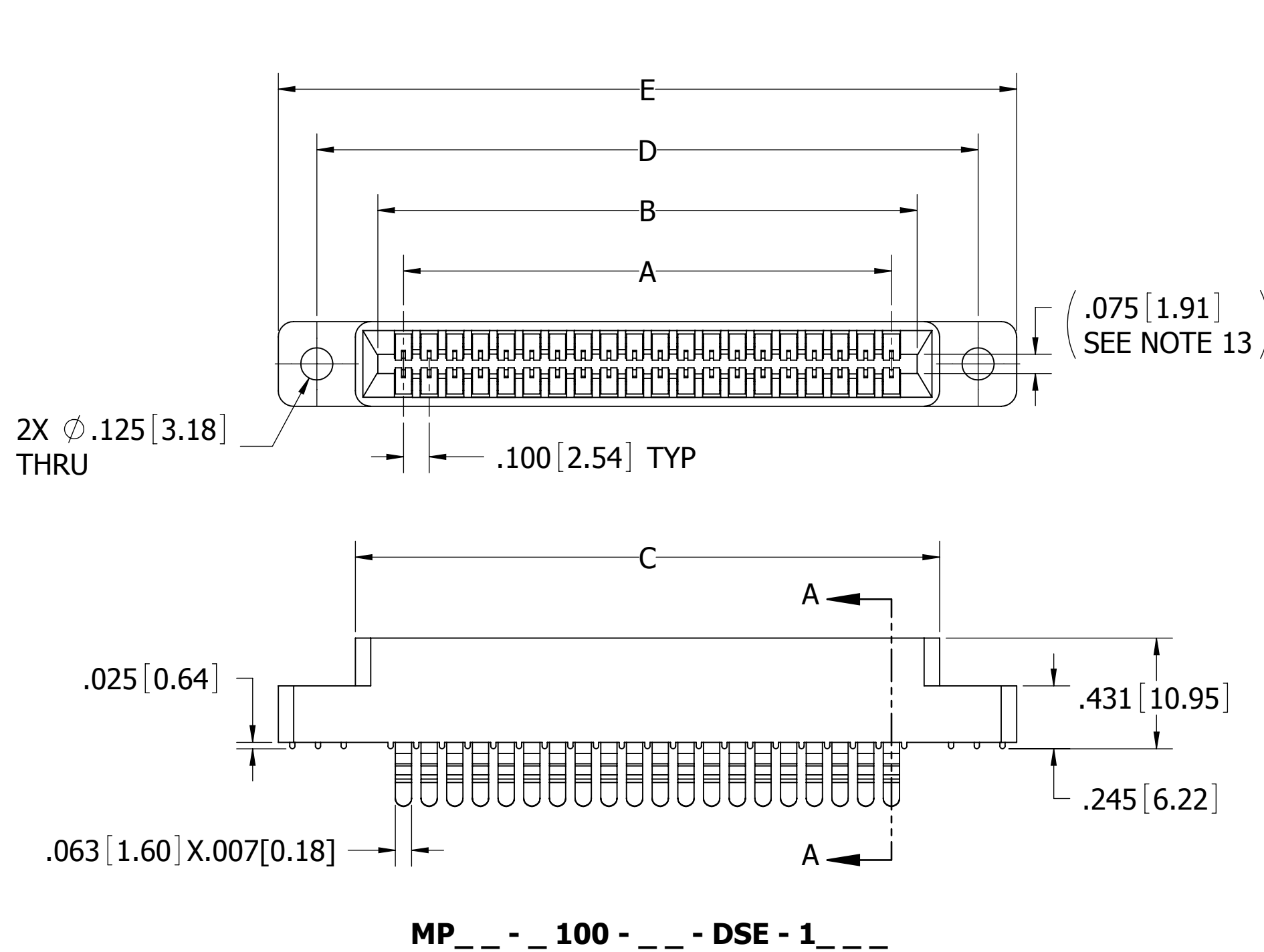


| REVISIONS |         |   |            |     |
|-----------|---------|---|------------|-----|
| REV.      | ECO. NO | DESCRIPTION   | DATE       | BY  |
| A         | 955     | INITIAL RELEASE   | 3/10/2006  | MNH |
| B         | 2080    | ADD INSULATOR MTL & MOUNTING OPTIONS  | 11/19/09   | JH  |
| C         | 2387    | TABULATE P/N CODING TO INCLUDE P39, P71, ADD CONTACT GAP DIM, TAIL TOLERANCE, OBSOLETE DWG# 11610 | 6/24/2011  | JH  |
| D         | 3253    | UPDATE DWG FORMAT, UPDATE PROCESSING TEMPS ON CUSTOMER COPY, ADD MATERIAL OPTION '4'              | 8/6/2015   | MG  |
| E         | 3346    | ADD 'MPP' OPTION, OBSOLETE DWG C11243   | 12/04/2015 | EP  |



**NOTES:**

1. INSULATOR MATERIAL: SEE PART NUMBER CODING
2. CONTACT MATERIAL: SEE PART NUMBER CODING
3. PLATING: SEE PART NUMBER CODING
4. OPERATING TEMPERATURE: SEE PART NUMBER CODING
5. PROCESSING TEMP: SEE PART NUMBER CODING
6. UL FLAMMABILITY RATING: 94V-0
7. OPERATING VOLTAGE: 700 VAC
8. CURRENT RATING: 3 AMPS
9. CONTACT RESISTANCE: 30 MILLI OHMS MAX
10. INSULATION RESISTANCE: 5000 MEGA OHMS
11. DURABILITY: 500 CYCLES MINIMUM
12. CONNECTOR IDENTIFICATION: THE PART SHALL BE MARKED WITH A PART NUMBER AND LOT CODE
13. BOARD THICKNESS ACCOMMODATED: .062 ± .008 [1.57 ± 0.20]
14. INSERTION FORCE: 16 OZ MAX PER CONTACT PAIR WHEN USING A .062 [1.57] TEST BLADE  
INTERNAL INSPECTION TO BE PER SULLIN'S WORK INSTRUCTION WI7.3-01
15. WITHDRAWAL FORCE: 1 OZ MIN PER CONTACT PAIR USING .062 [1.57] PCB
16. MODIFICATION: CARD EXTENDER BEND FOR LOW PROFILE CONNECTOR, .055" INSIDE DIMENSION FOR .062" PCB

REFERENCE: \_\_ C \_\_ DRV \_P13, P39, P71

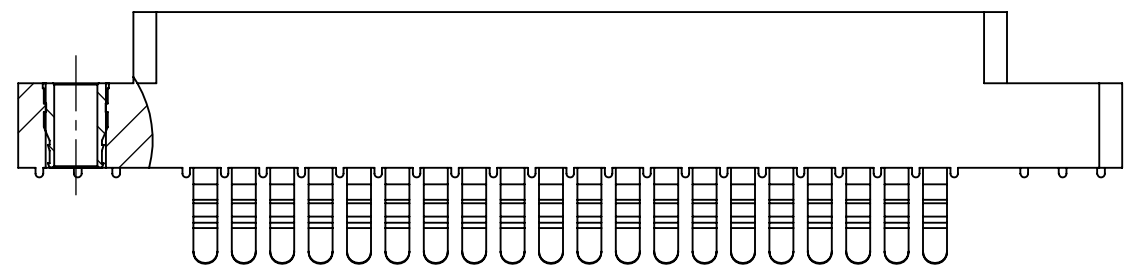
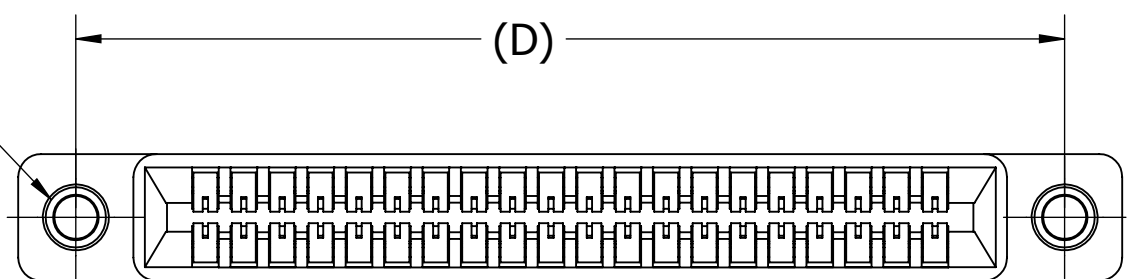
**CUSTOMER COPY**



|  |  |   |           |          |              |
|--|--|---|-----------|----------|--------------|
| UNLESS OTHERWISE SPECIFIED:<br>DIMENSIONS ARE IN INCHES [MM]                     |  | DRAWN   | DATE      | NAME     |              |
|  |  | 6/24/2011   | JH        | JH       |              |
| TOLERANCES:  |  | <small>THE INFORMATION HEREIN CONTAINS PROPRIETARY INFORMATION OF SULLINS ELECTRONICS AND IS NOT TO BE REPRODUCED, USED OR DISCLOSED TO OTHERS FOR ANY PURPOSE EXCEPT AS SPECIFICALLY AUTHORIZED IN WRITING BY AN OFFICER OF SULLINS ELECTRONICS.</small> |           |          |              |
| ANGULAR: ± 1°  |  | TITLE<br>CARD EDGE, .100 CC LP  |           |          |              |
| DECIMALS<br>.XX = ± .02 [ .5]<br>.XXX = ± .005 [ .13]<br>.XXXX = ± .0005 [ .013] |  | PART NUMBER<br>MP__ - _100- _ -DSE- _ - _ -   |           |          |              |
|  |  | SIZE  | CAGE CODE | DWG. NO. | REV          |
|  |  | C   | 54453     | C10692   | E            |
|  |  | SCALE: 2:1  |           |          | SHEET 1 OF 3 |

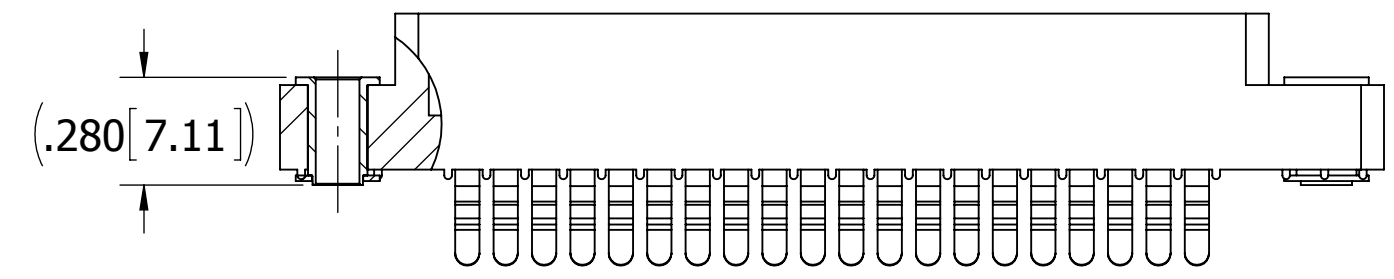
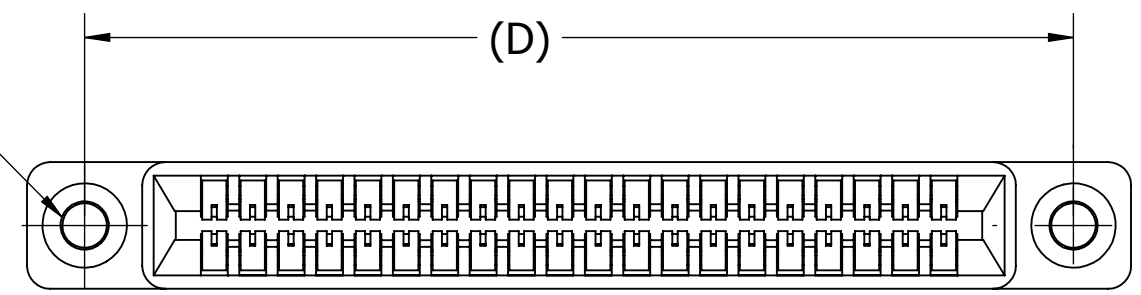
8 7 6 5 4 3 2 1

2X #4-40  
THREADED  
INSERT



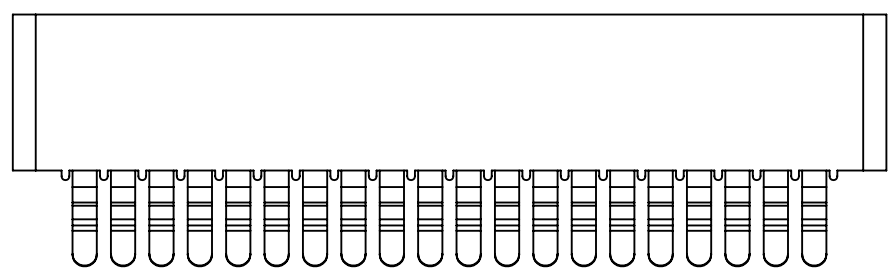
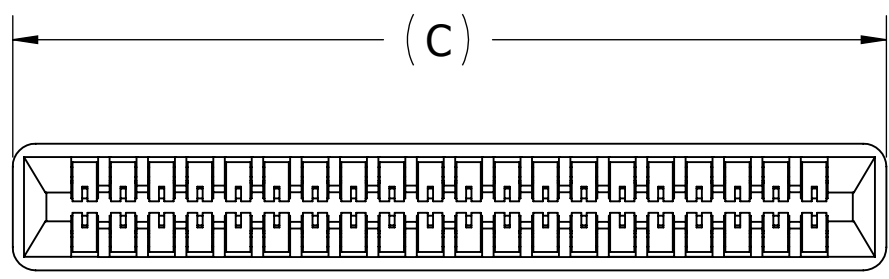
**MP\_ \_ 100 - \_ - DSE - 2\_ \_**

2X FLOATING BOBBIN  
Ø .116[2.95] CLEARANCE  
FOR #4 SCREW



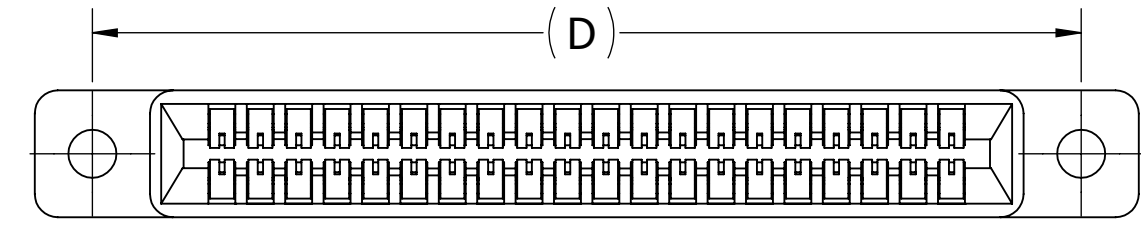
**MP\_ \_ 100 - \_ - DSE - 3\_ \_**

(C)



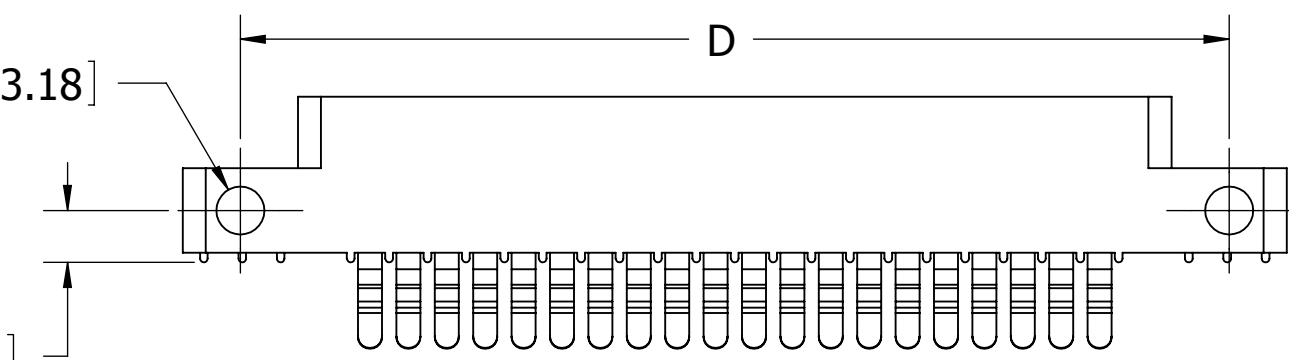
**MP\_ \_ 100 - \_ - DSE - 4\_ \_**

(D)



2X Ø .125 [3.18]  
THRU

2X .135 [3.43]



**MP\_ \_ 100 - \_ - DSE - 8\_ \_**

# CUSTOMER COPY



UNLESS OTHERWISE SPECIFIED:  
DIMENSIONS ARE IN INCHES [MM]

TOLERANCES:  
ANGULAR: ± 1°  
DECIMALS  
.XX = ± .02 [.5]  
.XXX = ± .005 [.13]  
.XXXX = ± .0005 [.013]

|   |           |      |
|---|-----------|------|
| DRAWN   | DATE      | NAME |
|   | 6/24/2011 | JH   |
| <small>THE INFORMATION HEREIN CONTAINS PROPRIETARY INFORMATION OF SULLINS ELECTRONICS AND IS NOT TO BE REPRODUCED, USED OR DISCLOSED TO OTHERS FOR ANY PURPOSE EXCEPT AS SPECIFICALLY AUTHORIZED IN WRITING BY AN OFFICER OF SULLINS ELECTRONICS.</small> |           |      |
|   |           |      |

|   |                    |                    |
|---|--------------------|--------------------|
|   |                    |                    |
| TITLE<br>CARD EDGE, .100 CC LP            |                    |                    |
| PART NUMBER<br>MP_ _ 100- _ -DSE- _ _ _ _ |                    |                    |
| SIZE<br>C                                 | CAGE CODE<br>54453 | DWG. NO.<br>C10692 |
| SCALE: 2:1                                |                    | REV<br>E           |
| SHEET 2 OF 3                              |                    |                    |

**PART NUMBER CODING**

MP - 100 - DSE -

**CONTACT MATERIAL**  
 OMIT= PHOSPHOR BRONZE (SEE TABLE 2)  
 Y= BERYLLIUM COPPER (SEE TABLE 3)  
 OMIT WITH 'MPP' PLATING CODE = SPINODAL (SEE TABLE 4)

**PLATING MODIFICATION CODE** (SEE TABLE 1)

**MOUNTING STYLE**  
 1= .125" DIA. CLEARANCE HOLES  
 2= #4-40 THREADED INSERT  
 3= FLOATING BOBBIN  
 4= NO MOUNTING EARS  
 8= .125" DIA. SIDE HOLES

**NUMBER OF POSITIONS**

**INSULATOR MATERIAL**

- 0= PBT, BLUE
- 2= PBT, GREEN
- 3= PBT, BLACK
- 1= PPS, BROWN
- 5= PPS, BLACK
- 6= PPS, GREEN
- 7= PPS, BROWN
- 4= PA9T, BLACK

**PLATING** (SEE TABLE 1)

| PART NUMBER<br>MICRO PLASTICS | NO. OF<br>POS. | A±.008[0.20] |        | B±.008[0.20] |        | C±.015[0.38] |        | D±.010[0.25] |        | E±.020[0.51] |        | F+.005[0.13]/-.015[0.38] |       |
|-------------------------------|----------------|--------------|--------|--------------|--------|--------------|--------|--------------|--------|--------------|--------|--------------------------|-------|
|                               |                | IN           | MM     | IN           | MM     | IN           | MM     | IN           | MM     | IN           | MM     | IN                       | MM    |
| MP - 100-04-DSE-              | 4              | 0.300        | 7.62   | 0.500        | 12.70  | 0.675        | 17.15  | 0.975        | 24.77  | 1.275        | 32.39  |                          |       |
| MP - 100-05-DSE-              | 5              | 0.400        | 10.16  | 0.600        | 15.24  | 0.775        | 19.69  | 1.075        | 27.31  | 1.375        | 34.93  |                          |       |
| MP - 100-06-DSE-              | 6              | 0.500        | 12.70  | 0.700        | 17.78  | 0.875        | 22.23  | 1.175        | 29.85  | 1.475        | 37.47  |                          |       |
| MP - 100-07-DSE-              | 7              | 0.600        | 15.24  | 0.800        | 20.32  | 0.975        | 24.77  | 1.275        | 32.39  | 1.575        | 40.01  |                          |       |
| MP - 100-08-DSE-              | 8              | 0.700        | 17.78  | 0.900        | 22.86  | 1.075        | 27.31  | 1.375        | 34.93  | 1.675        | 42.55  |                          |       |
| MP - 100-10-DSE-              | 10             | 0.900        | 22.86  | 1.100        | 27.94  | 1.275        | 32.39  | 1.575        | 40.01  | 1.875        | 47.63  |                          |       |
| MP - 100-12-DSE-              | 12             | 1.100        | 27.94  | 1.300        | 33.02  | 1.475        | 37.47  | 1.775        | 45.09  | 2.075        | 52.71  |                          |       |
| MP - 100-13-DSE-              | 13             | 1.200        | 30.48  | 1.400        | 35.56  | 1.575        | 40.01  | 1.875        | 47.63  | 2.175        | 55.25  |                          |       |
| MP - 100-15-DSE-              | 15             | 1.400        | 35.56  | 1.600        | 40.64  | 1.775        | 45.09  | 2.075        | 52.71  | 2.375        | 60.33  |                          |       |
| MP - 100-17-DSE-              | 17             | 1.600        | 40.64  | 1.800        | 45.72  | 1.975        | 50.17  | 2.275        | 57.79  | 2.575        | 65.41  | 0.330                    | 8.38  |
| MP - 100-18-DSE-              | 18             | 1.700        | 43.18  | 1.900        | 48.26  | 2.075        | 52.71  | 2.375        | 60.33  | 2.675        | 67.95  |                          |       |
| MP - 100-19-DSE-              | 19             | 1.800        | 45.72  | 2.000        | 50.80  | 2.175        | 55.25  | 2.475        | 62.87  | 2.775        | 70.49  |                          |       |
| MP - 100-20-DSE-              | 20             | 1.900        | 48.26  | 2.100        | 53.34  | 2.275        | 57.79  | 2.575        | 65.41  | 2.875        | 73.03  |                          |       |
| MP - 100-22-DSE-              | 22             | 2.100        | 53.34  | 2.300        | 58.42  | 2.475        | 62.87  | 2.775        | 70.49  | 3.075        | 78.11  |                          |       |
| MP - 100-23-DSE-              | 23             | 2.200        | 55.88  | 2.400        | 60.96  | 2.575        | 65.41  | 2.875        | 73.03  | 3.175        | 80.65  |                          |       |
| MP - 100-25-DSE-              | 25             | 2.400        | 60.96  | 2.600        | 66.04  | 2.775        | 70.49  | 3.075        | 78.11  | 3.375        | 85.73  |                          |       |
| MP - 100-26-DSE-              | 26             | 2.500        | 63.50  | 2.700        | 68.58  | 2.875        | 73.03  | 3.175        | 80.65  | 3.475        | 88.27  |                          |       |
| MP - 100-28-DSE-              | 28             | 2.700        | 68.58  | 2.900        | 73.66  | 3.075        | 78.11  | 3.375        | 85.73  | 3.675        | 93.35  |                          |       |
| MP - 100-30-DSE-              | 30             | 2.900        | 73.66  | 3.100        | 78.74  | 3.275        | 83.19  | 3.575        | 90.81  | 3.875        | 98.43  |                          |       |
| MP - 100-31-DSE-              | 31             | 3.000        | 76.20  | 3.200        | 81.28  | 3.375        | 85.73  | 3.675        | 93.35  | 3.975        | 100.97 |                          |       |
| MP - 100-35-DSE-              | 35             | 3.400        | 86.36  | 3.600        | 91.44  | 3.775        | 95.89  | 4.075        | 103.51 | 4.375        | 111.13 |                          |       |
| MP - 100-36-DSE-              | 36             | 3.500        | 88.90  | 3.700        | 93.98  | 3.875        | 98.43  | 4.175        | 106.05 | 4.475        | 113.67 |                          |       |
| MP - 100-40-DSE-              | 40             | 3.900        | 99.06  | 4.100        | 104.14 | 4.275        | 108.59 | 4.575        | 116.21 | 4.875        | 123.83 |                          |       |
| MP - 100-43-DSE-              | 43             | 4.200        | 106.68 | 4.400        | 111.76 | 4.575        | 116.21 | 4.875        | 123.83 | 5.175        | 131.45 |                          |       |
| MP - 100-44-DSE-              | 44             | 4.300        | 109.22 | 4.500        | 114.30 | 4.675        | 118.75 | 4.975        | 126.37 | 5.275        | 133.99 | 0.400                    | 10.16 |
| MP - 100-49-DSE-              | 49             | 4.800        | 121.92 | 5.000        | 127.00 | 5.175        | 131.45 | 5.475        | 139.07 | 5.775        | 146.69 |                          |       |
| MP - 100-50-DSE-              | 50             | 4.900        | 124.46 | 5.100        | 129.54 | 5.275        | 133.99 | 5.575        | 141.61 | 5.875        | 149.23 |                          |       |
| MP - 100-52-DSE-              | 52             | 5.100        | 129.54 | 5.300        | 134.62 | 5.475        | 139.07 | 5.775        | 146.69 | 6.075        | 154.31 |                          |       |
| MP - 100-60-DSE-              | 60             | 5.900        | 149.86 | 6.100        | 154.94 | 6.275        | 159.39 | 6.575        | 167.01 | 6.875        | 174.63 |                          |       |
| MP - 100-65-DSE-              | 65             | 6.400        | 162.56 | 6.600        | 167.64 | 6.775        | 172.09 | 7.075        | 179.71 | 7.375        | 187.33 |                          |       |

**TABLE 1 (PLATING):**

ALL PLATINGS HAVE .000050" MIN NICKEL UNDERPLATE

|         | CONTACT SURFACE                  | TERMINATION              | PLATING MODIFICATION CODE |
|---------|----------------------------------|--------------------------|---------------------------|
| MP, MPP | .000010" GOLD OVERALL            |                          | OMIT                      |
|         | .000030" GOLD                    | .000010" GOLD OVERALL    | G                         |
| MPSL    | .000010" GOLD                    | .000100" PURE TIN, MATTE | K                         |
|         | .000030" GOLD                    | .000100" PURE TIN, MATTE | GK                        |
| MPL     | .000100" PURE TIN, MATTE OVERALL |                          | K                         |

(MPL PLATING AVAILABLE WITH PHOSPHOR BRONZE CONTACTS ONLY)  
 (MP, MPSL AVAILABLE IN PHOSPHOR BRONZE OR BERYLLIUM COPPER)  
 (MPP = SPINODAL CONTACTS)

**TABLE 2 (PHOSPHOR BRONZE CONTACTS): MP, MPL, MPSL**

| INSULATOR MATERIAL CODE | OPERATING TEMPERATURE | PROCESSING TEMPERATURE     |
|-------------------------|-----------------------|----------------------------|
| 0, 2, 3                 | -65°C TO +125°C       | WAVE/MANUAL SOLDERING ONLY |
| 1, 5, 6, 7              | -65°C TO +125°C       | 260°C MAX FOR 20 SEC       |
| 4                       | -65°C TO +125°C       | 260°C MAX FOR 20 SEC       |

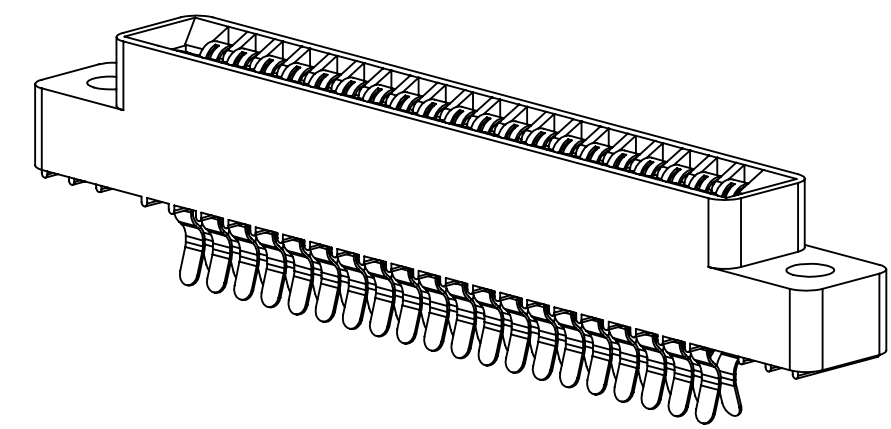
**TABLE 3 (BERYLLIUM COPPER CONTACTS): MP OR MPSL WITH 'Y' MODIFICATION CODE**

| INSULATOR MATERIAL CODE | OPERATING TEMPERATURE | PROCESSING TEMPERATURE     |
|-------------------------|-----------------------|----------------------------|
| 0, 2, 3                 | -65°C TO +125°C       | WAVE/MANUAL SOLDERING ONLY |
| 1, 5, 6, 7              | -65°C TO +150°C       | 260°C MAX FOR 20 SEC       |
| 4                       | -65°C TO +150°C       | 260°C MAX FOR 20 SEC       |

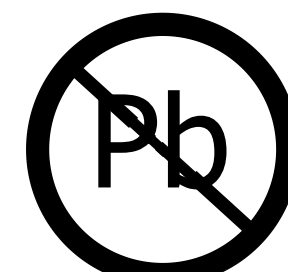
**TABLE 4 (SPINODAL CONTACTS): MPP**

| INSULATOR MATERIAL CODE | OPERATING TEMPERATURE | PROCESSING TEMPERATURE |
|-------------------------|-----------------------|------------------------|
| 1, 5, 6, 7              | -65°C TO +200°C       | 260°C MAX FOR 20 SEC   |

(CONSULT FACTORY FOR SPECIAL SOLDERING REQUIREMENTS)



**CUSTOMER COPY**



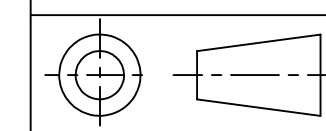
RoHS COMPLIANT

UNLESS OTHERWISE SPECIFIED:  
 DIMENSIONS ARE IN INCHES (MM)

TOLERANCES:  
 ANGULAR: ± 1°  
 DECIMALS  
 .XX=± .02 [.5]  
 .XXX=± .005 [.13]  
 .XXXX=± .0005 [.013]

DRAWN DATE NAME  
 6/24/2011 JH

THE INFORMATION HEREIN CONTAINS PROPRIETARY INFORMATION OF SULLINS ELECTRONICS AND IS NOT TO BE REPRODUCED, USED OR DISCLOSED TO OTHERS FOR ANY PURPOSE EXCEPT AS SPECIFICALLY AUTHORIZED IN WRITING BY AN OFFICER OF SULLINS ELECTRONICS.



|            |                    |                                 |          |
|------------|--------------------|---------------------------------|----------|
|            |                    | TITLE<br>CARD EDGE, .100 CC LP  |          |
|            |                    | PART NUMBER<br>MP - 100 - DSE - |          |
| SIZE<br>C  | CAGE CODE<br>54453 | DWG. NO.<br>C10692              | REV<br>E |
| SCALE: 2:1 |                    | SHEET 3 OF 3                    |          |